

A white shelf at the top of the image holds two white ceramic vases of different shapes and a trailing vine with green leaves.

MARTHA

BY *Martha Stewart*

chilewich®



AN AMERICAN-MADE COLLABORATION

Martha Stewart and Chilewich have come together to create new classics for the table, floor, and more. From placemats and rugs inspired by heirloom linens to spirited yet sophisticated foundations for holiday gatherings, each piece combines a reverence for tradition with modern materiality.



Everything in the collection is made in the USA and suitable for indoor and outdoor use.



“

I have used Chilewich products at home for more than twenty years. The exceptional design marries the artistry of weaving with superior functionality and indoor-outdoor versatility. This beautiful new collaborative collection explores treasured patterns and rich textures in my favorite colors.

”

Martha Stewart

Designed to inspire. Made to last.

To develop this first-of-its-kind collection, the Chilewich design team looked to palettes and patterns found in Martha’s own homes as well as places captured in the pages of *Martha Stewart Living* magazine. These inspirations were the starting point for distinctive new weaves, multi-tonal colors, and timeless motifs that can be mixed and matched with ease.

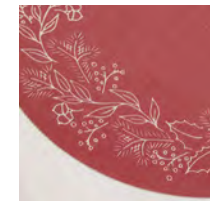




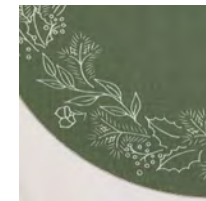


WREATH, Elm

Spirited sophistication. Wreath is a modern holiday classic, combining the precision of digital printing with a sleek, ultra-durable woven textile that wipes clean. The botanical border, complete with pine boughs and sprigs of holly, originated as hand-drawn artwork in the Chilewich design studio and encircles whatever is placed at the center.



CRIMSON



ELM



FROST





SCATTERED LEAVES, Green

Natural wonders. Inspired by Martha Stewart's personal collection of 19th-century botanical prints, Scattered Leaves is a verdant and vibrant addition to any table. The composition brings together begonia and caladium leaves, rendered in vivid detail by digital printing on a sleek, ultra-durable woven textile that wipes clean.



GREEN



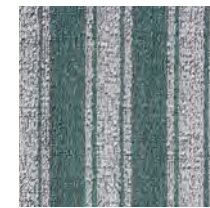


BOARDWALK STRIPE SHAG, Seaside

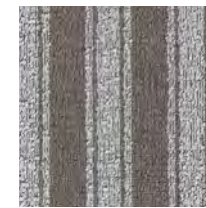
Graphic ease. Boardwalk Stripe refines a bold pattern synonymous with sun-kissed seaside cabanas, umbrellas, and towels. Haloed bands of serene color are paired with off-white in a timeless texture for year-round use, indoors and out.



FERN



SEASIDE



WALNUT



The anywhere mat.
Shag floor mats are made by tufting resilient TerraStrand yarns onto a primary backing and then bonding the looped top layer to a sturdy, non-skid base of all-weather vinyl.

BOARDWALK STRIPE, Walnut

Table Mats



DAMASK, Flax



SHAPE		SIZE		STYLE - COLOR
	Rectangle	14" × 19"	36 × 48 cm	100919 - ---
	Runner	14" × 72"	36 × 183 cm	100924 - ---



ROSETTE, Burnt Coral



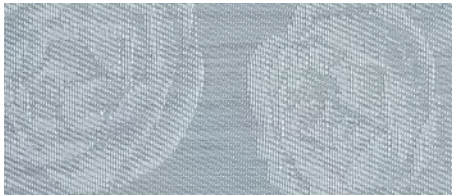
ABALONE 001



BURNT CORAL 002





FLAX 003



SEA 004



WHEAT 005


SHAPE		SIZE		STYLE - COLOR	
	Rectangle	14" × 19"	36 × 48 cm	100921 -	---
	Runner	14" × 72"	36 × 183 cm	100926 -	---



SCATTERED LEAVES, Green



GREEN 001

SHAPE		SIZE		STYLE - COLOR	
	Rectangle	13.5" × 18.5"	34.3 × 47 cm	101039 -	---



WREATH, Elm



CRIMSON 002



ELM 003



FROST 001

SHAPE		SIZE		STYLE - COLOR
○	Round	Diam. 15"	38 cm	101040 - ---



WREATH, Crimson

Shag Mats

NEW

Boardwalk Stripe™ Shag

Limited
Custom Sizes Available



BOARDWALK STRIPE, Walnut



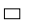
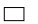
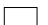
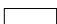
FERN 001


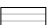




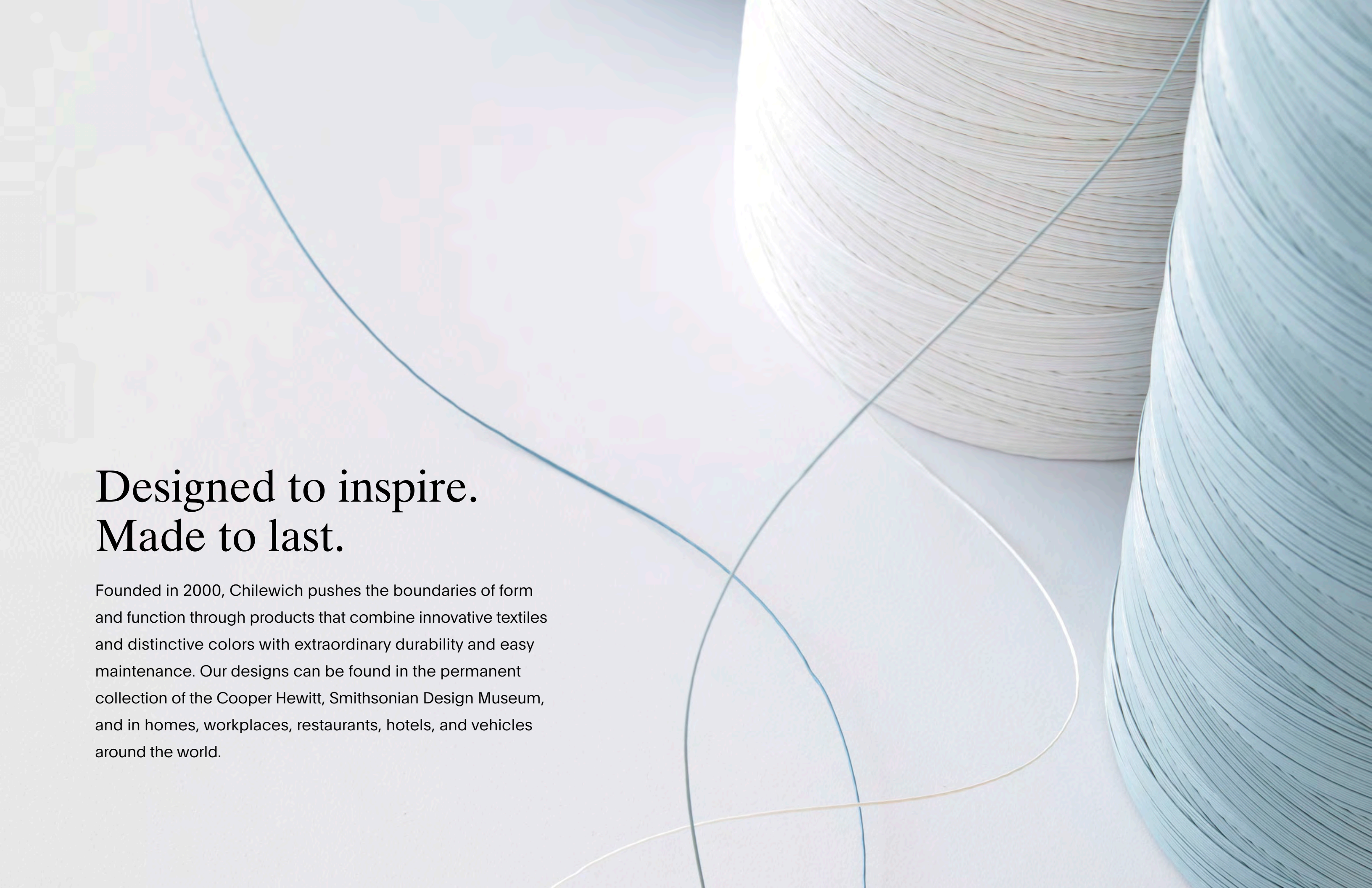
SEASIDE 002



WALNUT 003

SHAPE		SIZE		STYLE	-	COLOR
	Doormat	18" × 28"	46 × 71 cm	201274	-	---
	Utility Mat	24" × 36"	61 × 91 cm	201275	-	---
	Big Mat	36" × 60"	91 × 152 cm	201277	-	---
	Runner	24" × 72"	61 × 183 cm	201276	-	---

STRIPE DIRECTION: BOARDWALK STRIPE			
Stripes run parallel to the long side on Doormats and Big Mats.			
	Doormat	18" × 28"	46 × 71 cm
	Big Mat	36" × 60"	91 × 152 cm
Stripes run parallel to the short side on Utility Mats and Runners.			
	Utility Mat	24" × 36"	61 × 91 cm
	Runner	24" × 72"	61 × 183 cm

The background features a light blue and white color palette. On the right side, there are large, curved, textured forms that resemble thick, layered paper or fabric, creating a sense of depth and movement. Overlaid on this are several thin, flowing lines in shades of blue and white, which sweep across the frame in organic, non-linear patterns. The overall aesthetic is clean, modern, and artistic.

Designed to inspire. Made to last.

Founded in 2000, Chilewich pushes the boundaries of form and function through products that combine innovative textiles and distinctive colors with extraordinary durability and easy maintenance. Our designs can be found in the permanent collection of the Cooper Hewitt, Smithsonian Design Museum, and in homes, workplaces, restaurants, hotels, and vehicles around the world.

MARTHA

BY *Martha Stewart*

chilewich®

Stay in the loop.

Learn about our latest weaves, design debuts, special events, and more at **chilewich.com**, and keep in touch with our textures by following us on Instagram at **@chilewich**.

Chilewich
39 West 19th Street
New York, NY 10011

T +1 212 679 9204
F +1 212 679 9205

Chilewich® and TerraStrand®
are registered trademarks.
© 2025 Chilewich | Sultan LLC.
All rights reserved.

chilewich.com

Photography:
Megan Senior

