



Lookbook Fall/Winter 2025

chilewich®



From statement-making new weaves to irresistible colors, the Fall/Winter collection is an invitation to ground spaces and gatherings with designs that will stand the test of time. Seasonal introductions, including holiday-ready foundations, are joined by the debut of our collaboration with the Metropolitan Museum of Art: a trio of special editions inspired by works in the Museum's extraordinary collection.

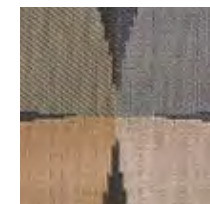
All products are made in the USA and suitable for indoor and outdoor use.





CANOPY, Honey

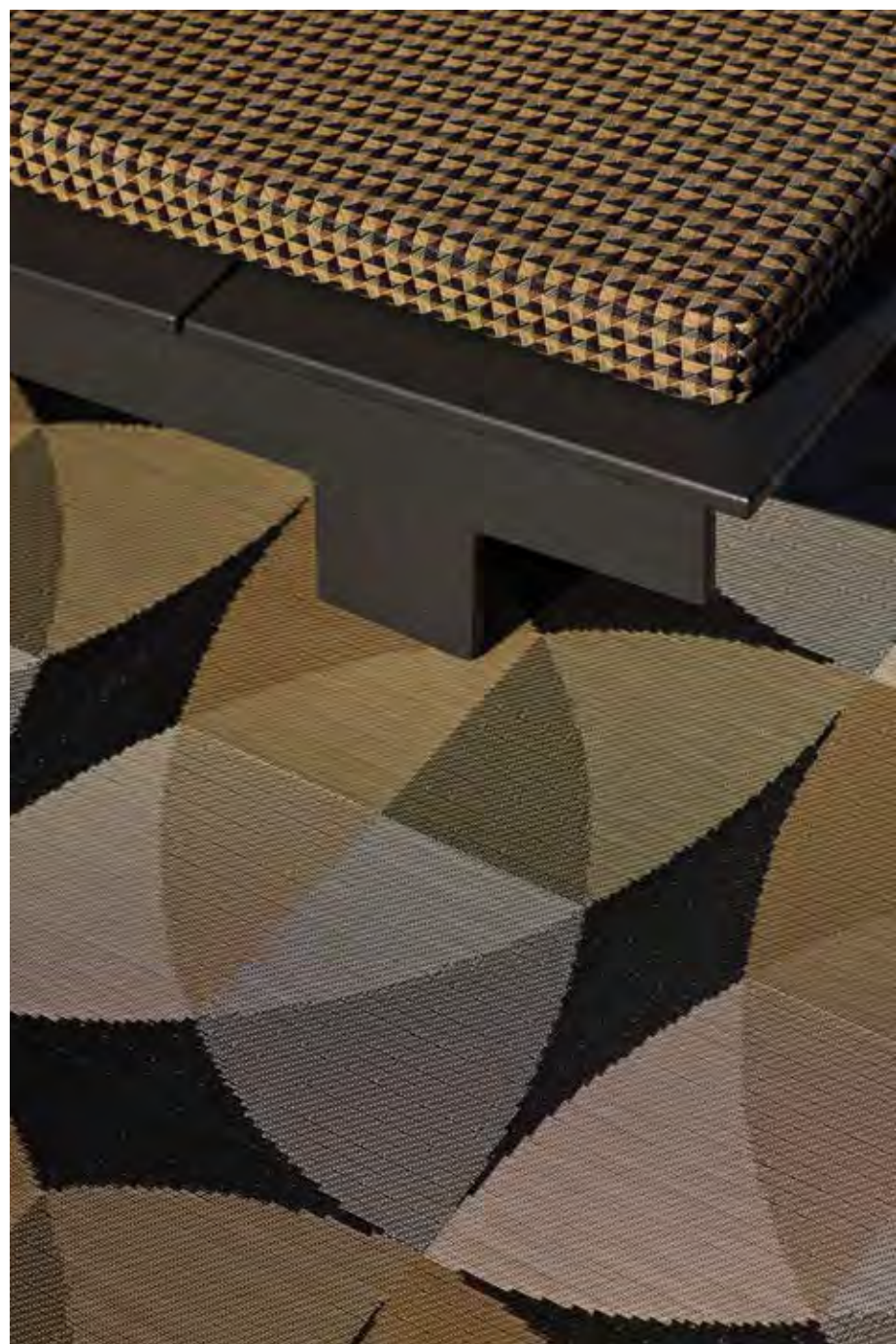
Out of the ordinary. Exploring the interplay of pattern and color, Canopy is a bold in scale and versatile in use. Our design team developed this double weave with an eye to how its precisely engineered repeat of petal-like forms in multi-tonal hues would play out when multiplied vertically and horizontally across the surface of rugs. The result is geometric in character, as lines and curves align to create a lively yet refined foundation for contemporary life.



HONEY



RASPBERRY



CANOPY, Honey



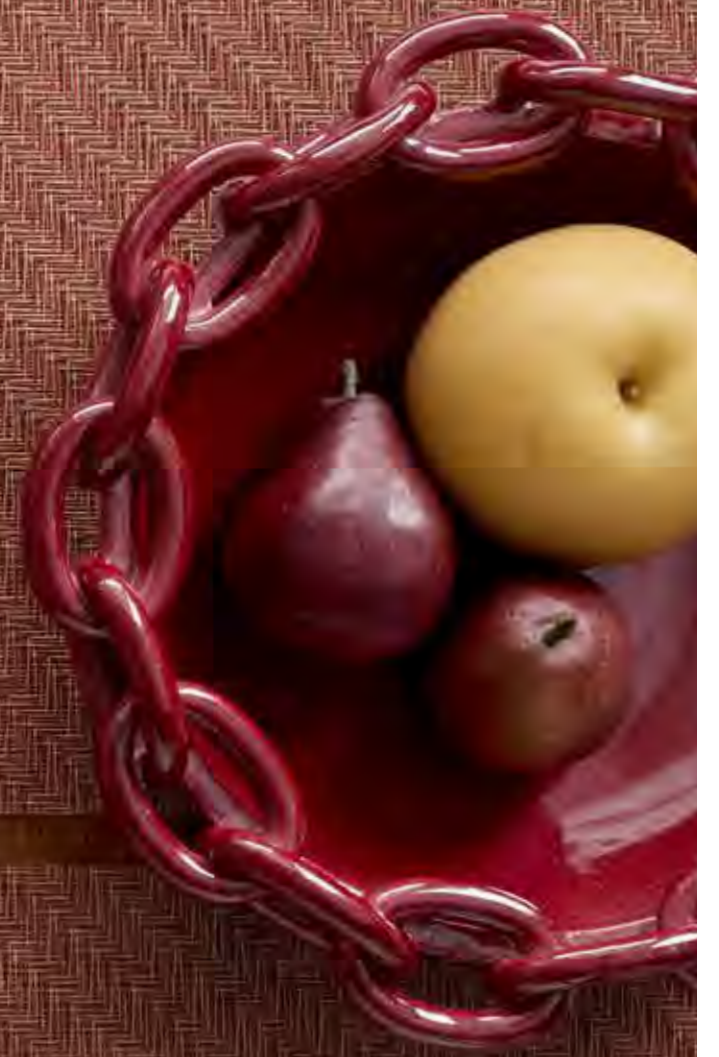
Made to last.

Our placemats and runners are ultrasonically sealed along the edges to prevent fraying.





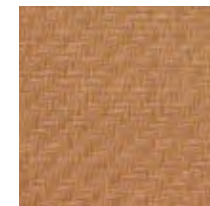
Foxtail



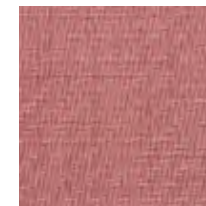


FOXTAIL, Raspberry

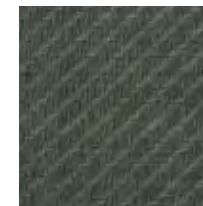
A woven ode to color and texture. Foxtail is rooted in the quiet dynamism of diagonal lines. A closer look reveals yarns that incorporate multiple tones within each strand, creating a surface that is both harmonious and intriguing.



HONEY



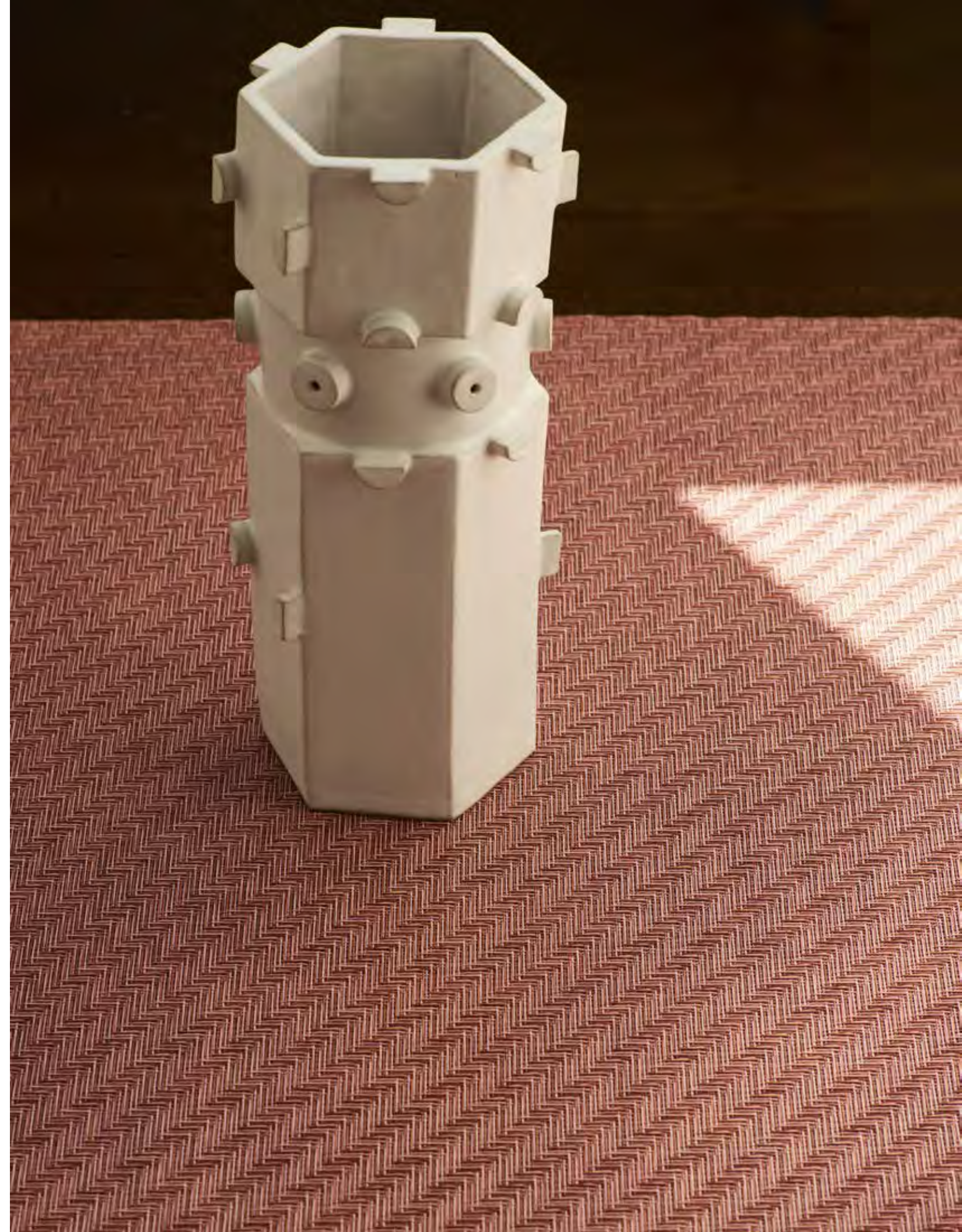
RASPBERRY

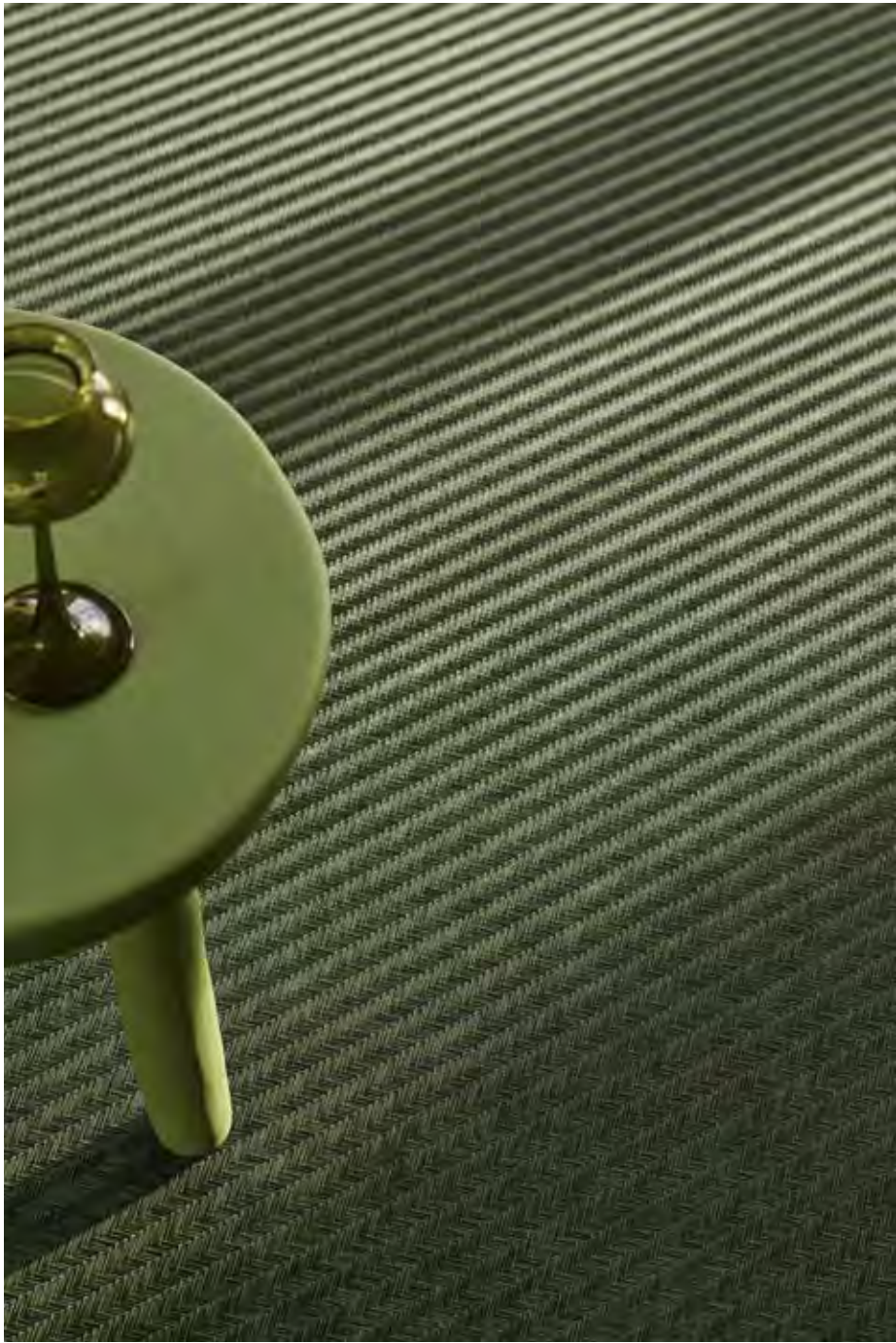


THYME



FOXTAIL, Raspberry





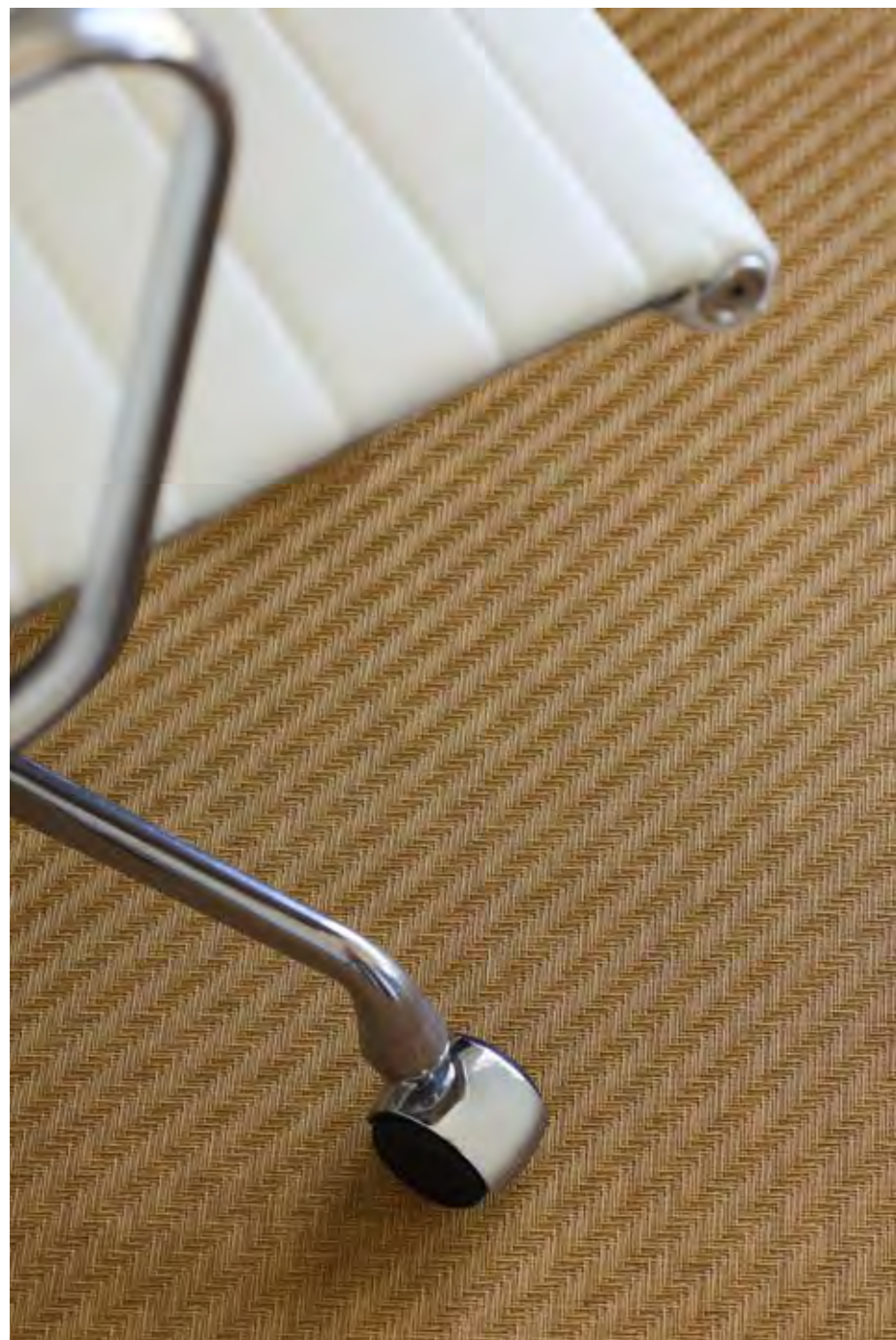
FOXTAIL, Thyme

Crafted with character.
Each rug is finished by hand, with self-bound edges for a refined look.





FOXTAIL, Honey



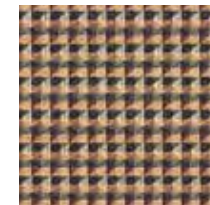
FOXTAIL, Honey



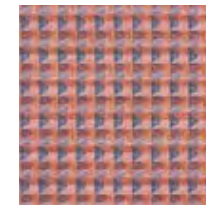




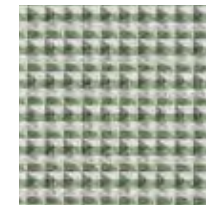
A fresh perspective on stripes. Crane reveals the power of weaving to bring new dimension to graphic forms. Vertical and horizontal lines interact with the weave structure to create remarkable depth, with the angularity creating the impression of added texture.



HONEY



RASPBERRY



THYME



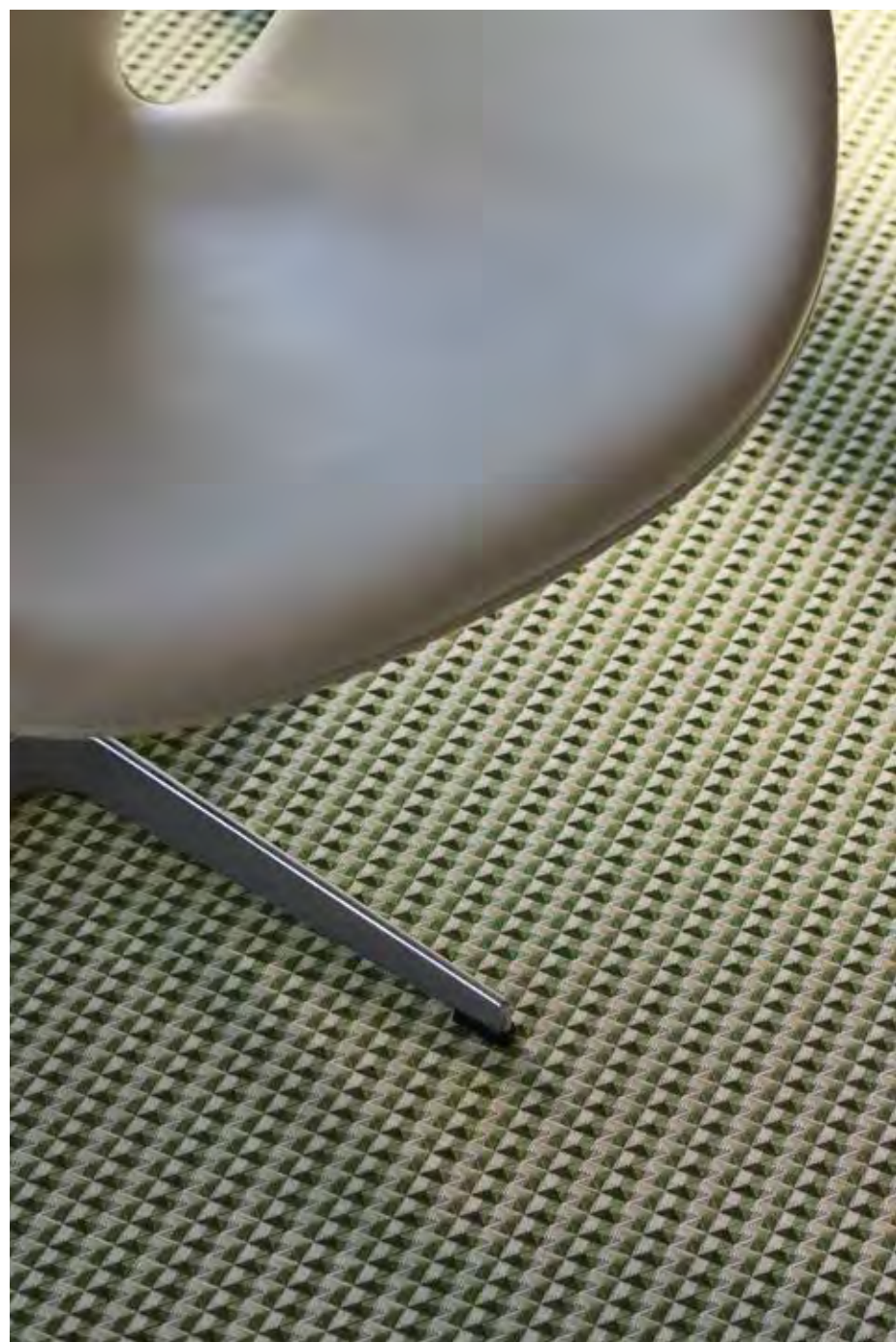
CRANE, Honey



Staying power. Our rugs combine a resilient woven surface with a flexible, non-skid latex backing. Made with recycled materials, it adds stability and acts as a built-in rug pad.

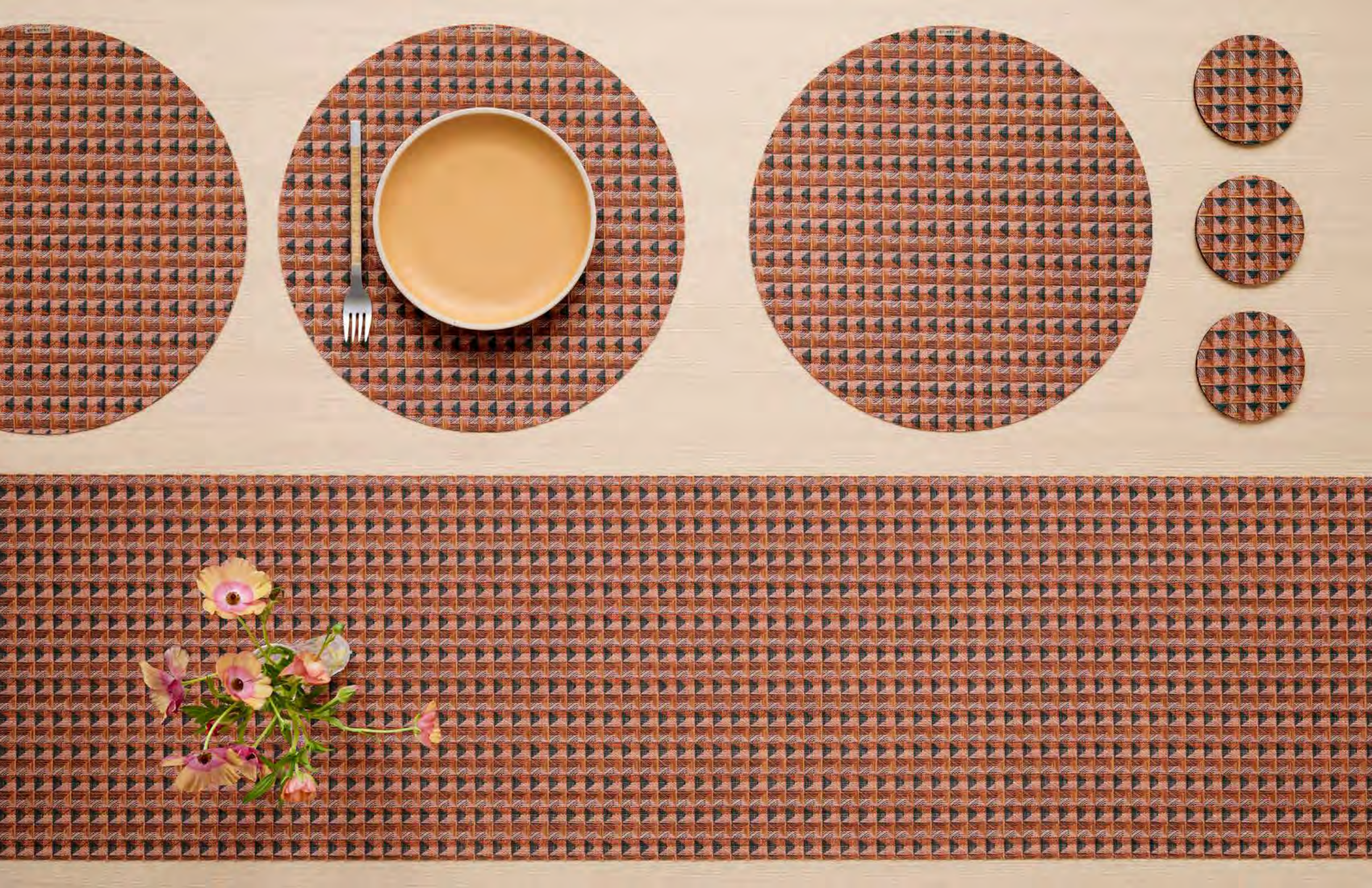


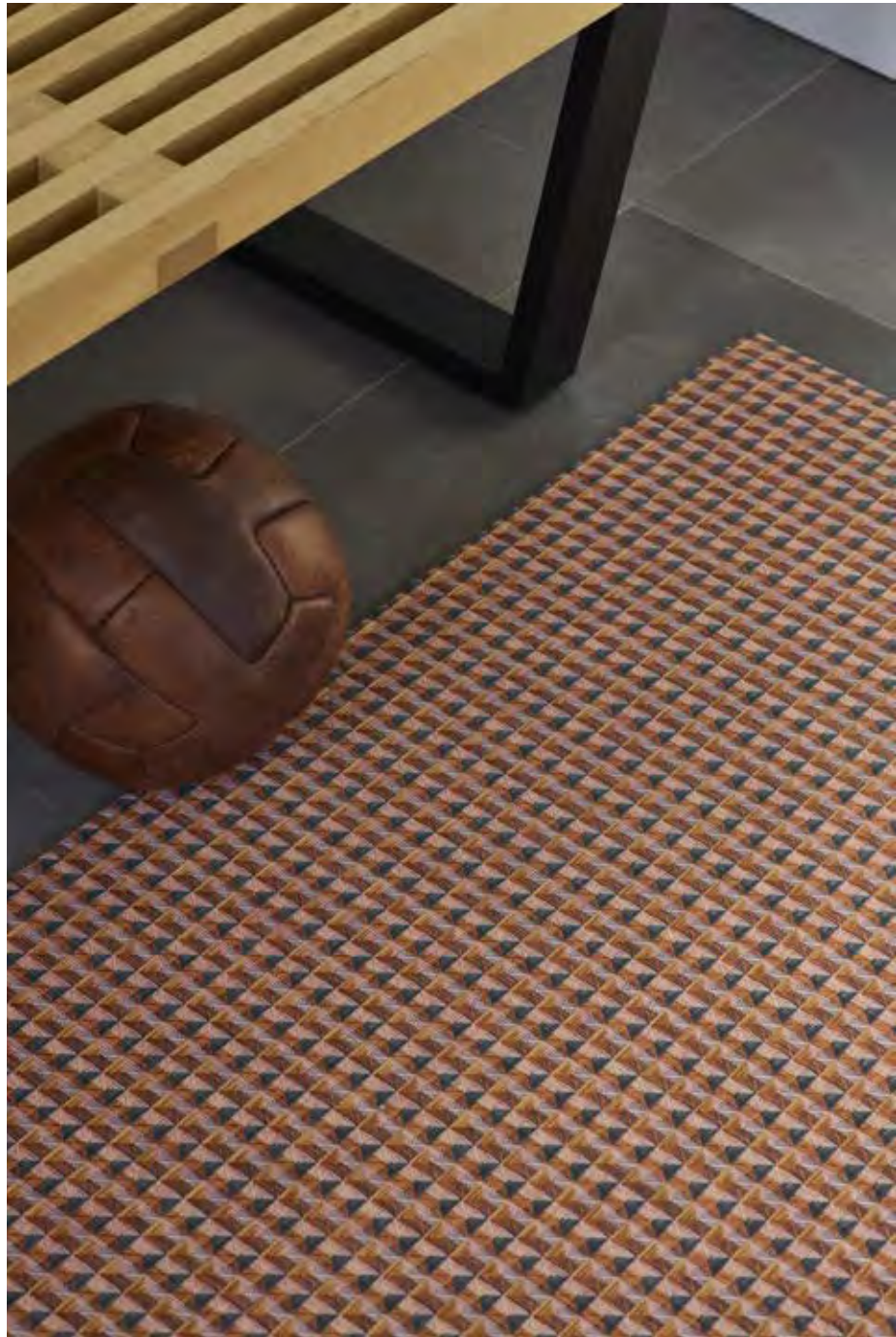
CRANE, Thyme



CRANE, Thyme







CRANE, Raspberry



Behind the Design

Led by a master weaver, the Chilewich design team develops weaves, patterns, prints, and color combinations in our New York design studio. Crane came to life on the studio's dobby loom, as bi-directional striping and nuanced hues transformed a simple weave structure into an textile of delightful depth.





NEW COLOR

Mini Basketweave



MINI BASKETWEAVE, Scarlet

Refined and resilient. Mini Basketweave is our signature Basketweave in half time. Instead of four yarns over four, Mini Basketweave is two yarns over two, resulting in a quieter, less textural surface.



SCARLET

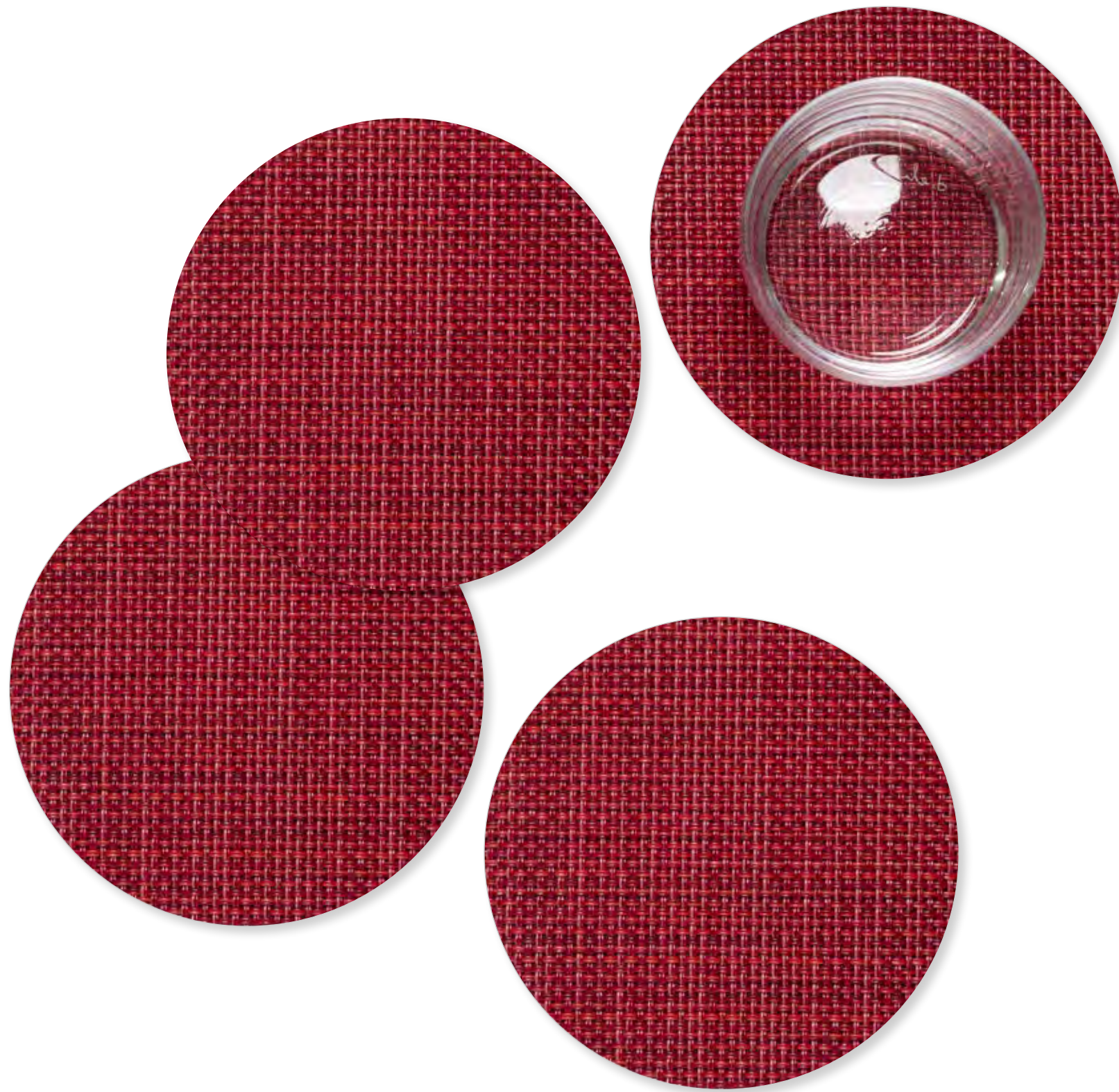


MINI BASKETWEAVE, Scarlet





MINI BASKETWEAVE, Scarlet



MINI BASKETWEAVE, Scarlet

Toast-worthy coasters. Banded in gift-ready sets of four, these coasters are backed in BioFelt, which combines a moisture barrier with a cushioned base layer made from recycled bottles.

NEW COLOR

Overshot





OVERSHOT, Thyme

Modern classic. With lively yet refined rows of interlocking concentric circles, Overshot is a contemporary interpretation of traditional textiles. This weave takes inspiration from vintage American coverlets. Used as the topmost covering on a bed and distinct from quilts, these woven textiles were especially popular during the early to mid-19th century. The earliest examples were made with an overshot weave, and this craft continues today.



THYME



TIGER EYE

Overshot is named for a weave structure with a long history and a distinctive construction: as the weft yarn jumps or “shoots” over the foundational plain weave of the warp yarns, a decorative pattern layer is created.



OVERSHOT, Thyme



OVERSHOT, Tiger Eye





OVERSHOT, Tiger Eye

NEW COLOR

Wave





WAVE, Tiger Eye

Naturally nuanced. Based on a traditional twill construction, Wave achieves its striking ombré effect by gradually shifting weaves. Our signature bi-color TerraStrand yarns are woven in such a way that the color seems to appear and disappear, breaking up the undulating lines.



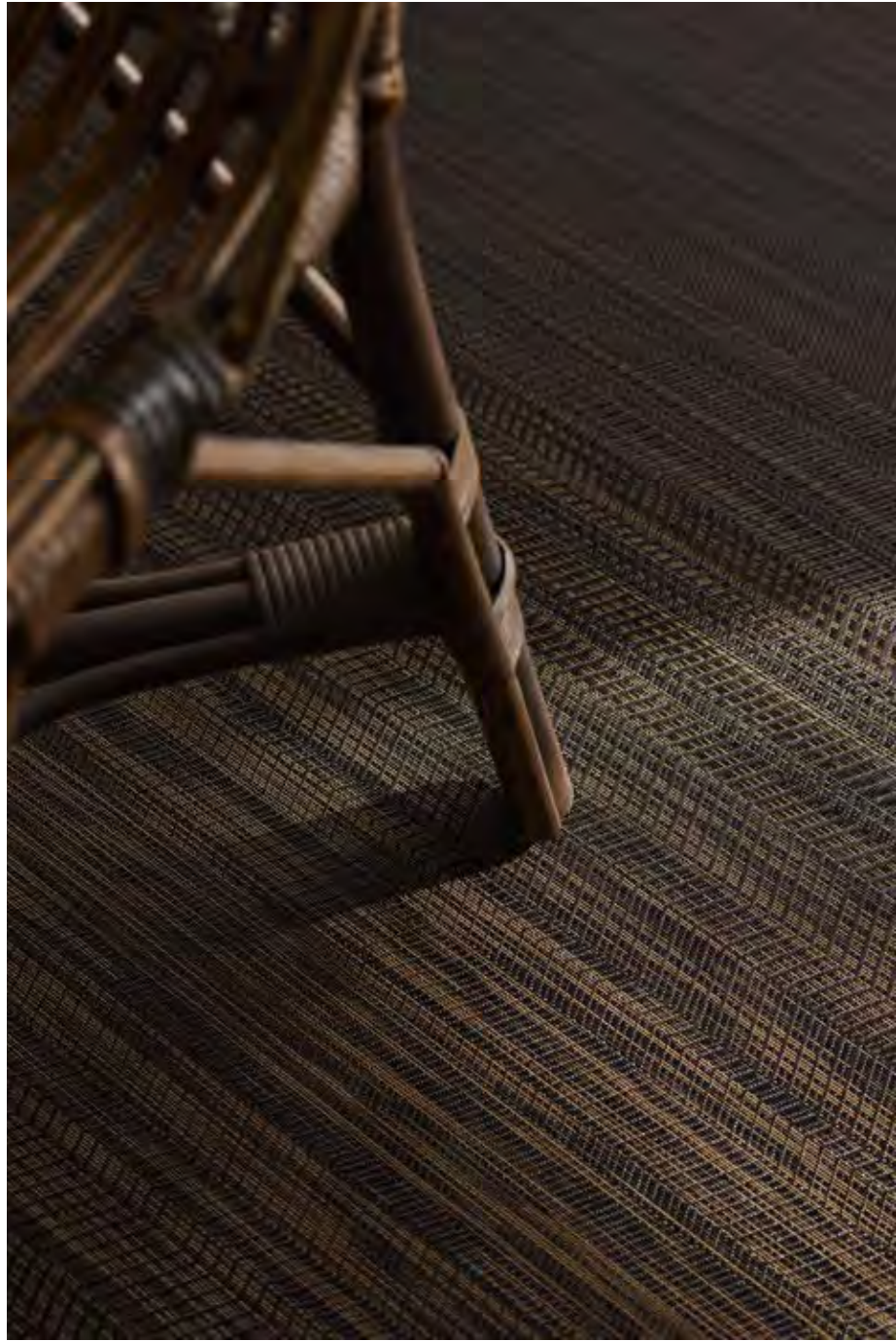
TIGER EYE

A warm welcome.

Burnished hues bring a new richness to Wave. Tiger Eye marks the first time this weave has featured a base of black rather than white.



WAVE, Tiger Eye



WAVE, Tiger Eye



MADE WITH THE MET

William Morris



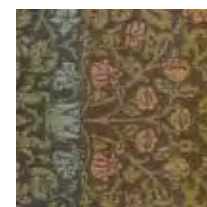


WILLIAM MORRIS, Dark Multi

THE
MET

chilewich.

A special edition developed in collaboration with the Metropolitan Museum of Art. Inspired by William Morris's (British, 1834–1896) , a textile design registered in 1883, this weave was developed through contemporary techniques with a nod to traditional craftsmanship. Sketching and digital rendering in the Chilewich design studio helped translate the inspiration into a modern woven structure, bringing new functionality to its organic forms, rich colors, and complex pattern repeats.



DARK MULTI



WILLIAM MORRIS, Dark Multi



"Have nothing in your
houses that you do not
know to be useful or
believe to be beautiful."
—William Morris



MADE WITH THE MET

Ernestine Zaumseil





ZAUMSEIL, Multi

THE
MET

chilewich.

A special edition developed in collaboration with the Metropolitan Museum of Art. Inspired by Ernestine Eberhardt Zaumseil's (American, 1828–1904) Branches and Vines Quilt (ca. 1875), this placemat combines rhythmic, organic movement with nature-inspired forms in an homage to traditional American quilt-making. Layers of hand-appliquéd texture are reimagined for modern life through precise printing on a durable woven textile that wipes clean.



MULTI

This design employs the Tree of Life pattern, popular for use on bedcovers since the 17th century. The first Tree of Life bedcovers were of Indian origin and featured a stylized tree bearing fantastical fruits and flowers. In Zaumseil's quilt, the trees and branches are especially realistic, in part because she seems to have traced leaves from actual trees and vines to serve as patterns for her appliquéd designs.





MADE WITH THE MET

Emeline Ludington



LUDINGTON, Multi

THE
MET

chilewich.

A special edition developed in collaboration with the **Metropolitan Museum of Art**. Inspired by Emeline Travis Ludington's (American, 1820–1887) (ca. 1850), this placemat offers a vibrant expression of florals, echoing the artistry of generational textile traditions. Layers of texture and hand-appliquéd blooms are reimaged for modern life through precise printing on a durable woven textile that wipes clean.



MULTI

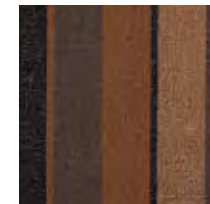




BOLT STRIPE SHAG, Honey

Stripes for all seasons. Broad bands of color are energized and harmonized by fine lines in Bolt Stripe. Thoughtfully selected hues—more subtle than those of most Shag mats—come together in two versatile palettes developed to complement indoor and outdoor spaces alike.

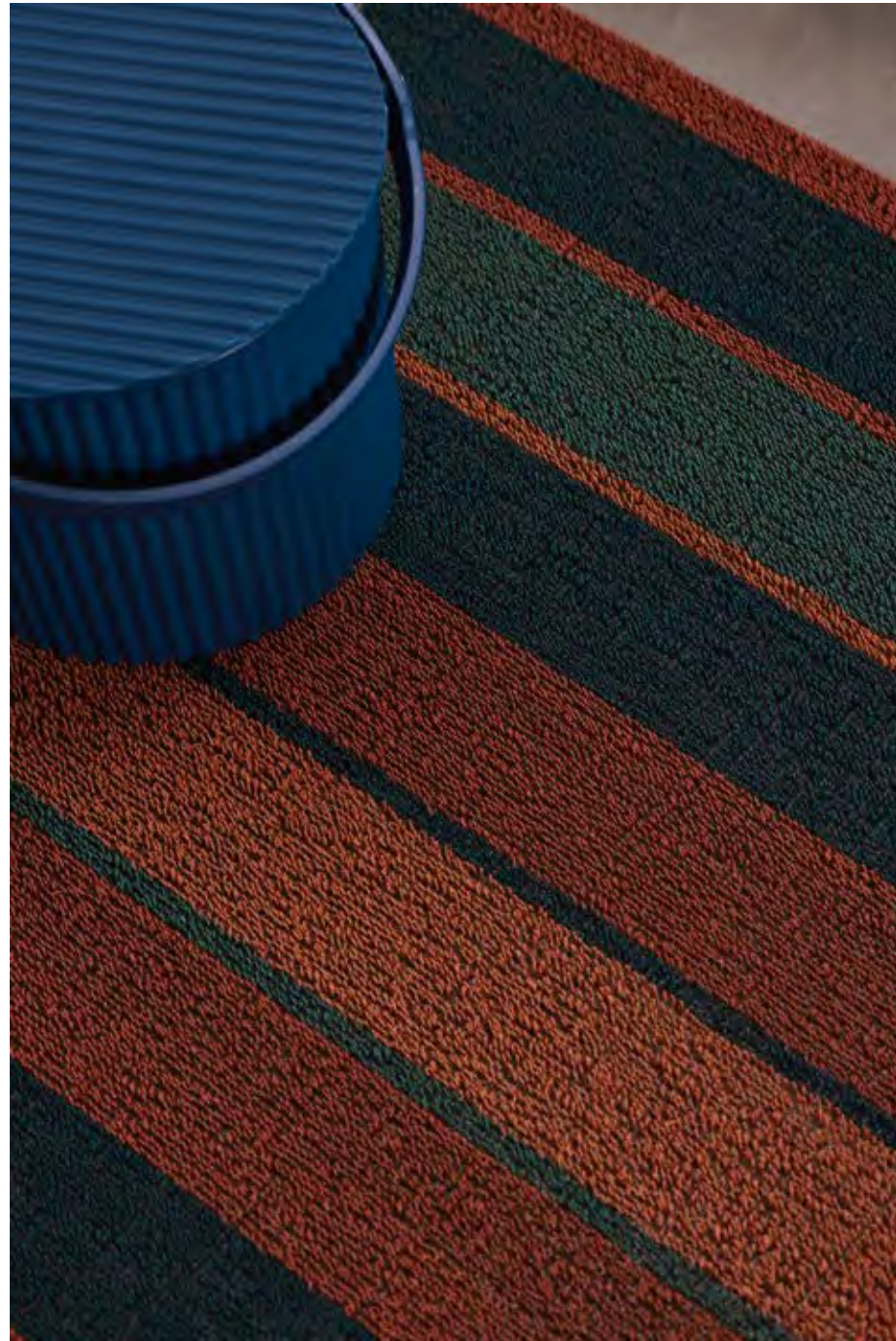
Made in the USA with tufted loops of TerraStrand yarns, Shag floor mats thrive indoors and out, all year round.



HONEY



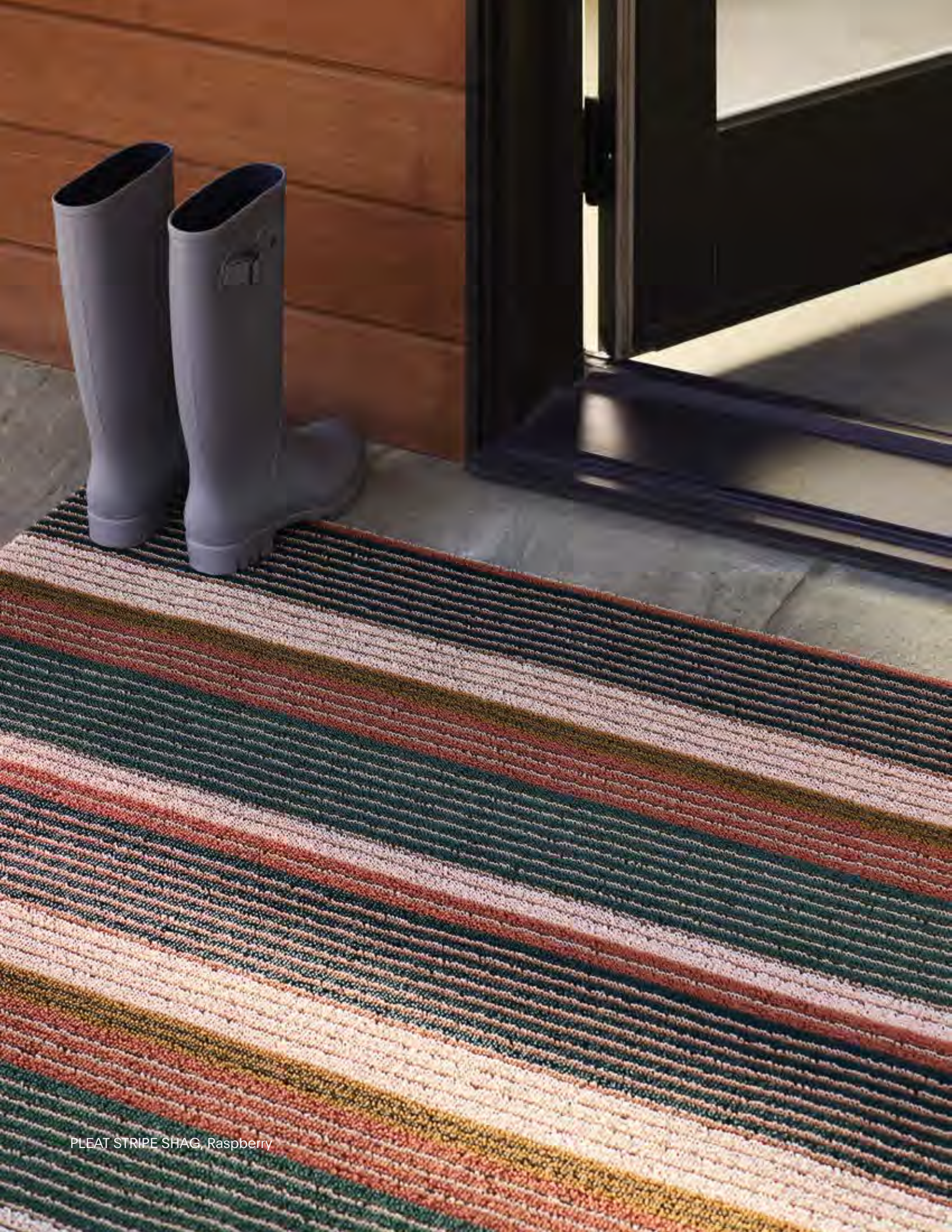
RASPBERRY



BOLT STRIPE SHAG, Raspberry





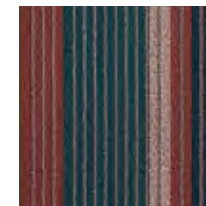


PLEAT STRIPE SHAG, Raspberry

New dimensions. Dynamic lines meet a refined approach to color in Pleat Stripe. Thoughtfully selected hues are sequenced in a play of high contrast and tonal harmony, creating a pattern that evokes the precision and dimension of finely pleated fabric.



OYSTER



RASPBERRY



PLEAT STRIPE SHAG, Oyster





HOLIDAY DEBUT

Ribbon



RIBBON, Frost

Joy to the table. A contemporary take on classic seasonal motifs, Ribbon combines the rich woven texture, proven performance, and easy care of stain-and fade-resistant TerraStrand yarns with the precision of printed graphics. The star motif radiates from tableware placed at the center.



FROST



JUNIPER

Our design team drew inspiration from mid-century Christmas cards for Juniper, a color combination that allows these placemats to go from holiday to every day with ease.



RIBBON, Juniper

HOLIDAY DEBUT

Bow



BOW, Juniper

Set the mood and spread the cheer. Presenting Bow: a festive new favorite to gather around, combining the rich woven texture, proven performance, and easy care of stain-and fade-resistant TerraStrand yarns with the precision of printed graphics.



FROST



JUNIPER

Simple to clean and easy to layer. In a round shape that makes the most of every inch of table space, these merry and modern placemats double as chargers.



BOW, Frost



Stay in the loop.

Learn about our latest weaves, design debuts, special events, and more at chilewich.com, and keep in touch with our textures by following us on Instagram at [@chilewich](https://www.instagram.com/chilewich).

Chilewich
39 West 19th Street
New York, NY 10011

T +1 212 679 9204
F +1 212 679 9205

Chilewich® and TerraStrand®
are registered trademarks.
© 2025 Chilewich I Sultan LLC.
All rights reserved.

chilewich.com

Photography:
Pippa Drummond, Megan Senior



chilewich®