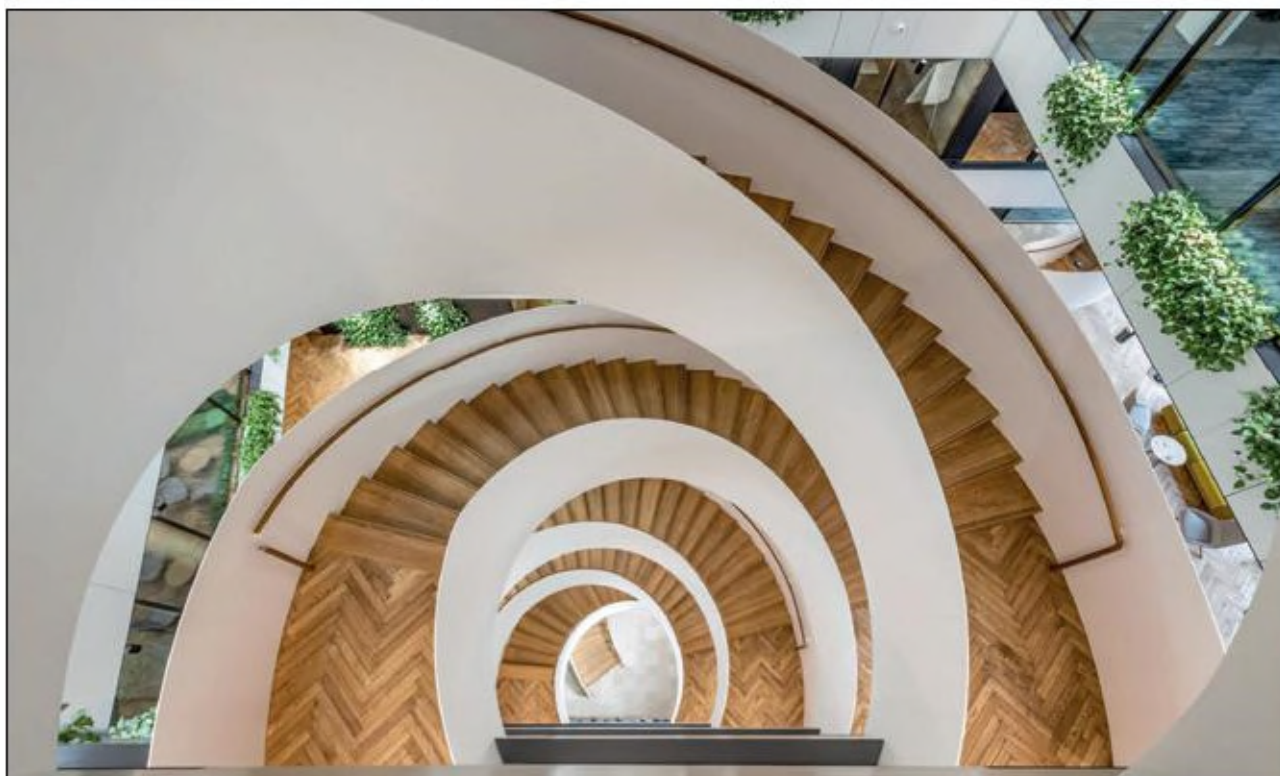
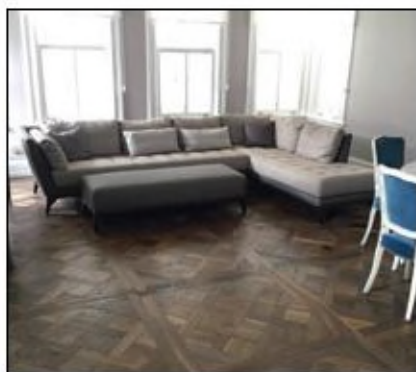




# The exceptional parquet flooring



# 2024 is GRAFFIC

## Know-how and craftsmanship...

Founded in 1960, Chêne de l'est and Mill & Woods are family-owned, multi-generational manufacturers, specialists in New & Reclaimed architectural surfaces, French Oak, Longleaf Heartpine and American white oak flooring and millwork.

Our families share a love of work well done, the passion for beautiful things, and we are very sensitive for the qualities of a fine oak flooring.

From the forest to your floor: All manufacturing steps are carried out in our workshops, guaranteeing real quality and traceability.

Thanks to our 4 manufacturing, finishing and sawing sites, 3 located in Lorraine (France) and one in Georgia (USA), we are able to offer a complete range of solid and engineered parquet flooring.

Experience and know-how enable us to produce parquet floors textures and colours that are characteristic of Chêne de l'est, in the finest finishes in the Plancher d'autrefois (Antique collection), Chêne scié (Sawface collection), Vieux de France (Fumed collection), Loft... and recently structured oak.

Chêne de l'est is the specialist for aged, sawn, brushed and structured parquet. Our aging technique is very close to natural aging, using a process we've developed ourselves. Just like the saw perpendicular to the blade with a machine we've specially designed for this purpose to achieve a smooth sawing action. What sets us apart from conventional parquet flooring.

Many of our finishes are handmade.

We are always looking for shades that reveal the depth and color of the wood, to be as natural as possible. We are constantly on the lookout for new colors. Today, we have over 250 finish possibilities.

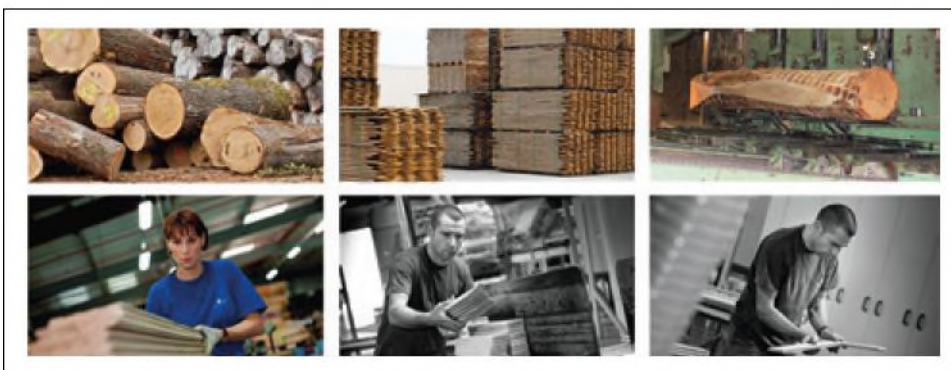
We offer herringbone, chevron, Versailles and other graphic patterns such as Vendôme, Cubic, Damier entrelacé, Damier cabochons, ... as well as Barrique and Elegance, bringing oak in its noblest form to your feet. The quality of our products has won over architects and interior designers internationally.

We have all types of customers, from renovation to the most luxurious projects, whether for the private sector or for a large group. We have some excellent references in the luxury hotel sector.

We provide advice and maintenance products to ensure the longevity of your parquet.

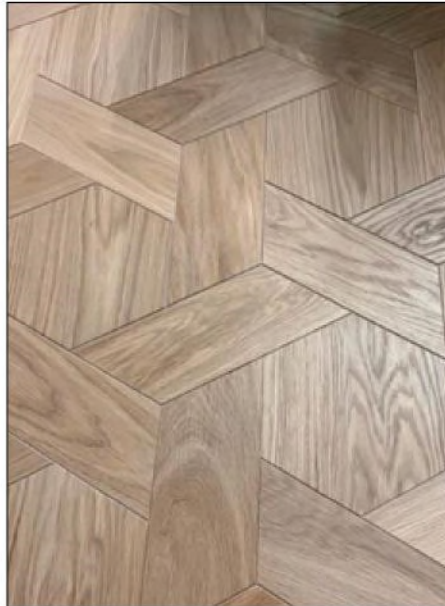
We guarantee an eco-responsible approach, working with local wood from forests all around our sites. Our French oak is PEFC-certified, from sustainably managed forests.

Our parquet floors are produced to French and US standards and meet the required performance levels. A+ label and CARB for our finished parquets, Real Wood, and CE standard.

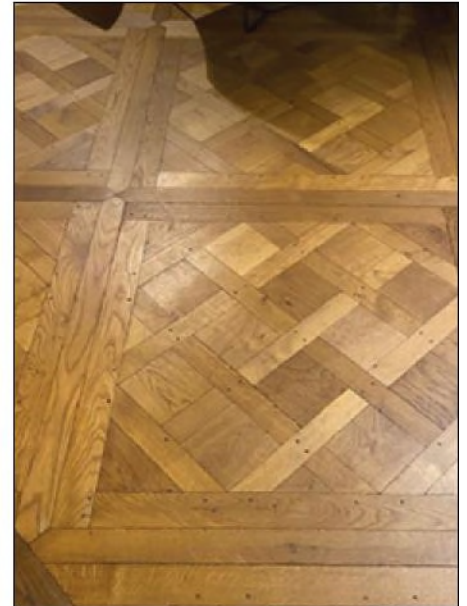




Vendôme - Brushed bleached



Hexagone - Brushed oiled



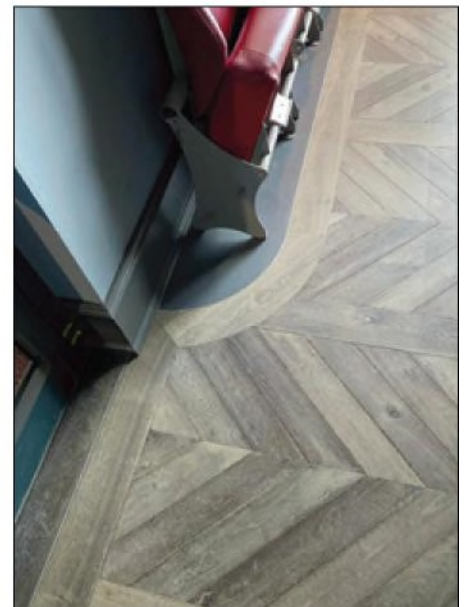
Versailles avec shuttle PA 5 doré antique



Damier entrelacé PA 94 Gallery ciré



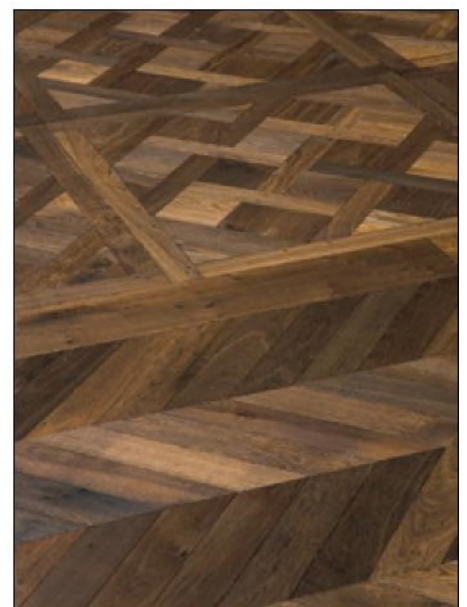
Chevron - PA 801



3D - Oiled



Chêne Elegance - width 60 - SCV 681 varnished



Versailles and chevron - Route 4



Versailles – Route 66 oiled



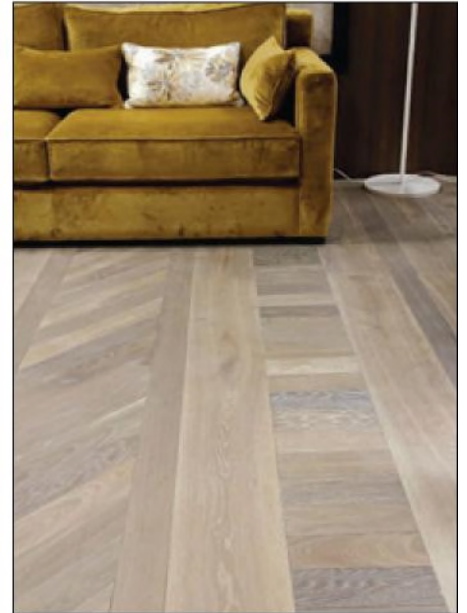
Vendôme – PE 410 B Extrême noir brossé



Chêne scié Barrique - SCV 681 varnished



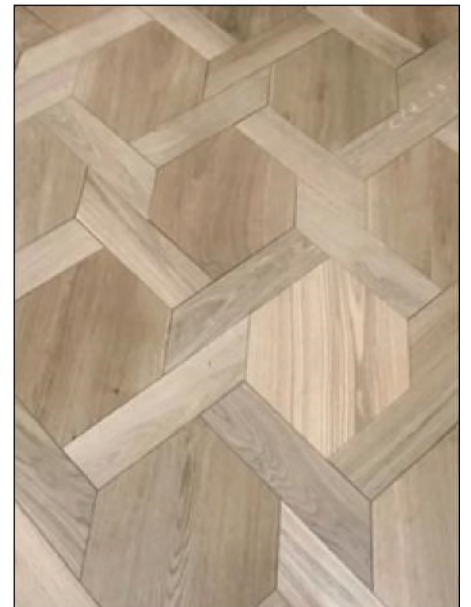
Veilleur de nuit - 2 AN VDF 917



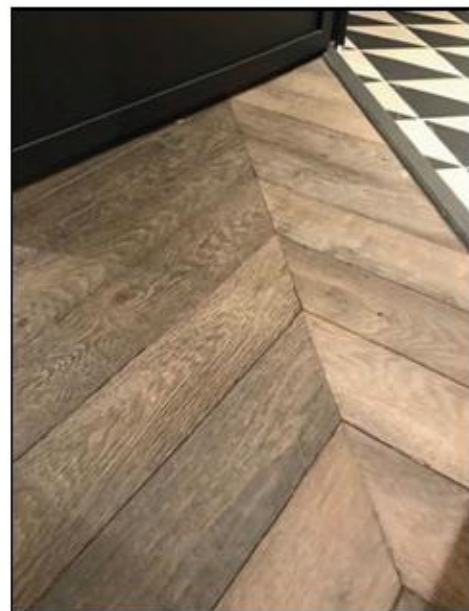
Damier entrelacé - PA 98  
Club 98 ciré



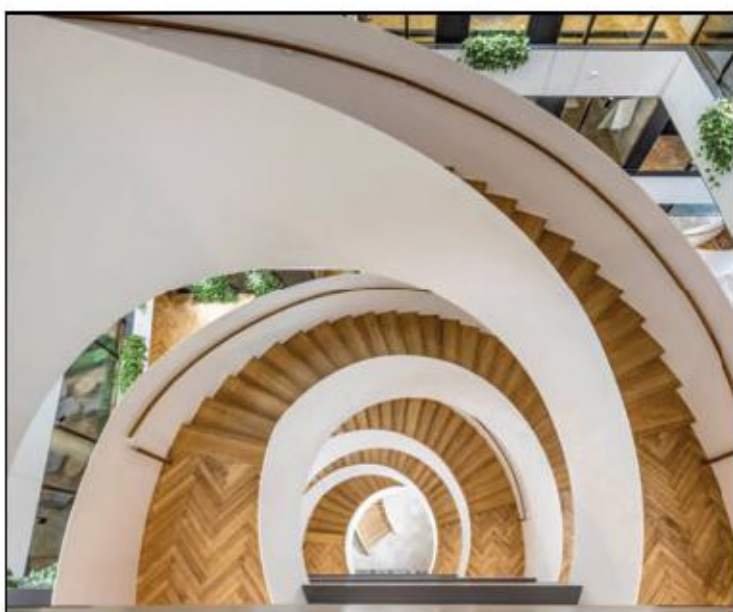
Cubic – Col 108 SD  
Structuré double oiled



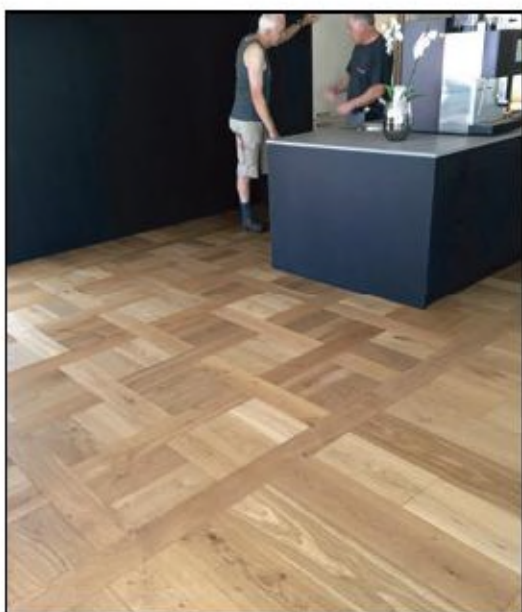
Vendôme – Brushed oiled



THE HOXTON HOTEL – Chevron – PA 801



POST LUXEMBOURG – Herringbone – Staircase, reception area, offices – PA 5 Doré antique



Damier entrelacé – Brushed oiled



Vendôme – Matt varnished



**Made 100% in France**, our floors are available in TOP 2.7, TOP 3.2, TOP 4.5 and solid oak 14, 21 mm.  
 Today, with the **3rd generation taking over**, we are more than ever  
 at your side to **guarantee you the very best in parquet flooring**.



FABRIQUÉ  
EN  
FRANCE



Entreprise  
Familiale  
Française



PARQUETS  
DE FRANCE



Produit en partie  
d'origine de la forêt  
www.pefc.org



**Chêne de l'est and Mill & Woods** – Manufacturer of solid and engineered wooden flooring

**Showrooms:** Gallery - 7 rue d'Uzès - 75002 Paris, FRANCE  
 117 Milledgeville Rd, Eatonton, GA 31024, USA  
 1440 Dutch Valley Place, Suite 750, Atlanta, GA 30324, USA

**Production:** 24, rue de la Fontaine - F 57910 Hambach  
 117 Milledgeville Rd, Eatonton, GA 31024 USA

**Shipping and pick-up:** 117 Milledgeville Rd, Eatonton, GA 31024 USA

**Phone:** 800.283.6038 - [hello@millandwoods.com](mailto:hello@millandwoods.com) - <https://millandwoods.com> - [www.chenedelest.com](http://www.chenedelest.com)