



ILLUMINATION
MIRROR AND CANDLEHOLDER COLLECTION

AINA KARI

G I O V A N N I
B O T T I C E L L I



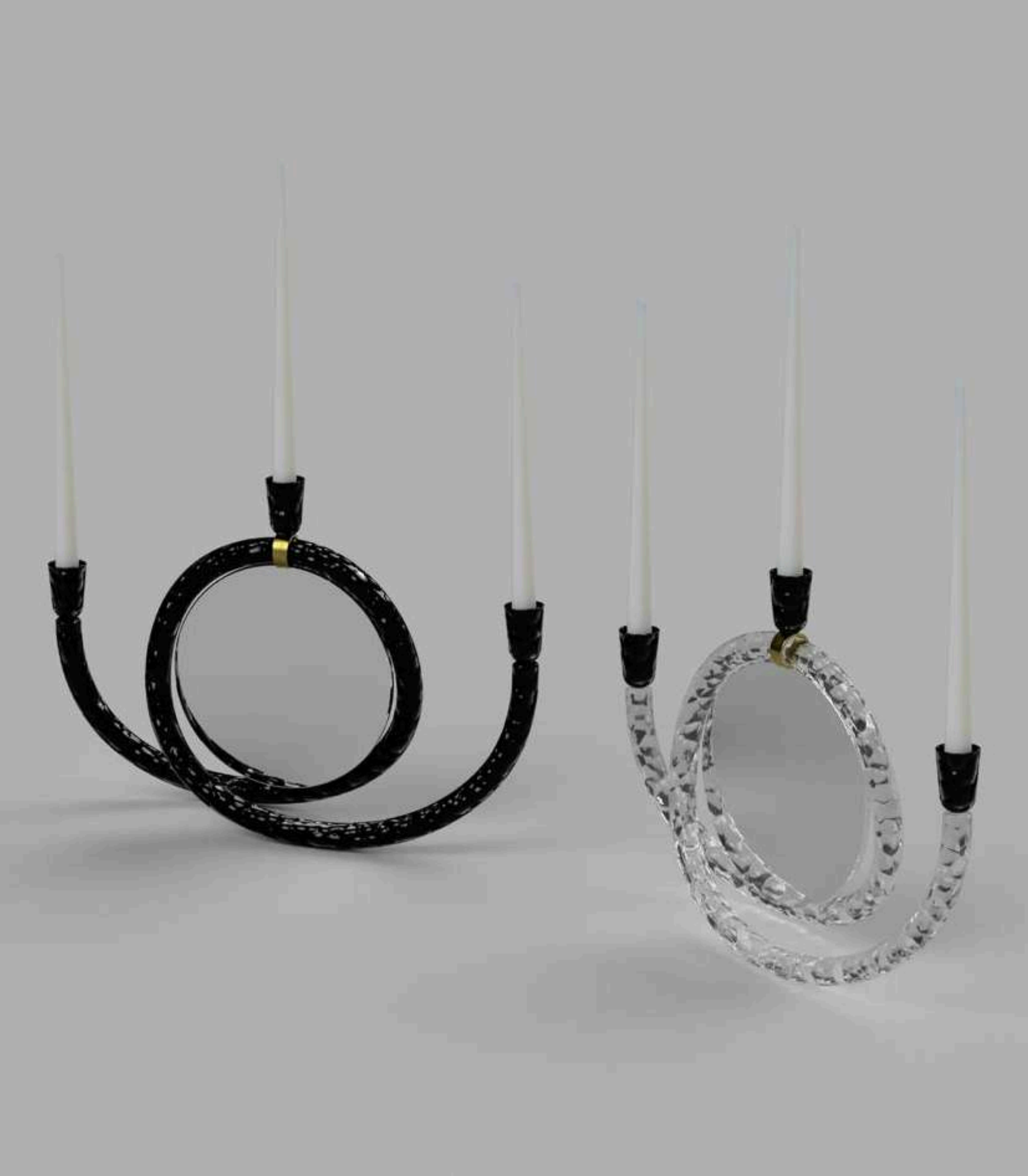
FROM THE BEGINNING...

Aina Kari and Giovanni Botticelli had the opportunity to be part of the last three years of EDIT Napoli, the innovative design fair created to support promote, and celebrate a new generation of designers.

It was the perfect hub to meet, study, and appreciate each other's creative work and to lay the foundations for a future joint collection.

The **** ILLUMINATION COLLECTION**** by Aina Kari and Giovanni Botticelli embodies a beautiful synergy between light, reflection, and meaningful craftsmanship. Lighting a candle and gazing into a water mirror evokes primordial human rituals, and this collection builds on those natural gestures with a refined modern approach.





MIRRORS AND CANDLEHOLDERS TABLETOP

This collection seamlessly merges form and function using unparalleled quality of Murano glass alongside a playful interaction of mirrors and colored glass, that captures and refracts light in a contemporary mood.

REFLECTING HAMMERED BRASS TABLETOP

The brass variant revives the traditional technique of hammering and shaping copper by hand. This element adds a tactile, handcrafted quality, enhancing the contrast between reflective mirror, and the textured warmth of metal.





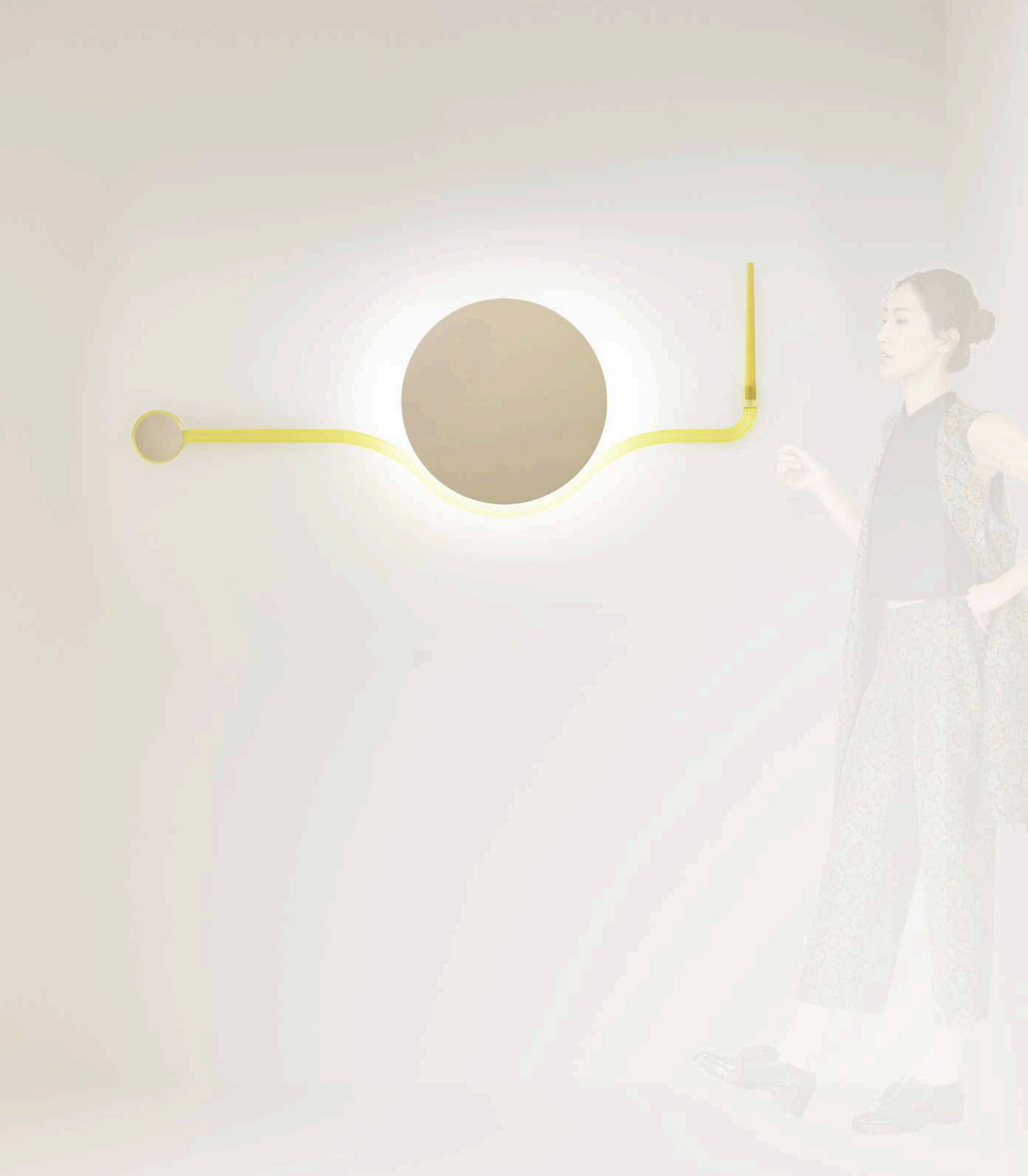
MIRRORS AND CANDLEHOLDERS TABLETOP

This collection seamlessly merges form and function using unparalleled quality of Murano glass alongside a playful interaction of mirrors and colored glass, that captures and refracts light in a contemporary mood.

MIRRORS AND CANDLEHOLDERS WALL DECOR

A different refined colored mirror with a minimal frame mouth-blown in Murano glass with a antique rigadin pattern design, giving it a unique texture and appearance. The wall coloured mirror & candleholder results in a piece that feels timeless yet current.





MIRRORS AND CANDLEHOLDERS WALL LIGHTING DECOR

SUN RISING' MIRROR

Lighting the mirror makes it not just a functional piece but also a decorative statement. Its minimal and unexpected candleholder frame allows the intricate details and 'brightness of the glasswork to stand out.

Mixing old techniques with elegant design creates a fascinating blend that pays homage to tradition while embracing contemporary aesthetics.

CRAFTING PRECIOUSLY ENCOURAGES THE DIALOGUE WITH THE SELF



MURANO GLASS

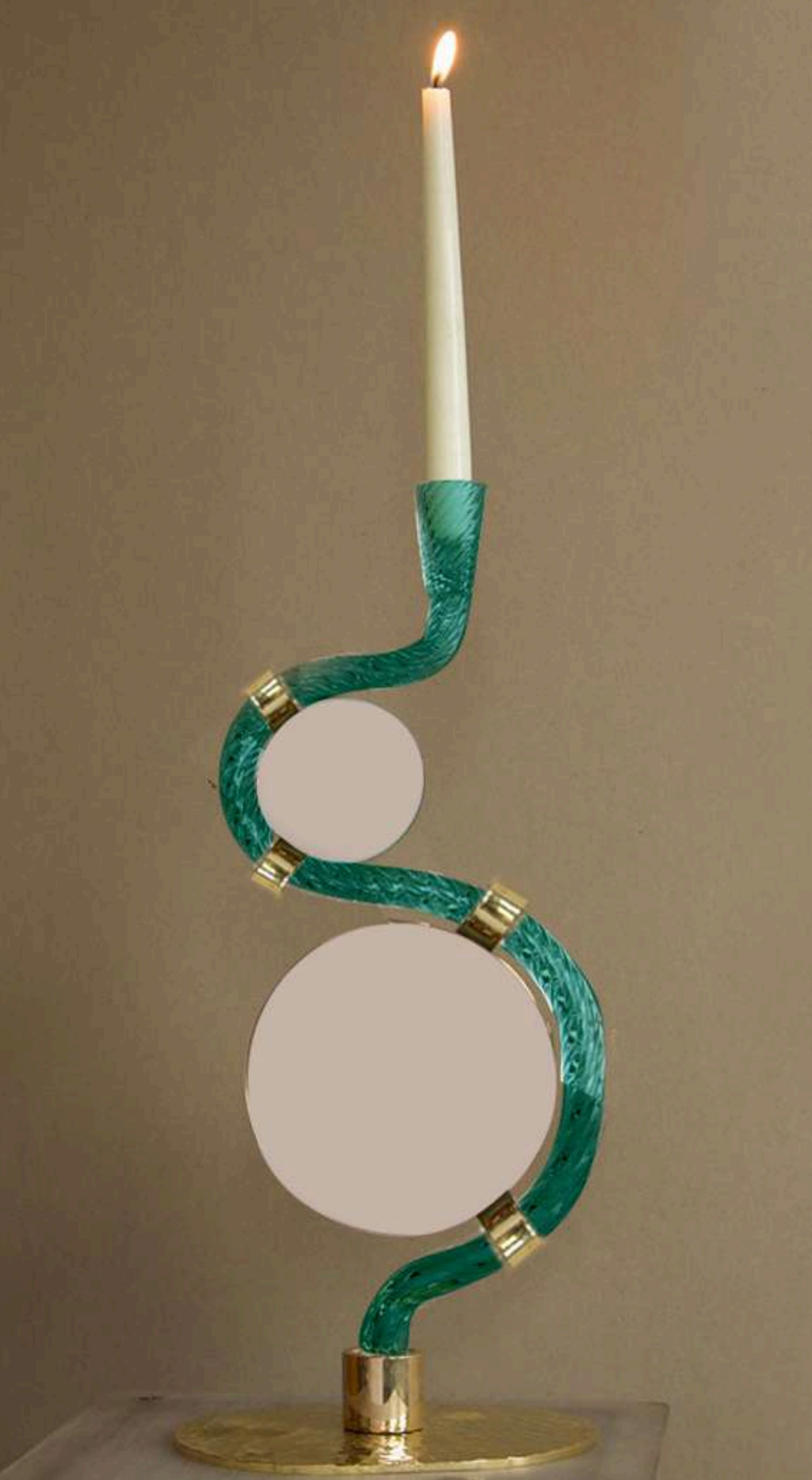
The transparency of Murano glass is enriched by the *rigadin* pattern—a source of discrete and mesmerizing glares.

HAMMERED BRASS

Copper provided a warming, sophisticated glow. to mix with , contrasting materials such as mouth-blown Murano glass and colored mirrors.

COLOURED MIRRORS

Decorative mirrors of significant proportions and reflective tabletop sculptures, each thoughtfully equipped with customizable functionalities.



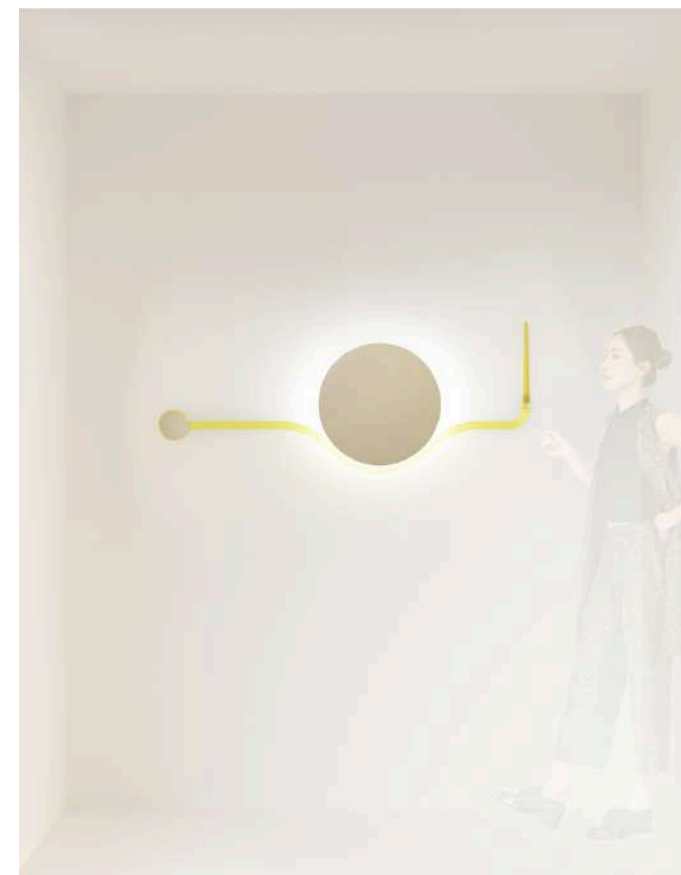
THE 4 BRIDGES OVER CANAL GRANDE

The Vertical Mirror and Murano glass
CandleHolder

Unexpected union of community engagement
and design

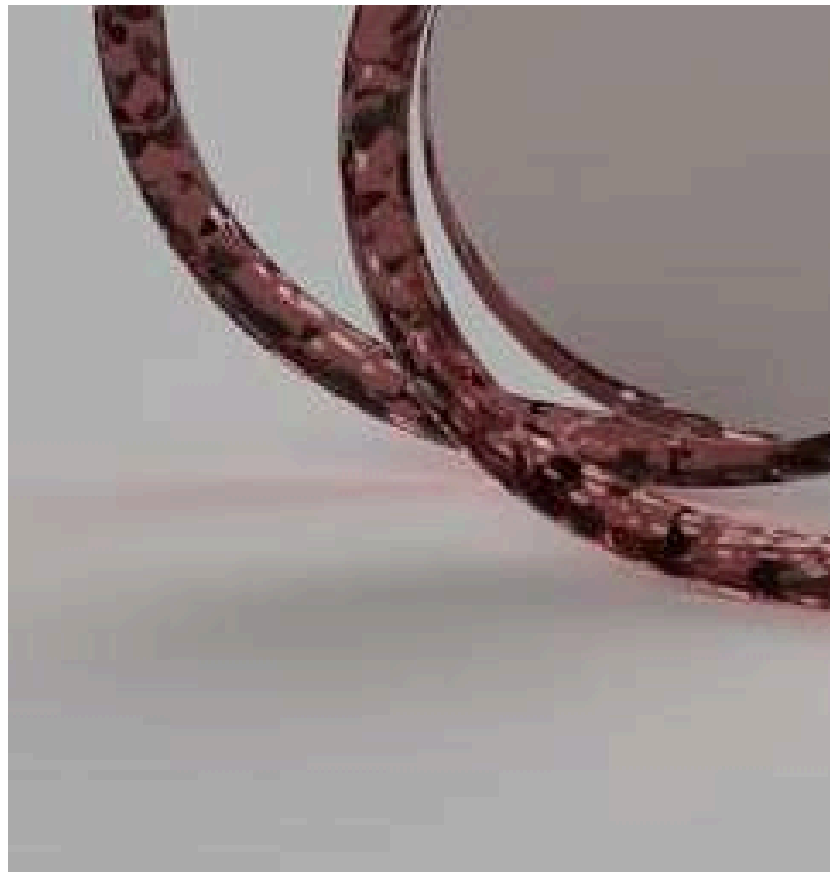
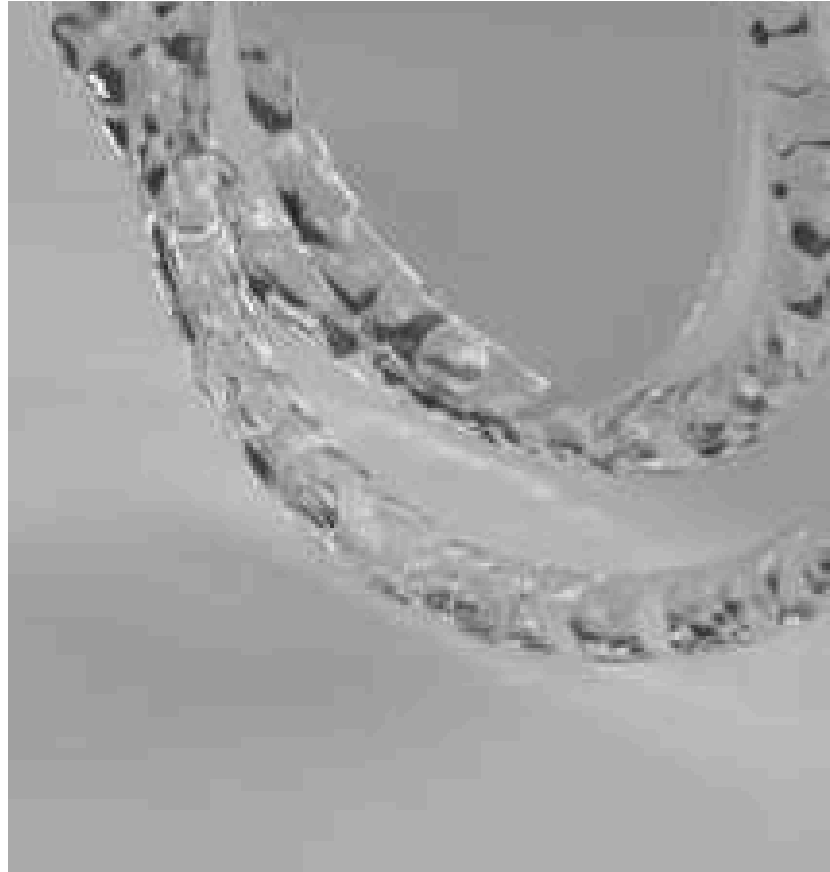


ILLUMINATION - WALL DECOR - WALL LIGHTING



THE RISING SUN

ROLLED DECOR
COLORS AND TEXTURE



A pair of antique brass scissors with ornate, curved handles and a pair of modern stainless steel scissors with straight handles and pointed blades are lying on a dark, textured surface. The brass scissors are positioned above the stainless steel ones. A semi-transparent white box is overlaid on the lower-left portion of the image, containing contact information.

WWW.AINA-KARI.COM

hello@aina-kari.com

WWW.GIOVANNIBOTTICELLI.EU

info@giovannibotticelli.eu