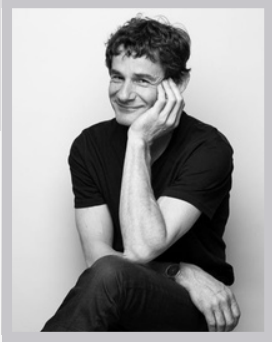


# THIERRY LAUDREN



ARTIST - WOOD SCULPTOR

## Recipe for a happy creation

I unveil objects with multiple faces: serious, naive, refined, complex but always uninhibited.

My material is living, rooted in the earth: wood, mainly oak, chosen with care and respect. A little technique, a lot of trial and error and an infinite number of dreams shape these works.

I draw inspiration from artists, without dwelling on them for too long: Pierre Soulages, Kasimir Malevitch, Diégo Velázquez.

My recent research has led me to nesting, exploring the alchemy that transforms flat structures into voluminous works to be assembled and disassembled, playing with space like an air sculptor.

I leave aside decoration magazines and ephemeral trends, preferring to probe a society torn between the desire to live for oneself and the desire to live with others.

I'm looking for beauty that's alive, powerful and astonishing, that resonates far beyond fleeting luxury.

For the past thirty years, I've been honing this recipe in total freedom, with my feet firmly planted in Brittany, working every day in my studio in Rennes.



LA DAME  
DE TREFLE

Playful and delicate, this screen finds its balance through the precise arrangement of its elements. Too flat and it collapses like a house of cards. With its acidic allure, it takes its inspiration from Velázquez's Les Ménines to embody a faceless lady, where the balance between stability and fragility gives it all its strength.

This coffee table articulates and disarticulates, assembles and disassembles, reinventing itself as both table and bench. Destructured in form, it defies convention: nothing is straight, everything is up to the imagination.

L'ASSEM-  
BLABLE

