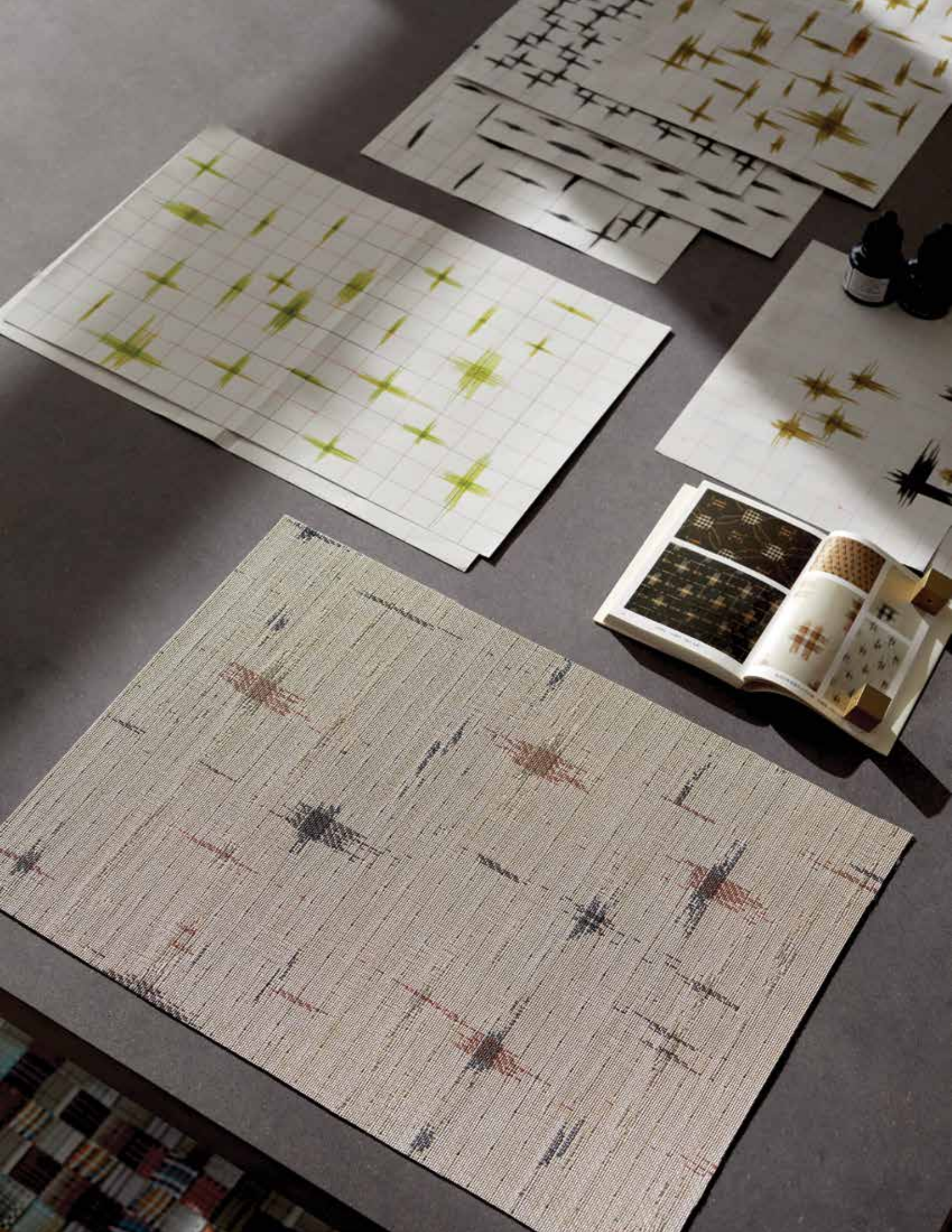


A high-angle photograph of a light-colored wooden table. On the table, there are three circular placemats with a light-colored, textured fabric and abstract blue and red splatters. One placemat in the foreground holds a dark coffee cup on a saucer with a spoon. Another placemat in the middle holds a white ceramic coffee carafe with a cork stopper. A third placemat is visible in the background. A wooden chair is partially visible on the left side of the table.

Lookbook  
Fall/Winter  
2024

chilewich®



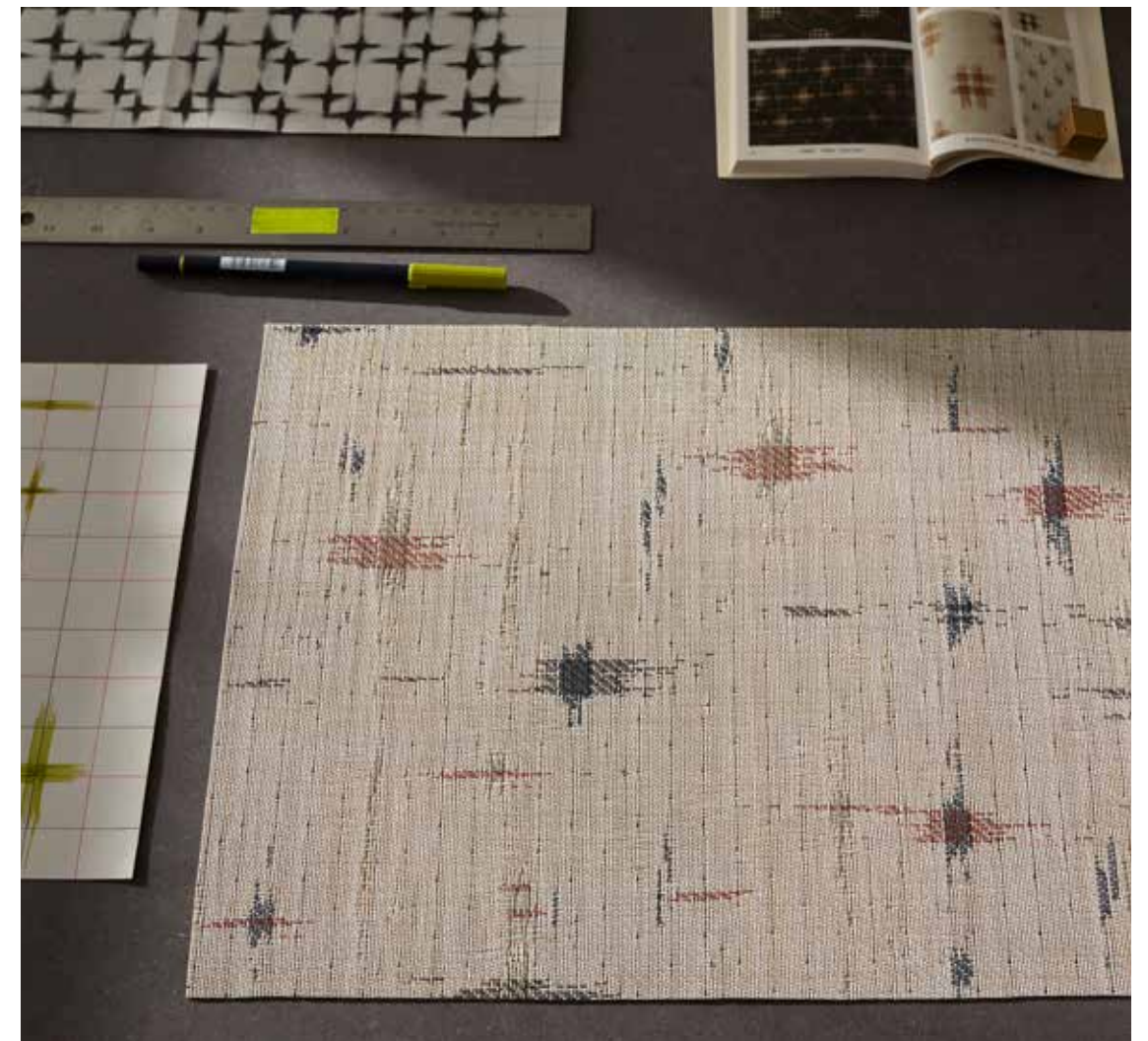
Imbued with warmth through rich texture and finely calibrated color, the Fall/Winter collection honors tradition while embracing experimentation. It is an invitation to explore unexpected textures and see old favorites in a new light.

All products are made in the USA and suitable for indoor and outdoor use.

# Behind the Design

In developing Spark, our design team looked to the captivating patterns of ikats—textiles created by resist-dyeing yarns before they are woven. The natural movement of yarns on the loom results in motifs with distinctively feathered edges.

Through a series of sketches, the team explored the spirit and intricacy of ikats in a range of forms and refined these studies into one generously scaled composition. This was then translated to the loom and came to life as a double weave flecked with blurred-edge bursts of color on a multi-tonal background.



# Spark



SPARK, Cider



**On the bright side.** Spark is based on traditional ikats, created by resist-dyeing yarns before they are woven. Our design team looked to this multifaceted process—in which bundles of yarn are wrapped together, dyed in sequence, and then aligned on the loom to create a desired pattern—to inspire the development of a double weave flecked with blurred-edge bursts of color that extend vertically or horizontally, intersecting in dynamic crosshatchings.



ALMOND



CIDER

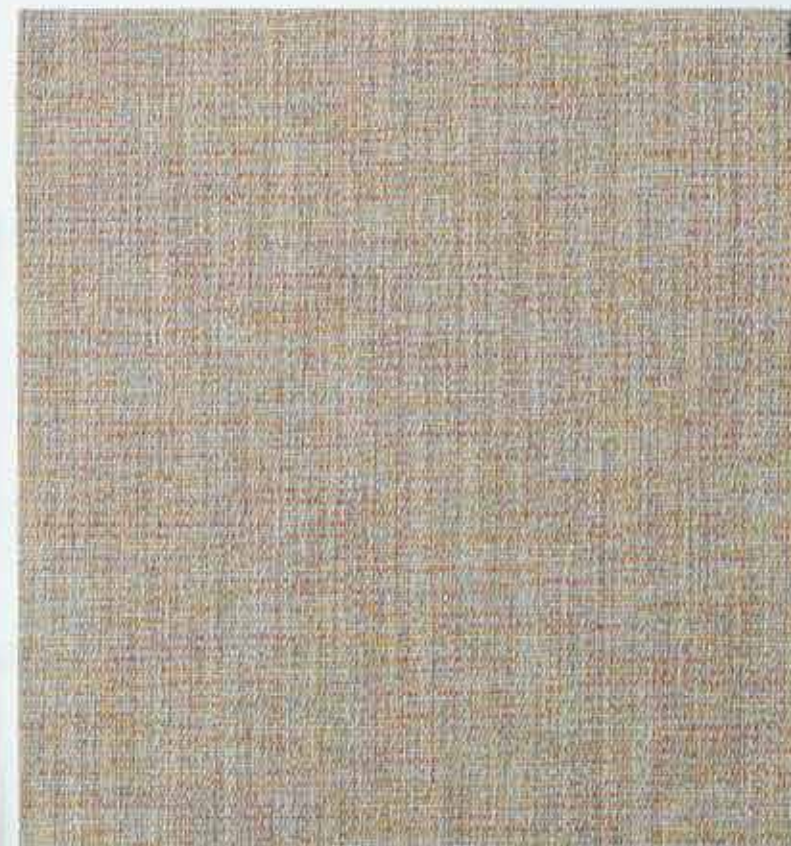
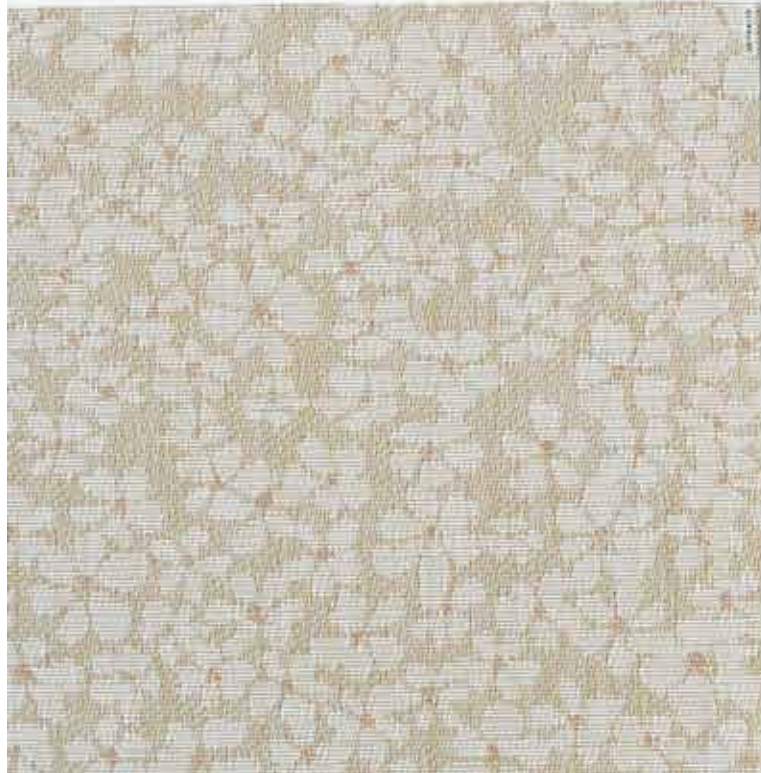


SPARK, Almond



**One of a kind.** Spark was developed to have a large repeat. This not only enhances the continuity and organic character of the weave but also makes each placemat unique.









# Flora

FLORA, Almond



FLORA, Almond

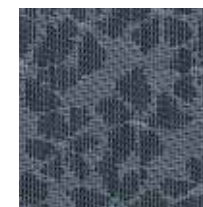
**Natural wonder.** A fresh interpretation of classic floral patterns, Flora is a shape-shifting weave. Its richly textured surface of scattered blooms, each with a pop of color at the center, playfully balances representation with abstraction.



ALMOND



MICA



ZEPHYR



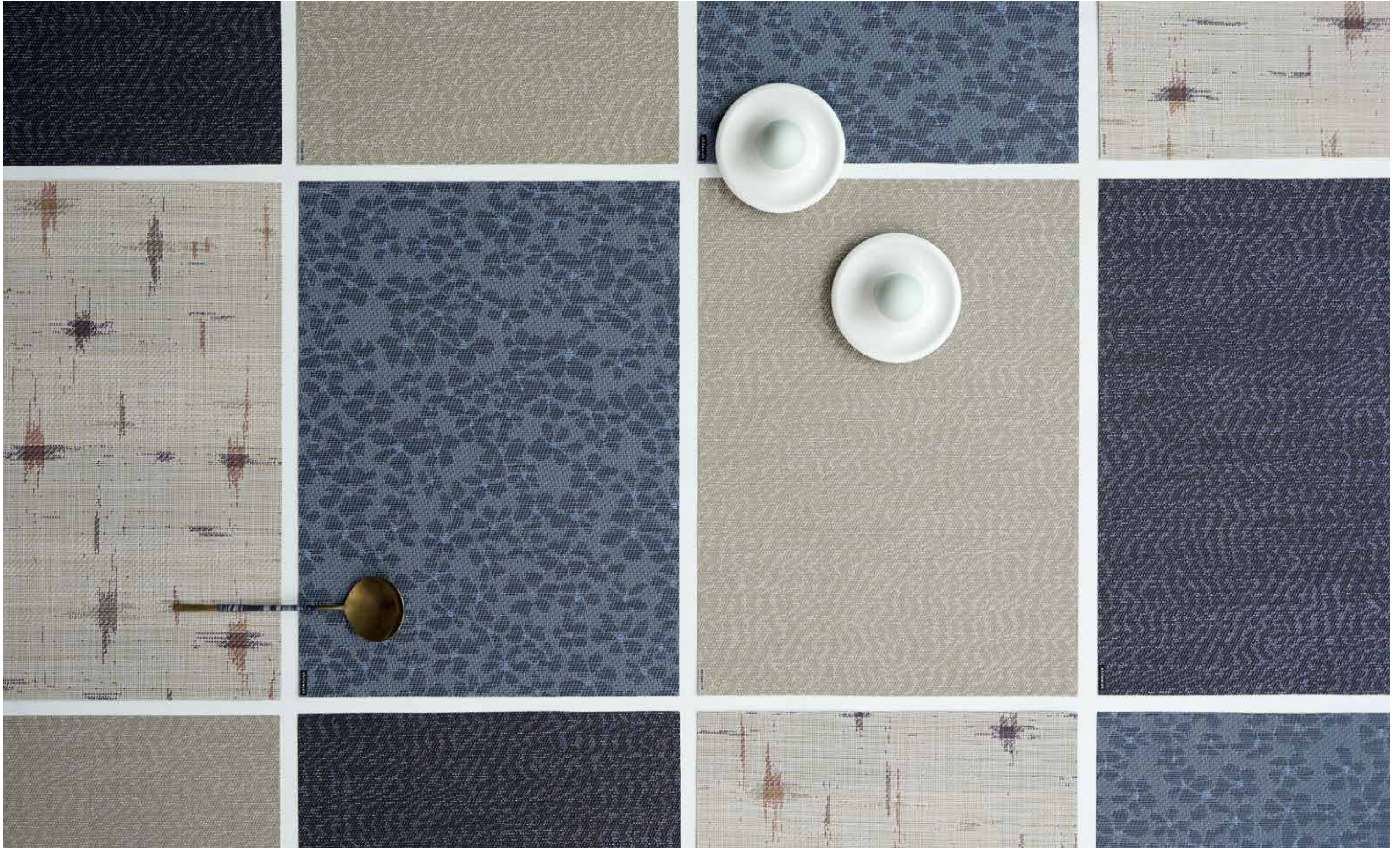
FLORA, Almond

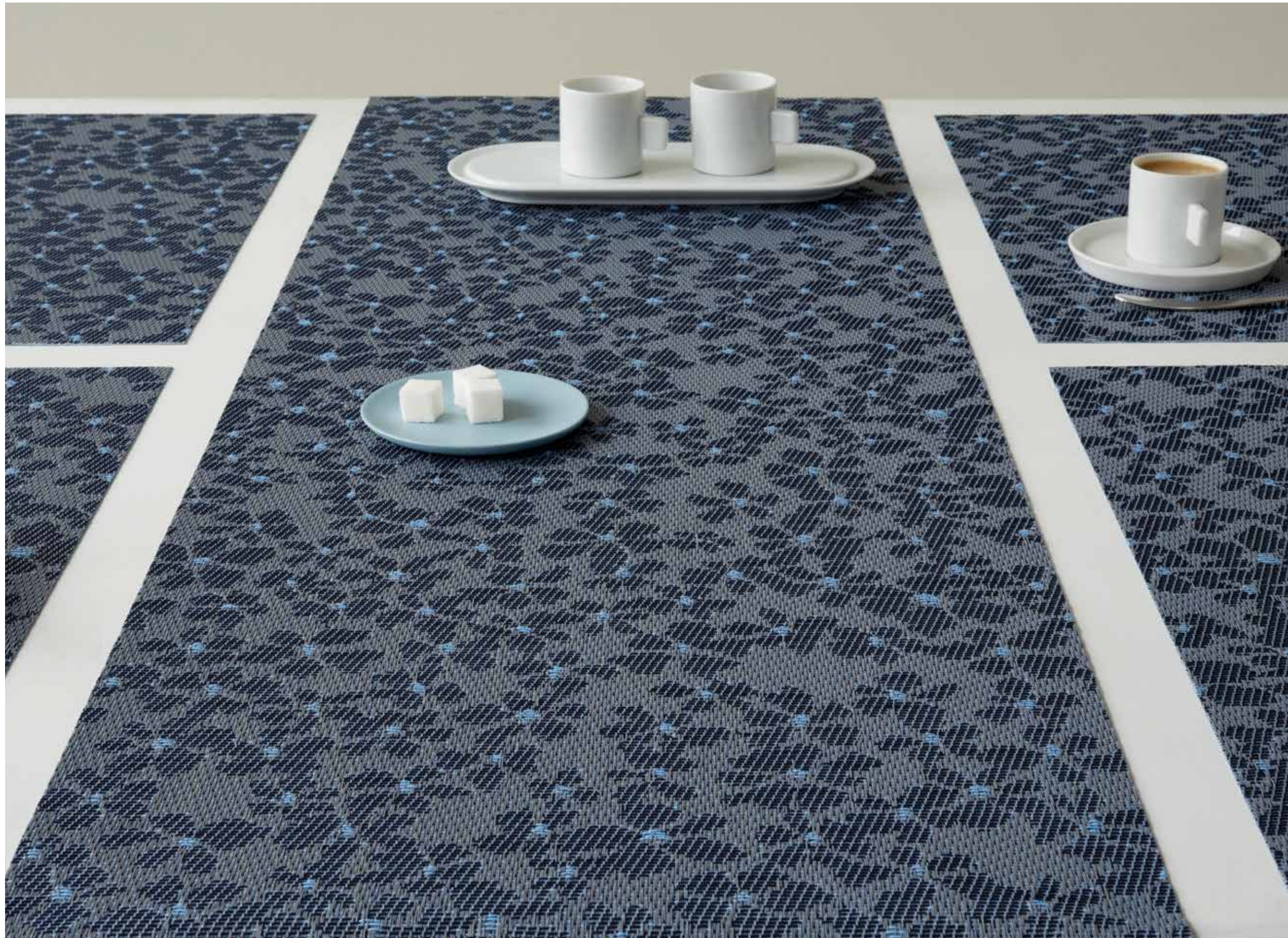


FLORA, Mica









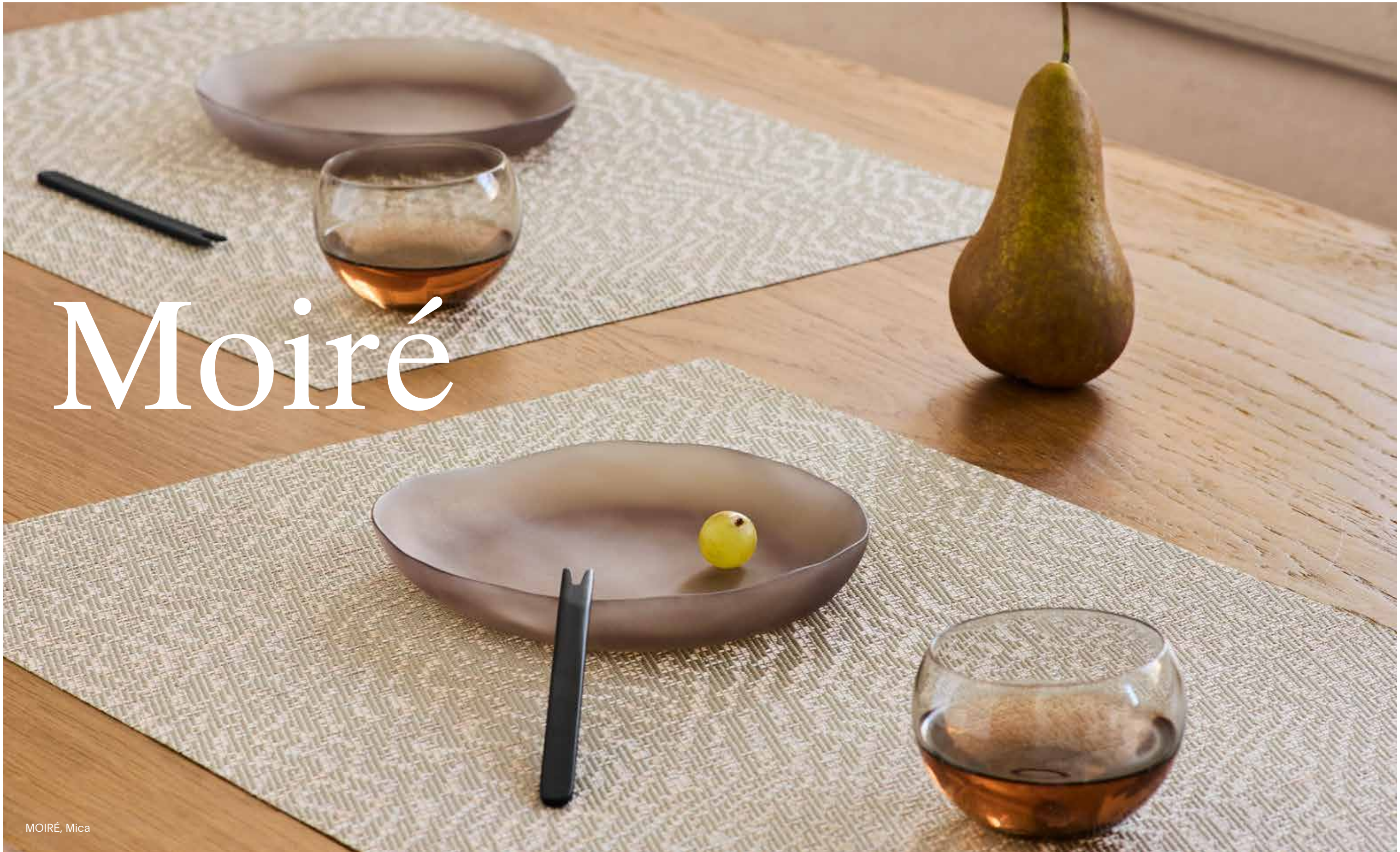
FLORA, Zephyr



FLORA, Zephyr







# Moiré

MOIRÉ, Mica



MOIRÉ, Mica

**Outside the lines.** Inspired by textiles that use plied, or multi-strand, yarn to create wave-like effects, Moiré recreates this distinctively rippled quality through pattern. Versatile tonal hues come together in textural striations that evoke tiger stripes, curly lamb fur, or dappled sunlight.



MICA



MOCHA



ZEPHYR



MOIRÉ, Mica



MOIRÉ, Mocha







MOIRÉ, Zephyr



NEW COLOR

# Bouclé



BOUCLÉ, Tart





BOUCLÉ, Tart

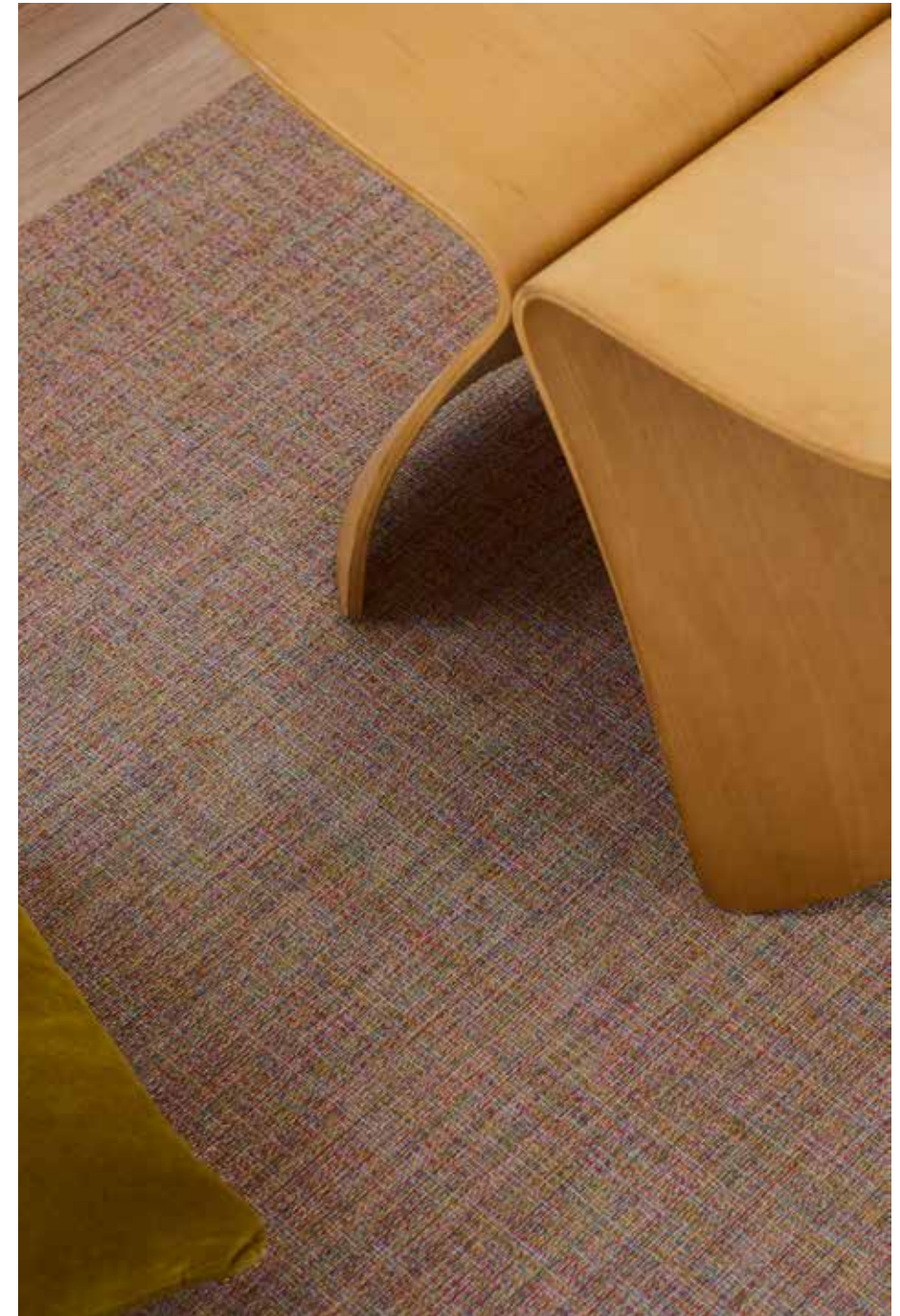
**Turn up the texture.** Composed of a tactile mix of yarns, Bouclé is a crepe weave that adds visual interest without dominating. It evokes the nubby, character-laden surface of fine fabrics, with the added durability and easy maintenance of all things Chilewich.



TART

**A custom cover no like other.** Originally developed for use by leading restaurants, the Worktop combines a durable, easy-to-clean woven surface with a waterproof, non-slip backing.





BOUCLÉ, Tart

NEW COLOR

# Mosaic



MOSAIC, Almond



**Shape shifter.** A traditional diamond twill weave is reimagined in Mosaic. Softened by a prismatic veil made possible by our signature bi-color yarns, this design is made special by a lattice of unique forms: each diamond is a different small weave pattern.



ALMOND



MOSAIC, Almond









NEW COLORS

# Sampler

SAMPLER, Wheat



SAMPLER, Wheat

**New traditions.** In Sampler, paired rectangles come together, introducing a distinctive weave as they overlap. This dynamic design is inspired by samplers that were used to learn and demonstrate darning: a sewing technique for repairing holes or worn areas in fabric by replicating the structure of the original material. Dating back to at least the 18th century, these samplers typically covered small pieces of cloth in darning “blocks” of various weave structures in a variety of colors to make intricacies visible. Our modern-day interpretation also rewards closer looks.



FIR

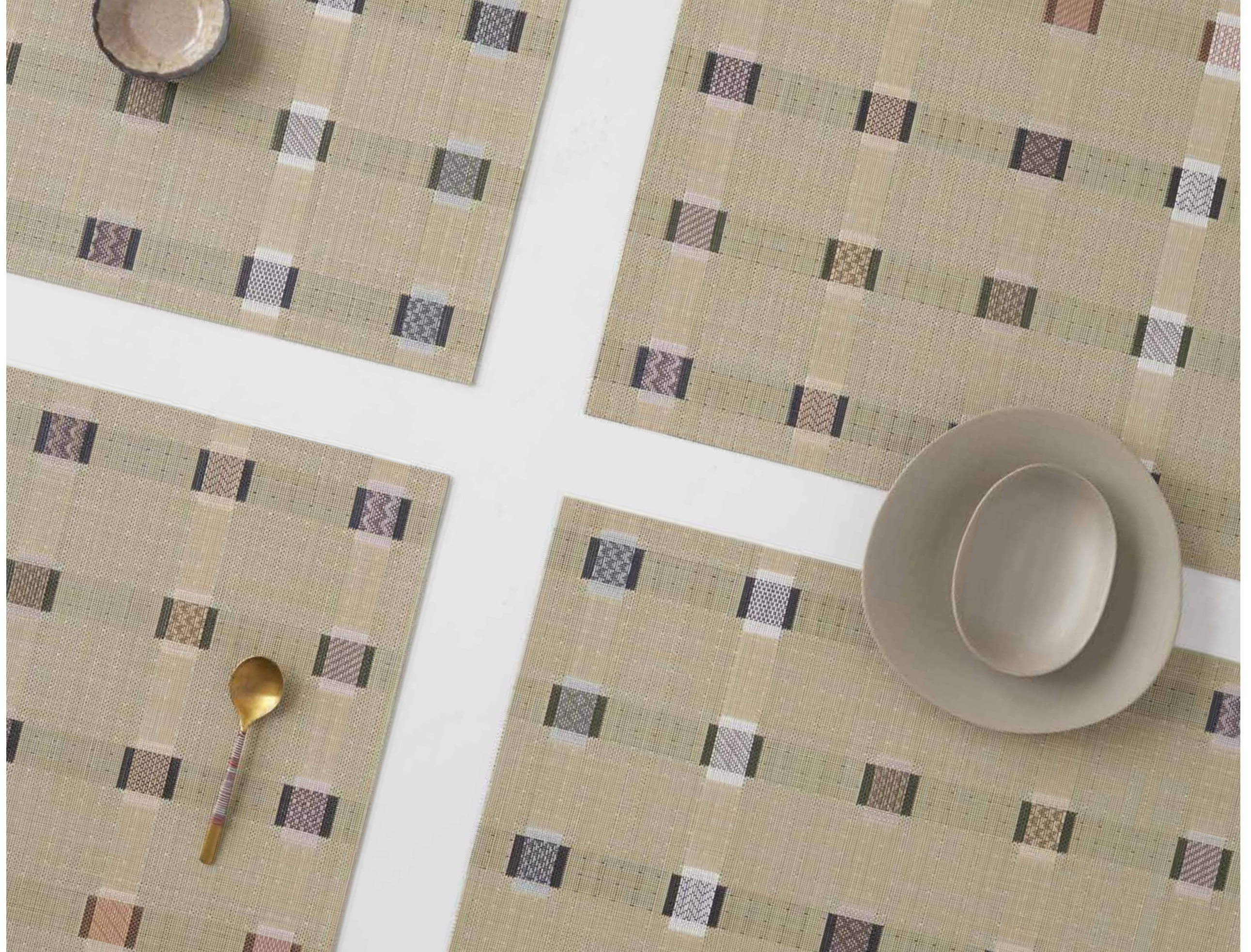


WHEAT



SAMPLER, Wheat

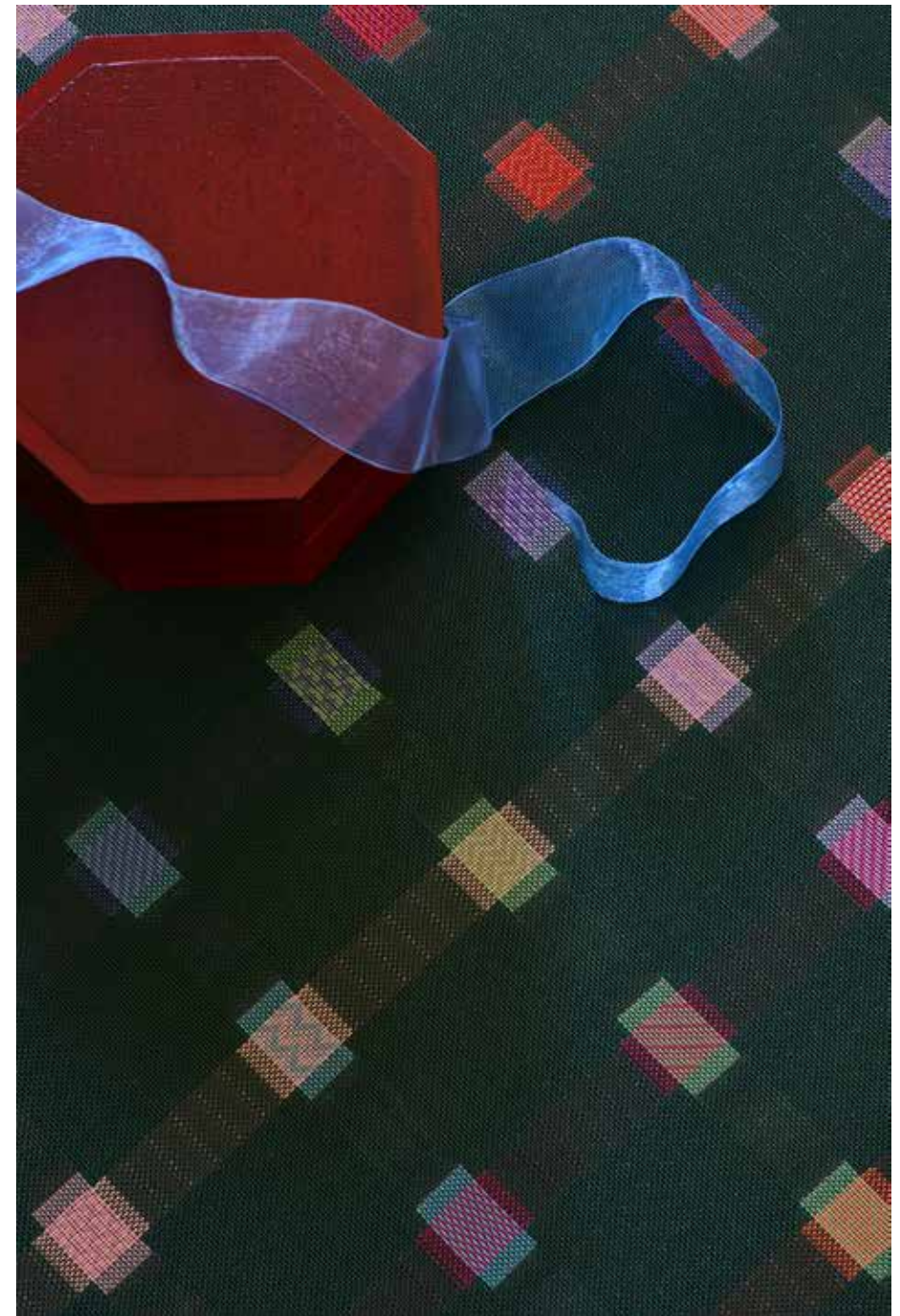
**Palette play.**  
A NYCxDESIGN Awards honoree upon its debut in 2023, Sampler shows its range in two new color combinations.





SAMPLER, Fir





SAMPLER, Fir



# Duo Stripe Shag

DUO STRIPE SHAG, Mocha

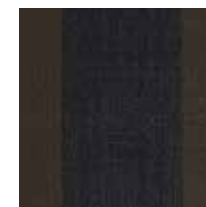


DUO STRIPE SHAG, Mocha

**Power couple.** Playful color blocking meets tufted texture in Duo Stripe, which places expanses of two carefully chosen hues into lively conversation.



BERRY



MOCHA





DUO STRIPE SHAG, Berry





# Even Stripe Shag

EVEN STRIPE SHAG, Berry



EVEN STRIPE SHAG, Berry

**Lively lines.** Narrow bands of thoughtfully sequenced hues make Even Stripe a dynamic and dimensional exploration of the power of color.



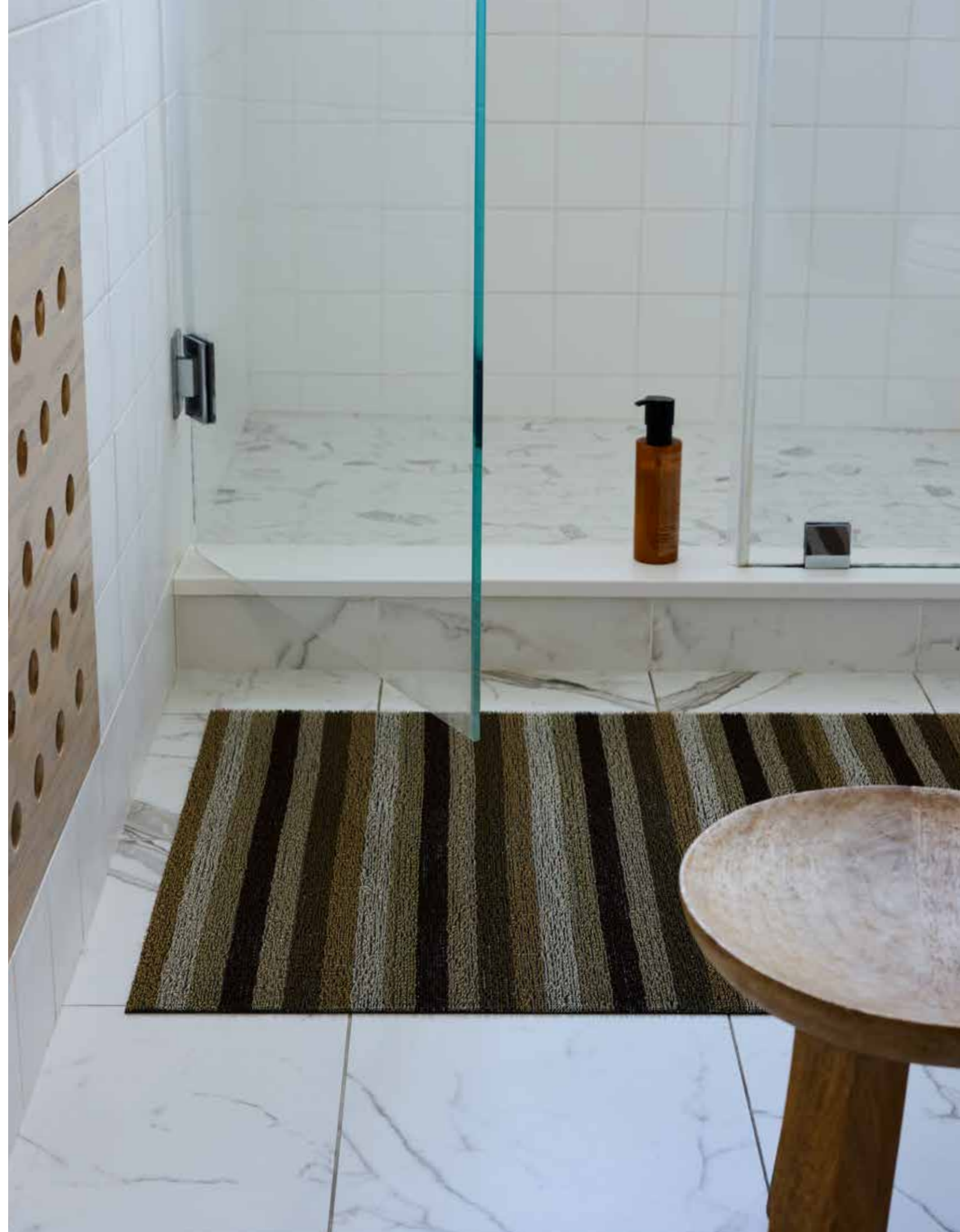
BERRY



MOCHA



EVEN STRIPE SHAG, Mocha



NEW COLOR

# Solid Shag



SOLID SHAG, Super White

**Pale fire.** Debuting in highly anticipated white on white for Fall/Winter 2024, Shag mats are made by tufting looped TerraStrand® yarns onto a primary backing and then binding them onto a base of sturdy vinyl. These richly textured, quick-drying mats are ideal for entryways, bathrooms, kitchens, mudrooms, patios, pool areas, and beyond. Resistant to fading, staining, mold, mildew, and chlorine, they thrive indoors or out, all year round.



SUPER WHITE

**Peak performance, lower impact.** Our design team developed the Fall/Winter collection's Shag mats with sustainability in mind. All make use of surplus yarns rather than requiring the creation of new yarns.



SOLID SHAG, Super White



MINI BASKETWEAVE

# Coasters





MINI BASKETWEAVE, Linen

**Toast worthy.** A layer of moisture-wicking BioFelt® cushions these durable yet refined coasters. Made with recycled fibers, the backing protects the underlying surface. Elegantly banded in sets of four, they are ready for gifting.





## Designed to inspire. Made to last.

Founded in 2000, Chilewich pushes the boundaries of form and function through products that combine innovative textiles and distinctive colors with extraordinary durability and easy maintenance. Our designs can be found in the permanent collection of the Cooper Hewitt, Smithsonian Design Museum, and in homes, workplaces, restaurants, hotels, and vehicles around the world.

# Stay in the loop.

Learn about our latest weaves, design debuts, special events, and more at [chilewich.com](https://chilewich.com), and keep in touch with our textures by following us on Instagram at [@chilewich](https://www.instagram.com/chilewich).

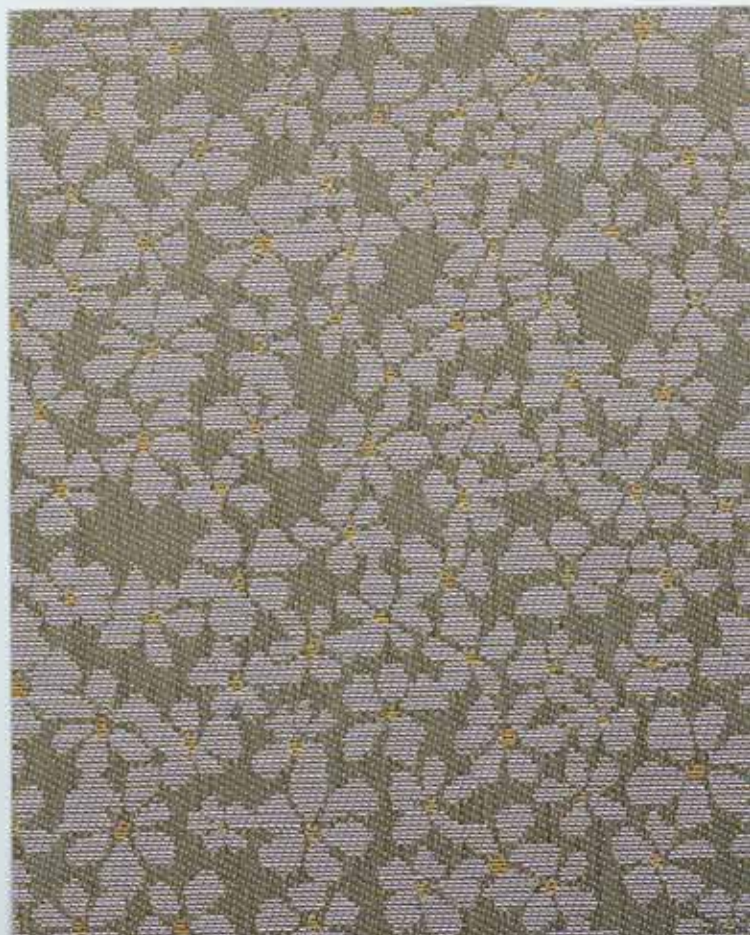
Chilewich  
39 West 19th Street  
New York, NY 10011

T +1 212 679 9204  
F +1 212 679 9205

Chilewich® and TerraStrand®  
are registered trademarks.  
© 2024 Chilewich | Sultan LLC.  
All rights reserved.

[CHILEWICH.COM](https://chilewich.com)

Photography:  
Pippa Drummond, Megan Senior



chilewich®