

AW 2024  
&collection



**AW  
24**

**&k**  
amsterdam



# &contents

lookbook .....	006
meet hal haines .....	036
buro berger .....	044
credits .....	050
contact .....	051

## Dear all,

Welcome to the latest &Klevering catalogue, where creativity meets home decor. For decades, &Klevering has added colour and character to living rooms worldwide. Our home accessories not only complement any interior but add a unique touch that stands out. Founded in 1992, we've remained true to our authentic Amsterdam style, always putting design first.

In this edition, we're excited to unveil our collaboration with Hal Haines, merging his artistic flair with our distinct aesthetic. Our own designers have dedicated countless hours to crafting the latest designs that push the boundaries of creativity and style.

Additionally, explore the newest creations from Buro Berger, curated under the guidance of owners Berdien Righolt and Gerbrand van Nijendaal. Each piece embodies our dedication to craftsmanship and creativity, to elevate your home.

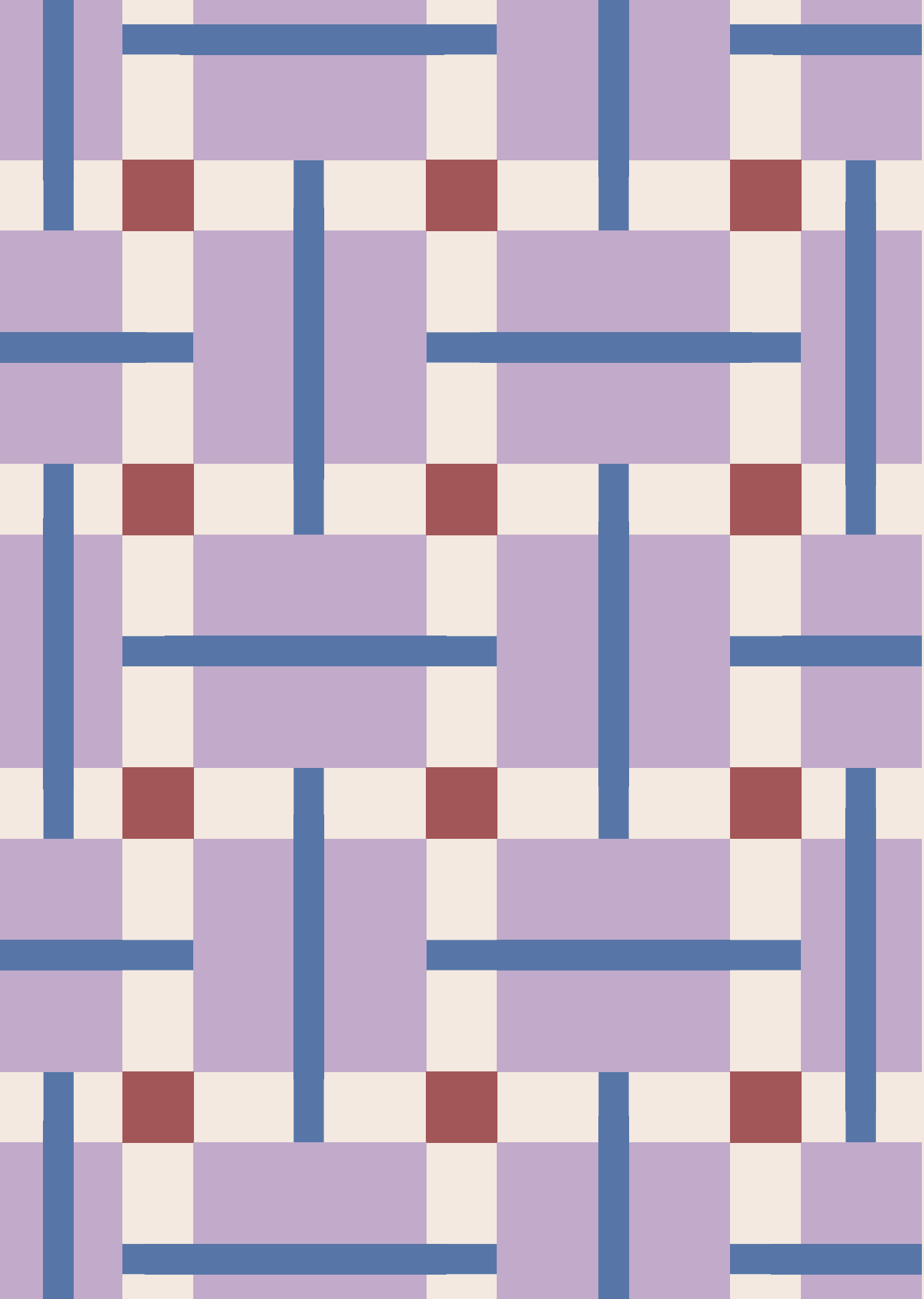
Discover our AW24 collection – a harmonious blend of tradition and innovation designed to transform your living space.

Enjoy the journey!

**Team &k**

---

www.klevering.com · @klevering\_amsterdam



# &lookbook

AW24

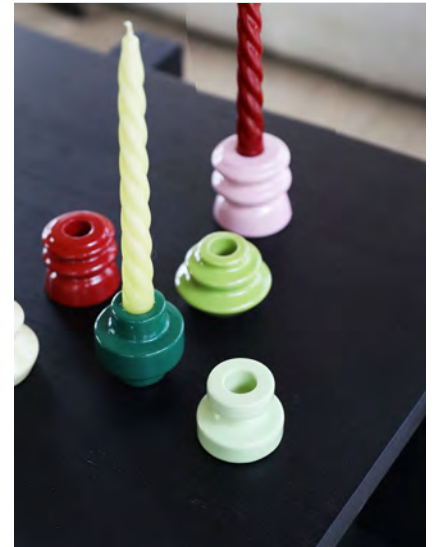
**&k**  
amsterdam

"Our collection effortlessly combines timeless elegance with modern functionality, perfect for adding warmth and style to your living spaces."

LOOKBOOK AW 2024



EK AMSTERDAM











Jar astral lilac  
1518-05



Mirror zigzag burgundy  
1653-13



Candle alpha reds set of 3  
1095-02



Plate goody large  
2797-40



Planter churros burgundy  
3539-05



Photo frame rift lilac  
1661-03





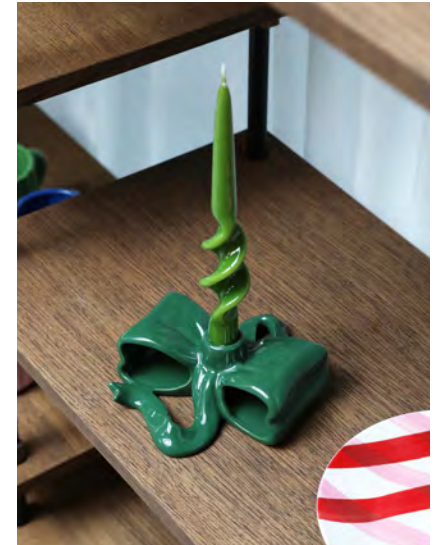








Plate goody medium  
2797-41



Spoon gift set of 2  
2174-11



Ornament gingerbread pink  
1226-61



Butter dish plaid blue  
2839-01



Wonderball birthday cake  
1031-80



Wonderball turkey  
1031-81











LOOKBOOK 2024



EK AMSTERDAM



Candle holder ribbon green  
1520-02



Planter ray green  
2897-06



Mirror zigzag mist  
1653-11



Cushion plano 40x40  
2538-02



Water glass eve green set of 2  
357-03



Vase turban mist  
3548-01





## INTERVIEW

HAL\*  
HAINES | &k  
amsterdam



Meet Hal Haines. Hal, an artist skilled in ceramics and visual storytelling, adds vibrant and expressive designs to his work. His style blends colourful paintings with clean lines and modern materials, creating versatile pieces. We have thoroughly enjoyed this design journey and are immensely proud of what it has become. This collection beautifully combines Hal's artistic touch with &k's commitment to design, resulting in unique and lasting tableware.

**Where does your passion for illustrations and ceramics come from?** Well, it has always been something that comes naturally to me. I am dyslexic and easily distracted so rather than reading and writing I have always preferred pictures; drawing, painting, looking at books with pictures, going to galleries, watching films. I'm a very visual person.

Now that drawing is my job I have to make sure it remains a passion and doesn't become laborious; I work with lots of

different mediums and have lots of different projects going on at once - some for work and some for myself. That keeps me passionate!

**What inspires your work as a ceramist and illustrator?**

Generally I am inspired by the world around me. The floral motifs and representations of nature are references to growing up in the English countryside, and the narratives I depict tend to be queer stories and experiences.

**Are there any specific artists or movements that influence your style?** At the moment I am very inspired by domestic 90s modern design/styling, the likes of Richard Rogers and Terrence Conran, especially the combination of materials and colours. But also forever inspired by 1950s/60s illustrations for children, such as Dick Bruna or puzzles by Galt Toys. I like to play with the overlap between these two styles. These mid-century illustrations are charming and colourful while remaining practical, which I also



find to be true of Richard Rogers and his contemporaries.

**Are there museums you draw inspiration from? If so, which one is your all-time favourite?**

I love big museums with vast collections to explore like the V&A here in London, but I also like small intimate spaces like the American Folk Art Museum in New York where I saw a display of quilts last year.

**Can you describe your work process?** I first look inside my mind for ideas, stories or visuals, then brainstorm on paper, surrounding myself with all sorts of media: books, plant cuttings, antiques, magazines, cds etc. When I am designing I often think about the wider context; what sort of environment I see the pieces in, what colour are the walls and how is the furniture? This enhances my creative process.

**We really love the design of the butter dish. How did you come to this idea?**





When designing the illustrations for the plates and mugs etc there was this theme of an English garden in Autumn. I knew I wanted a butter dish in the series because, in my opinion, a butter dish is the key element of a breakfast table setup. Like most brits, I love buttery toast! Then it just clicked that it should be a little house. A butter dish is a little house, and this one sits in the middle of an autumnal English garden.

**What challenges do you typically face in your work, and how do you overcome them?** Obviously, with ceramics, I have a lot of breakages or unexpected faults - sometimes I think the clay has a mind of its own! But I have overcome that by teaching myself that these things happen and it makes a perfect piece coming out of the kiln even more exciting.

**Can you discuss a specific**

**project or piece that you are particularly proud of and explain the story behind it?** Not long after I launched in 2020, I was commissioned by Paul Smith to create a series of ceramic platters and painted lampshades to sell in their Mayfair shop. The theme for the collection was a modern retelling of traditional fairytales, and the project was a seminal moment in my career. I felt so validated and excited.



**What restaurant is your all-time favourite and would be on your wish list to showcase your tableware?**

Perhaps unsurprisingly, following on from my earlier answer about artists and movements, my favourite restaurant is The River Cafe in Hammersmith, run by Ruthie Rogers. The space was designed by Richard, her husband, and the menu is the most delicious, fresh Italian food.

**What is your favourite activity besides working on your label?** We have an

allotment garden I like to tend to, harvesting mostly strawberries, rhubarb and herbs at the moment. I also love listening to music.





**What triggered you to team up with ãk Amsterdam?**

I was very excited when ãk contacted me. I have not previously collaborated in this way, but I was familiar with Klevering's output, so when this project was pitched to me I knew straight away I wanted to do it.

**What do you think makes the connection between ãk Amsterdam and your own?**

We are both playful I think, in our use of colour, our influences, the way we create. It's been a very organic process 🍏

@halhaines.studio





NEW ADDITIONS

# Buro Berger

Discover the latest from Buro Berger in our exclusive collection update. Our distinct taste, guided by collaboration with young, renowned designers and artists who see projects through from start to finish, defines every piece. This commitment results in contemporary, special, and high-quality products that are designed to last a lifetime. You'll cherish their uniqueness and beauty for years to come—that's the essence of Berger.



## VASE AMPHI

Flower arrangements are always a composition in all dimensions. This glass vase allows you to use different lengths of flowers to create your composition. A small bouquet can go in the lower and middle sections, while a larger bouquet can be distributed over all the rings. By using transparent colours, beautiful overlays appear, and colours start to mix. The water levels can be adjusted playfully to suit the composition and the needs of each ring of flowers. A true colour statement that refers to the steps in amphitheatres, the vase will have a colourful yet subtle presence that looks stunning even without flowers.



LOOKBOOK AW 2024



### About the designer

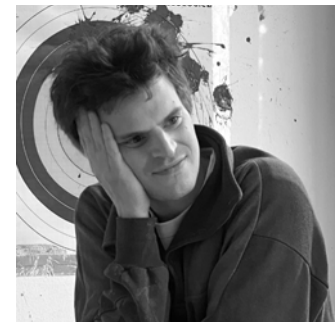
Lex Pott (1985) employs a raw and intuitive method. In his work, he returns to the origin of the materials he uses most: wood, stone and metal. He does not hide his designs under indirect layers, but reduces them to their very essence. Pott works from his design studio based in Rotterdam. He graduated cum laude in 2009 at the Design Academy Eindhoven.

## JUG-A-VASE

Jug-a-vase kicks off with a wild ride inspired by the trusty jerrycan—the unsung hero hauling gasoline and water across the sizzling Australian outback. These quirky containers, with their cool in-and-out shapes, sparked the zany idea behind jug-a-vase. Without a spout, they morphed into ceramic vases with a twist, mixing the best of both worlds in one cheeky, dual-purpose creation.



BURO BERGER



### About the designer

Diego Faivre is a French designer who graduated from the Design Academy Eindhoven in 2018. Currently based in the Netherlands, Faivre's design practice aims to intertwine a dialogue between seriousness, absurdity and poetry. By creating physical reactions, to twist the way we perceive design, he uses an instinctive and colourful approach to reflect on the modern loss of personal identity and the current obsession with time and money as his primary source of inspiration.



## TABLE PLOT

Three carefully shaped parts rest on each other – a very simple yet clever construction, Plot is a very sculptural side table, inspired by the edged and lively architecture of Brutalism, but paired with gentle rounding. These make the technical source of inspiration very organic and natural as well. Let it be called a soft brutalism piece of furniture. Additionally an outstanding structure paint supports this unique balance out of technical and natural appearance, to an extraordinary companion in your home. Made in Poland by linden FSC® wood.



LOOKBOOK AW 2024



### About the designer

Renowned German designer Martin Hirth, born in 1987, is committed to timeless design that seamlessly blends charm, sustainability, and durability. Graduating in 2014 from the University of Art and Design, Offenbach in product design, Hirth, formerly assistant to Sebastian Herkner, established his studio. His award-winning designs grace exhibitions worldwide, from NYC to Tokyo and Karl Lagerfeld's HQ in Amsterdam. Hirth, fascinated by pragmatism and quality, seeks to create designs that are both sustainable and elegantly refined.

## PLATE DAYDREAM

The plate Daydream is inspired by nostalgic plates and paper napkins that Nynke imagines while daydreaming. This contemporary series of six plates uses graphic shapes and silhouettes to create visual illusions that captivate the eye, blending old-fashioned charm with modern design through optical illusion. Made from fine bone china.



BURO BERGER



### About the designer

Nynke Tynagel is a Dutch artist based in Amsterdam. After graduating Nynke became joint owner of Studio Job, ranked as one of the world's most influential players within design and art. After more than 20 years creating Studio Job's signature graphics she now runs her own studio Nynke Tynagel. Nynke's bold expressive and iconographic imagery, both heraldic and pop cartoonish, projects a strong narrative quality.



### credits

#### editorial

Judith Uijtendaal  
Ayfa van Oeteren

#### editing

Judith Uijtendaal

#### photography

Ayfa van Oeteren

#### production

Madelief van Leth

#### special thanks to

Boeketterie Binnenweg  
Sytze van der Zee  
Job van Riemsdijk

#### All rights reserved

No part of this magazine may be reproduced or transmitted in any form or by any means, electronic, mechanical, photocopying, recording, or otherwise, without prior written permission of &k amsterdam.

© 2024 by &k amsterdam

### &k amsterdam

#### Address

Asterweg 15-E  
1031 HL Amsterdam, The Netherlands  
+31 20 463 61 63

#### B2B

sales@klevering.nl  
www.kleveringb2b.com

#### B2C

webshop@klevering.nl  
www.klevering.com

#### Press

press@klevering.nl

#### Instagram

@klevering\_amsterdam

b2b  
website



online  
catalogue



customer  
registration



image  
bank





[klevering.com](http://klevering.com)