



**HOLIDAY COLLECTION  
2023**

Mifuko

**Mifuko**

**HANDMADE PRODUCTS  
THAT EACH CARRY THE  
STORY OF ITS MAKER.**



**Work of hands and hearts**

## DECORATIONS FOR ALL SEASONS

Create a wonderful atmosphere in your shop with our delightful decorations that bring joy to your customers and to the artisans who made them!

Fair Trade and handmade, our decorations make great gifts as well as unique and meaningful additions to your customers' home décor.

Create your own collection for each season from our growing range of decorations that each carry the story of its maker.









**“I TOLD TO MY FATHER  
‘I WANT TO DO THIS.’  
RECALLED KAPYA, WHO  
WAS FORCED TO FLEE THE  
DEMOCRATIC REPUBLIC OF  
THE CONGO AND NOW LIVES  
IN KENYA. “HE FIRST MADE  
SOMETHING, THEN I MADE  
THE SAME, THAT’S HOW HE  
TAUGHT ME.”**

**Kapya Kitungwa**









**Yellow owl**

SKU 2113



**Black owl**

SKU 2111



**Red owl**

SKU 2110



**White owl**

SKU 2112



**Firefinch**

SKU 2105



**Superb starling**

SKU 2107



**Robin chat**

SKU 2106



**Bee eater**

SKU 2115



**Great tit**

SKU 2102



**Coal tit**

SKU 2108



**Bullfinch**

SKU 2101



**Jackdaw**

SKU 2103



**Penguin**

SKU 2114



**White Bunny**

SKU 2104



**Lilac-breasted roller**

SKU 2116

**HANDPAINTED  
WOODEN ORNAMENTS**

Lacquer finish

Jacaranda wood & satin ribbon

Owls, penguin and bunny:

H3 x W6 cm

Others: H4 x W10 cm

Minimum order 10 pcs per SKU

3.90 € (9 € RRP)



### **WOODEN ORNAMENTS**

Jacaranda wood & satin ribbon

H4 x W10 cm

Minimum order 10 pcs per SKU

3.90 € (9 € RRP)



**Natural bird**

SKU 2020



**Dove**

SKU 2021



**Carved bird**

SKU 2022



### WOODEN ORNAMENTS

Jacaranda tree & satin ribbon  
Minimum order 5 pcs per SKU



**Acorn**

SKU 2025  
4.40 € (11 € RRP)



**3 branches ornament set**

SKU 2023S3  
13.50 € (34 € RRP)



**Spruce cone**

SKU 2024  
4.40 € (11 € RRP)



**CERAMIC ORNAMENT**  
Ceramic & satin ribbon  
Minimum order 5 pcs per SKU

**WOODEN ORNAMENT**  
Jacaranda wood & satin ribbon  
Minimum order 5 pcs per SKU



**Star XS**

**Star S**

**Star XS**

**Star S**

SKU S6218  
5.80 € (14.50 € RRP)  
H10.5 x W11 cm

SKU S6318  
10 € (25 € RRP)  
H16.5 x W18 cm

SKU S5210  
5.80 € (14.50 € RRP)  
12 x W11 cm

SKU S5310  
10 € (25 € RRP)  
H18 x W22 cm



**WOODEN CHRISTMAS TREE STAR**

Jacaranda wood & brass

Minimum order 5 pcs per SKU



SKU CS5310

10 € (25 € RRP)

H22 x W22 cm



**WALL SCONCE**

SKU WCA211117  
Brass  
H25 x W15cm

47 € (109 € RRP)

**WALL SCONCE**

SKU WCB211117  
Brass  
H25 x W15cm

47 € (109 € RRP)



## CERAMIC CANDLE HOLDER

Ceramic  
H4.5 x D11 cm

17 € (42.50 € RRP)



**Petrol blue**  
SKU C61116



**Black**  
SKU C6111



**Light blue**  
SKU C6119



**Lilac**  
SKU C61115



**Yellow**  
SKU C6115



**Kandili A**

SKU CA8110  
Soapstone  
H6 x W11 cm

Price 17 €  
(42.50 € RRP)

**Kandili B**

SKU CB8110  
Soapstone  
H15 x W11 cm

Price 23 €  
(57.50 € RRP)

**Kandili C**

SKU CC8110  
Soapstone  
H10 x W12 cm

Price 21 €  
(52.50 € RRP)

**Kandili D**

SKU CD8110  
Soapstone  
H10 x W11 cm

Price 23 €  
(57.50 € RRP)

**Kandili E**

SKU CE8110  
Soapstone  
H8 x 10 cm

Price 21 €  
(52.50 € RRP)

**Designed by Hanna Anonen**



## BASKETS AND BOWLS

Here are some of our classic baskets we recommend for the holiday season.

### XS BASKET

H16 x D15 cm

14 € (35 € RRP)



Black  
SKU 1211



White  
SKU 1218



Brown  
SKU 3210

### S BASKET

H21 x D24 cm

17.50 € (43 € RRP)



Black  
SKU 1311



White  
SKU 1318



Brown  
SKU 3310

### M BASKET

H28 x D30 cm

25.50 € (64 € RRP)



Black  
SKU 1411



White  
SKU 1418



Brown  
SKU 3410

### XS BASKET WITH LID

H18 x D15 cm

17 € (42.50 € RRP)



Brown  
SKU 3210T

### S BASKET WITH LID

H21 x D24 cm

20 € (50 € RRP)



Brown  
SKU 3310T

### XS BOWL

H5 x D18

8.50 € (21 € RRP)



Brown  
SKU B3210

### S BOWL

H6 x D24 cm

11.50 € (28 € RRP)



Brown  
SKU B3310

The black and white baskets are made from upcycled plastic and sisal, the brown baskets from paper.

# WINTER INSPIRATION



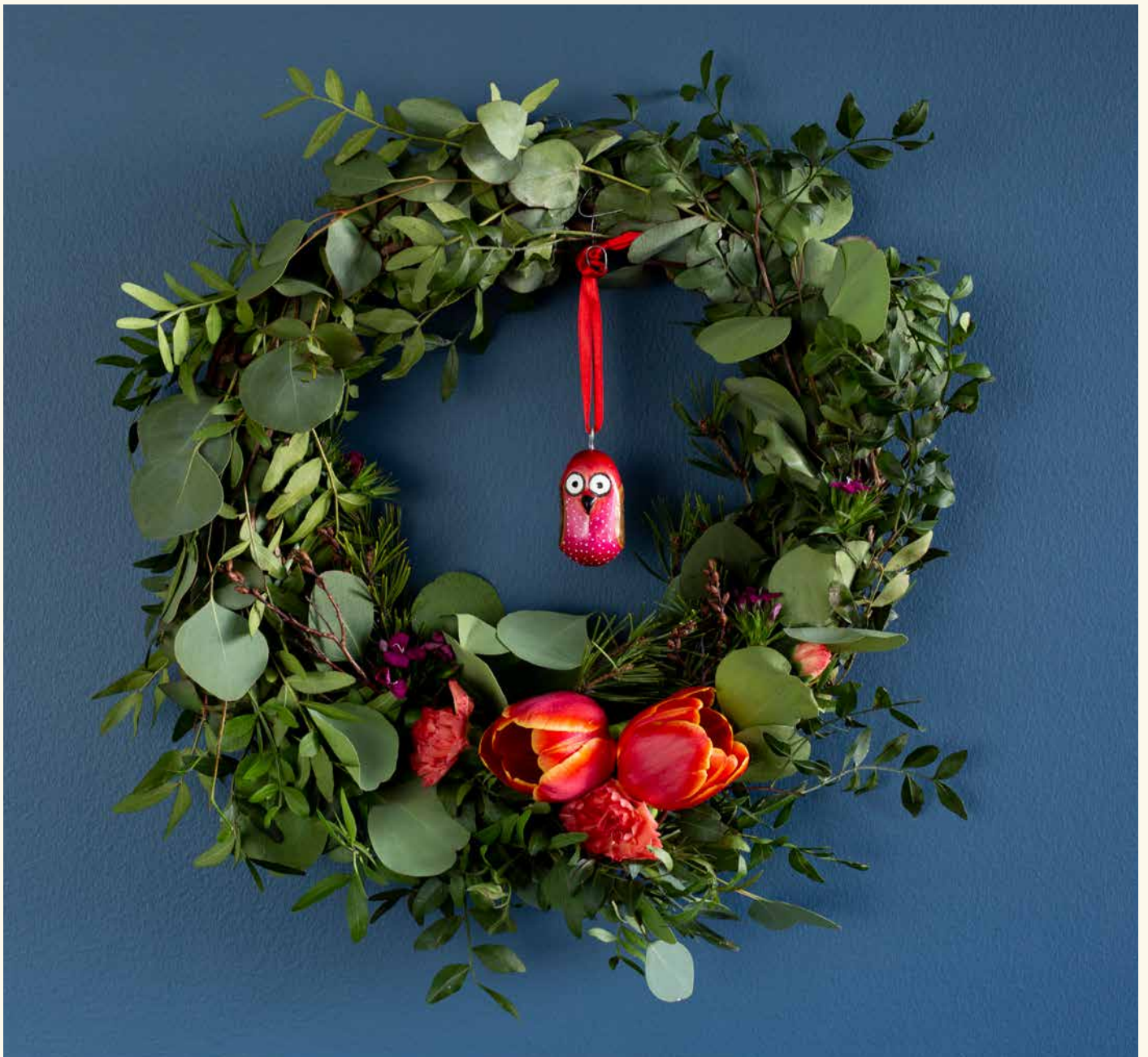




**“I SINCERELY THANK  
MIFUKO FOR IDENTIFYING  
MY TALENT AND  
SUPPORTING IT TO THE  
LEVEL IT IS TODAY. I’M  
NOW ABLE TO FEED  
MY FAMILY AND OFFER  
EMPLOYMENT TO OTHER  
PEOPLE.”**

**Kennedy Ogutu Dianga**







**“CRAFTING IS IN OUR  
BACKBONE. IT MEANS  
EVERYTHING TO US AND IS  
HOW WE EARN OUR LIVING.  
WE ENJOY MAKING QUALITY  
BIRDS AND ARE PROUD OF  
OUR WORK. BIG ORDERS  
ARE IMPORTANT SO WE CAN  
EMPLOY MANY PEOPLE.”**

**Cecilia and Nicodemus Muindi**







# SPRING INSPIRATION







# SUMMER INSPIRATION







# AUTUMN INSPIRATION









**“EVERY DAY, THE ARTISANS  
ARRIVE AT WORK WITH A  
SPARKLE IN THEIR EYES.  
RECEIVING SALARY AT  
THE END OF THE MONTH  
MAKES THEIR EYES  
SPARKLE EVEN MORE. IT  
MAKES ME VERY HAPPY  
TOO.”**

**Francis Ogonga**





# THE MAKERS BEHIND OUR HOLIDAY COLLECTION

## Painted Ornaments

In a small family workshop near Nairobi, Kenya, husband and wife duo Nicodemus and Cecilia, along with their helpers, work diligently to handmade Mifuko's colourful native birds of Finland and Kenya, owls, bunnies and penguins.

Each ornament goes through a meticulous and time consuming process to produce the best result. Freshly fallen branches from jacaranda trees are carefully selected to avoid dry or cracked limbs. While the branches are still soft, they are cut and carved into birds and then dried before sanding.

The delicate wood birds are painted with water-based acrylic colours are mixed and tested before application to get the colouring just right.

Once painted, each bird gets six coats of clear varnish. Each bird is checked for quality at the workshop, then again by Mifuko's team in Kenya, and once more by Mifuko at the warehouse in Finland. The painted ornaments are all designed by Mifuko.

## Wooden ornaments

Through Made51, Mifuko collaborates with Kapya Kitungwa to produce ornamental wooden birds in Nairobi, Kenya. Kapya, a Congolese refugee artisan, employs and trains other refugees living in the area to carve ornaments from fallen branches of the jacaranda tree. Each is carefully finished without chemical treatment, bringing out the natural colour of the wood while ensuring safety in any setting.

All wood ornaments are designed by Mifuko.

## Brass wall sconces

Kennedy Ogutu Dianga, a 47 years old father of nine children, became skilled at brass work by making jewellery. When he met Mifuko's founders in 2022, he started making lampshade mounting rings and wall sconces. At first the wall sconces were made manually, but with the help of Mifuko's subsidiary Punonta, Kennedy was able to purchase a mould and press to make the work more efficient. Now he can offer work to others.

## Ceramics

A workshop specializing in ceramics was founded by self-taught artisan Francis Ogenga in 2010 in Nairobi. Francis trains young, unemployed and often marginalised members of the community. In addition to teaching valuable skills, he provides them good toilet facilities and clean water, essentials that are still rare in many parts of Kenya.

Clay is gathered from a local riverbed to create the ceramic material before being shaped by hand, glazed and fired to give a glossy finish. All ceramic ornaments are designed by Mifuko.

## Soapstone

Mifuko soapstone products are carved by artisans in western Kenya near Lake Victoria, the heart of Kenyan soapstone crafts. Raw soapstone is excavated by hand from pits dug with picks and shovels. Afterwards, the pits are filled in to minimize impact on the landscape. Once carved, the artisans smooth the rough edges of the soapstone candle holders with wet sandpaper. The natural, white cream hue of the soapstone features marbling with shades of pink, brown or yellow. Each hand-carved item has its own unique character, beautiful on its own or when stacked with the same or other models, giving you a wide range of presentation options.

In addition to ensuring artisans are paid according to fair trade principles, the workshop supports the village where the artisans live through projects to improve living conditions for the whole community.

Soap dishes have been designed by Mifuko and the Kandili candle holder series has been designed by award-winning Finnish designer. Hanna Anonen.

# MATERIALS

## Natural wood

The beautifully hand-crafted wooden birds and ornaments are carved from fallen branches of jacaranda trees. Each is carefully finished without chemical treatment, bringing out the natural colour of the wood while ensuring safety in any setting.

## Painted ornaments

Freshly fallen branches from jacaranda trees are carefully selected to avoid dry or cracked limbs. While the branches are still soft, they are cut and carved into birds and then dried before sanding. The delicate wood birds are painted meticulously with water-based acrylic colours. Once painted, each bird gets six coats of clear varnish with time to dry between each application.

## Ceramics

The ceramic material is mixed from clay that the workers gather from a local riverbed. Ornaments and other items are shaped by hand, glazed, and fired to give them a glossy finish.

## Soapstone

Our soapstone products are carved by soapstone artisans in western Kenya near Lake Victoria, the heart of Kenyan soapstone crafts. Quarried from nearby hills, the raw soapstone is excavated by hand from pits dug with picks and shovels. Afterwards, the pits are filled in to minimise the impact on the landscape. Once carved, the artisans smooth the rough edges of the soapstone with wet sandpaper. The natural, white cream hue of the soapstone features marbling with shades of pink, brown or yellow.

## Brass

Brass is a very durable material and is not susceptible to corrosion caused by oxidation. It can tarnish, but this only affects the shine, not its durability or performance.

## Baskets

The baskets shown in this catalogue are made from natural paper and a combination of recycled and upcycled plastic and sisal, described below. Please refer to our seasonal catalogue and made to order program catalogue for our full range of baskets in sizes XS – XXL in a wide selection of materials including 100% sisal, milulu grass, palm leaves, elephant grass, and a blend of upcycled wool and paper.

## Paper

Paper is a beautiful eco-friendly material which can be fully recycled at the end of its lifecycle. The special technique to develop the unbleached paper twine was a cooperative effort between Mifuko and a factory in Kenya, resulting in a fully sustainable, lightweight and highly durable product.

## Recycled and upcycled plastic

Plastic is used due to its durability and predictable quality. These baskets are easy to clean and can take water, making them versatile and very suitable for use outdoors. Additionally, the plastic meets food grade standards, so the products are safe to use when in contact with food. We continuously work towards more sustainable material choices and use recycled plastic whenever possible.

## Sisal

Sisal plants grow in the dry soil of Kenya where no chemical fertilizers are used. A soft and flexible material, sisal is highly durable, anti-static and takes dyeing better than other natural materials so it can be used to create baskets in different colours using natural dyes.

# OUR SUSTAINABILITY PRINCIPLES

## Social impact

**Handmade** All our products are made by hand and carefully designed. We promote the appreciation of traditional craftsmanship and its transmission to future generations.

**Self-help groups** The heart of what we do is with the self-help groups. The artisans in these groups are the most important part of our story. We support and develop the groups' activities together with the group leaders, the chairladies. The chairladies founded the Mifuko women development CBO, which acts as an umbrella for all 40 self-help groups with whom we collaborate.

**Secure work** We make it as easy as possible for artisans to collaborate with us. Artisans belong to self-help groups, which provides an economic and social safety net for the members. We deliver the necessary materials and tools to the groups, and baskets can be woven at home. Basket orders are ongoing, allowing for future planning.

**Fair price** As a WFTO member, Mifuko provides a verifiable fair trade income for artisans. The social, economic and environmental needs of the artisans are factored into our business model. We determine the living wage by using the Living Wage Ladder tool provided by WFTO. In practice, payments for Mifuko orders are agreed upon together with the local community.

**Training** We have developed a three-step training programme for self-help groups to develop economic and social group activities. When a self-help group works well, it empowers all its members.

**Inclusive business model** We provide livelihood opportunities for disadvantaged women living in remote rural areas that are hard to reach, where there are few other sources of income. We work directly with the women's groups, supporting them to become key actors in their communities.

**Supply chain** We work directly with the small-scale suppliers and customers. It's important to us that the supply chain is transparent. We are in touch with each link of the chain, from the maker to the buyer, and communicate stories across the links.

**Long term** We maintain long-term partnerships and we meet all partners regularly. We have been working with the same partners since the beginning and bring new partners on board through training.

## Environmental impact

**Environmentally responsible** We ensure that our suppliers follow environmental best practices. Waste from basketry is very low and we make sure that no litter is left in nature. Most members of self-help groups are also small-scale farmers. Their traditional farming methods protect the local ecosystem. The income generated from cultivation and harvesting remains in the local economy, which benefits the wider community.

**Contribute to climate action** We are committed to actively fighting climate change. We achieve this through two strategies: strengthening people's resilience to climate change and limiting our own environmental impact. Mifuko offsets carbon emissions from the shipping between Kenya and Finland.

## Our products

**Permanent collections** We maintain a permanent collection to ensure that artisans always work with designs and materials they are familiar with.

**Longevity** Our products are designed to last. They are carefully crafted and produced with great attention to quality. Each product is unique and the baskets are also versatile in the way they can be used. The same basket can be used for storage, as a market or shopping bag.

**Quality control** Good product quality is important to us. We work together with the artisans, provide training and meet them regularly to ensure the quality of our products. We are also committed to continuous improvement of our quality processes.

**Local partners** We can only succeed by working in partnership with our local partners. We are continuously training our local partners on process knowhow, enabling us to increase production and improve product quality.



Mifuko webshop [shop.mifuko.com](https://shop.mifuko.com)

Customer service [shop@mifuko.fi](mailto:shop@mifuko.fi)