

Lookbook

Spring/Summer

2022



In living color.

The Spring/Summer 2022 collection reimagines primary colors through subtle shifts of intensity and softened geometries, creating a vibrant palette that is complemented by serene neutrals. Warm, sunlit hues explore the interplay of red and yellow in multi-tonal surfaces made possible by innovative weaving structures and bi-color TerraStrand yarns that feature two colors within a single strand.

All products in the collection are made in the USA.



CLAY, Mini Basketweave





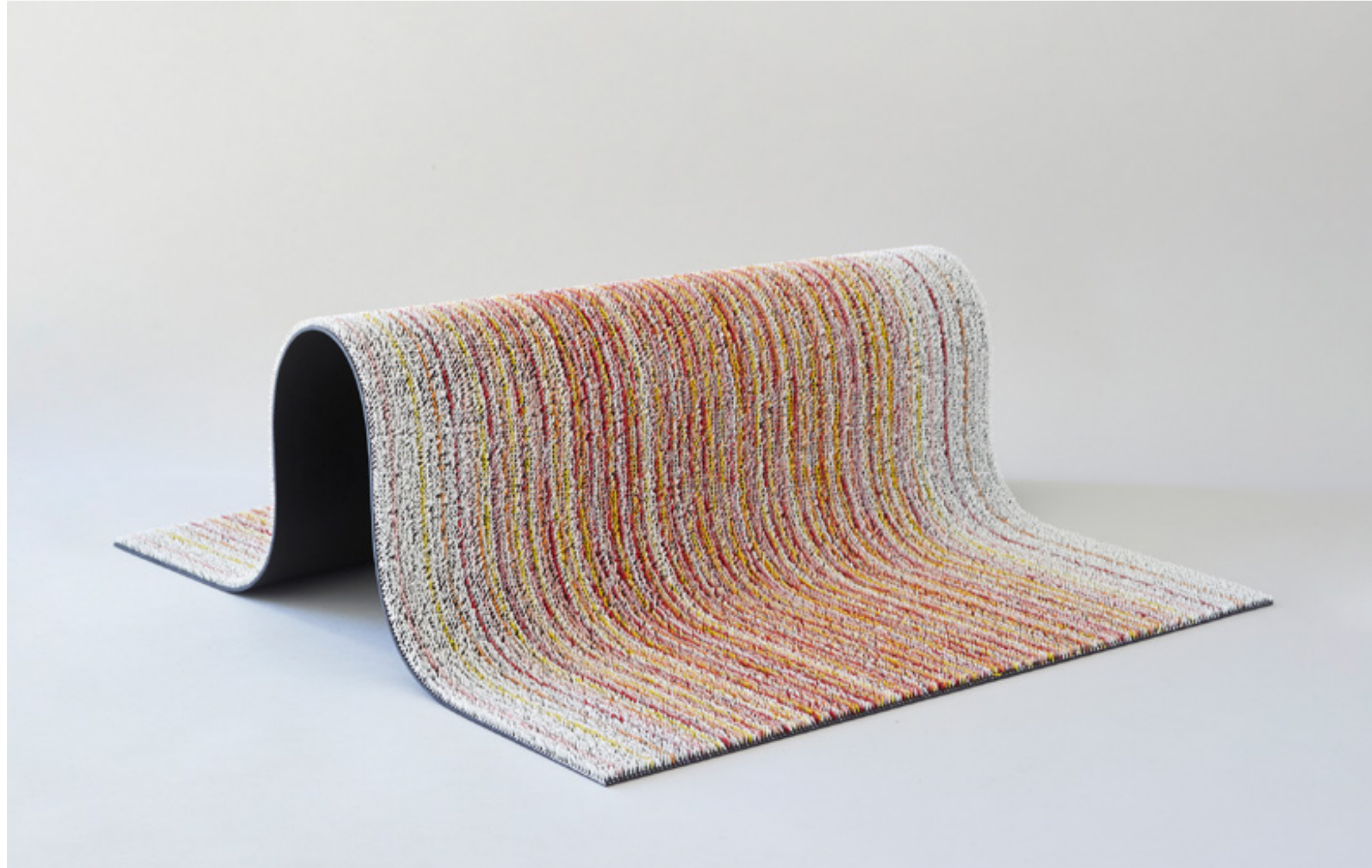
CLAY, Mini Basketweave



SUNRISE, Ombré



SUNRISE, Fade



SUNRISE, Fade



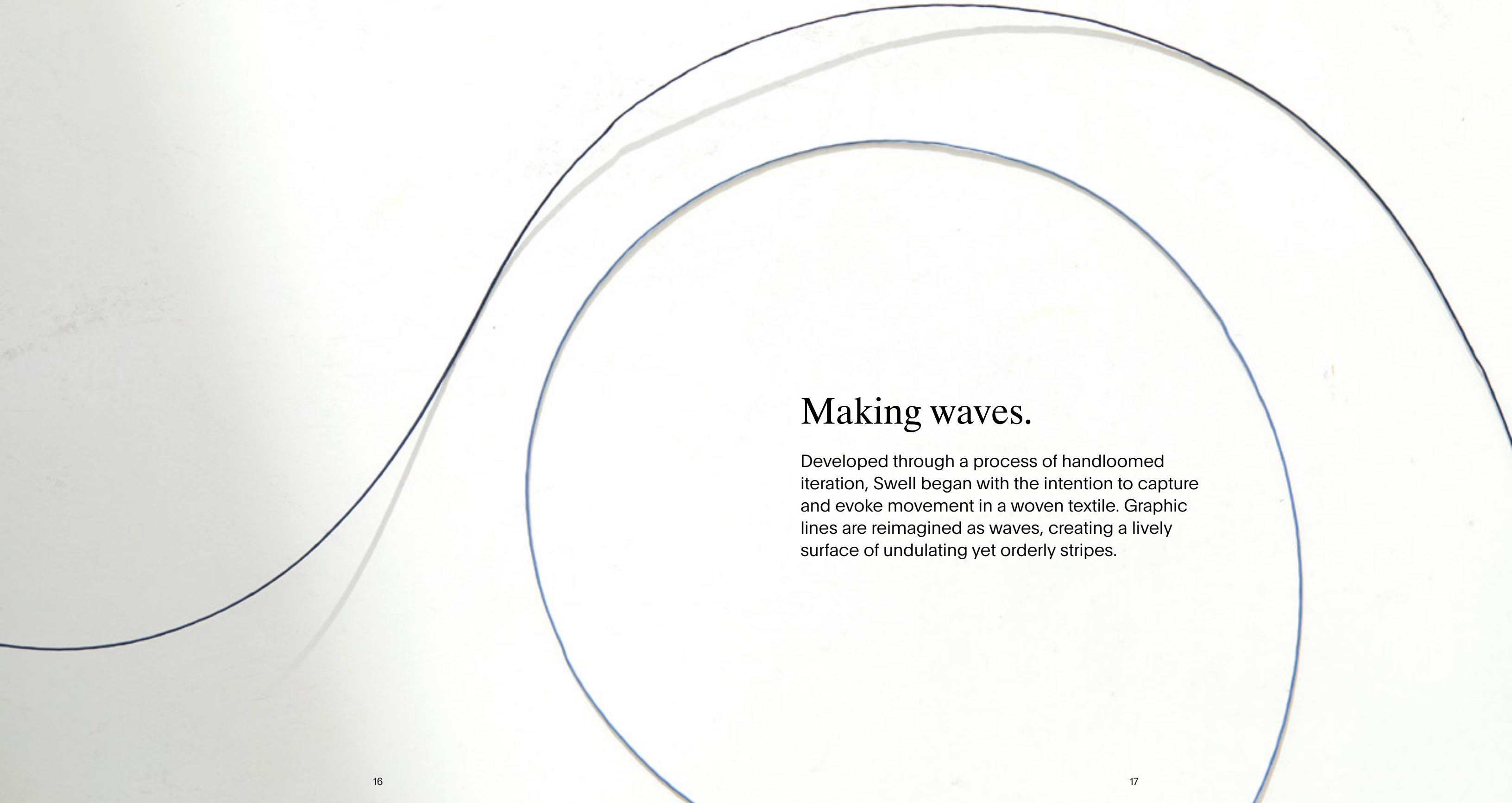
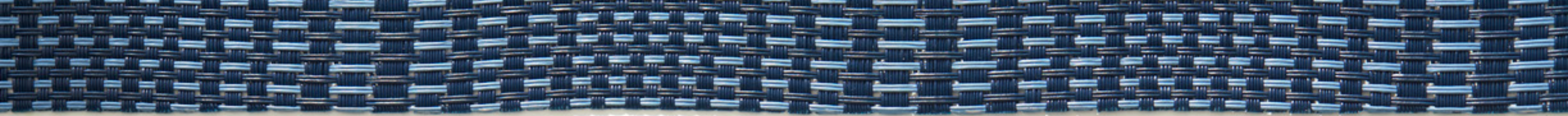
Designed to last.

Longevity is the best form of sustainability, and we are proud to offer products that are not only beautiful but also durable, versatile, and easy to clean. Every Chilewich mat is made to endure decades of daily use and to look good doing it, while conserving the resources required by machine washing and product replacement.



SUNRISE, Flare





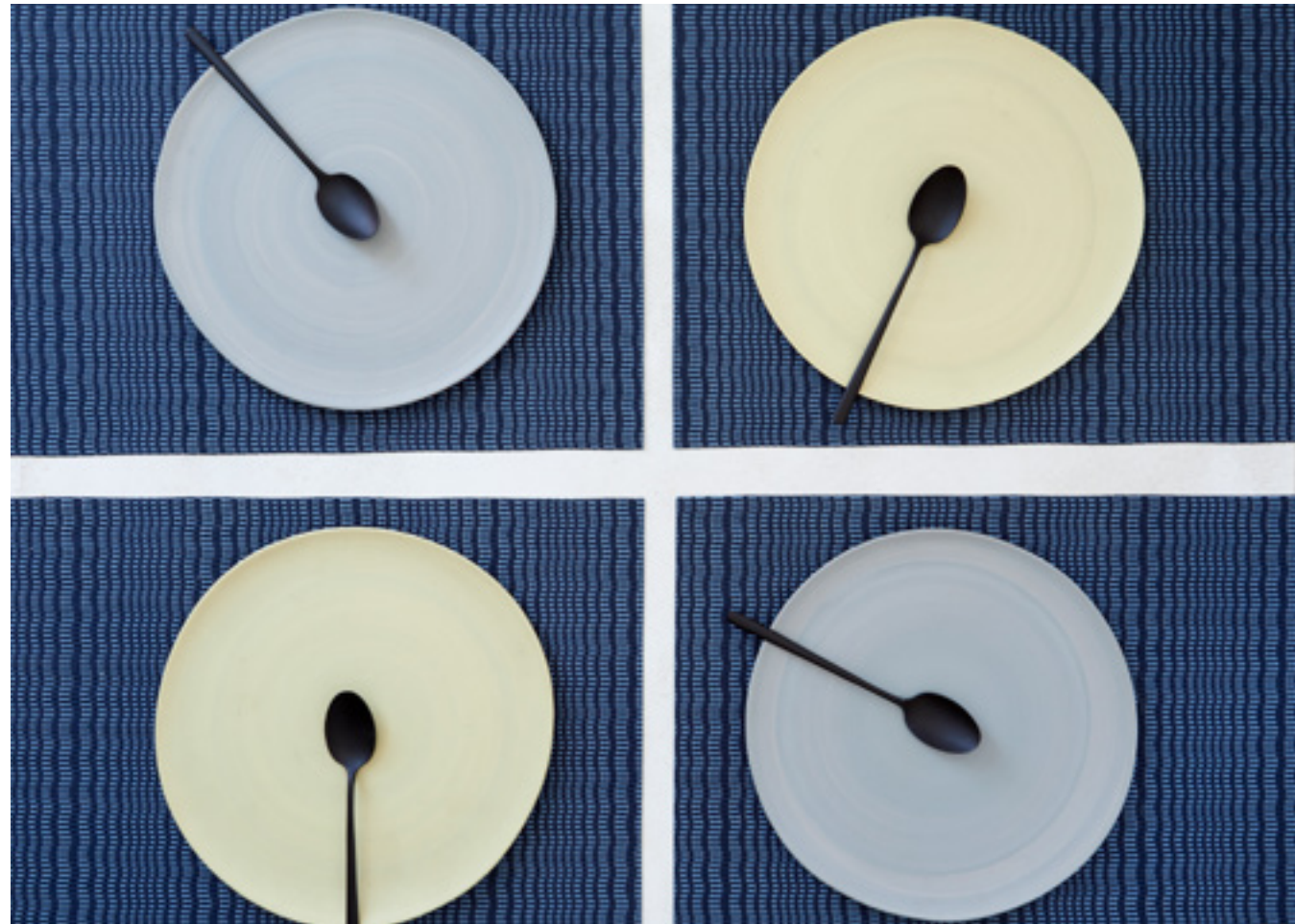
Making waves.

Developed through a process of handloomed iteration, Swell began with the intention to capture and evoke movement in a woven textile. Graphic lines are reimagined as waves, creating a lively surface of undulating yet orderly stripes.

In the Chilewich design studio in New York City, Swell comes to life on the sampling loom under the watchful eye of our master weaver.



STORM, Swell



STORM, Swell



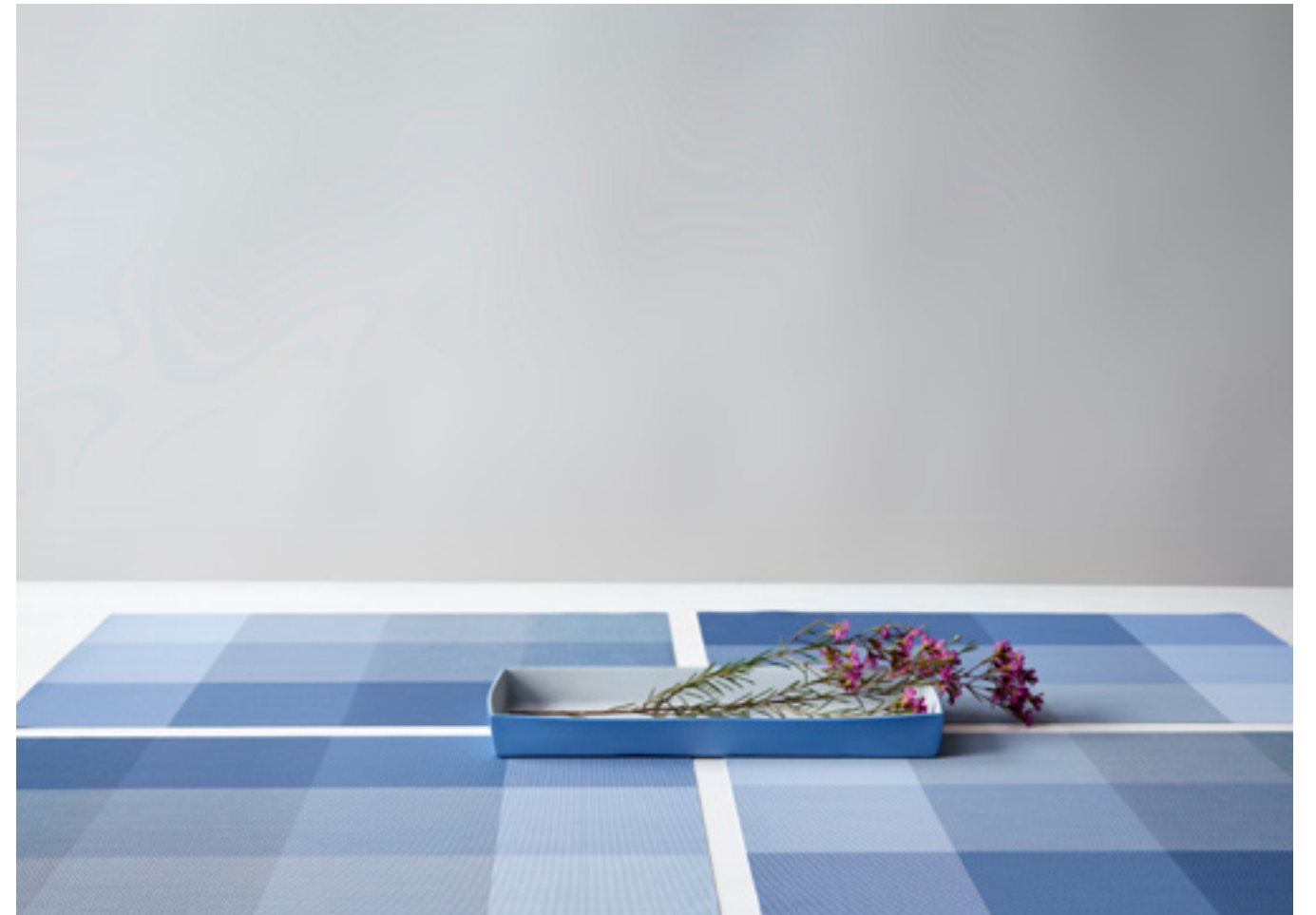
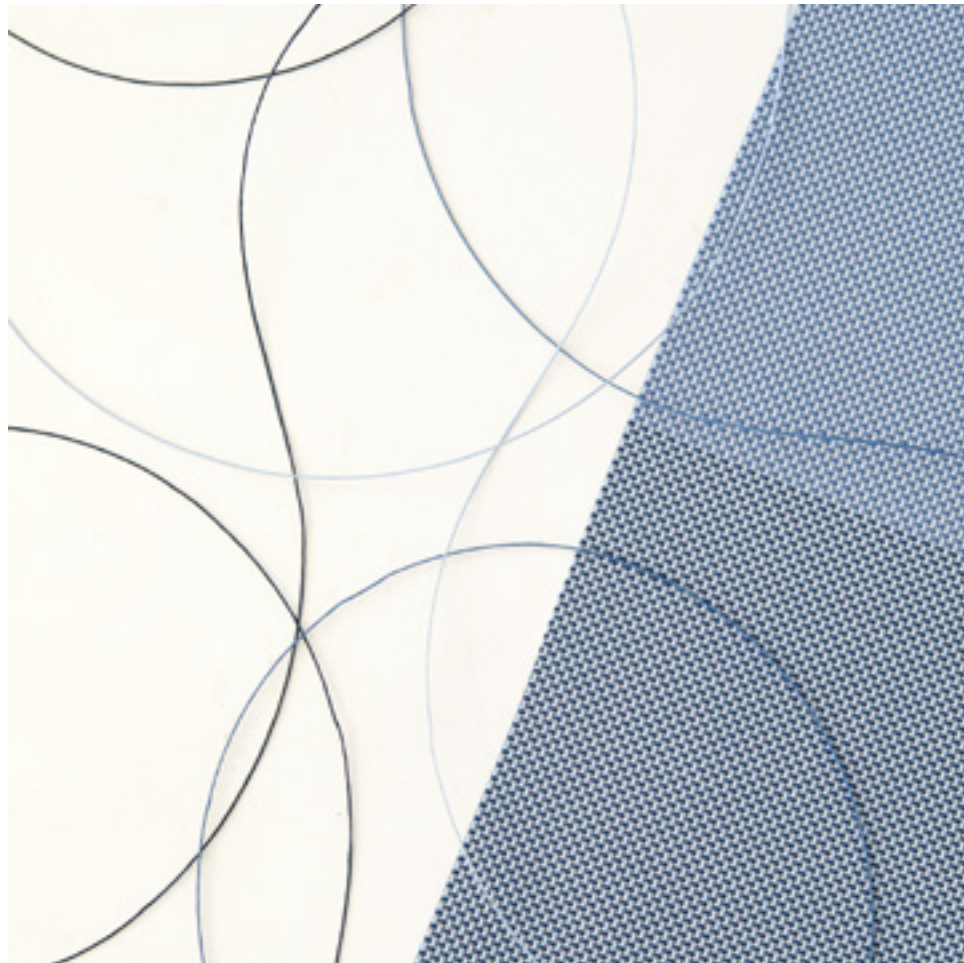
STORM, Swell; Bellhop Lamp: Flos





STORM, Bounce Stripe





SKY, Hue



STONE, Hue



New neutrals.

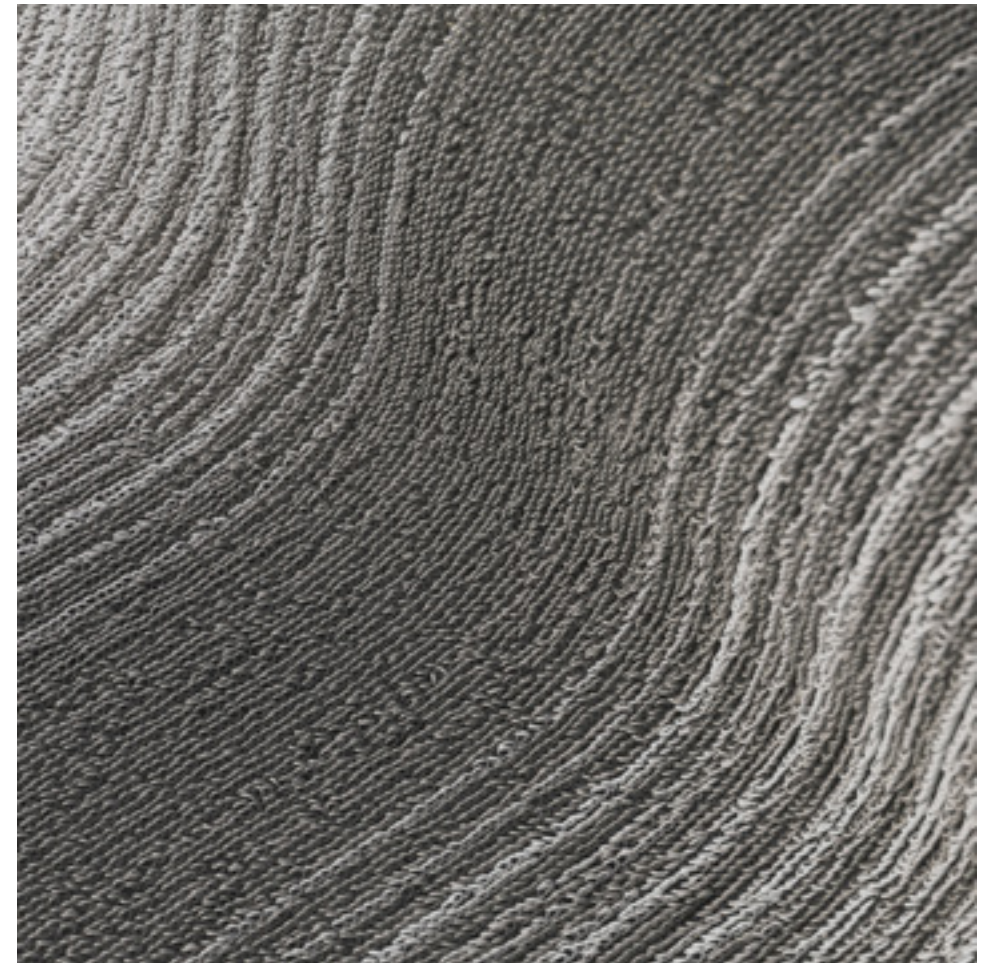
From warm taupes and barely there beiges to cool greys and icy whites, neutrals are at home in any space, and they've long been a Chilewich specialty. The latest additions are inspired by hues found in nature and named accordingly: Stone, Pearl, and Pumice.



STONE, Swell



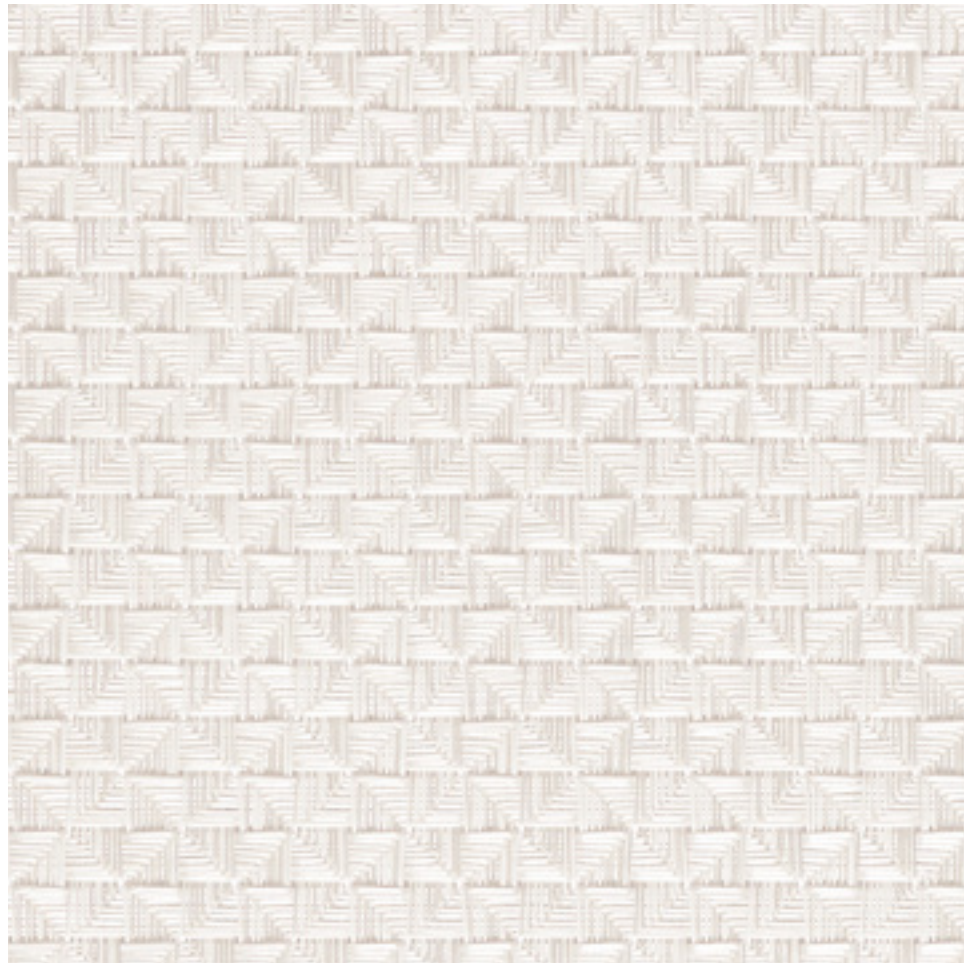
STONE, Swell



STONE, Fade



STONE, Fade; Eos Communal Bench: DWR



PEARL, Origami

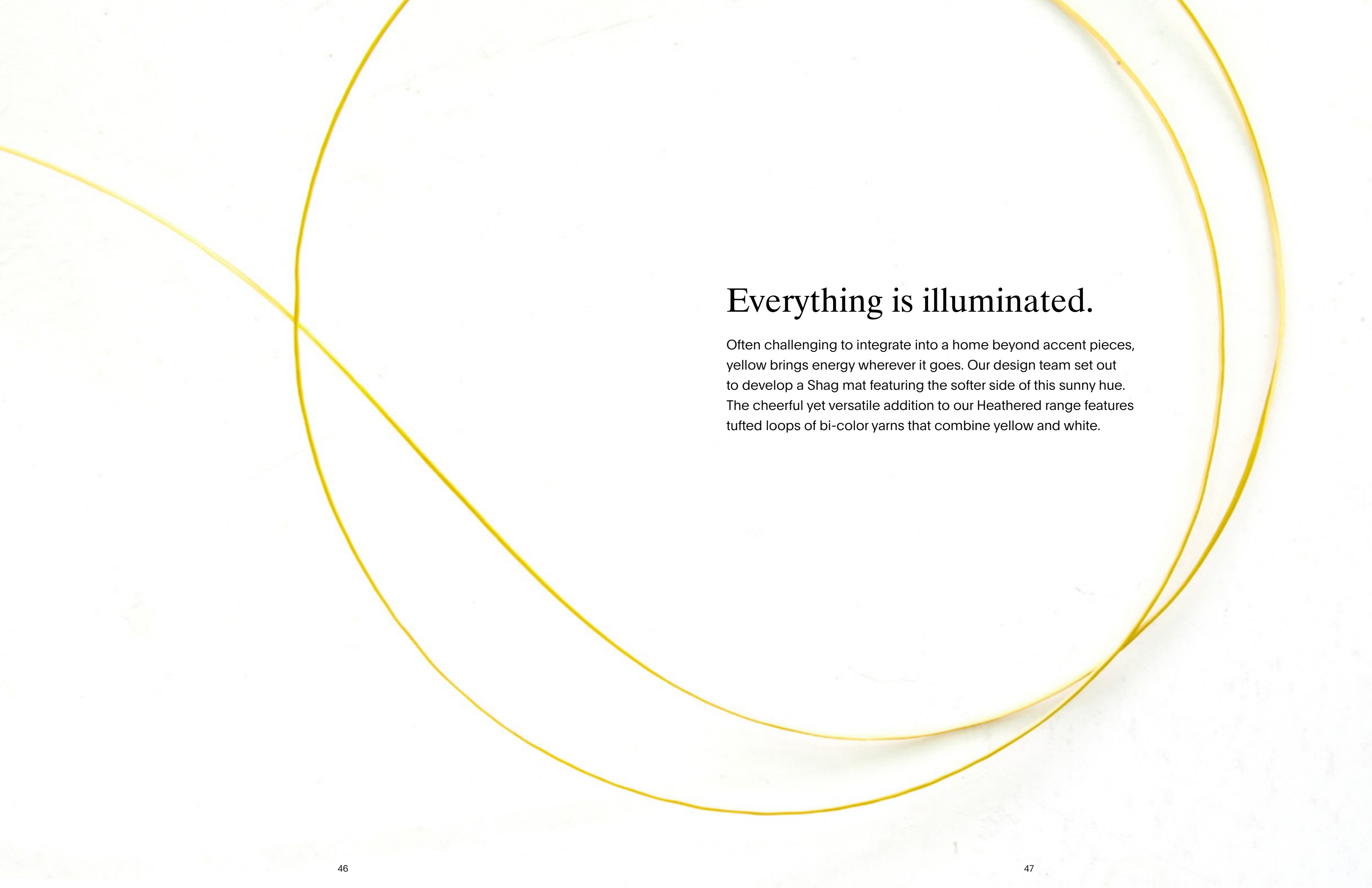




PUMICE, Flare







Everything is illuminated.

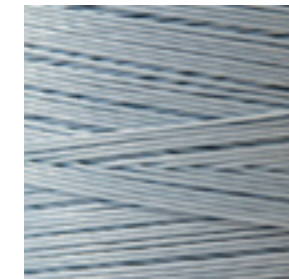
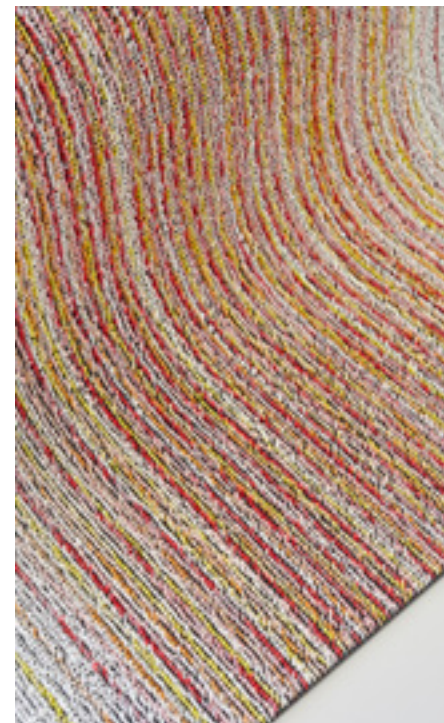
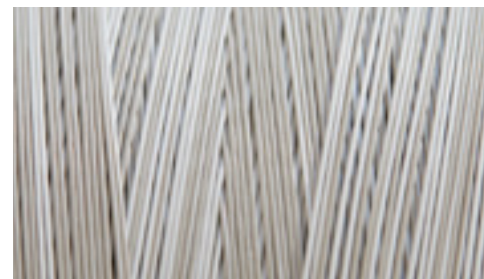
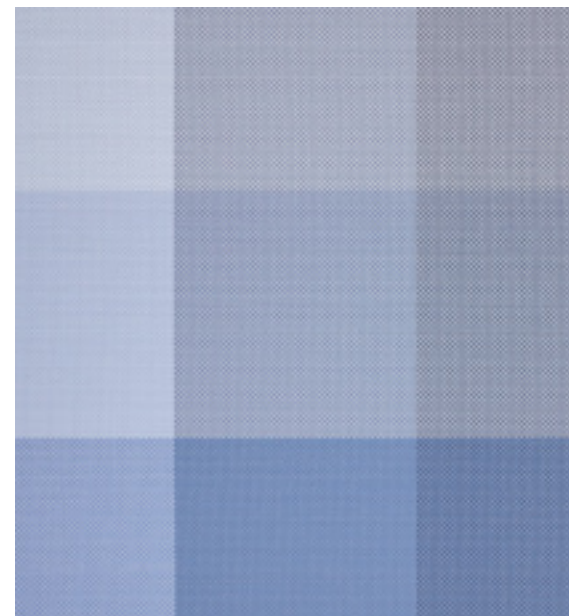
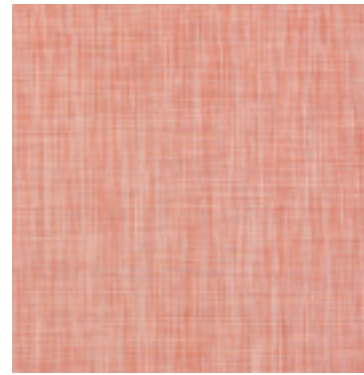
Often challenging to integrate into a home beyond accent pieces, yellow brings energy wherever it goes. Our design team set out to develop a Shag mat featuring the softer side of this sunny hue. The cheerful yet versatile addition to our Heathered range features tufted loops of bi-color yarns that combine yellow and white.



LEMON, Heathered

“Whether on the table or on the floor, the textures, patterns, and colors of our mats become the first layer upon which everything else sits. They set the tone.”

Sandy Chilewich
Founder and Creative Director



Dream team.



Product Designer
Stephen Meyer

Weaving Associate
Stefan Sehringer

Design Director
Kristin Harris

Master Weaver
Alyson Ainsworth

Creative Director
Sandy Chilewich

Bringing depth to surfaces.

Chilewich pushes the boundaries of form and function with products that combine innovative textiles and distinctive colors with extraordinary durability and easy maintenance. Our designs can be found in the permanent collection of the Cooper Hewitt, Smithsonian Design Museum, and in homes, workplaces, restaurants, and hotels around the world.

Design is at the heart of everything we do. Led by founder Sandy Chilewich, our design team includes accomplished weavers who develop two collections each year, building on signature styles with new weaves and colors. Discover the full offering at chilewich.com and by following us on Instagram at [@chilewich](https://www.instagram.com/chilewich).

Chilewich | Sultan LLC
39 West 19th Street
New York, NY 10011

Chilewich® and TerraStrand® are registered trademarks.
All rights reserved.

Photography: Megan Senior

chilewich®