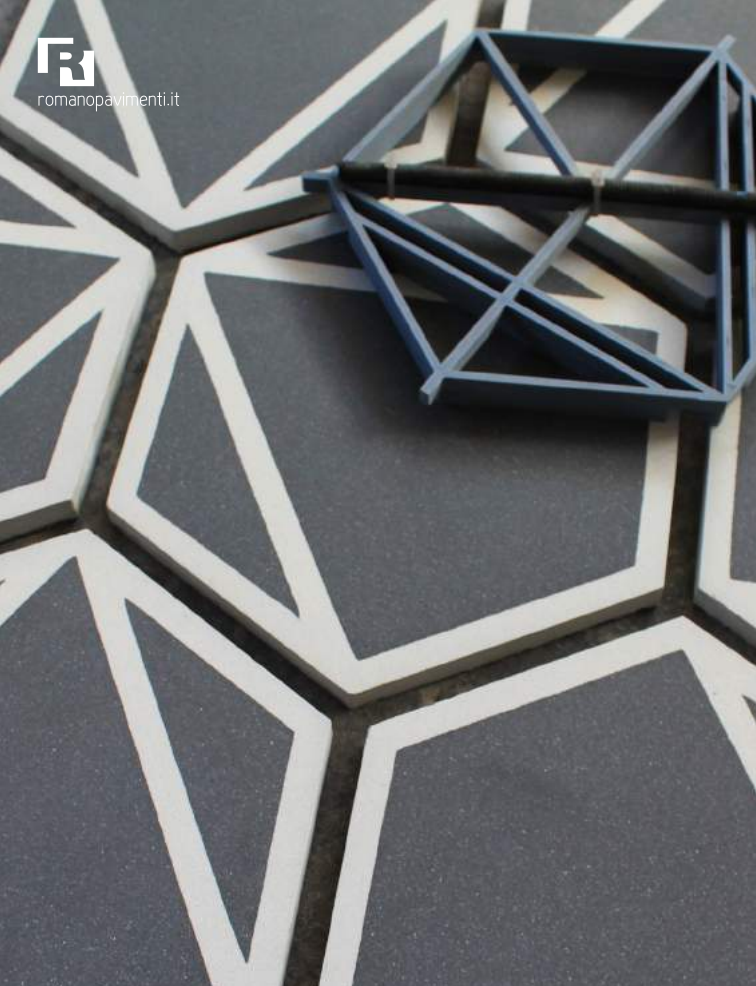




romanopavimenti.it



in **mov**

cement tiles



6X3
Andrea Abbadessa



Collection

inMov is a research on contemporary cement tiles's manufacturing. Starting from a "divisionale", a mould used to separate colors, it is possible to obtain multiple configurations, from a basic pattern, to more complex and dynamic systems. Floor and wall tiles become more than simple decorations, they can transform any space adding the uniqueness of an old craft tradition reinterpreted to a more contemporary mood.

*Partners: ABADIR academy & ADI
Curator: Cecilia Alemagna
Communication: formaliquida*

Designer

Andrea Abbadessa
architect

Project

6X3
Inspired by Escher's lithographs, through linking patterns related to the product's form, they represent geometric two and three-dimensional patterns that change in relation to the colour and the observer's point of view.

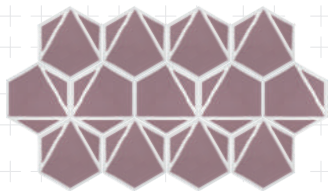
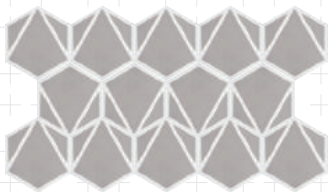
Specifications



1,8 cm - 37,8 Kg/m²
1,4 cm - 29,4 Kg/m²

Smooth
Semipolished

Compositions & Colors



Contatti | Contacts

Zona Industriale, Via Il Strada ang. I Strada
95032 Piano Tavola, Belpasso (CT) | Italia

www.romanopavimenti.it | informazioni@romanopavimenti.it





romanopavimenti.it



in **mov**
cement tiles



INCLUSIONI
TA+ Tringali architetti



Collection

inMov is a research on contemporary cement tiles's manufacturing. Starting from a "divisionale", a mould used to separate colors, it is possible to obtain multiple configurations, from a basic pattern, to more complex and dynamic systems. Floor and wall tiles become more than simple decorations, they can transform any space adding the uniqueness of an old craft tradition reinterpreted to a more contemporary mood.

*Partners: ABADIR academy & ADI
Curator: Cecilia Alemagna
Communication: formaliquida*

Designers

TA+ Tringali architetti
Aldo Tringali
Luca Tringali
architects

Project

Inclusioni

In the same way that nature embeds minerals into rocks, the cement pastes in this new collection capture attractive metals, to create a new design that redefines the concept of "cement tile" through decorative elements no longer linked solely to colour, but also to the combination of different matters.

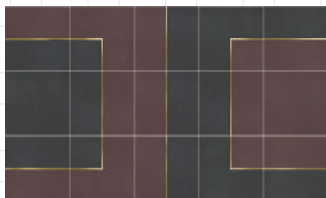
Specifications

20x20
cm

1,8 cm - 37,8 Kg/m²
1,4 cm - 29,4 Kg/m²

Smooth
Semipolished

Compositions & Colors



Contatti | Contacts

Zona Industriale, Via Il Strada ang. I Strada
95032 Piano Tavola, Belpasso (CT) | Italia

www.romanopavimenti.it | informazioni@romanopavimenti.it





romanopavimenti.it



in **mov**
cement tiles



MAGMA
Balla | Calvagna



Collection

inMov is a research on contemporary cement tiles's manufacturing. Starting from a "divisionale", a mould used to separate colors, it is possible to obtain multiple configurations, from a basic pattern, to more complex and dynamic systems. Floor and wall tiles become more than simple decorations, they can transform any space adding the uniqueness of an old craft tradition reinterpreted to a more contemporary mood.

*Partners: ABADIR academy & ADI
Curator: Cecilia Alemagna
Communication: formaliquida*

Designers

André Thomas Balla
architect

Project

Magma
Cement paste hexagonal tiles with lava inert and brass inserts. MAGMA represents the volcanic landscapes of Mount Etna.

Dynamically grouped on the floor, its hexagonal pieces draw fluid lava flows and collisions of matter.

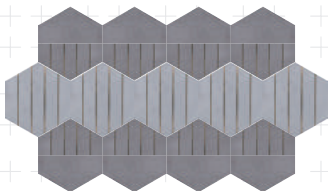
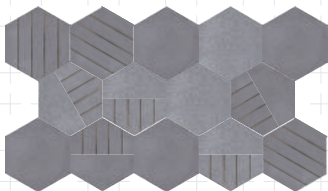
Specifications



1,8 cm - 37,8 Kg/m²
1,4 cm - 29,4 Kg/m²

Smooth
Semipolished

Compositions & Colors



Contatti | Contacts

Zona Industriale, Via Il Strada ang. I Strada
95032 Piano Tavola, Belpasso (CT) | Italia

www.romanopavimenti.it | informazioni@romanopavimenti.it





romanopavimenti.it



in **mov**
cement tiles



MOVE YOUR COLOR
Andrea Branciforti



Collection

inMov is a research on contemporary cement tiles's manufacturing. Starting from a "divisionale", a mould used to separate colors, it is possible to obtain multiple configurations, from a basic pattern, to more complex and dynamic systems. Floor and wall tiles become more than simple decorations, they can transform any space adding the uniqueness of an old craft tradition reinterpreted to a more contemporary mood.

*Partners: ABADIR academy & ADI
Curator: Cecilia Alemagna
Communication: formaliquida*

Designer

Andrea Branciforti
architect

Project

Move Your Color
Modular elements that like a kaleidoscope create multiple visions.

So move you colour!

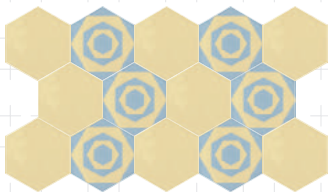
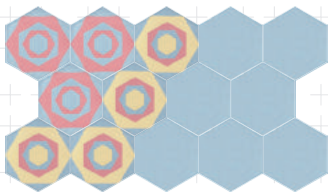
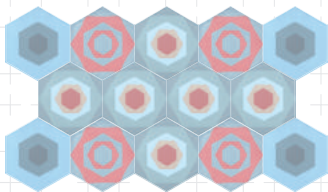
Specifications



1,8 cm - 37,8 Kg/m²
1,4 cm - 29,4 Kg/m²

Smooth
Semipolished

Compositions & Colors



Contatti | Contacts

Zona Industriale, Via Il Strada ang. I Strada
95032 Piano Tavola, Belpasso (CT) | Italia

www.romanopavimenti.it | informazioni@romanopavimenti.it





romanopavimenti.it



in **mov**
cement tiles



ORIGAMI IMPOSSIBILI
Andrea Guardo



Collection

inMov is a research on contemporary cement tiles's manufacturing. Starting from a "divisionale", a mould used to separate colors, it is possible to obtain multiple configurations, from a basic pattern, to more complex and dynamic systems. Floor and wall tiles become more than simple decorations, they can transform any space adding the uniqueness of an old craft tradition reinterpreted to a more contemporary mood.

*Partners: ABADIR academy & ADI
Curator: Cecilia Alemagna
Communication: formaliquida*

Designer

Andrea Guardo
architect

Project

Origami impossibili

From the deconstruction of the 20x20 cm square like a folded piece of paper, these decorations create abstract shapes, incomplete.

They are origami, but impossible.

Specifications

20x20
cm

1,8 cm - 37,8 Kg/m²
1,4 cm - 29,4 Kg/m²

Smooth
Semipolished

Compositions & Colors



Contatti | Contacts

Zona Industriale, Via Il Strada ang. I Strada
95032 Piano Tavola, Belpasso (CT) | Italia

www.romanopavimenti.it | informazioni@romanopavimenti.it





romanopavimenti.it



in **mov**
cement tiles



FINZIONI
Cecilia Alemagna



Collection

inMov is a research on contemporary cement tiles's manufacturing. Starting from a "divisionale", a mould used to separate colors, it is possible to obtain multiple configurations, from a basic pattern, to more complex and dynamic systems. Floor and wall tiles become more than simple decorations, they can transform any space adding the uniqueness of an old craft tradition reinterpreted to a more contemporary mood.

*Partners: ABADIR academy & ADI
Curator: Cecilia Alemagna
Communication: formaliquida*

Designer

Cecilia Alemagna
architect

Project

Finzioni

"The universe (that others call the Library) is composed of an undefined number, possibly infinite, of hexagonal galleries (...). From any hexagon you can see the never-ending upper and lower floors."

Inspired by 'The Library of Babel' by Borges, Finzioni is made up of an order 3 hexagon that offers numerous options for compositions.

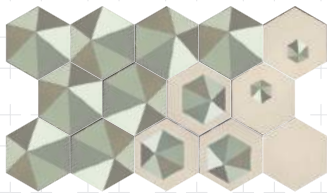
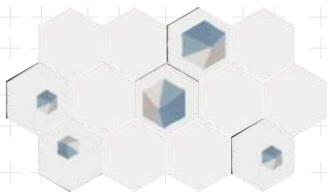
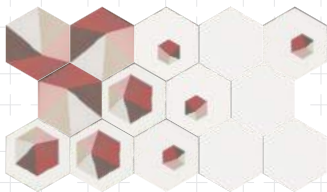
Specifications



1,8 cm - 37,8 Kg/m²
1,4 cm - 29,4 Kg/m²

Smooth
Semipolished

Compositions & Colors



Contatti | Contacts

Zona Industriale, Via Il Strada ang. I Strada
95032 Piano Tavola, Belpasso (CT) | Italia

www.romanopavimenti.it | informazioni@romanopavimenti.it





romanopavimenti.it



in **mov**
cement tiles



PORTLAND
Cecilia Alemagna



Collection

inMov is a research on contemporary cement tiles's manufacturing. Starting from a "divisionale", a mould used to separate colors, it is possible to obtain multiple configurations, from a basic pattern, to more complex and dynamic systems. Floor and wall tiles become more than simple decorations, they can transform any space adding the uniqueness of an old craft tradition reinterpreted to a more contemporary mood.

*Partners: ABADIR academy & ADI
Curator: Cecilia Alemagna
Communication: formaliquida*

Designer

Cecilia Alemagna
architect

Project

Portland

Portland is the most widely known type of cement. Portland is used to produce cement tiles together with marble powders and iron oxides (colourants).

Portland is a game.

Six coloured radii of a hexagon appear and disappear, tracing or interrupting paths and trajectories.

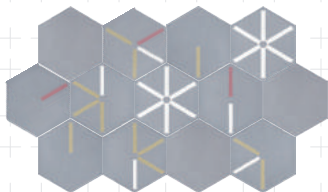
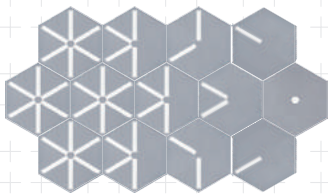
Specifications



1,8 cm - 37,8 Kg/m²
1,4 cm - 29,4 Kg/m²

Smooth
Semipolished

Compositions & Colors



Contatti | Contacts

Zona Industriale, Via Il Strada ang. I Strada
95032 Piano Tavola, Belpasso (CT) | Italia

www.romanopavimenti.it | informazioni@romanopavimenti.it





romanopavimenti.it



in **mov**

cement tiles



INFORMALITY
Moncada Rangel



Collection

inMov is a research on contemporary cement tiles's manufacturing. Starting from a "divisionale", a mould used to separate colors, it is possible to obtain multiple configurations, from a basic pattern, to more complex and dynamic systems. Floor and wall tiles become more than simple decorations, they can transform any space adding the uniqueness of an old craft tradition reinterpreted to a more contemporary mood.

*Partners: ABADIR academy & ADI
Curator: Cecilia Alemagna
Communication: formaliquida*

Designers

Francesco Moncada
Mafalda Rangel
architects

Project

Informality

Informality pays homage to American geometric abstraction evoking forms and patterns from nature.

The series offers six types of models that combined form an irregular and never repeated pattern to create informal landscapes.

Specifications

20x20
cm

1,8 cm - 37,8 Kg/m²
1,4 cm - 29,4 Kg/m²

Smooth
Semipolished

Compositions & Colors



Contatti | Contacts

Zona Industriale, Via Il Strada ang. I Strada
95032 Piano Tavola, Belpasso (CT) | Italia

www.romanopavimenti.it | informazioni@romanopavimenti.it





romanopavimenti.it



in **mov**
cement tiles



RIGA 9.8
Gaetano Parisi



Collection

inMov is a research on contemporary cement tiles's manufacturing. Starting from a "divisionale", a mould used to separate colors, it is possible to obtain multiple configurations, from a basic pattern, to more complex and dynamic systems. Floor and wall tiles become more than simple decorations, they can transform any space adding the uniqueness of an old craft tradition reinterpreted to a more contemporary mood.

*Partners: ABADIR academy & ADI
Curator: Cecilia Alemagna
Communication: formaliquida*

Designer

*Gaetano Parisi
interior designer*

Project

Riga 9.8

"The basic idea was quickly conceived. One, two lines draw a diagram, divide a space, beyond decoration.

They mark the floor or wall by organizing tiles of different colours and sheen... .

The four models arrange and disarrange, giving rise to novel solutions... ."

Specifications

20x20
cm

1,8 cm - 37,8 Kg/m²
1,4 cm - 29,4 Kg/m²

Smooth
Semipolished

Compositions & Colors



Contatti | Contacts

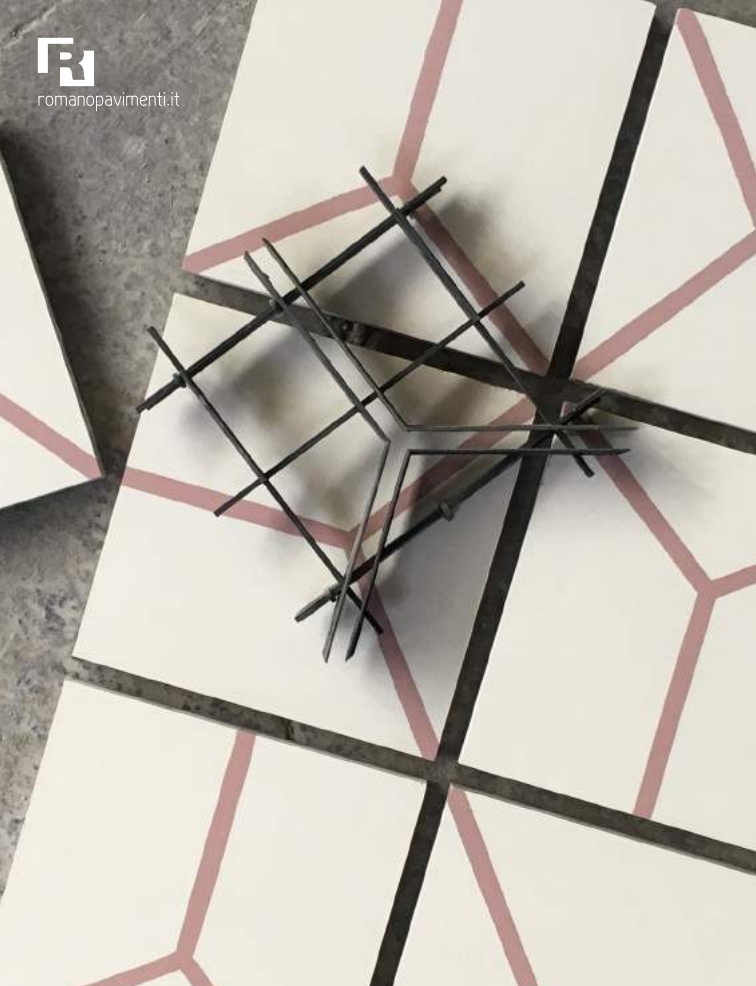
Zona Industriale, Via Il Strada ang. I Strada
95032 Piano Tavola, Belpasso (CT) | Italia

www.romanopavimenti.it | informazioni@romanopavimenti.it





romanopavimenti.it



in **mov**
cement tiles

YEP
Gianmarco Rapisarda



Collection

inMov is a research on contemporary cement tiles's manufacturing. Starting from a "divisionale", a mould used to separate colors, it is possible to obtain multiple configurations, from a basic pattern, to more complex and dynamic systems. Floor and wall tiles become more than simple decorations, they can transform any space adding the uniqueness of an old craft tradition reinterpreted to a more contemporary mood.

*Partners: ABADIR academy & ADI
Curator: Cecilia Alemagna
Communication: formaliquida*

Designer

Gianmarco Rapisarda
architect

Project

YEP
Yep took form from the interest in design at the Romano Pavimenti manufacturer.

The idea, from an intuitive vision, aimed to combine simplicity and a clean design with traditional materials, combined to offer a range of geometries and combinations in a multi-coloured palette.

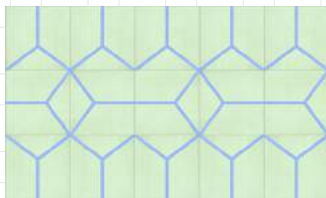
Specifications

20x20
cm

1,8 cm - 37,8 Kg/m²
1,4 cm - 29,4 Kg/m²

Smooth
Semipolished

Compositions & Colors



Contatti | Contacts

Zona Industriale, Via Il Strada ang. I Strada
95032 Piano Tavola, Belpasso (CT) | Italia
www.romanopavimenti.it | informazioni@romanopavimenti.it





romanopavimenti.it



in **mov**
cement tiles



TARTAN
Luca Maci



Collection

inMov is a research on contemporary cement tiles's manufacturing. Starting from a "divisionale", a mould used to separate colors, it is possible to obtain multiple configurations, from a basic pattern, to more complex and dynamic systems. Floor and wall tiles become more than simple decorations, they can transform any space adding the uniqueness of an old craft tradition reinterpreted to a more contemporary mood.

*Partners: ABADIR academy & ADI
Curator: Cecilia Alemagna
Communication: formaliquida*

Designer

*Luca Maci
architect*

Project

*Tartan
An eccentric grid from the intersection of two arithmetic sequences on orthogonal axes.*

A flexible design with multiple combinations.

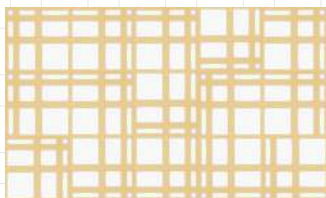
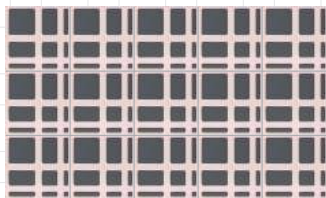
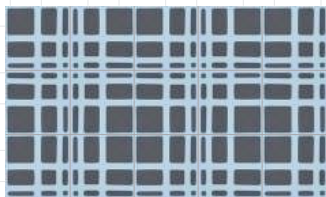
Specifications

20x20
cm

1,8 cm - 37,8 Kg/m²
1,4 cm - 29,4 Kg/m²

Smooth
Semipolished

Compositions & Colors



Contatti | Contacts

Zona Industriale, Via Il Strada ang. I Strada
95032 Piano Tavola, Belpasso (CT) | Italia
www.romanopavimenti.it | informazioni@romanopavimenti.it





romanopavimenti.it



in **mov**
cement tiles



DADO
studio GUM



Collection

inMov is a research on contemporary cement tiles's manufacturing. Starting from a "divisionale", a mould used to separate colors, it is possible to obtain multiple configurations, from a basic pattern, to more complex and dynamic systems. Floor and wall tiles become more than simple decorations, they can transform any space adding the uniqueness of an old craft tradition reinterpreted to a more contemporary mood.

*Partners: ABADIR academy & ADI
Curator: Cecilia Alemagna
Communication: formaliquida*

Designers

*studio GUM
Valentina Giampiccolo
Giuseppe Minaldi
architects*

Project

*Dado
Inspired by the game and a playful approach to design. Suitable both for geometric and ordered compositions and for random and fragmentary ones. The layout and direction of the dots can create multiple scenarios.*

Different colour schemes can add extra twists to the story.

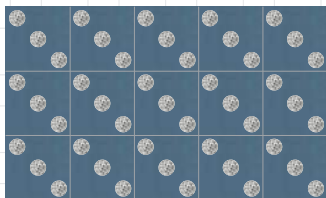
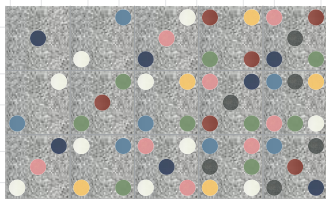
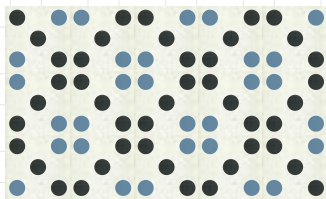
Specifications

20x20
cm

1,8 cm - 37,8 Kg/m²
1,4 cm - 29,4 Kg/m²

Smooth
Semipolished

Compositions & Colors



Contatti | Contacts

Zona Industriale, Via Il Strada ang. I Strada
95032 Piano Tavola, Belpasso (CT) | Italia

www.romanopavimenti.it | informazioni@romanopavimenti.it





romanopavimenti.it



in **mov**
cement tiles



CIRCUITO
Vincenzo Cancemi



Collection

inMov is a research on contemporary cement tiles's manufacturing. Starting from a "divisionale", a mould used to separate colors, it is possible to obtain multiple configurations, from a basic pattern, to more complex and dynamic systems. Floor and wall tiles become more than simple decorations, they can transform any space adding the uniqueness of an old craft tradition reinterpreted to a more contemporary mood.

*Partners: ABADIR academy & ADI
Curator: Cecilia Alemagna
Communication: formaliquida*

Designer

Vincenzo Cancemi
visual & product designer

Project

Circuito

Printed circuits represent the steps on a path in a living space through which one moves daily to the "stages" that have an assigned purpose in public and private spaces.

Circuito allows the creation of organically modern or classically schematic textures.

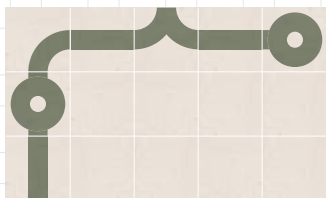
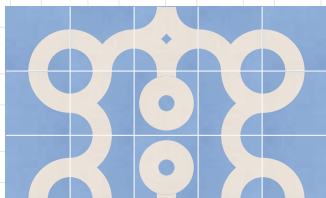
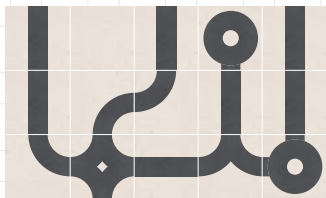
Specifications

20x20
cm

1,8 cm - 37,8 Kg/m²
1,4 cm - 29,4 Kg/m²

Smooth
Semipolished

Compositions & Colors



Contatti | Contacts

Zona Industriale, Via Il Strada ang. I Strada
95032 Piano Tavola, Belpasso (CT) | Italia

www.romanopavimenti.it | informazioni@romanopavimenti.it

