

lune  
design

Reduced catalog 2021

rev. 07



Furniture Production  
high quality'



pag. | 04



pag. | 15



pag. | 21



pag. | 07



pag. | 19



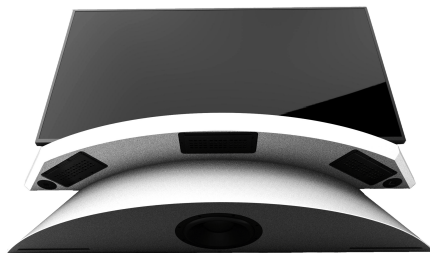
pag. | 22



pag. | 13



pag. | 09



pag. | 23



pag. | 18

Lune Design is the brand with which Arco Arredo markets the products. Arco Arredo is a company selected and certified by DuPont™ Corian® is part of the Quality Network Industrial Partner circuit with license n. 1195

“Our production characteristic is centered on the skilful alternation of numerical control processes and ancient craftsmanship in carpentry. Our auto production seeks the highest quality in both design and production. Our artisan production continues in the tradition. Ancient and rare carpentry techniques are handed down from father to son. These techniques are the basis for a new and modern approach to quality craftsmanship both with traditional and more innovative materials.

We use only the best materials giving priority to respecting the environment. Our carpenters, master cabinetmakers for several generations, have the opportunity to express all their experience. Personally, in addition to carrying out all the entrepreneurial phases, I participate directly in the production. This is because it gives me joy in creating things made with love. . . and above all with their own hands”(Ezio Colombrino)

The objects are modeled in 3D with software such as Catia, SpaceClaim, 3Dstudio and other programs that verify their functionality as well as crash tests and more. We personally build the molds for objects to be made in thermo-folding using materials such as Corian® or other composite materials. The files are transformed into machine language and then the cuts of the parts are made with state-of-the-art 5-axis CNC machines; for wood, Corian® and metal.

### CHI SIAMO



*Ezio Colombrino*

Ezio Colombrino, Naples- 1959. Graduated in architecture at the Milan Polytechnic (address in Industrial Design), he studied with Enzo Mari and Achille Castiglioni. For years he has participated in art and design exhibitions around the world; many curated by Alessandro Mendini. Founder of [Arco Arredo](#) and [Lune Design](#), alternates manual artistic experimentation with rigorous design and production phases. Since 2017 he has been in the operations team of [Commission Handmade in Italy- ADI \(Association for Industrial Design\)](#) – Golden Compass). Invited several times to lectures at the Federico II State University of Architecture and Design in Aversa.



*Franco Trivelli*

Franco Trivelli, Naples- 1963. Carpenter for several generations. He starts working in his father's shop as a child. . We have been working together for over 15 years and when we go to buy wood to make our products, I am struck by the fact that he feels the wood under the touch of his hand, smells it ... and with ancient wisdom, he manages to choose the right one. !!. Wood is his whole world



[www.lunedesign.it](http://www.lunedesign.it)



*Corian® objects made of thermo-folding*



*Corian® objects cut with 5 Axis CNC*



*Aluminum shelf processing - il Lattomiere*



*Reception for Kiton - Corian® coated steel beams*



[See Video](#)



CORIAN® DESIGN

### Description

The "Tzeno" shelf furnishes the wall with harmony. The shapes are inspired by "Stealth" aircraft with a strong and modern design. The tapered profile creates a pleasant dynamic effect.

Your guests will be impressed by seeing such an exclusive item !!. Shelves suitable for furnishing even large walls. They are made in various finishes. Designed to be used individually or in combination with each other: as an entrance console, with a mirror, a painting, they are able to complete the large spaces occupied by large wall-mounted TVs ... in short, they have many possibilities of use. With just a few elements, spaces can be given a simple, elegant and very exclusive style

### The mounting system

The box-like and tapered shape hides an extremely simple and immediate assembly system.

### Materials and variants

The shelves are made of smooth matt white painted aluminum. Other RAL colors possible on request. Also on request in matt white Corian®, or in solid blockboard with the following wood essences:

For the following finishes on order delivery about 25 days and minimum 2 pieces:

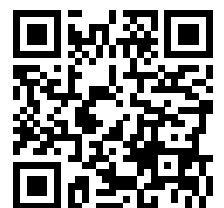
- Indian Rosewood Wood (Birch plywood with ALPI veneer)
- Ammara Ebony Wood (Birch plywood with ALPI veneer)
- Zebrano wood (Birch plywood with ALPI veneer)
- Light Oak Wood (Birch plywood with ALPI veneer)
- Decapé Oak wood (Birch plywood with ALPI veneer)
- Canaletto walnut wood (Birch plywood with ALPI veneer)
- Gray Oak wood1 (Birch plywood with ALPI veneer)

### DIMENSIONS:

**Length 160 cm**  
Depth 30 cm  
Max height 19 cm

**Length 130 cm**  
Depth 30 cm  
Max height 19 cm

**Length 110 cm**  
Depth 30 cm  
Max height 19 cm



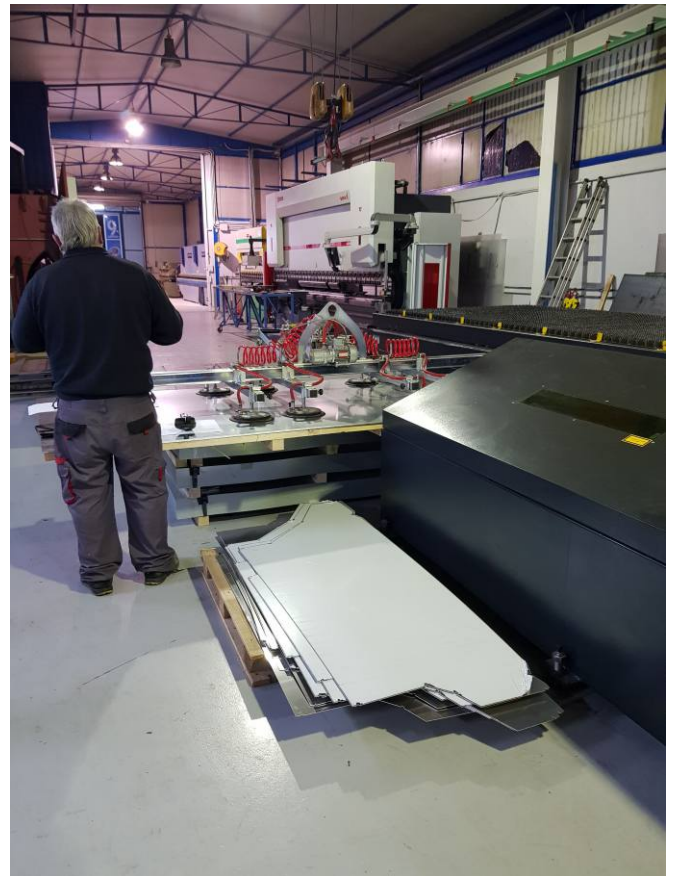
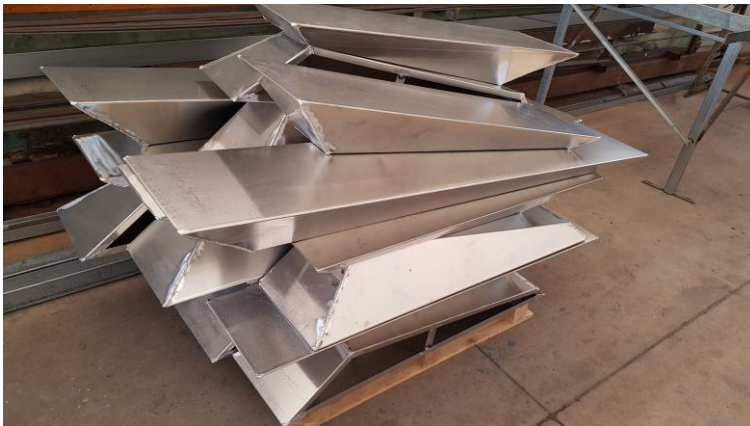
product sheet  
click here

[For any finishing / color customizations, send the request to](#)

[info@lunedesign.it](mailto:info@lunedesign.it)







CNC laser bending and cutting- Cute Lite Penta 8000 watt plus tube





### Description

Umbrella stand designed to accommodate a large amount of umbrellas of all sizes and to impeccably collect all possible water dripping from the umbrellas, avoiding wetting the floor in any way.

Design: arch. Ezio Colombrino.

The metal rings, in their shape and size, are designed to give stability when you have to accommodate a large number of umbrellas.

The smaller folding umbrellas can be placed directly in the cube so that they can be easily picked up even when the umbrella stand is full.

The rings that make up the central part are in brushed stainless steel and give a truly original look to the object.

The umbrella stand is made of water-repellent materials ideal for being in contact with water.

Inside, on the bottom, an elegant red support of 'pyramid-shaped' ashlar polyurethane foam, fixes the possible movement of the umbrella, at the same time, it allows to easily eliminate the accumulation of water.

This interesting element stops the tips of the umbrellas and makes sure that they can be inserted freely in every part and not necessarily in the metal circles. The latter are only needed in an umbrella overcrowding, in public offices or waiting rooms.

All formalisms have been excluded: every form of every single part arises from a precise logic linked to the function and materials used and their processing.

more holding, in a stable way, over 30 umbrellas allowing the easy finding of the little umbrella!.

### Materials

Base and container:

DuPont™ Corian® in white or red

(on a minimum order of 8 pieces,

you can choose one of about 100

DuPont™ Corian® colors).

Alternative version in plastic material

*Metallic parts:*

Both versions mount the same

element in brushed stainless steel.

Dimensions

Base 24 cm

Container 22 x 22 x h 23 cm

Max height 72 cm



see the video

CODE	DIMENSIONS	Weight	MATERIAL	COLOR/FINISH
PT 005.00	24 x 24 x 72	8 KG	DuPont™ Corian®	Glacier White matt
PT 005.01	24 x 24 x 72	8 KG	DuPont™ Corian®	Royal Red matt
PT 005.06	24 x 24 x 72	5 KG	Materiale plastico a spessore	White matt
PT 005.07	24 x 24 x 72	5 KG	Materiale plastico a spessore	Red matt



product details

CORIAN®  
DESIGN









**Wall-hung bedside table with drawer and double support surface**

Essential and clean shape. It fits perfectly next to all modern bed headboards. It takes up minimal space. The wall suspension allows you to clean the floor easily allowing the best hygiene.

The curved top uses the property of thermo-folding typical of Corian®.

In a single element elegance and practicality.

It attaches to the wall with a very simple system. On specific request we give the possibility to bring the electrical sockets on the side which are thus hidden and more comfortable even the wires of lamps and mobile phones will be hidden.



The drawer slides on two lateral guides made of wood with the ancient technique with which the drawers have been made for centuries ... up to the economical and modern metal guides that are quick to install but with their size reduce the capacity.

We have preferred the ancient technique also because when you open the drawer, you will hear the natural sound of wood flowing; they are very small differences but for us they represent an internal elegance that some people are able to taste.

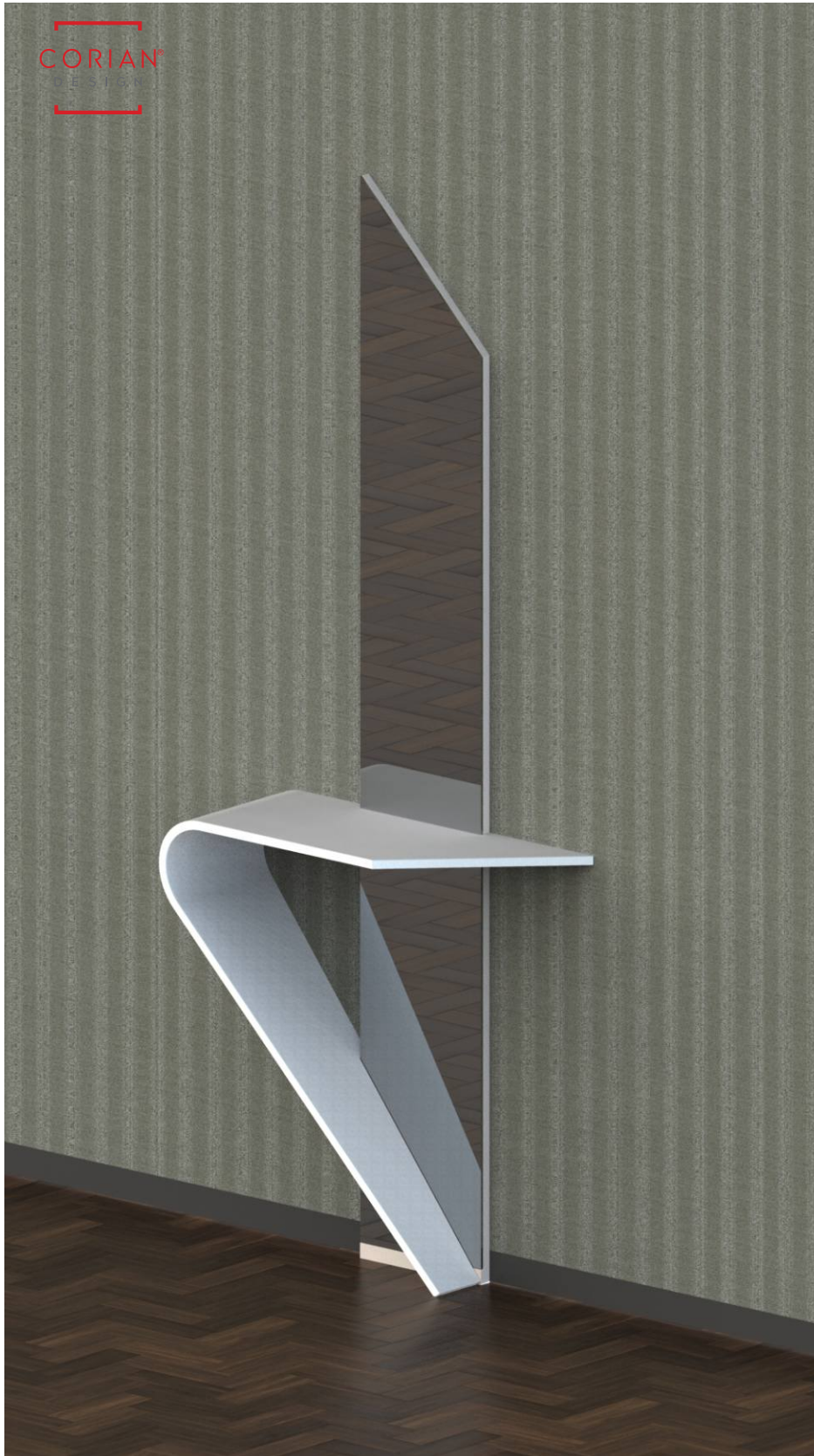


Oak wood treated with visible grain- Matt white



product details





**Wall console in Corian or  
lacquered wood.**

Elegant console ideal for decorating the entrance of the house or office. It fits great in narrow corridors. Convenient top empty pocket with mirror. Suitable for sober and elegant furnishings. It manages to furnish even in tight spaces. Essential and clean shape. It fits perfectly into all environments and takes up minimal space.

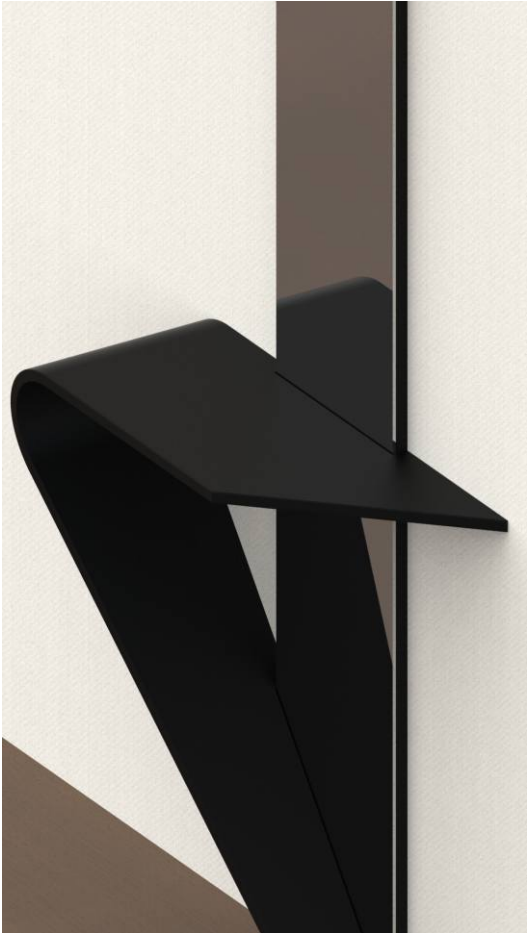
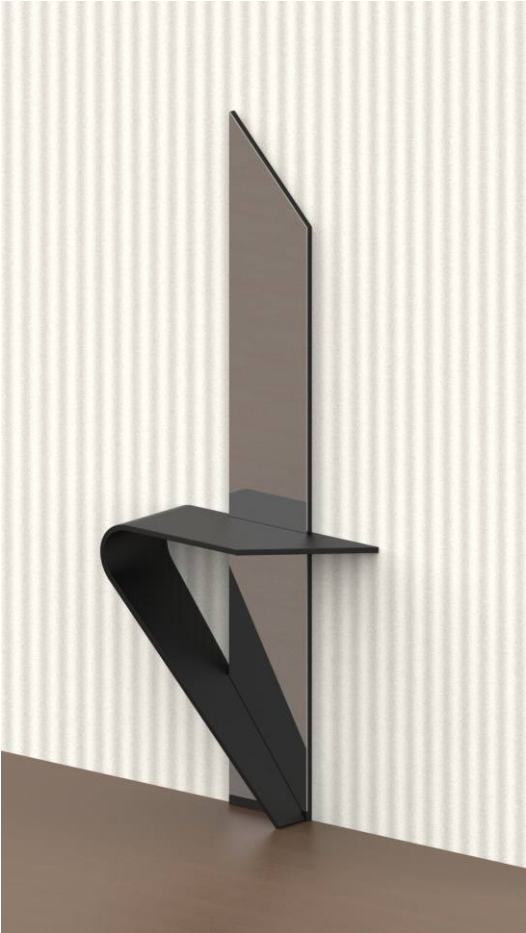
In a single element elegance and practicality. It attaches to the wall with a very simple, effective and fast system.

Original and simple  
High quality materials. Hand built by talented Italian carpenters and Corian certified.

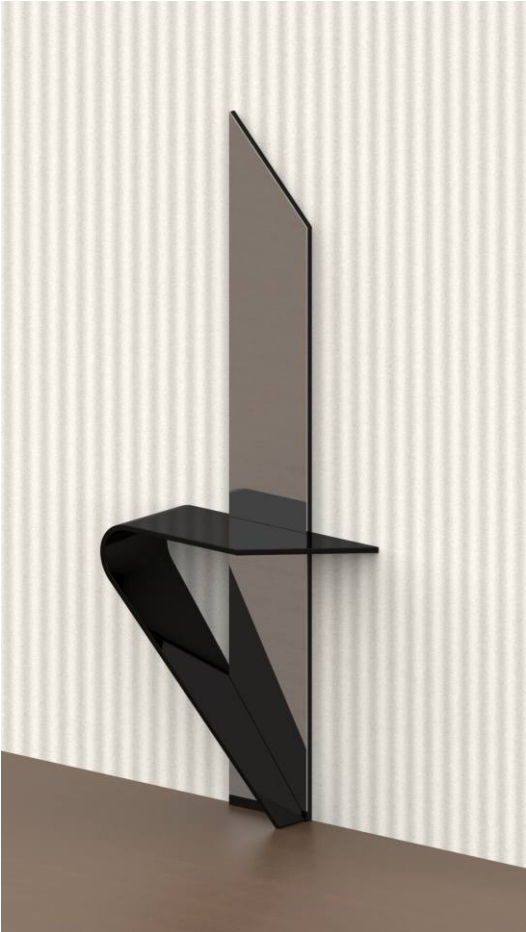
Essential and refined modern design, it will make your environment beautiful and original. Unique and exclusive object; not for sale in common shops.

It is very easy to assemble,

[See the video: CLICK HERE](#)



matt



polished



CORIAN® DESIGN

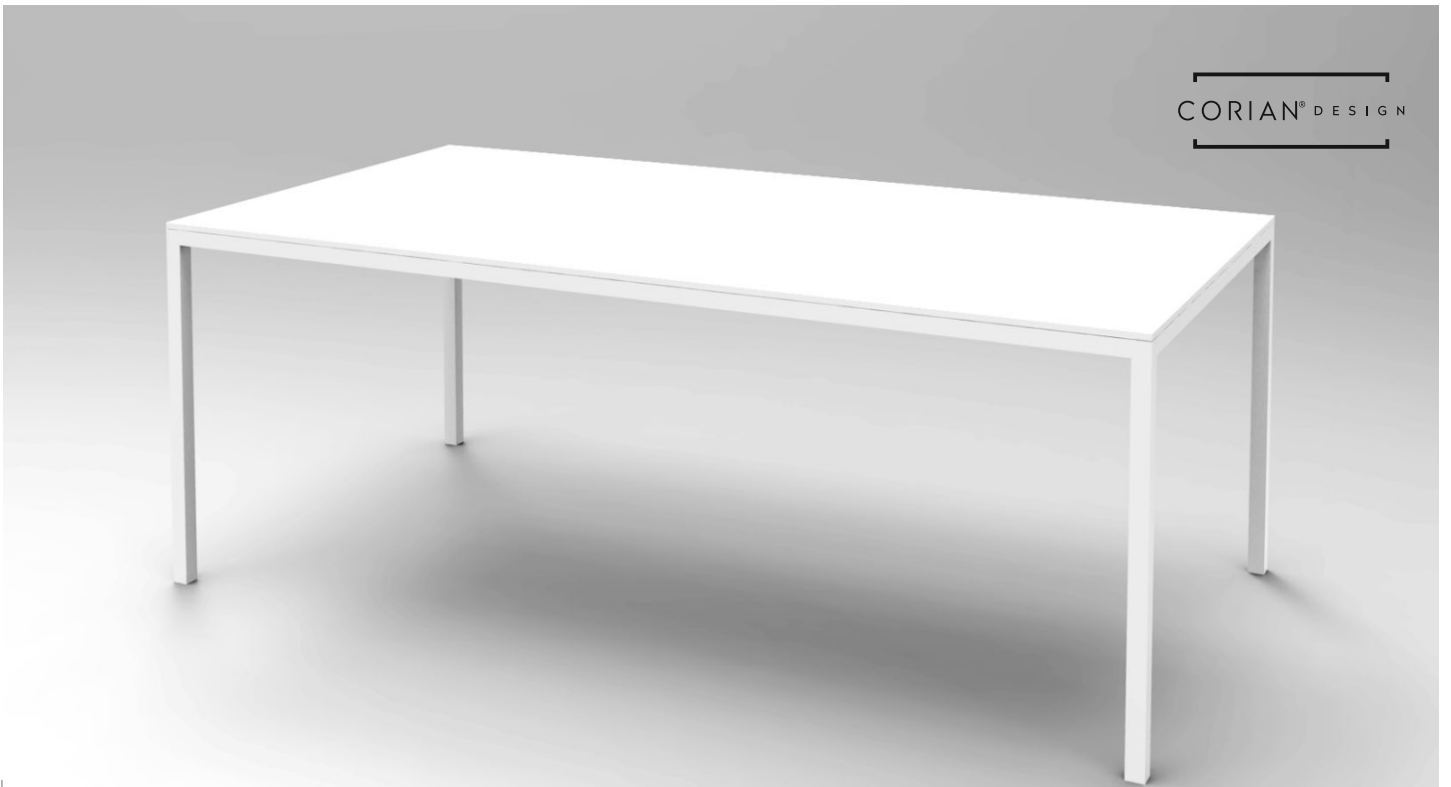


Table with Corian top and base in matt white painted steel



CORIAN® DESIGN

Table with Corian top and hand-polished stainless steel base

table

ultralight

lune  
design



**Description:**

Table top in DuPont™ Corian® with a thickness of 1.2 cm. Slight bevel on the edge. Matt smoothing \* on all visible sides. - Simplicity with minimal sections; it is the archetype of the table. Design Ezio Colombrino. Its elegance is given by the right proportions and simplicity. Pure and essential form where everything is at a minimum. It is made with the best materials.

Structure in polished or satin stainless steel. All made by hand.

The base being in STAINLESS STEEL tubular will not have any perishable treatment over time such as chrome plating or other: pure and simple polished or hand-brushed stainless steel. This table, due to the excellent quality of its two components (DuPont™ Corian® and stainless steel), can be used both inside and outside homes).

**Structure:**

"mirror" polished stainless steel  
brushed stainless steel (satin effect)  
matt white painted steel  
matt black painted steel

**Dimensions**

The tables are all 74 cm high  
180 x 92 cm  
200 x 92 cm  
220 x 92 cm  
240 x 120 cm  
150 x 150 cm



product details

**Top materials:**

DuPont™ Corian® color matt white mod. Glacier White  
DuPont™ Corian® in matt black mod. Deep Nocturne

It is possible to make the tops with all the available colors of DuPont™ Corian® with an increase of:

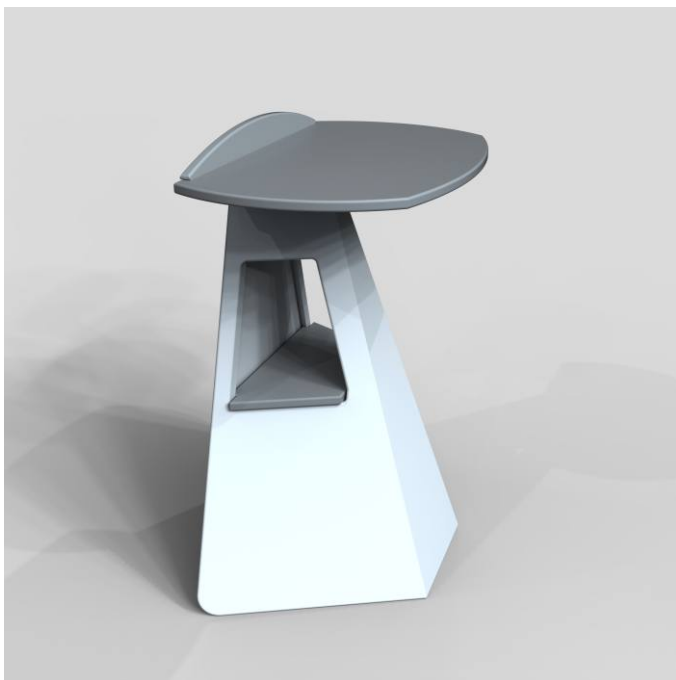
10% for category 1 and 2 colors

20% for category 3 and 4 colors





Bedside table in wood - Structure in wood or in matt white lacquered wood - Tops in Corian





# Fruit bowl Centerpiece

## “Lunar Disc”



Centerpiece and fruit bowl in DuPont™ Corian® and fusion glass

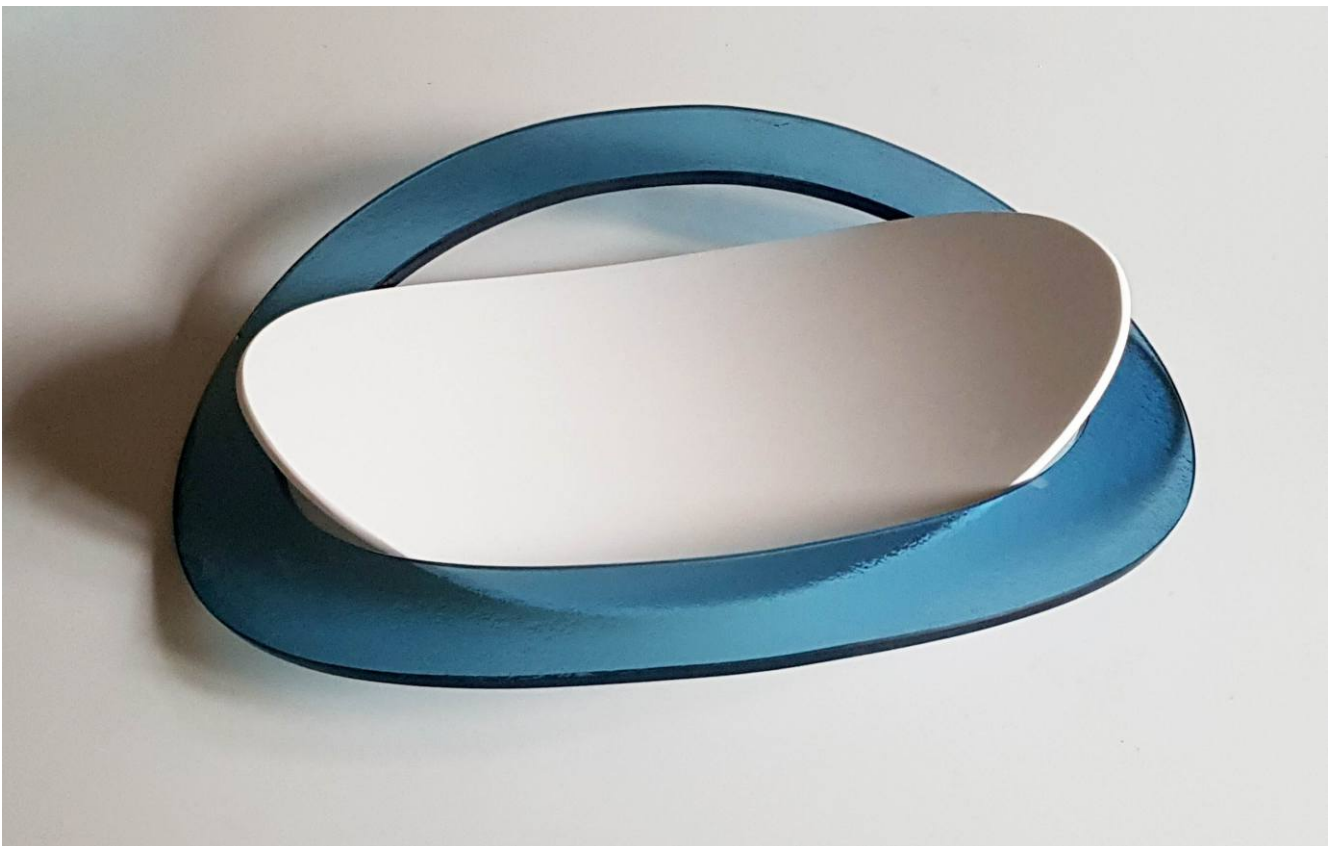
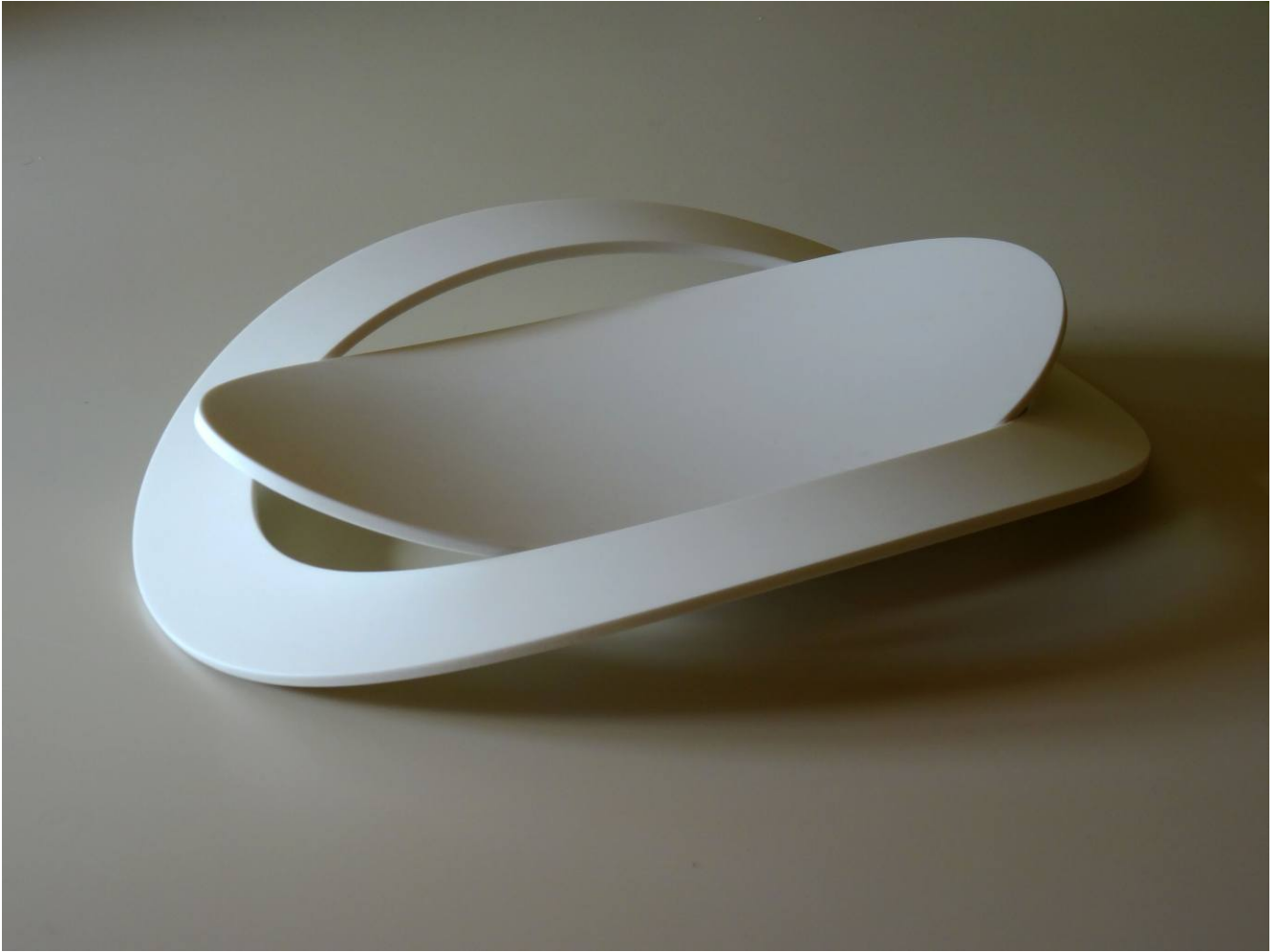
The simplicity of the shapes give a unique elegance.

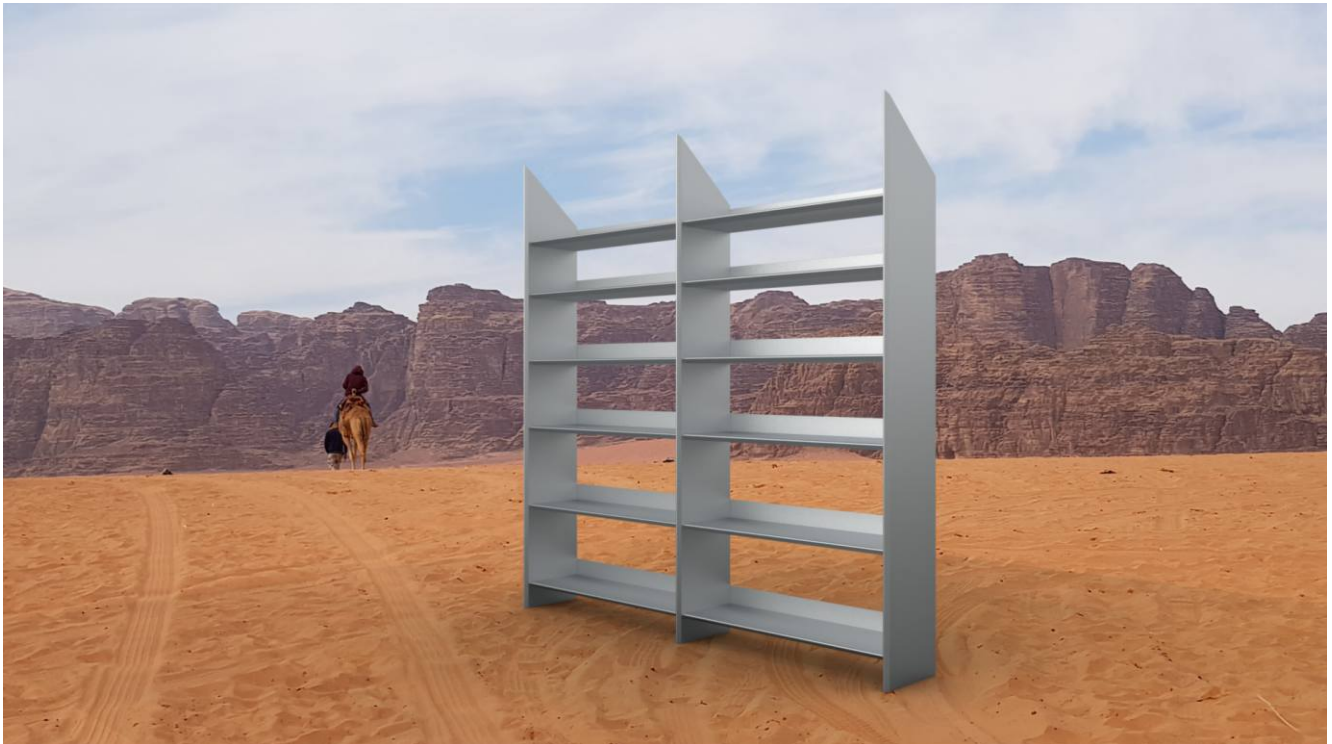
Exclusive materials and in combination with each other enhance the beauty of this object even more. Very suitable for a gift, it goes well with all modern furnishings. The light rocking, resulting from the ellipsoidal shape of the base, does not preclude the stability of the object and gives it that drop of curiosity that almost pushes you to touch it. . . These are two thermo-formed elements in Corian, one of which rests on the other

See the video: [CLICK HERE](#)









Modules composed of 4 elements made with 3 mm folded aluminum plates. Cute Lite Penta laser bending and cutting, 8000 watt plus tube.

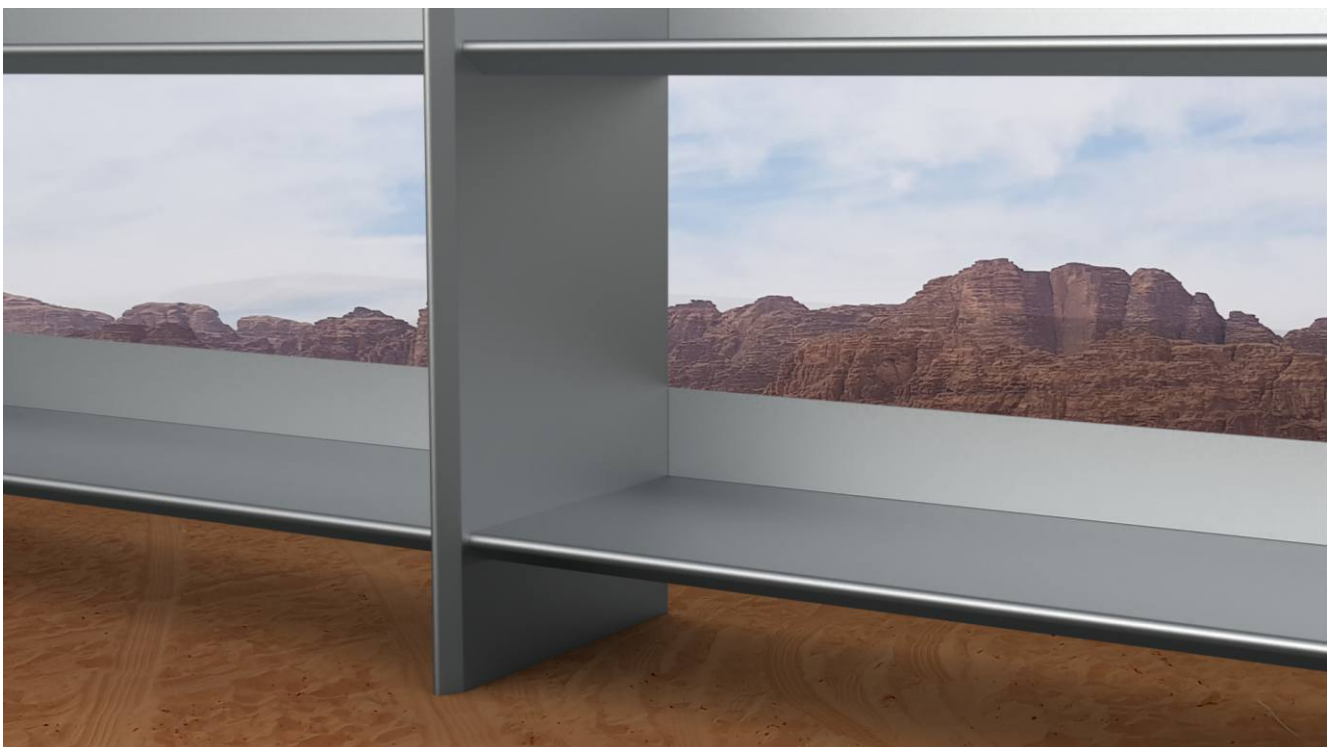
Shelves with aluminum structural bars. The bracing system integrated in the shelves gives excellent stability to the bookcase: the only bookcase that supports... the weight of your knowledge !

### **Ecodesign for a correct end of cycle of the object:**

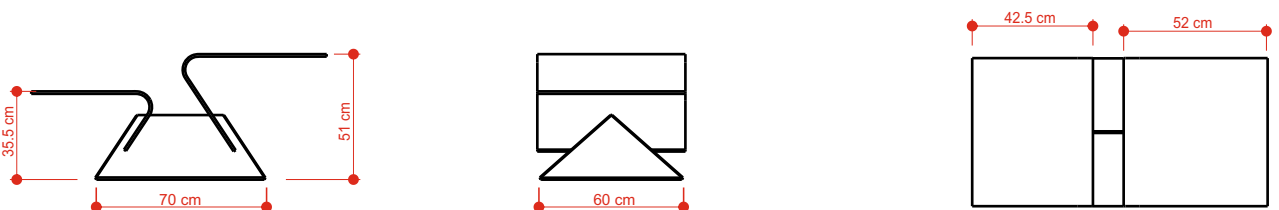
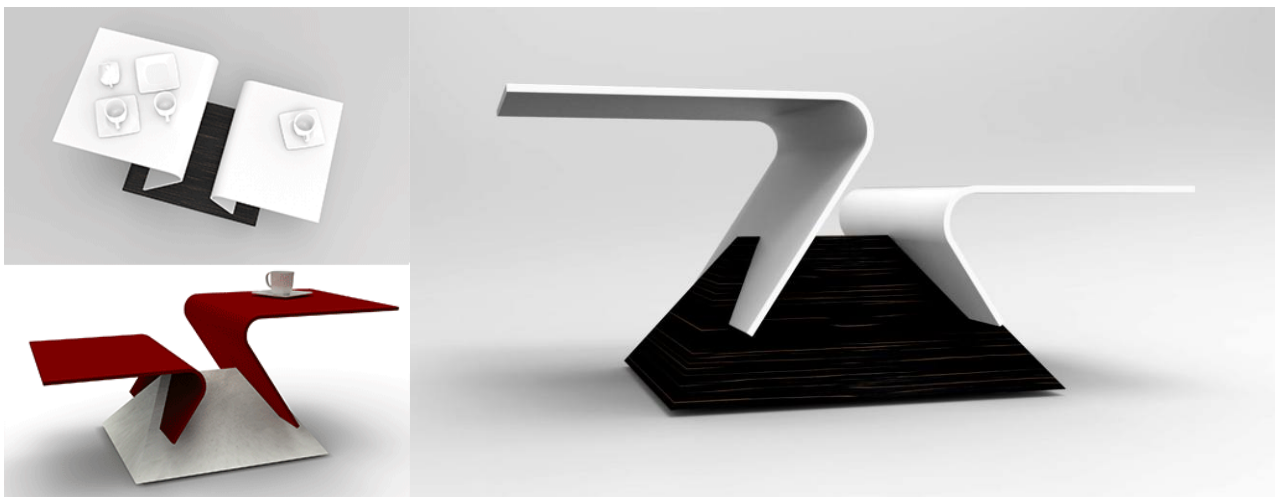


- Monomaterial: aluminum only, for complete recycling
- Completely disassembled- Lightweight and resistant to be transported or shipped
- No paints: natural aluminum brushed with beeswax

See the video: [click here](#)



'Virgola' is a coffee table that fits well near the sofas. The retractable wheels allow the table to be moved with extreme ease allowing maximum cleaning. The high surface is very convenient for resting the notebook when using it on the sofa or in bed. Base in various types of wood. The Corian tops fit into the wooden base; they are interchangeable and give three different combinations of the tops in height





# 'Palchetto'

The best sound system for TV, projector and media

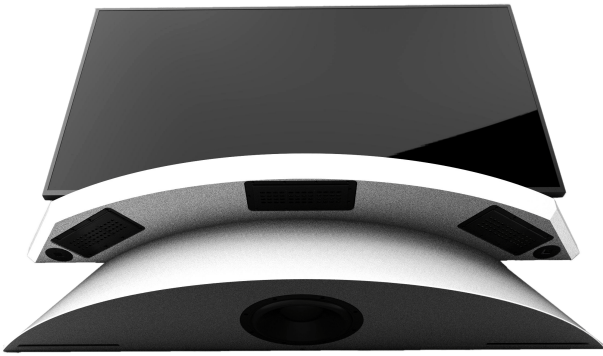


You will perceive sound in an extremely uniform way throughout the room, while maintaining the spatiality of the stereo channels in a unique way.

For maximum quality and precise sound optimization, the system is managed by DSP (Digital Signal Processor)

Speakers configured in "Left, Right, Center, Sub" mode. The system can therefore manage a normal stereo signal but also 4/6 of a surround system. In fact, it is possible to add 2 surround speakers to have a complete 5.1 system. The box will connect in a simple and instant way directly to the TV or to tel. mobile phones or other devices

## Electronic part



Speakers configured in “Left, Right, Center, Sub” mode. The system can therefore manage a normal stereo signal but also 4/6 of a surround system. In fact, it is possible to add 2 surround speakers to have a complete 5.1 system. The box will connect in a simple and instant way directly to the TV or to tel. mobile phones or other devices

For maximum quality and precise sound optimization, the system is managed by DSP (Digital Signal Processor)

3 planar full range speakers + 2 tweeters and with the addition of a bass reflex subwoofer

Technical description of audio / electronic parts:

### Electronics

Our active loudspeakers are fitted with the Onewave electronic board designed and built by our electronic engineers.

Audio output in analog format on channels processed by the DSP

Audio output in I2S / TDM digital format processed by the DSP

Analog audio output from the Bluetooth module not processed by the DSP

Analog audio input directly connected to the DSP

SPDIF digital input connected to Wm8804

Control signals and LEDs of the Bluetooth module

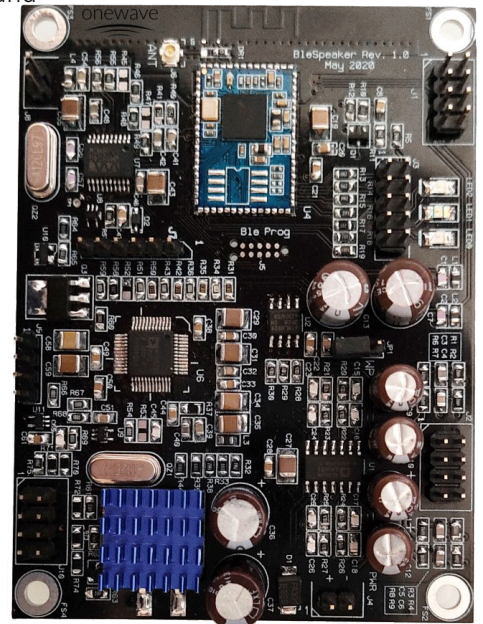
DSP control signals

Programming connectors

Power connector

The board can be powered with a continuous voltage from 5V to 25V.

Low ESR Elna Electrolytic Capacitors



### Connectivity:

- Bluetooth 5.0
- Left Right Analog, or Left Right Center Sub

### Speakers:

- Planar full range and planar tweeter on the left and right channels
- Planar full range on the Center channel
- 20 cm high excursion woofer on the Sub channel for an extended response up to 35 HZ

### Amplification:

- Multi - amplified system with 4 ways each managed with a single 100W RMS Hypex class D amplifier for a total of 400W Rms.

### Technical description of wooden parts:

Structure in multilayer wood and high density MDF.

External finish: Matt or glossy white lacquer

Fixing system included (very easy to install)

Connections in Bluetooth 5 with Qualcomm® aptX™ HD Audio Chip.

(APT-X increases digital audio compression in HD with the apt-X codec without loss of information)



# The joinery in history

*Some difficult work done entirely by hand*

Our artisan production continues in the tradition. From father to son, ancient and rare cabinet-making and processing techniques are handed down. These techniques are the basis for a new and modern approach to our new craftsmanship; both with traditional materials and with the most innovative ones.



*A sinistra il nonno Giuseppe Trivelli, nella bottega all' inizio secolo*



*Franco, Giuseppe and Marco Trivelli (last generation)*



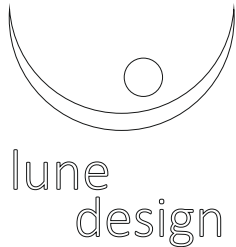
*Franco Trivelli*



*Ezio Colombrino In falegnameria*



*5-axis CNC*



[www.lunedesign.it](http://www.lunedesign.it)

#### Contacts Italy

[arch. Ezio Colombrino](#)  
via Mauro Leone, 50  
80038 Pomigliano d' Arco, Napoli  
office +39 0818035779  
mobile +39 3289046655  
info@lunedesign.it

#### Contacts USA

Phil Morse  
+1 603 491 1384  
tel. +16034911384  
phil@philmorse.com  
5 arlington street #1  
Cambridge, MA 021  
po box 217  
Elkins, NH 03233

#### Contacts Asia

China Business Consultancy Services  
Rm 720, 7th/F, Fuying International Building  
N.166-3 Chang Gang Zhong Rd.,  
Haizhu District, Guangzhou, PRC  
Zip code: 510250  
Tel. +86-20-84263375 - Fax.+86-20-84263053  
E-mail: sebastiano.losapio@gmail.com



Lune Design is a line of objects produced and sold by Arco Arredo.  
Arco Arredo is a company certified by DuPont™ Corian®. Quality Network Industrial Partner n. 1195  
Registered at the Chamber of Commerce, Industry, Crafts and Agriculture of Naples  
REA N°: NA- 797794 P.I. 06133261211

via Mauro Leone, 50  
80038 Pomigliano d'Arco

tel. +39 081 8035779  
cell.+39 328 9046655

info@lunedesign.it

---