



THE PARK TOWER WEST PROJECT

BY ANDRÉS AYBAR

THE TOP INTERIOR DESIGNER PRESENTS
HIS TAKE ON THE MID-CENTURY MODERN STYLE



THE PARK TOWER WEST PROJECT BY ANDRÉS AYBAR

The Top Interior Designer Presents His Take On The
Mid-Century Modern Style

Park Tower West is the first design project created completely by El Estudio Store, where more than 30 naked substitutes from around the world intervened. All of the mid-century modern interiors were careful though, by the renowned designer Andrés Augusto Ayber, that managed to combine a unique collection of products from the world's exclusive design firms, such as Essential Home, Bosa, CC-Tapis, Dooq, Bomma, Brokis, among others.



Featuring eleven years of experience in the interior design industry, the interior designer from the Dominican Republic, Andrés Augusto Aybar, does not limit himself to a single design style or a specific period. He is someone who knows how to materialize his ideas and uses his creativity mixing elements that he likes, thus achieving the best possible designs. After getting some experience as an interior designer in Barcelona and Miami, Andrés decided to found his own design practice, called **El Estudio Interiores**, a firm that is **dedicated to create unique commercial and residential spaces.**



The power of craftsmanship arts and handmade products was something that Andrés and Lissette wanted to incorporate in this residential project. *"It is the value of the human and the sensitivity that we have lost so much today, and that is what makes it magical. It was important that each of these chosen elements had a special feeling with a story to tell behind,"* explained the designer.

As we walk inside this unique residential project, the first thing that pops right out is the **beautiful entrance hall decor that brings out the feminine twist of the mid-century modern style.** The interior design team has created a set of horizontal wooden cylinders degraded into pink tones with indirect lighting from walls to ceiling. This unique design idea reflects a preamble about what we will see inside.

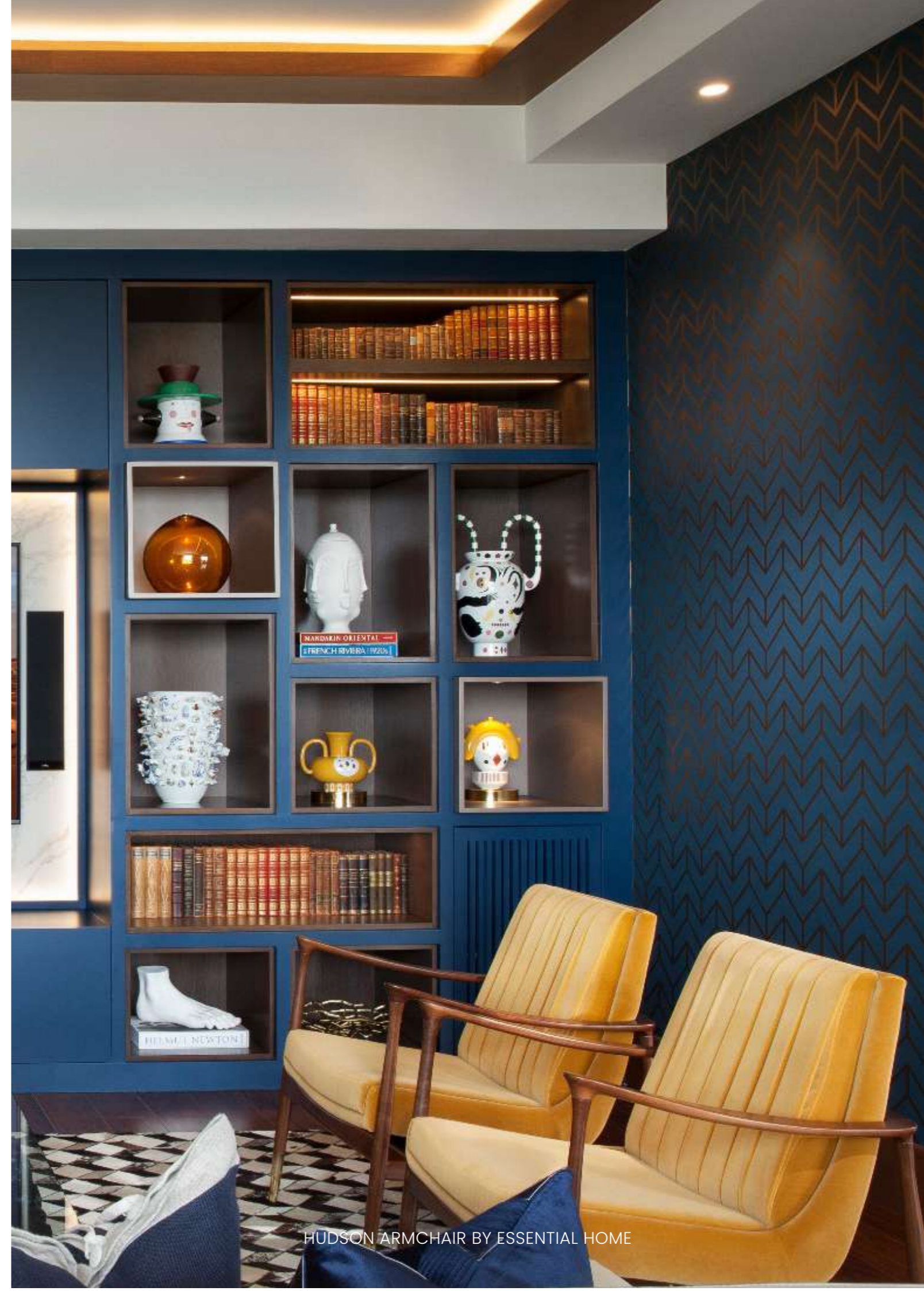


Just a few steps ago is the magnificent grand hall with a beautiful lighting statement piece in the middle that captures all of the attention. Standing next to this beautiful combination of lighting and furniture design is **Essential Home's Anthony Sideboard** along with Kelly Wearstler's "Forma" lighting. This is space is the big entrance for one colorful living room design in this unique residential project that is considered to be the statement of the entire design.

Recognized as "The Vibrant Room" by Andrés Ayber, this beautiful living room project combines a unique and cheerful color palette with some trendy furniture pieces that have a great personality. **Inspired by the energetic vibes of the 20s, the "mid-century" design style** of this interior design vibrates, both for its shapes, its geometric tapestry, and its solid explosion of colors, making sure that every corner has a warm charm of the time.

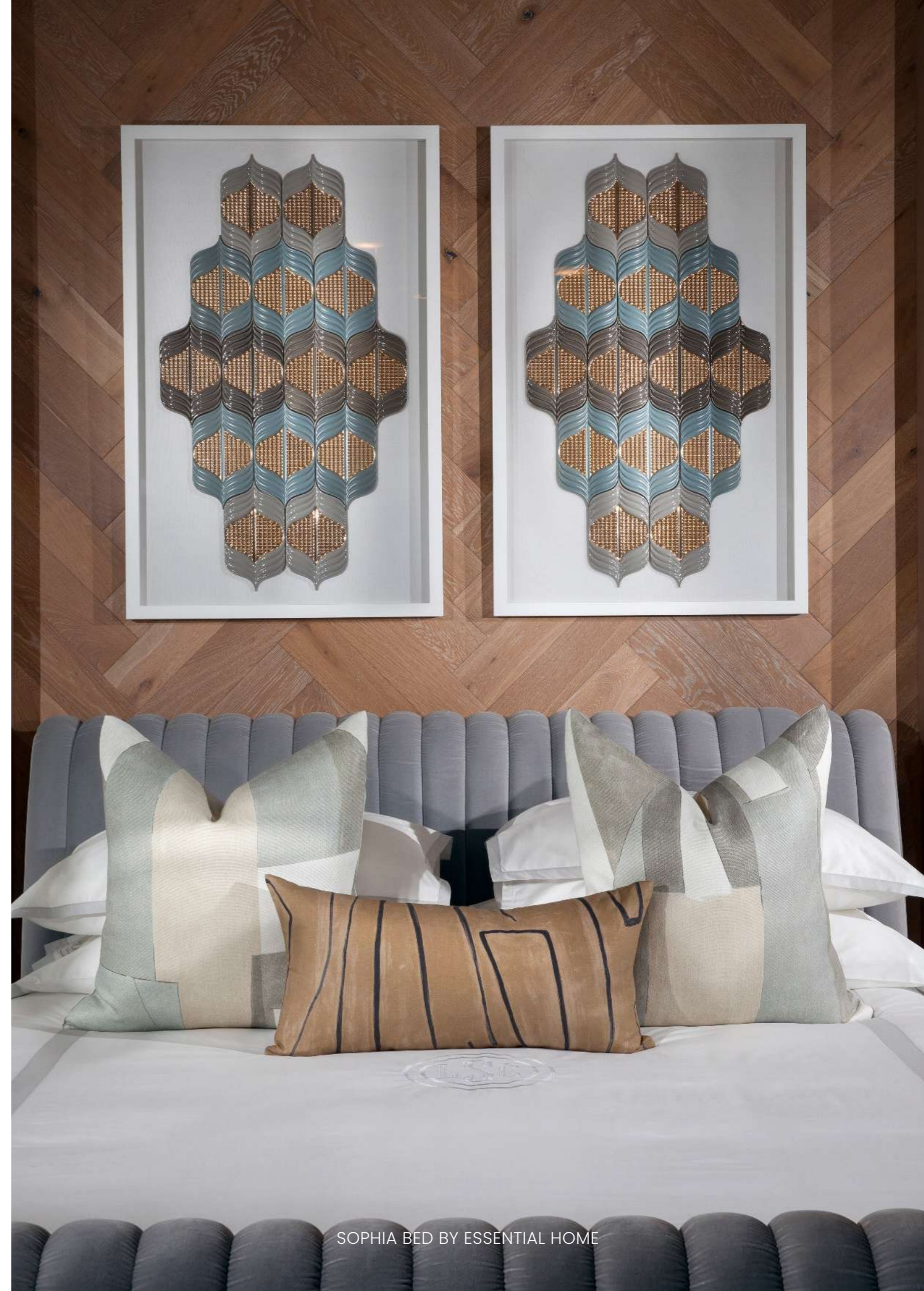


Featuring an open space flow with a panoramic view of the Parque Mirador Sur de Santo Domingo, this living room project has its own private corner called the “Blue Room” for more intimate moments. Just like the name says, this smaller living room project turns around the classic blue color palette, from the walls to the **beautiful Mansfield Armchair by Essential Home** on the reading corner, that is later combined with some bright pop of colors bring the space some life. **The bright mustard colors of Essential Home’s Hudson armchairs** add some light into the design bringing a casual and comfortable style and making it more beautiful and trendier than ever.



There is no doubt that the living room is one of the most important spaces in the entire residential project by Andrés Augusto Ayber, however, the designer has prepared another incredible surprise that nobody was expecting. The master bedroom design is dedicated to all of the mid-century modern lovers and you're about to find out why.

Featuring a unique combination of outstanding views and big high ceilings, this **mid-century bedroom design** is all about elegance and sobriety, introduced by a palette of calm colors and a lot of natural light that was combined with unique geometric pieces and rich textures. The star of the show is the beautiful **Sophia Bed by Essential Home** that is upholstered in a smooth light grey velvet texture to complement the sense of calmness introduced in the design.



Inspired by those 50-year-old hotel suites, the unique mid-century bed design by Essential Home is complemented with two beautiful armchairs (also upholstered in velvet) called Ellen. These unique pieces feature a modern tub design, with a mix of the contemporary and mid-century style. However, the interior design project is elevated to the ultra-luxury stand when Andrés decided to incorporate a charming sunbath space with a view of the park and the sea, **where all eyes go to the iconic Elle dining chair by Essential Home.** This home project truly elevates the residential industry to a level that we haven't seen before.



ABOUT ESSENTIAL HOME

Essential Home sees this style as a stylish sanctuary from the stresses of life.

In interior design, it's all about respect for history, you should bring together the iconic character and elegance of the space with practical luxury. But Paris as it's fun and magic side, and Parisienne style is that whole idea of anti-decor, always have to look like you've done it yourself like a true French.

What better way to represent them to mix our soft and clean Marco Dining chair with the robust and sturdy Bertoa marble table. The key is to Keep it simple, mixing vintage with new, and allow our memories and treasures brought home from travels to shape the space rather than sticking to any particular interior Style.

CONTACT US

PRESS TEAM

PRESS@ESSENTIALHOME.EU

PRESS MANAGER – SOFIA FONSECA

SFONSECA@DELIGHTFULL.EU

[@ESSENTIAL_HOME](https://www.instagram.com/ESSENTIAL_HOME)