

COLLECTIONS

4

Zollanvari
INTERNATIONAL



WWW.ZOLLANVARI.COM
Creators of Carpet Art





Zollanvari International

Our carpets embody the spirit of Persian carpet design and weaving – an extraordinary art form that has been treasured across the world for more than 2,000 years. This profound understanding of the splendour and profusion of the Persian weaving aesthetic informs our carpet production, making it unique and timeless – qualities that have established the Zollanvari name as a global trail-blazer in creating carpet art.

Our commitment to the creation of superior quality carpets and exclusive designs, at the same time as the preservation of the immense Persian heritage of carpet art, has inspired us to push the boundaries of carpet design and weaving techniques – from the minimalist development of our tribal Gabbehs and Flatweaves to the innovative reinvention of classical patterns seen in our Designer Isfahan Collection.

The highest-grade highland wool from the Zagros Mountains is used to weave Zollanvari carpets and flatweaves. The wool is very supple and ideal for rug making and it is traditionally hand-spun. We exclusively use natural dyes made from plants collected from the immediate vicinity of the nomadic weavers. The concept of a resource-efficient and sustainable production is deep rooted in our company and production tradition. We have endeavoured to revive old weaving techniques (some almost extinct) to encourage the diversity of weaving techniques and to develop new ones.

We cultivate and nurture extensive personal relationship with the various nomadic tribes in Iran. Our carpet production distinguishes itself by a sensitive regard for the traditional way of

life of the nomads and their natural environment. Wages are relatively high and allow a large degree of autonomy for the weavers. Widowed and single women can remain independent by becoming weavers and having an independent income. This empowerment goes some way to strengthen the position of women in society.

All our products carry the Zollanvari Label & Warranty, which guarantee that all our carpets and flatweaves are made from hand-carded and hand-spun wool, dyed using the highest quality environmentally friendly vegetable dyes at our central headquarters in Shiraz to maintain consistent colour-qualities, that they are woven by nomadic women and not children, and that each carpet is unique as each weaver has developed their own style, which can differ from carpet to carpet.

With its exquisite patterns and the finesse of its quality a Zollanvari carpet captivates and enhances the beauty of its surroundings. The vibrant colours and timeless designs we create combine perfectly with contemporary as well as traditional interiors. *Collections 4* abounds with new individual designs and collections that demonstrate our continued commitment to being at the forefront of the designer handmade carpet-weaving industry. This commitment has made us work with several design studios this year to strengthen further our offering to buyers and lovers of carpet art.



The Story of Zollanvari

Zollanvari are premier producers of tribal, classical and modern carpets in Iran. Our passion has always been for the artistic weavings of the nomadic people of southern Persia where almost all our collections are woven. The art of carpet making has always exemplified the expression of a culture and of a way of life, and as a result Zollanvari's use of pattern, colour and symbolism has been constantly evolving. What sets us apart is the active encouragement our weavers are given to allow their own aesthetic sense to shine through the designs. Individual, expressive and unique carpets are the result.

The story of Zollanvari began when in 1947 at a tender age Gholam Reza Zollanvari joined his father's carpet business, a legacy that was handed down from his great grandfather. Initially he focused on the traditional products of the nomads of South Persia. Those colourful carpets with high piles, Gabbehs, were knotted only for use in homes as bedspreads and bedcovers. They were and are a vivid expression of the art and soul of the traditional weaving and aesthetic of southern Persian nomads.

Appreciation and demand for Gabbehs grew over the years. Gholam Reza Zollanvari began working with the Ghashgha'i and Luri Nomads to start weaving new Gabbehs with more contemporary designs.

In 1985 his son Reza Zollanvari founded the company in Zurich to have direct access to the European market. The company expanded in 1989

when the weaving of large and room size Gabbehs began, using naturally dyed, hand-spun wool. This step is now recognised as a milestone in the history of Persian weaving. The 'new' Gabbehs exploded onto the world market, with new colours, sizes and patterns being woven to satisfy the demands of the Western markets. Soon Gabbehs became synonymous with the Zollanvari name and the company's creative and innovative spirit.

Gholam Reza's second son, Hamid took over the business in Iran. A second centre was built, close to Shiraz which brought together design, dyeing and warehousing under one roof. Washing, finishing, customer services and shipping were then located in a large warehouse in Tehran. The sixth generation of Zollanvaris continues to be active in the family venture in Hamburg, Kapstadt, Wuhan (Hubei, China) and Secaucus (NJ, USA).

Zollanvari are the only Iranian handmade carpet manufacturer to be awarded the OEKO-TEX® Standard 100 Certificate for 'handwoven carpets (rugs, gabbehs, kelims, and jajims) made from hand-spun sheep wool and traditionally dyed with herbal natural dyes'. On inspection, the stated Zollanvari products were granted a Class II certificate, affirming that they meet the human-ecological requirements of the standard established for products with direct contact to skin. This is a huge accolade for Zollanvari as decoration/furnishing items are normally granted a Class IV certificate, since the tests for harmful substances are based on the respective purpose of the materials.



Designer

A select team of expert carpet designers work for Zollanvari in Shiraz creating the detailed cartoons for all our creations. The 'Z Studio' team develop concepts created by Reza Zollanvari or inspired to push the boundaries of carpet design and weaving techniques. In addition we commission and collaborate with design studios such as SoFar SoNear, Milan, and NOV24, Vienna, amongst others, to create carpets with soul, history, innovative spirit and design virtuosity.

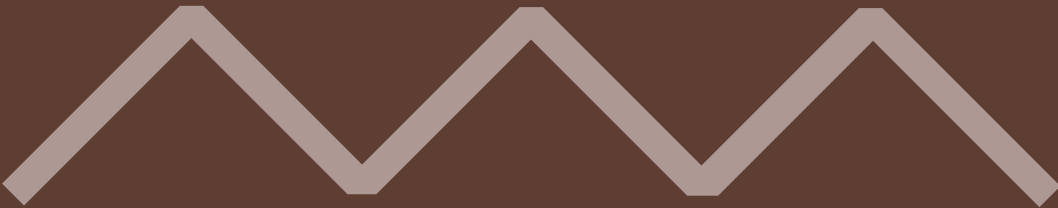
Ghashgha'i meets Bauhaus

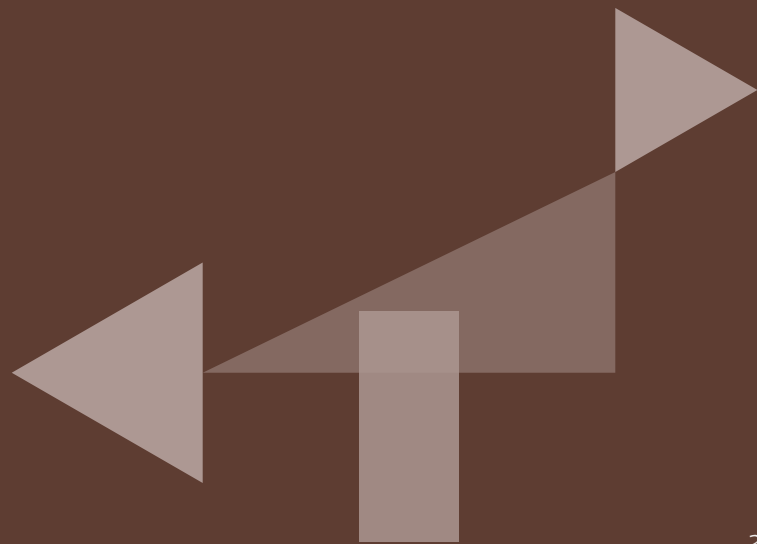
Ghashgha'i meets Bauhaus, shortlisted for Best Collection at the Carpet Design Awards 2020, is SoFar SoNear's latest creation for Zollanvari. Interiors and product designers, they specialise in creating bespoke ambiances and products that reflect the personality of their clients. SoFar SoNear was founded six years ago in Milan by Francesca Gasparotti and Luca Ferreccio. They designed this collection choosing iconic Ghashgha'i motifs that they simplified using squares and triangles. The lion, the peacock, woman and man are the motifs they drew upon merging the style of Gabbeks with the drawings



Designed by SoFar SoNear Studio
for Zollanvari International

of Albers, one of the key masters of the Bauhaus Movement. He studied in depth the interaction of colour and human perception. His paintings and artworks with squares reminded the designers of the geometries of Gabbek carpets and the colour interaction between the single elements woven into them. In Albers's universe, colour seduced, beguiled, swindled, and these characteristics made colour the most fascinating of art's formal elements. This concept is at the very heart of this new collection.

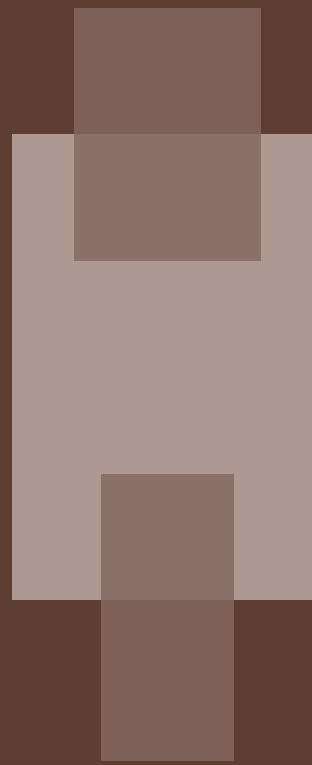




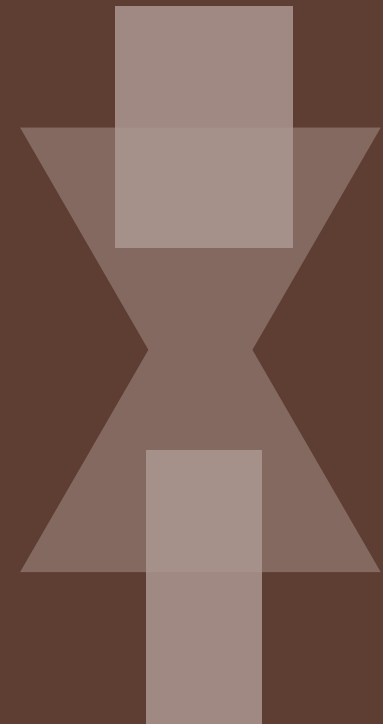
2



3



4



5

- 1 Zig-zag
- 2 Peacock
- 3 Lion
- 4 Man
- 5 Woman





Sunrise, Ghashgha'i meets Bauhaus, SoFar SoNear Studio





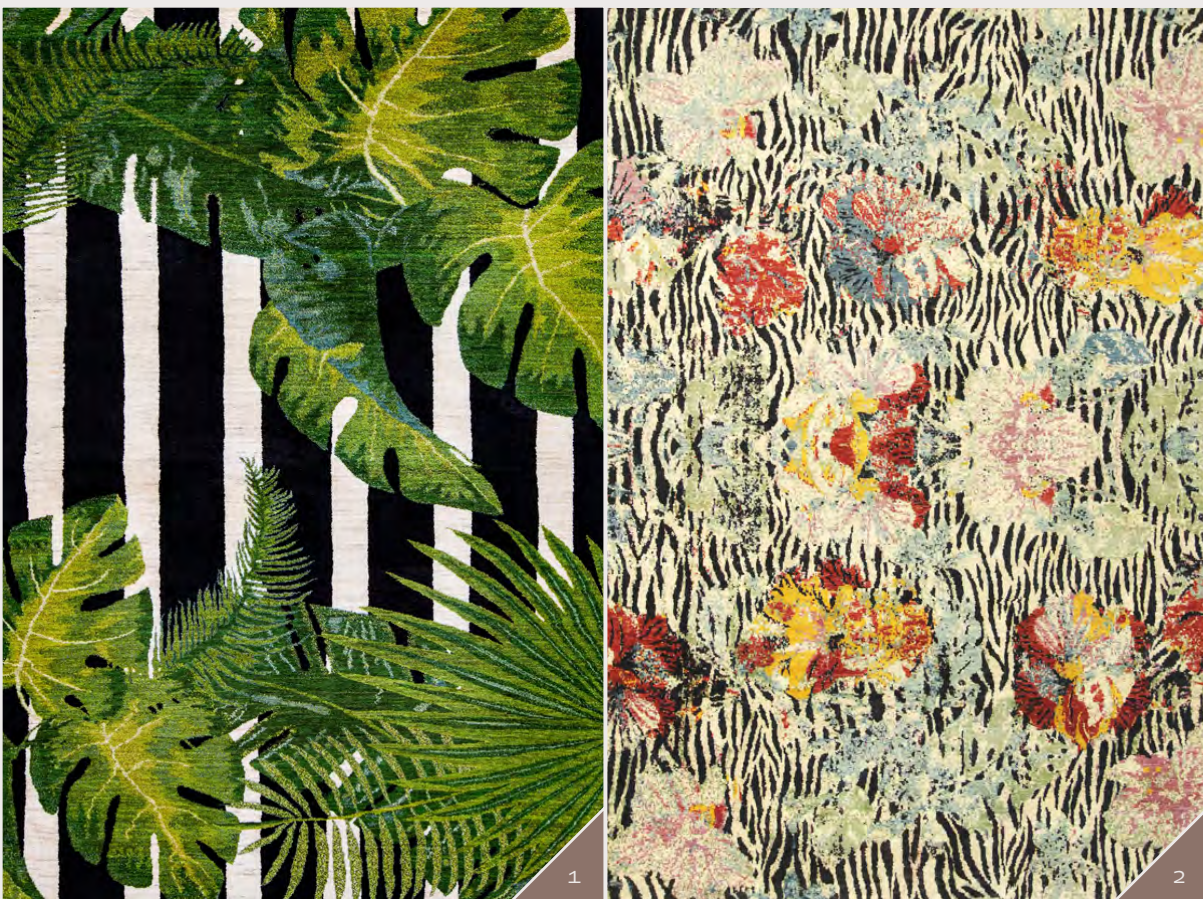
Heritage 2, Ghashgha'i meets Bauhaus, SoFar SoNear Studio



Autumn Rainfall, Gabbehs Abstract & Plain

Gabbehs

The simplicity of Gabbehs with their singular designs and bold colour palette has been a huge factor in their popularity and their appeal to modern tastes. Our Gabbehs collections range from interpretations of the traditional tribal to the spirited and original contemporary. Our latest creations include the retro-inspired *Autumn Rainfall*, the sensory and tactile *Zebras amidst Blooms*, the meisen kimonos inspired *Kyotos* and the mystical *Jungle Beat*. Our Gabbehs are available principally in two qualities: super-fine (Kashkuli) and standard (Amaleh).



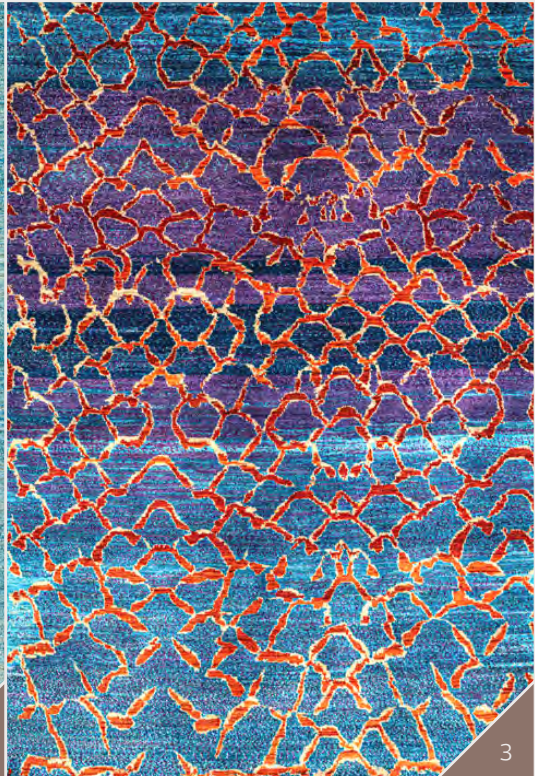
- 1 *Jungle Beat 1, Walk on the Wild Side,*
Gabbehs Flora & Fauna
- 2 *Zebras amidst Blooms,*
Gabbehs Flora & Fauna



Jungle Beat 1, Walk on the Wild Side, Gabbehs Flora & Fauna



The Name of the Rose, Gabbehs Flora & Fauna



- 1 *Mirage 19,*
Gabbehs Abstract & Plain
- 2 *Abstract Winterbound Arboretum,*
Gabbehs Flora & Fauna
- 3 *Tigerfish Scales,*
Gabbehs Flora & Fauna



1

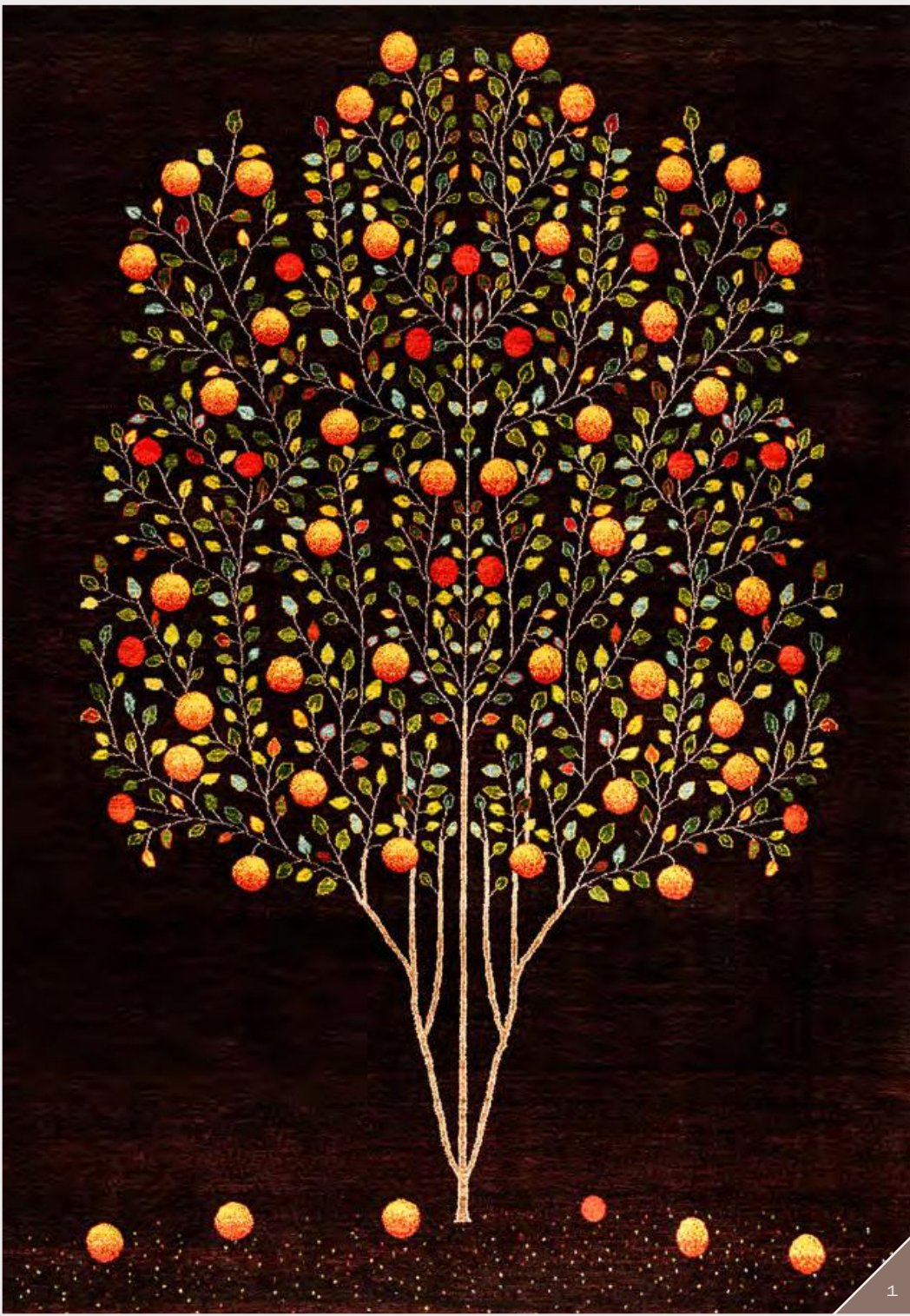


2

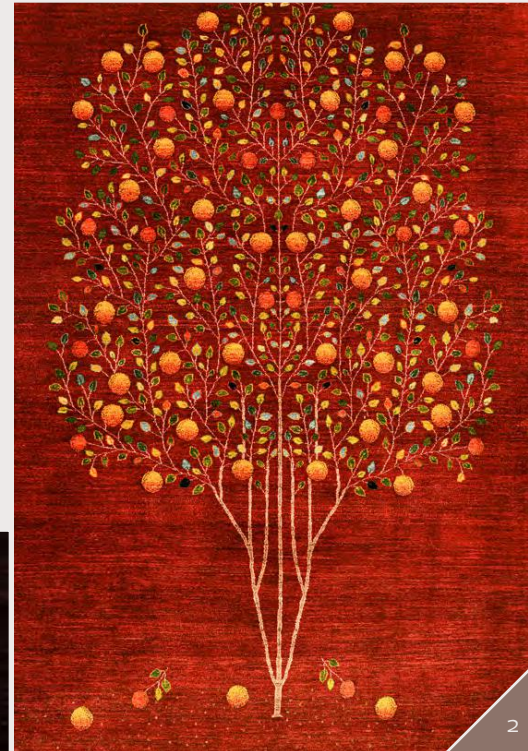


3

- 1 *Garden of Eden 1,*
Gabbeks Flora & Fauna
- 2 *Garden of Eden 2,*
Gabbeks Flora & Fauna
- 3 *Garden of Eden Miniature,*
Gabbeks Flora & Fauna



1



2

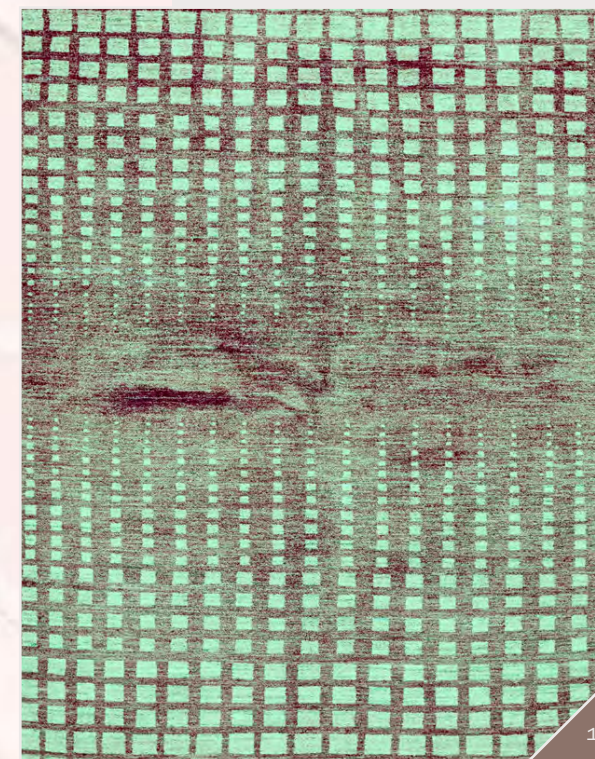


2

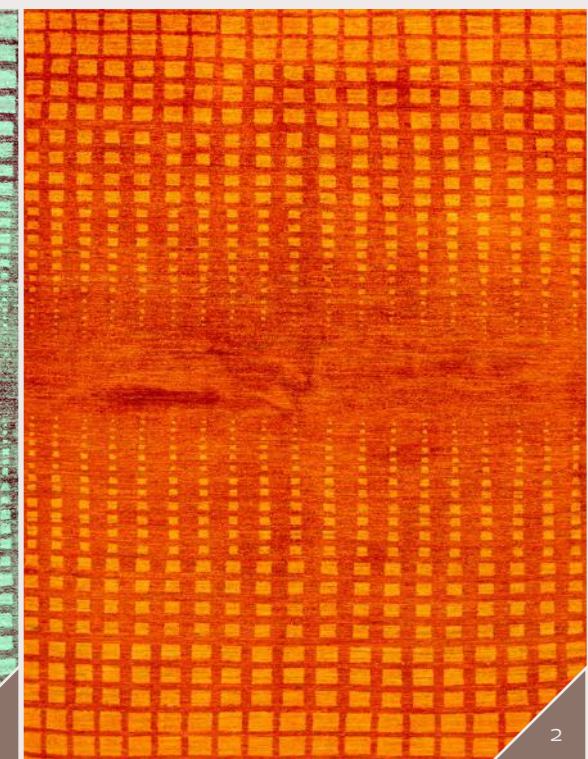


2

- 1 *Pomegranate Tree of Life 6,*
Gabbeks Flora & Fauna
- 2 *Pomegranate Tree of Life 8,*
Gabbeks Flora & Fauna
- 3 *Prancing Tree of Life in Spring,*
Gabbeks Flora & Fauna
- 4 *Tree of Life 20,*
Gabbeks Flora & Fauna



1



2

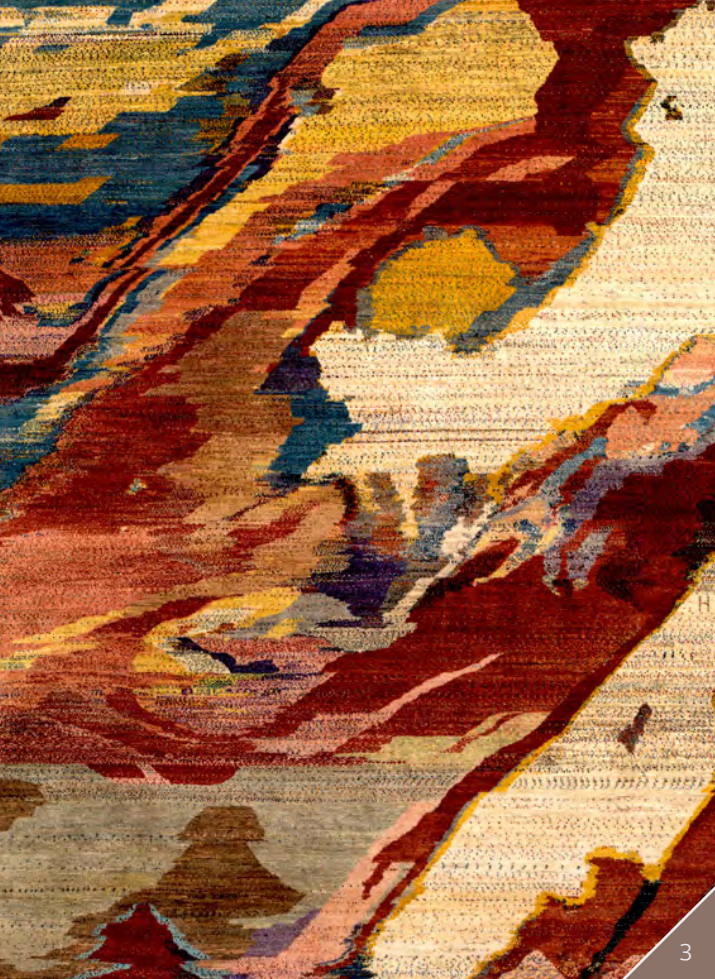
- 1 *Perspectives in Mint Green on Purple,*
Gabbehs Abstract & Plain
- 2 *Perspectives in Orange,*
Gabbehs Abstract & Plain



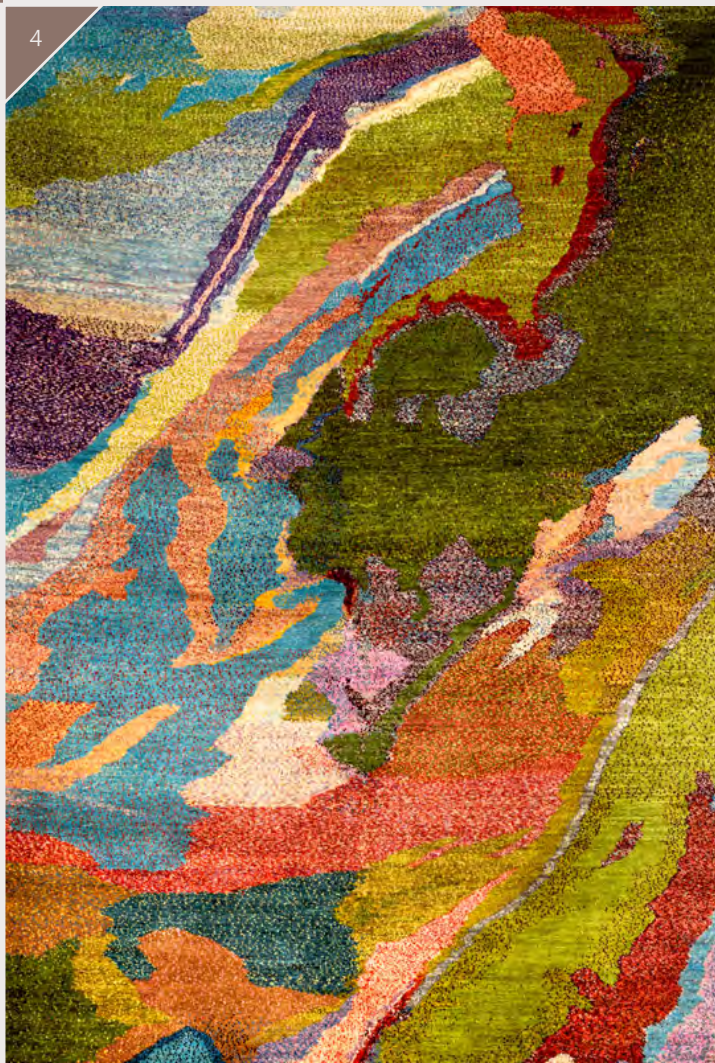
Marmo Pettinato Opale Nero 1, Gabbehs Abstract & Plain



- 1 Marmo Pettinato Azzurrite runner 1, Gabbehs Abstract & Plain
- 2 Marmo Pettinato Azzurrite runner 2, Gabbehs Abstract & Plain



3

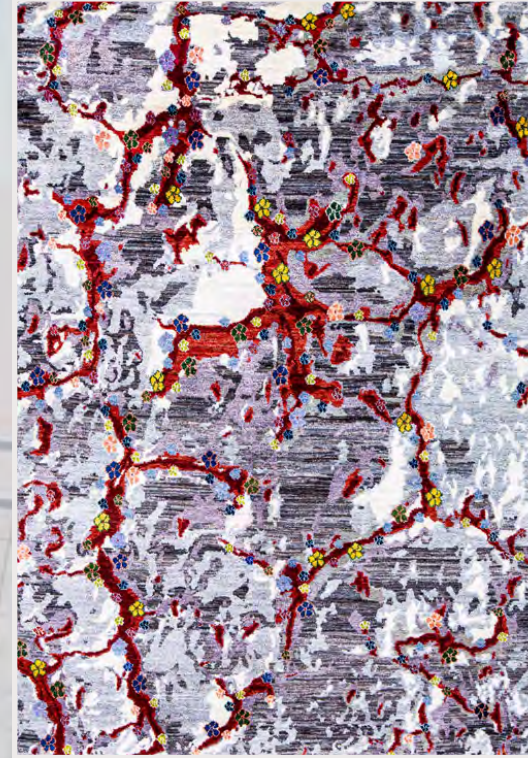


4



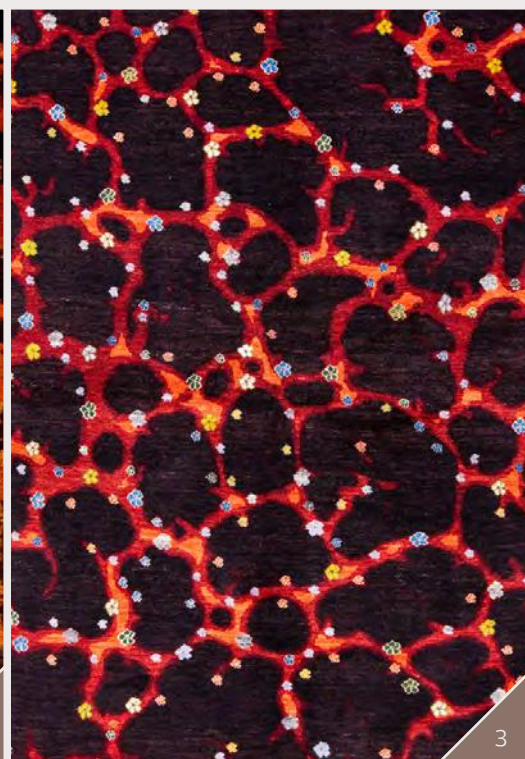
3

- 3 *Marmo Pettinato Tourmaline,*
Gabbehs Abstract & Plain
- 4 *Marmo Pettinato Opale Nero 2,*
Gabbehs Abstract & Plain
- 5 *Marmo Pettinato Titanio,*
Gabbehs Abstract & Plain

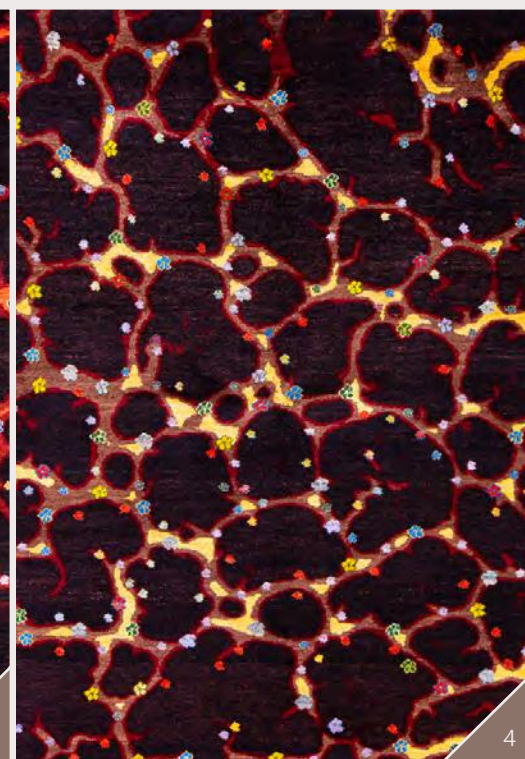




2

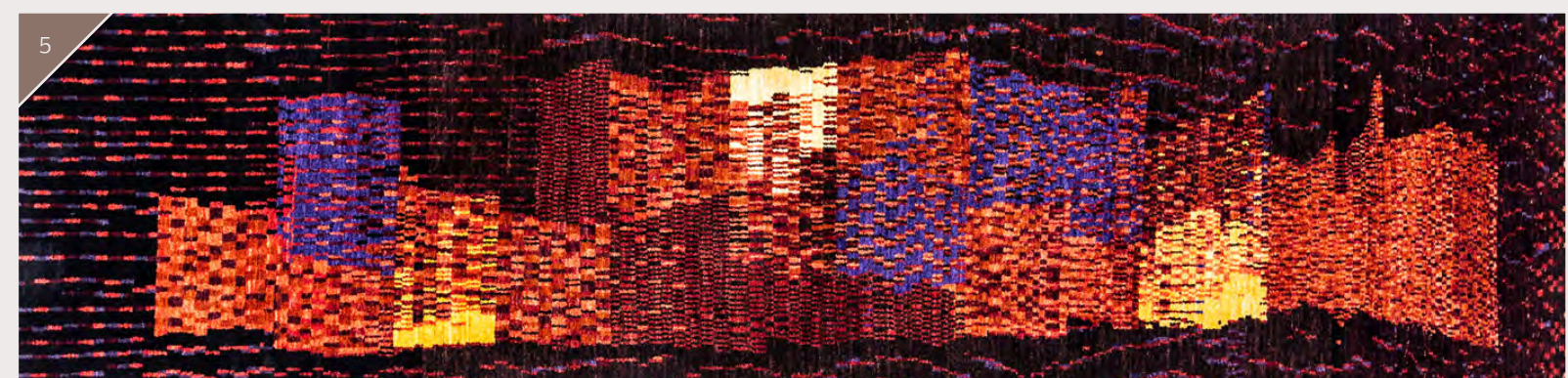


3

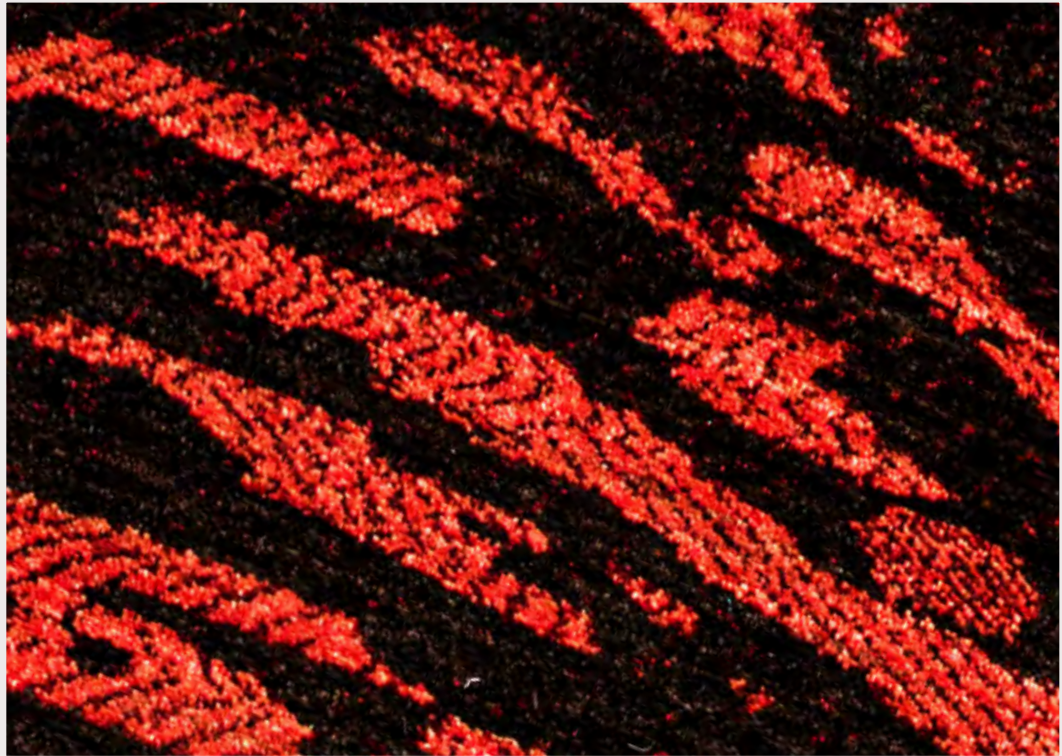


4

- 2 *Cracked Lava 1, Volcanic Collection, Gabbehs Landscapes*
- 3 *Flowers in a Lava Field 1, Volcanic Collection, Gabbehs Landscapes*
- 4 *Flowers in a Lava Field 3, Volcanic Collection, Gabbehs Landscapes*
- 5 *Lava Rain Runner 1, Volcanic Collection*



5



Kyoto Kasuri 2, Gabbehs Abstract & Plain



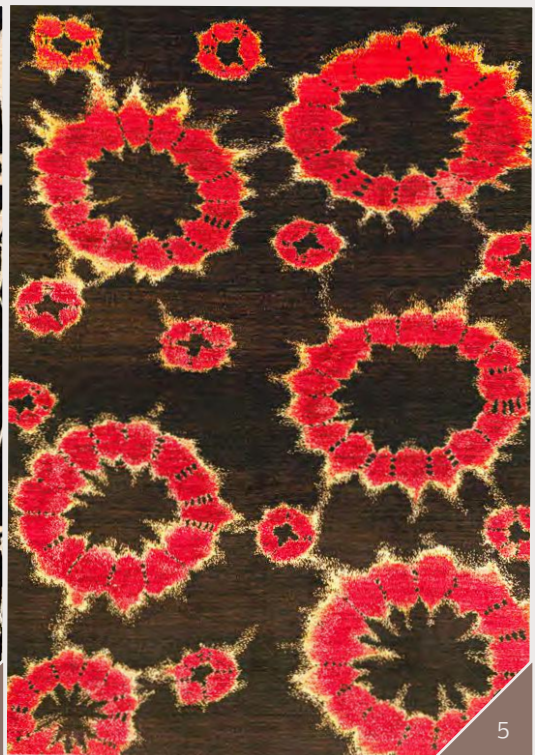
2



3a



4



5



3



4a

- 2** *Art Deco Kyoto Shibori 1,*
Gabbeks Abstract & Plain
- 3** *Sākuru Kyoto in Turmeric,*
Gabbeks Abstract & Plain
- 3a** *Sākuru Kyoto in Turmeric,*
Gabbeks Abstract & Plain (detail)
- 4** *Art Deco Kyoto Shibori,*
Gabbeks Abstract & Plain
- 4a** *Art Deco Kyoto Shibori,*
Gabbeks Abstract & Plain (detail)
- 5** *Art Deco Kyoto Shibori 2,*
Gabbeks Abstract & Plain



6



9



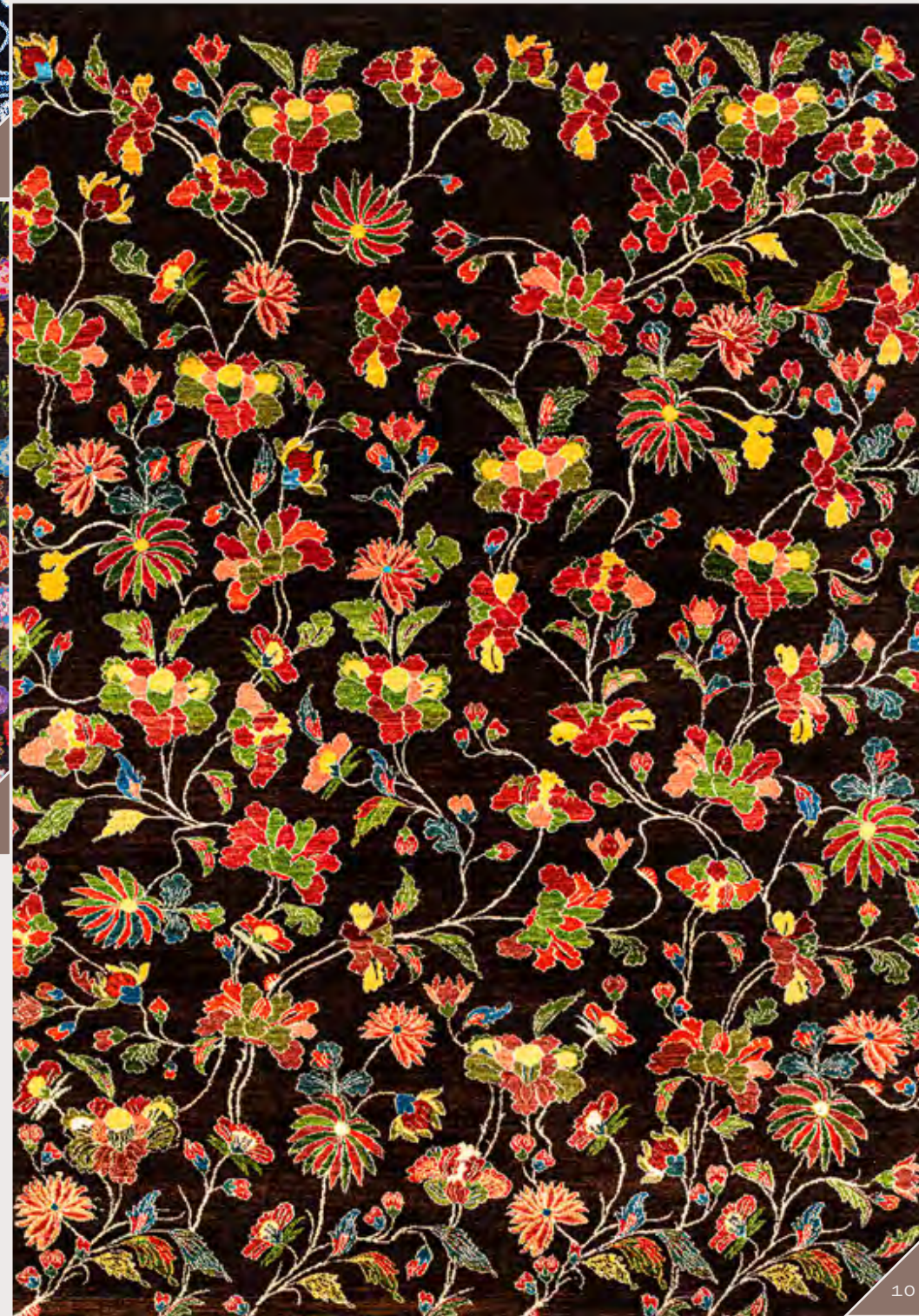
11



7



8



10

- 6 *Ikebana 5a, Kyoto Collection,*
Gabbehs Flora & Fauna
- 7 *Ikebana 1a, Kyoto Collection,*
Gabbehs Flora & Fauna
- 8 *Ikebana 1b, Kyoto Collection,*
Gabbehs Flora & Fauna
- 9 *Ikebana 6, Kyoto Collection,*
Gabbehs Flora & Fauna
- 10 *Ikebana 7, Kyoto Collection,*
Gabbehs Flora & Fauna
- 11 *Ikebana 5b, Kyoto Collection,*
Gabbehs Flora & Fauna

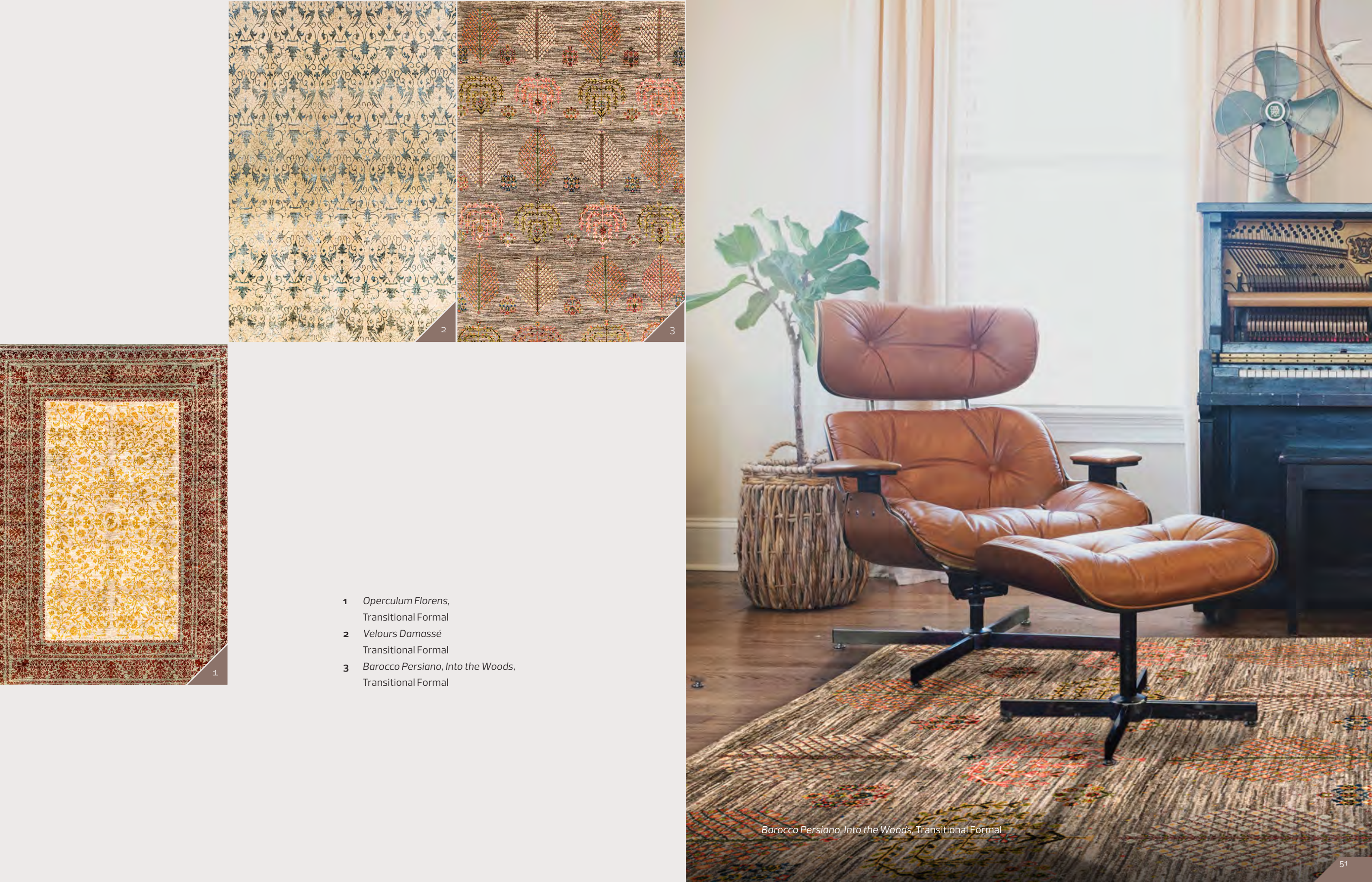


- 1 *Starfish in Blue, Underwater Collection, Gabbehs Flora & Fauna*
- 2 *Starfish in Warm Red, Underwater Collection, Gabbehs Flora & Fauna*
- 3 *Starfish in Green, Underwater Collection, Gabbehs Flora & Fauna*
- 4 *Starfish in Slate, Underwater Collection, Gabbehs Flora & Fauna*



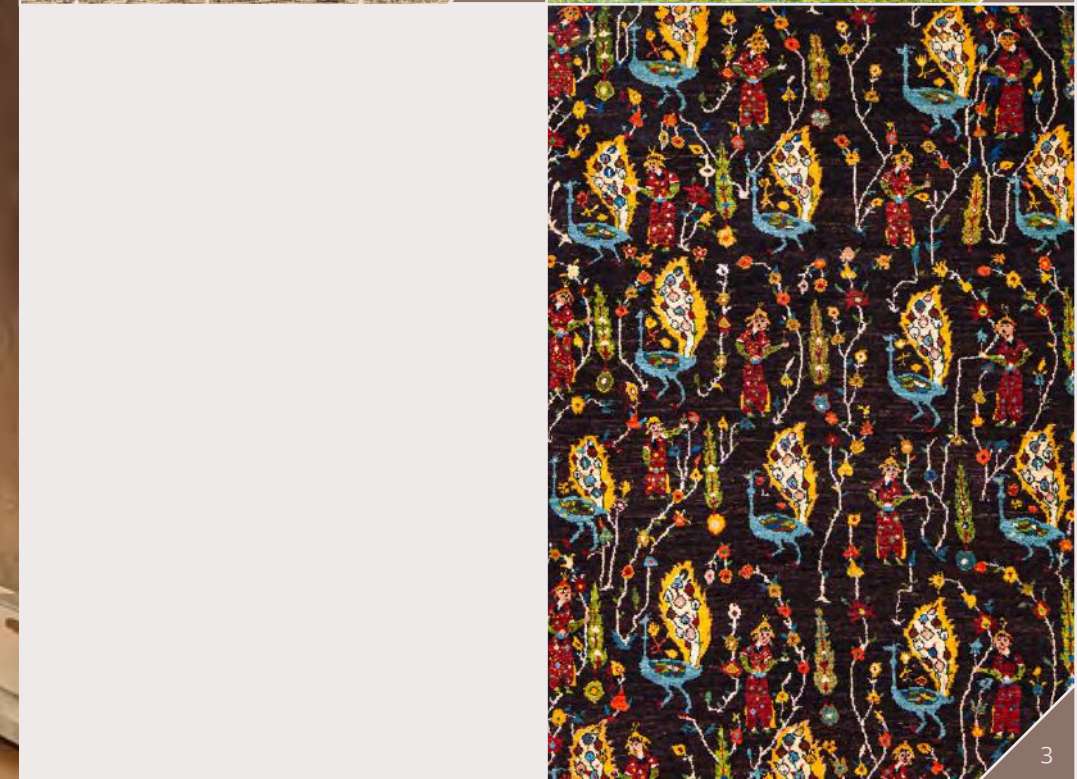
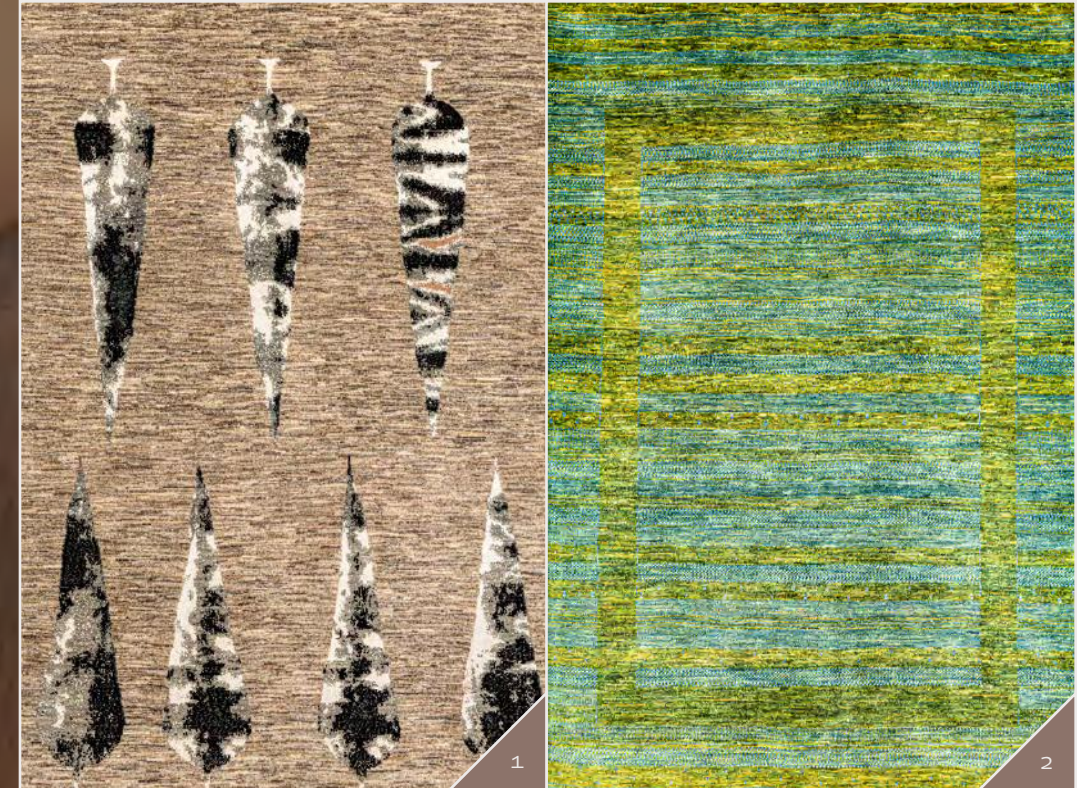
Transitionals

Our selection of Transitional carpets range from the classic Baluch Sumakhs (Tribal), a mixed-technique creation first introduced by Zollanvari to the market to the Luribaft and Bulurbaft (Formal), where we have updated the palette and design of traditional Persian village and city carpets.



- 1 *Operculum Florens*,
Transitional Formal
- 2 *Velours Damassé*
Transitional Formal
- 3 *Barocco Persiano, Into the Woods*,
Transitional Formal

Barocco Persiano, Into the Woods, Transitional Formal



- 1 *Abstract Winter Wonderland,*
Transitional Tribal
- 2 *Shimmering Persian Pond,*
Transitional Tribal
- 3 *The Prince and the Peacock,*
Transitional Tribal

Abstract Winter Wonderland, Transitional Tribal

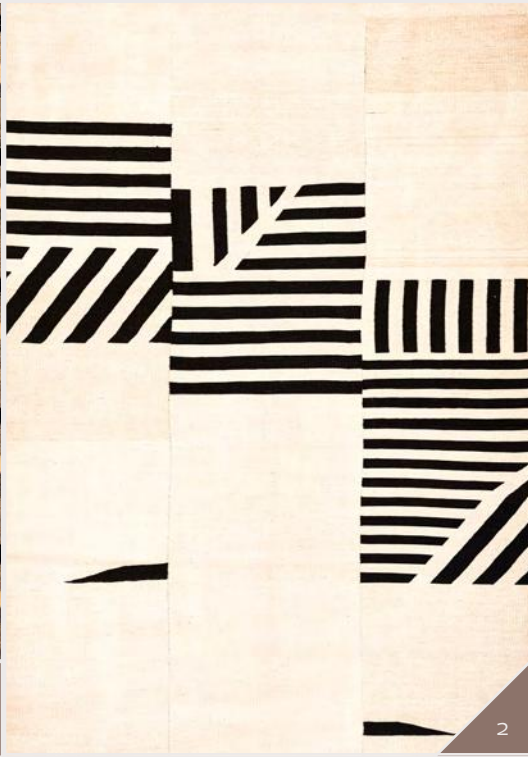


Flatweaves

Our Baneh and Mazandaran kelim collections are the jewels in the crown of our 'minimalist' Flatweaves. These kelims are highly decorative and fit easily in contemporary interiors. Our other flatweaves include kelims that are typically plain or contain classical Ghashgha'i patterns and the single colour yarn flatweaves that have embroidered silk motifs similar to Kaitag textiles (*Maryam*). Our stunningly diverse *Jajims*, *Caprino* kelims made of goat's hair, complex *Gatchmehs* and newly launched *Zillus* complete our Flatweaves Tribal and Minimalist collections.



1



2



3



4

- 1 Art Deco Diamonds, Baneh Kelim, Flatweaves Minimalist
- 2 Art Deco Foliole, Baneh Kelim, Flatweaves Minimalist
- 3 Art Deco Baldachin, Baneh Kelim, Flatweaves Minimalist
- 4 Art Deco Jigsaw, Baneh Kelim, Flatweaves Minimalist

Art Deco Foliole Baneh Kelim, Flatweaves Minimalist



5

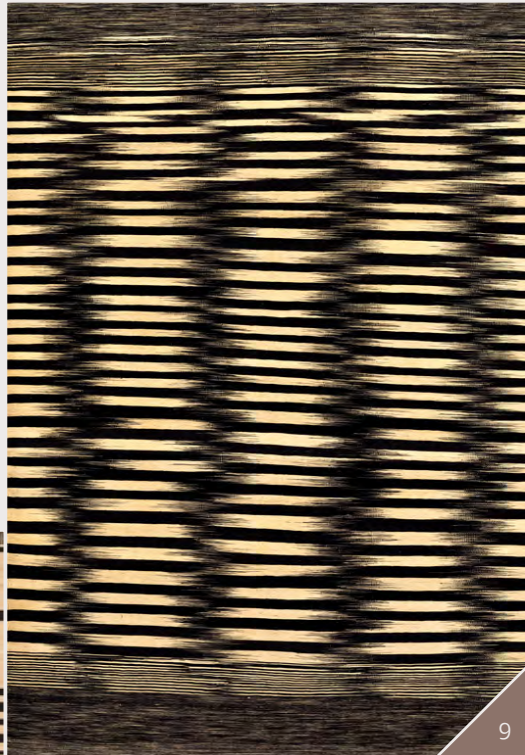


6



7

- 5 *After Navajo via Bauhaus, Baneh Kelim, Flatweaves Minimalist*
- 6 *Bauhaus meets Ghashgha'i, Baneh Kelim, Flatweaves Minimalist*
- 7 *Eye-Dazzler, Baneh Kelim, Flatweaves Minimalist*



- 8** *Baneh Kelim 10,*
Flatweaves Minimalist
- 9** *Column Baneh Ikat Kelim 4,*
Flatweaves Minimalist
- 10** *Fluidity 3b, Baneh Kelim,*
Flatweaves Minimalist
- 11** *Jagged Edge 3, Baneh Kelim,*
Flatweaves Minimalist
- 12** *Baneh Kelim 11,*
Flatweaves Minimalist



13



14



15



16

- 13** *Jagged Edge 7, Baneh Kelim, Flatweaves Minimalist*
- 14** *Zagros Songlines, Baneh Kelim, Flatweaves Minimalist*
- 15** *Jagged Edge 5, Baneh Kelim, Flatweaves Minimalis*
- 16** *Baneh Kelim gb, Flatweaves Minimalist*



Diamond Zillu in Gold & Green, Flatweaves Minimalist



- 1** *Diamond Zillu in Gold & Green, Flatweaves Minimalist*
- 2** *Diamond Zillu in Black & Cream, Flatweaves Minimalist*

Zillus

A double-sided flatweave woven in two colours on a vertical wooden loom with a highly complex weaving structure (supplementary warps and wefts). "The supplementary warp technique is a way of introducing warp patterning into a woven fabric by floating extra warps over the plain weave ground without disturbing the basic structure of the weave. The wefts are inserted along the same passage as the main weft and then worked backwards and forwards to create the design." *Zillus* are recognised as one of the most enduring of floor coverings (used by tribes in desert regions).

Woven in Iran, the Caucasus and Anatolia, *Zillu* weavings from each of these areas have their own characteristics in terms of structure, design, colour and the materials used. *Zillus* in Iran have traditionally been woven by weavers from Iran's desert cities such as Meybod, Yazd and Kashan. The motifs used in *Zillus* are geometric and abstract. Our *Zillus* are made of wool yarns instead of the traditional cotton ones and complete our innovative and extensive Flatweaves collections.

- 3 *Etched Zillu in Black & White, Flatweaves Minimalist*
- 4 *Etched Zillu in Blue & Grey Flatweaves Minimalist*
- 5 *Etched Zillu in Cream & Grey, Flatweaves Minimalist*



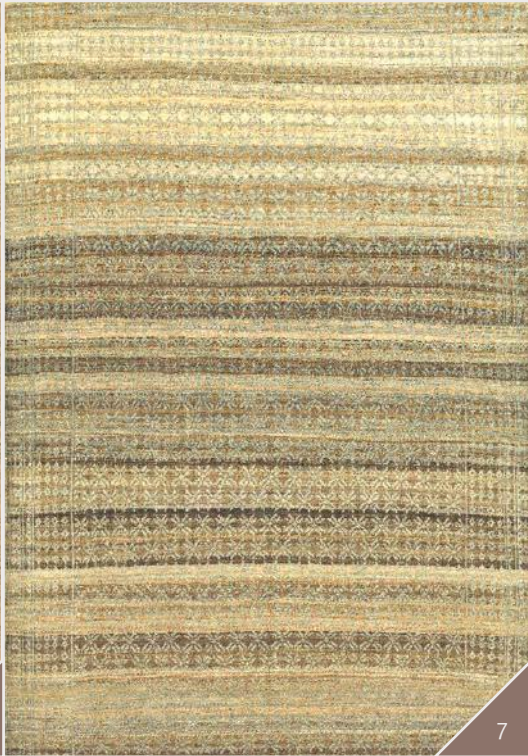


Etched Zillu in Black & White, Flatweaves Minimalist

- 6 *Floral Zillu in Cream & Blue,*
Flatweaves Minimalist
- 7 *Floral Zillu in Gold & Blue,*
Flatweaves Minimalist



6



7



Awards

Zollanvari's carpets and flatweaves win praise from buyers from all corners of the globe. The experts too continue to recognise the excellence of our carpets and flatweaves. As a result, we are delighted and proud to have been nominated for, and to have won, many awards over the years.

| | |
|-----------|--|
| 1993 | Golden Medal of the Vetega Guild |
| 1995 | Adil Besim Carpet Oscar |
| 2000 | Adil Besim Carpet Oscar |
| 2003 | Award for Distinguished Carpet Exporter/Producer of Iran |
| 2006 | Award for Distinguished Carpet Exporter/Producer of Iran |
| 2007–2018 | Carpet Design Awards at DOMOTEX HANNOVER in several categories, 16 Awards in total including Best Modern Design, Best Traditional Design, Best Formal Design, Best Innovation and Best Liked by DOMOTEX Visitors. Nominations for 2018 include Best Flatweave Design and Best Modern Design Superior |
| 2012 | EUCA* – Lifetime Achievement Award 2012 for Gholam Reza Zollanvari |
| 2012 | Living Interiors – imm Cologne |
| 2014 | Interior Innovation Award for Couture Collection – imm Cologne |
| 2014 | Award for Distinguished Carpet Exporter/Producer of Iran |
| 2015 | Special Mention Award at the German Design Awards for the Couture Collection and the Prince of Wales design |
| 2015 | Best Fars Carpet Exporter |
| 2016 | Best Fars Carpet Exporter |
| 2016/17 | OEKO-TEX® Standard 100 Certificate |
| 2017 | Special Mention Award at the German Design Awards for Glow |
| 2017 | Best Nomadic 'Antique' Collection at the Iran Handmade Carpet Exhibition |
| 2017 | Best Fars Carpet Exporter |
| 2018 | German Design Awards Winners: Zigorat Pelt and Rapture 4 and German Design Awards Special Mentions: Kyoto Art Deco 2 and Graffiti 2 |
| 2019 | Carpet Design Awards Winner: Best Modern Design Superior for <i>Spartan Plumage</i> |
| 2020 | Carpet Design Awards shortlisted for Best Flatweave Design with <i>Eye-Dazzler</i> and <i>After Navajo via Bauhaus</i> , and for Best Collection with <i>Ghashgha'i meets Bauhaus</i> |

* European Carpet-Importers Association e.V.

Zollanvari across the globe

EUROPE

Switzerland

Zollanvari AG
(Global Head Office)
Gebäude E/F, Embraport 24
CH-8424 Embrach
T +41 44 493 28 29
F +41 44 493 07 73
E zollanvari@zollanvari.ch
www.zollanvari.com

Germany

Zollanvari Teppichhandel GmbH
(Affiliate)
Am Sandtorkai 35, 2. Boden
DE -20457 Hamburg
T +49 40 736 77 860
F +49 40 736 77 865
E info@zollanvariteppich.de

USA

New Jersey

Zollanvari Ltd.
(Wholly Owned Subsidiary
of Zollanvari AG)
600 Meadowlands Parkway,
Suite 130 Secaucus, NJ 07094
T +1 201 330 33 44
F +1 201 330 77 28
E info@zollanvariusa.com

ASIA

Iran

Zollanvari Co.
(Group Headquarters)
Vakil Mosque Ave. 37
Shiraz
Postal Code 71377 57476
PO Box 73415 386
T +98 711 774 23 57/8
F +98 711 774 23 59

(Office & Warehouse)
Nr. 10 Ahmadabad Ave.
towards Vavan
End of the Hakimazadeh Blvd.
Kahrizak, Tehran
T +98 21 56 54 36 91
F +98 21 56 54 36 90

Tehran Zafar Gallery
Negin Zafar Shopping Mall,
Unit 16
Under Ground Level
In front of Zafar St
Shariati Ave
T +98 21 22 89 66 48
F +98 21 22 89 66 51

Tehran Yaft Abad Gallery
No. 3, Unit 305
Third Floor
Iran Furniture Market
T +98 21 66 19 32 06
F +98 21 66 19 32 00

Shiraz Abou Ghadar Gallery
Fars Mobilize Complex
Amir Kabir Blvd
T +98 713 831 20 05
F +98 713 831 20 05

Shiraz Vakil Bazar Gallery
No33, Beside the Vakil Mosque
Vakil Bazar
T +98 713 224 18 28
F +98 713 223 78 83

Shiraz Safa Garden Gallery
First of Western Coastal
Safa Garden Bridge
T +98 713 32 26 30 30
F +98 713 32 26 32 53

Kish Island Gallery
No 22 Damoun Shopping Centre
T +98 76 44 45 98 59

Japan

Carpet Gallery Co. Ltd.
(Affiliate)
Kobe Fashion Mart 3F
6-9 Kouyou-cyo naka
Higashina-da-ku
Kobe-City, Hyogo
T +81 78 857 0415
F +81 78 857 0441
E okuma@carpet-gallery.co.jp
www.carpetandrug.net

China

Zollanvari Co. Ltd.
(Wholly Owned Subsidiary
of Zollanvari AG)
Bafang Road
No. 1 Dongxihu
Wuhan, Hubei
M +861 852 155 25 92
E raminz@zollanvari.ch,
1297195743@qq.com
Skype [ramin.zollanvari1](#)

AFRICA

South Africa

Zollanvari Persian Gallery
(Affiliate)
31 Vineyard Road,
Claremont Kapstadt
T +27 21 683 6364
F +27 21 683 5664
E enquiries@zollanvari.co.za

All the designs published in this
catalogue are copyright registered
by Zollanvari International and are
our sole property. All rights reserved
2020 © Zollanvari AG
Gebäude E/F, Eingang F3, 4. Stock
Embraport 24
CH-8424 Embrach
Switzerland

Concept & Design
Anikst Design, London
In association with
FSG Marketing & Publishing

Photography
Parviz Falahatkar,
Kamyar Sheissi,
Tukestan Barcelona,
Zollanvari AG



WWW.ZOLLANVARI.COM
Creators of Carpet Art