

AFK
living



Catalogue
2021

The Company.

creating rugs for the family, fitting a modern lifestyle, respectful of the environnement.

Ten years ago, Emmanuelle Toché was guided by her desire to create a house brand specializing in rugs. Around values such as family, encounters and authenticity, the designer develops a reassuring and embodied universe, intended to inhabit beautiful interiors. From the start, its customers were quickly seduced by its colorful brand environment and its pure forms, combining utility and aesthetics.

AFKliving rug collection fits all types of modern apartments. Each of its collections referring to a trip is linked to ancestral know-how. (Belgium, India, Morocco, ...) The feeling of well-being and happy mood is characteristic of the brand. The intimate and warm atmosphere that emanates from it has the particularity of comforting and providing conviviality.

AFKliving creates various collections aimed to different usage and purpose while purchasing a new rug: there are unique pieces made by hand, real works of art that can be passed down over several generations. On the other hand, they are objects linked to everyday life accompanying family day to day life and play, even in children's rooms.

Using environmentally friendly materials to give pride to the creation, the house spirit blends into the Scandinavian Hygge spirit that focuses on comfort, family and well-being.

Almost a philosophy of life ! All at affordable prices.

Discover our new collection that we created with passion !

zoom on the creator

Emmanuelle Toché has always evolved in an artistic environment. The branches of her family tree are hung by painters, musicians and ardent collectors of carpets.

"Teenage girl, I wanted to create, draw, be an artist!". A little girl's dream that she will not forget. In the first part of his professional life, Emmanuelle is moving towards marketing and communication, embracing, during fifteen years, a career in large companies around the world. She lives in Asia, India, the United States. Her interest for Art and Creation grew bigger while discovering local crafts.

On her return, the Globetrotter discovers a new planet by becoming a mother. "I wanted softness, simplicity, harmony including in the decoration of my home." This change of life prompts her to abandon her former profession "Thanks to this past experience, I have been able to combine my artistic fiber with the ability to manage a company." Then, she started creating rugs for kids and their parents..

The sources of her inspiration? Her travels, her penchant for art, design, Scandinavian decor and Paris where she was born. What matter most? "Wellness, family Cocoon and zero stress."



CONTENT

NEW COLLECTION / HOME - GRAPHIC.....	6
permanent collection / home - GRAPHIC.....	22
NEW COLLECTION / HOME - ETHNIC.....	26
permanent collection / home - ETHNIC.....	32
NEW COLLECTION / HOME - SCANDI.....	34
permanent collection / home - SCANDI.....	38
CUSTOM MADE - BERBER RUGS.....	42
NEW COLLECTION / KIDS.....	60
permanent collection/kids.....	80
RUG COLLECTION / VISUAL INDEX.....	92



GRAPHIC

INDOOR
& OUTDOOR

Diatonic is a timeless and refined design. A two-tone diamond shape rug featuring fine stripes lines on a plain background.

material: velvet-effect flat-woven synthetic fiber.
Warm, soft colours. Handmade look and feel.
Indoor/outdoor rugs. Easy to clean
Material quality : A+
pile height 4mm, weight g/m2 : 1450, 96.000 knots



Diatonic /pearl grey - TAP113



Diatonic /marine blue - TAP114



GRAPHIC

INDOOR
& OUTDOOR

Rhythm is a swirling two-tone design whereas Tempo is pure geometric. Both rugs are an homage to the Art Deco era.

material: velvet-effect flat-woven synthetic fiber.
Warm, soft colours. Handmade look and feel.
Indoor/outdoor rugs. Easy to clean
Material quality : A
pile height 4mm, weight g/m2 : 1450, 96.000 knots



Rhythm/marine blue - TAP115



Tempo / sand beige - TAP116



GRAPHIC



An abstract, sophisticated design on a robust and ultra-soft rug. This glamorous rug brings comfort and softness to your home.

materials: A very soft rug with at twisted and glowing yarn
Synthetic yarn, easy to clean.
Material quality : A+
PP HS fris . pile height 17.5mm, weight g/m2 : 2900,
168.000 points



Sequence/grey - TAP102



Sequence/sand beige - TAP103



Sequence/sage green - TAP104



GRAPHIC

ULTRA
SOFT

Iris is a hypnotic yet tranquil design.
This luxurious round shape rug is ultra-soft and comfortable.

materials: A very soft rug with at twisted and glowing yarn
Synthetic yarn, easy to clean.
Material quality : A+
PP HS fris . pile height 17.5mm, weight g/m2 : 2900,
168.000 points



Iris/silver - TAP108



Iris/grey - TAP109



GRAPHIC

ULTRA
SOFT

Abstract, sophisticated and decorative,
this vintage look rug comes in three
colors to fit all kind of interiors.

materials: A very soft rug with at twisted and glowing yarn
Synthetic yarn, easy to clean.
Material quality : A+
PP HS fris . pile height 17.5mm, weight g/m2 : 2900,
168.000 points



Vintage faded/silver - TAP105



Vintage faded/nude rose - TAP106



Vintage faded/peacock blue - TAP107



GRAPHIC

INDOOR
& OUTDOOR

Antique is an homage to the famous Royal Manufacture of Aubusson who produced exquisite rugs in France since the XVe century.

material: velvet-effect flat-woven synthetic fiber.
Warm, soft colours. Handmade look and feel.
Indoor/outdoor rugs. Easy to clean
Material quality : A
pile height 4mm, weight g/m2 : 1450, 96.000 knots



Antique/dark grey- TAP112



new collection/home

GRAPHIC

Colourfast
non-shedding
durable

Traditional 19th century ornaments revisited with contemporary colors and a delicate distressed effect make this design a trendy eye-catcher. This collection is characterized by retro accents and modern design.

materials: machine tufted synthetic fiber. Unique colours following the latest trends. Easy care product : Easy to clean, Water repellent, Antistatic, Anti-bacterial, Colourfast..
Material quality : A+
PP HS, pile height 11.5mm, weight g/m2 : 1650, 256.000 points.



Vintage faded Floral/silver
TAP97



Vintage faded Floral/royal blue
TAP98



Vintage faded Floral/honey-
TAP99



GRAPHIC

Colourfast
non-shedding
durable

Peacock is a bold rug with a floral pattern directly inspired by the roaring twenties avant-garde decade.

materials: machine tufted synthetic fiber. Unique colours following the latest trends. Easy care product : Easy to clean, Water repellent, Antistatic, Anti-bacterial, Colourfast..
Material quality : A+
PP HS, pile height 11.5mm, weight g/m2 : 1650, 256.000 points.



Peacock- TAP96



GRAPHIC

Colourfast
non-shedding
durable

materials: machine tufted synthetic fiber. Unique colours following the latest trends. Easy care product : Easy to clean, Water repellent, Antistatic, Anti-bacterial, Colourfast..
Material quality : A+
PP HS, pile height 11.5mm, weight g/m2 : 1650, 256.000 points.



Dashed - TAP72



Art Deco - TAP70



Tie and Die - TAP59

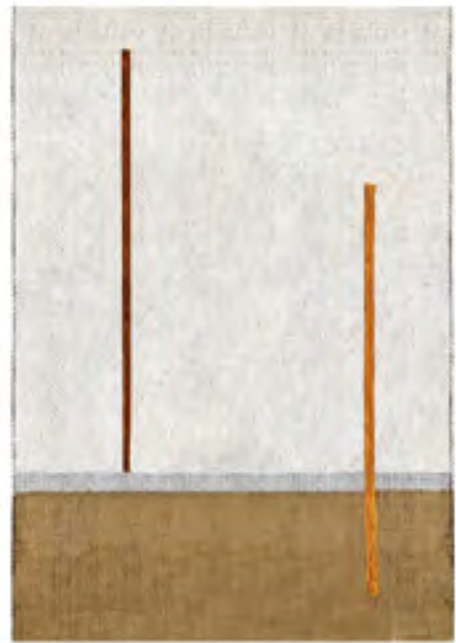
GRAPHIC

NATURAL
FIBERS

HANDWOVEN RUGS JUTE, COTTON, LINEN

Handmade by our artisans in India, these rugs combine a mix of natural fibers to create a unique piece for Home.

Eco-friendly woven rug using natural fibers and a non-toxic dyeing process.



Atlas- TAP81



Chevron II- TAP80



ETHNIC

INDOOR
& OUTDOOR

Indulge in the ethnic chic deco trend with this creative design featuring tribal patterns.

material: velvet-effect flat-woven synthetic fiber.
Warm, soft colours. Handmade look and feel.
Indoor/outdoor rugs. Easy to clean
Material quality: A
pile height 4mm, weight g/m2 : 1450, 96.000 knots



Kalimba/blue - TAP111



Kalimba/grey - TAP110



ETHNIC

Sanza is an original ethnic-inspired rug in raw natural jute mixed with synthetic yarn. The fringes on each side accentuate the nomadic spirit.

RAW JUTE

materials: Jute combined with synthetic yarn.
Raw fiber-effect flat-woven synthetic fiber.
Indoor rugs. Easy to clean
Material quality: A

Sisal. pile height 3mm, weight g/m2 : 1450, 96.000 knots.



Sanza with fringes - TAP88



ETHNIC

A delicate and soothing design with ethnic accents for this original round rug.

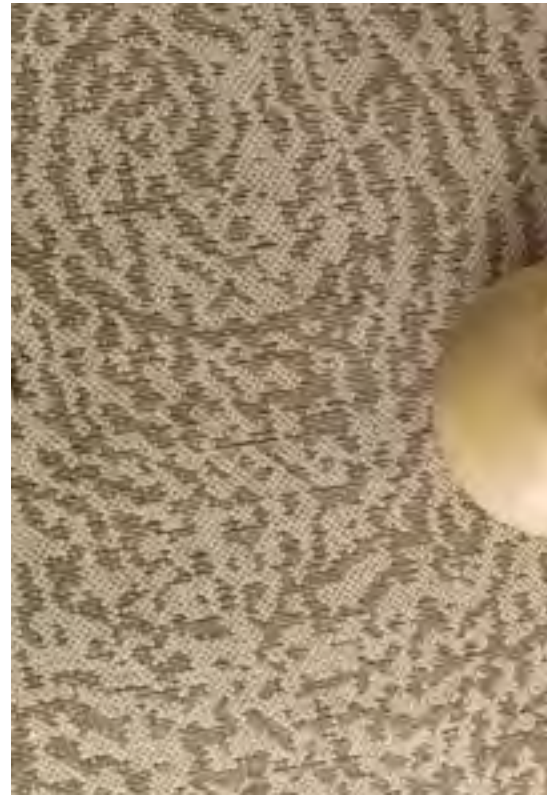
RAW JUTE

materials: Jute combined with synthetic yarn.
Raw fiber-effect flat-woven synthetic fiber.
Indoor rugs. Easy to clean
Material quality: A

Sisal. pile height 3mm, weight g/m2 : 1450, 96.000 knots.



Zenko - TAP82



ETHNIC

SHAGGY

materials: Shaggy berber style rug in synthetic wool.
Easy care product : Easy to clean, Water repellent, Antistatic,
Anti-bacterial, Colourfast..
Material quality : A+
PP HS fris , pile height 35mm, weight g/m2 : 2500,
72.000 points.



Fez - TAP60



Marrakech - TAP61



Tanger - TAP71



Nomad - TAP32



new collection/home

SCANDI

Abstract and hypnotic, the Illusion round rug is a two-tone statement piece that will cheer a room.

INDOOR
& OUTDOOR

material: Two-tone rugs with a Sisal look.
Flat-woven. Indoor and outdoor rugs. Synthetic yarn,
easy to clean.
Material quality : A
Sisal, pile height 3mm, weight g/m2 : 1150,
96.000 knots



Illusion/midnight blue - TAP86



Illusion/honey - TAP87



SCANDI

Indulge in the Scandinavian nature-inspired way of life with this flat-woven braided rug.

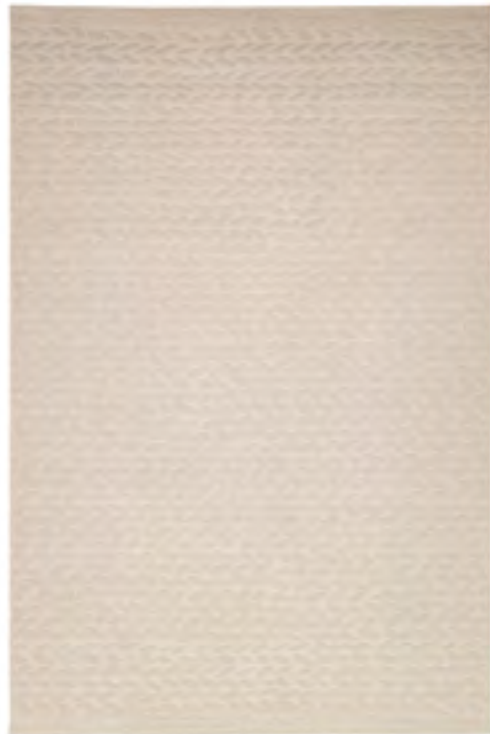
INDOOR
& OUTDOOR

The texture of this rug is comparable to that of a hand-knitted sweater. A thick yarn associated with a flat surface creating a high and low effect. Soft, natural, and soothing colour palette.

Indoor and outdoor rugs. Synthetic yarn, easy to clean.

Material quality : A+

Sisal, pile height 4mm, weight g/m² : 1550,
96.000 knots



Braided rug leaves/beige
TAP83



Braided rug leaves/blush rose
TAP84



Braided rug leaves/grey
TAP85



SCANDI

INDOOR
& OUTDOOR

The texture of this rug is comparable to that of a hand-knitted sweater. A thick yarn associated with a flat surface creating a high and low effect. Soft, natural, and soothing colour palette.

Indoor and outdoor rugs. Synthetic yarn, easy to clean.

Material quality : A+

Sisal, pile height 4mm, weight g/m² : 1550,
96.000 knots



Crochet/beige
TAP52W



Crochet/blush rose
TAP52P



Crochet/grey
TAP52G



SCANDI

NATURAL
FIBERS

Handmade by our artisans in India, these rugs combine a mix of natural fibers to create a unique piece for home. Eco-friendly woven rug using natural fibers and a non-toxic dyeing process.



Kilim Triangles- TAP22B



Kilim Birds- TAP20

Custom made / berber rugs

HANDMADE 100% NEW ZEALAND RUGS

Select the design that you like from our collection or from your own design bank. Any size is possible. Our artisans will then carefully produce your custom made rug in 6 to 8 weeks.



Berber rugs

**CUSTOM
MADE**



Berber rugs

**CUSTOM
MADE**



Berber rugs

**CUSTOM
MADE**



Berber rugs

**CUSTOM
MADE**



TAP_MAR_2020_007

Berber rugs

**CUSTOM
MADE**



Berber rugs

**CUSTOM
MADE**



Berber rugs

**CUSTOM
MADE**



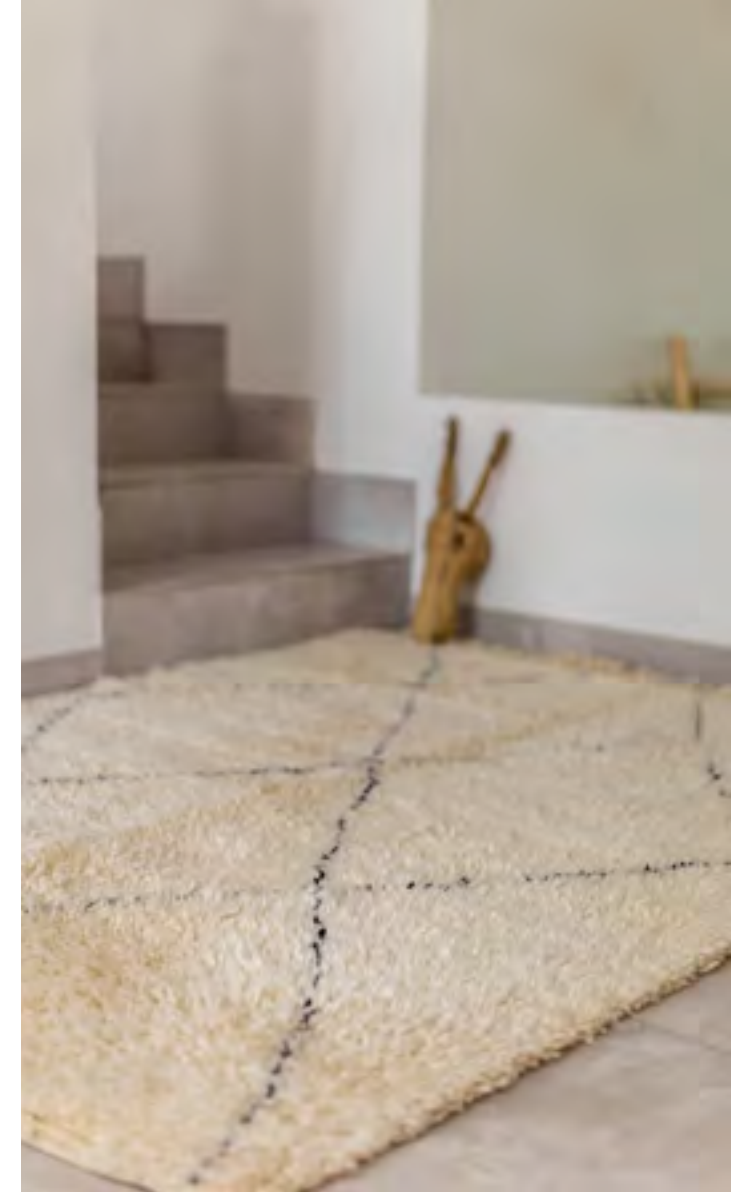
TAP_MAR_2020_012



TAP_MAR_2020_013



TAP_MAR_2020_014



TAP_MAR_2020_015

Berber rugs

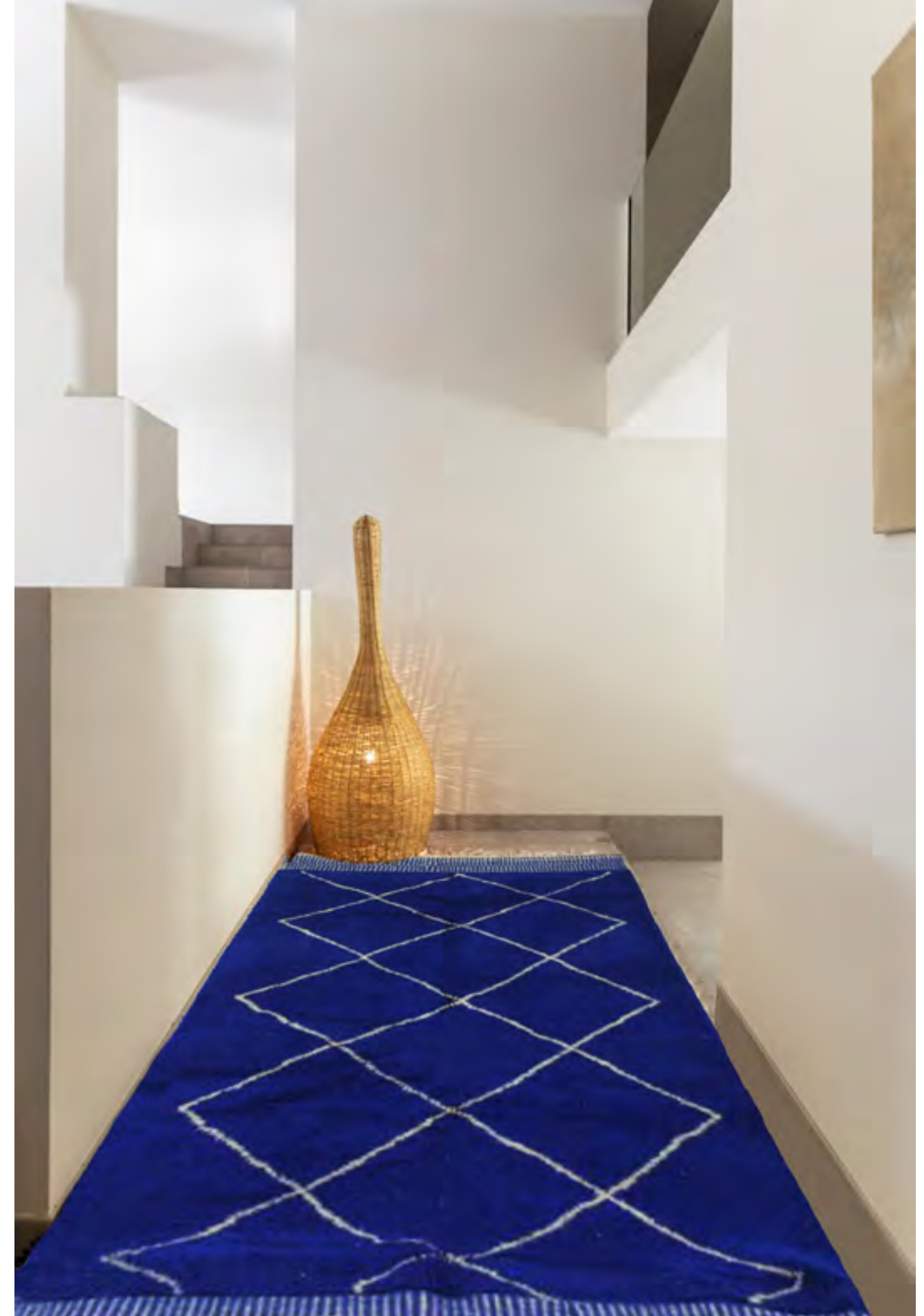
**CUSTOM
MADE**



TAP_MAR_2020_016



TAP_MAR_BO01

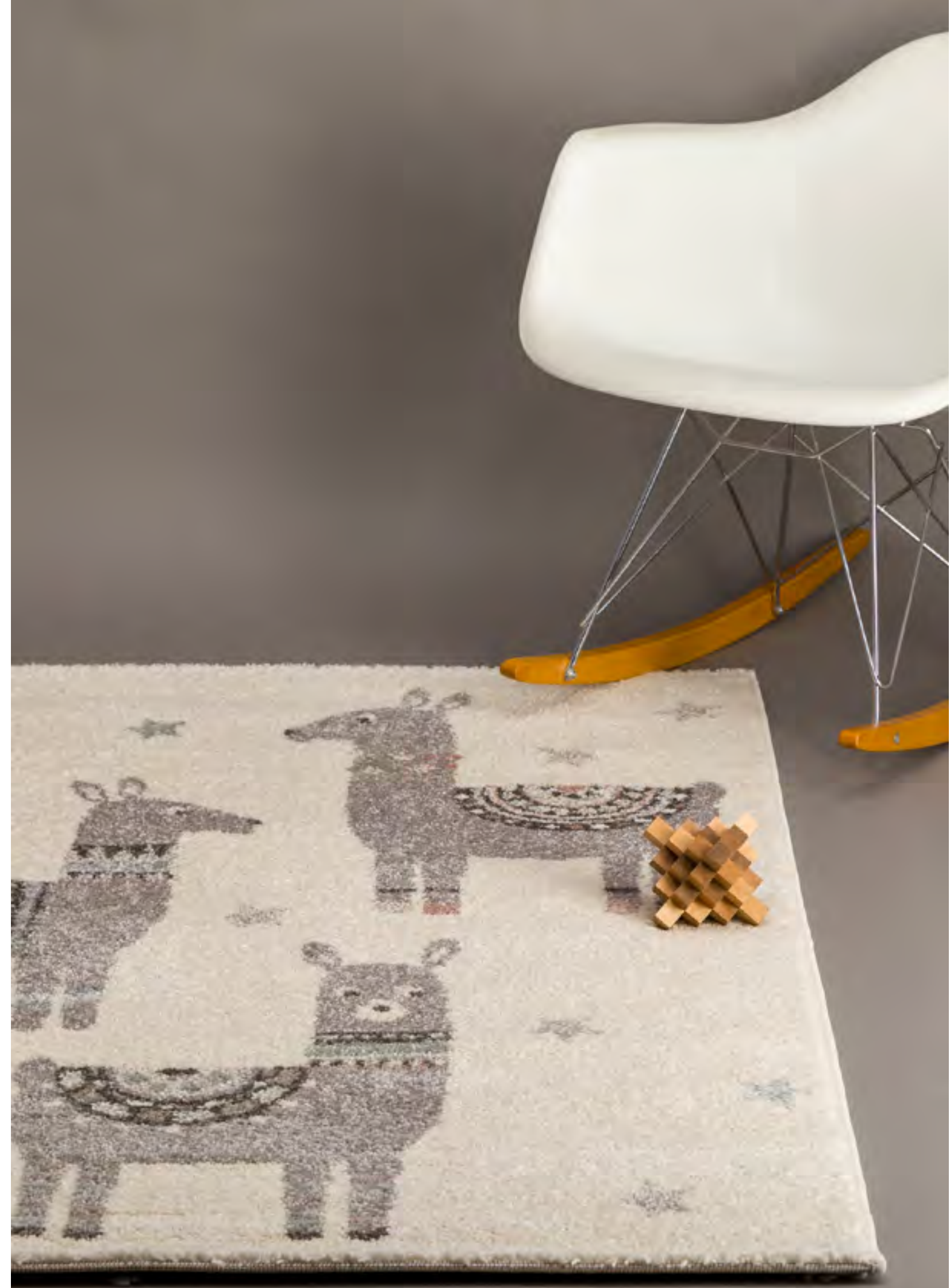


TAP_MAR_AZ04

NEW KIDS RUG COLLECTION MADE IN BELGIUM

Because the children are creative, audacious, intuitive, passionate, we create the room of their dreams based on their imagination... with an uncluttered design that also please their parents.

Discover our new kids rug collection that we created with love !



JUNGLE

SHAGGY

materials: Shaggy berber style rug in synthetic wool.
Easy care product : Easy to clean, Water repellent, Antistatic,
Anti-bacterial, Colourfast..
Material quality : A+
PP HS fris , pile height 35mm, weight g/m2 : 2500,
72.000 points.



Tiger - TAP90



Zebra - TAP91



JUNGLE

Colour-
fast
non-shedding
durable

materials: machine tufted synthetic fiber. Unique colours following the latest trends. Easy care product : Easy to clean, Water repellent, Antistatic, Anti-bacterial, Colourfast..
Material quality : A+
PP HS, pile height 11.5mm, weight g/m2 : 1650, 256.000 points.



Lion - TAP95



JUNGLE

ULTRA
SOFT

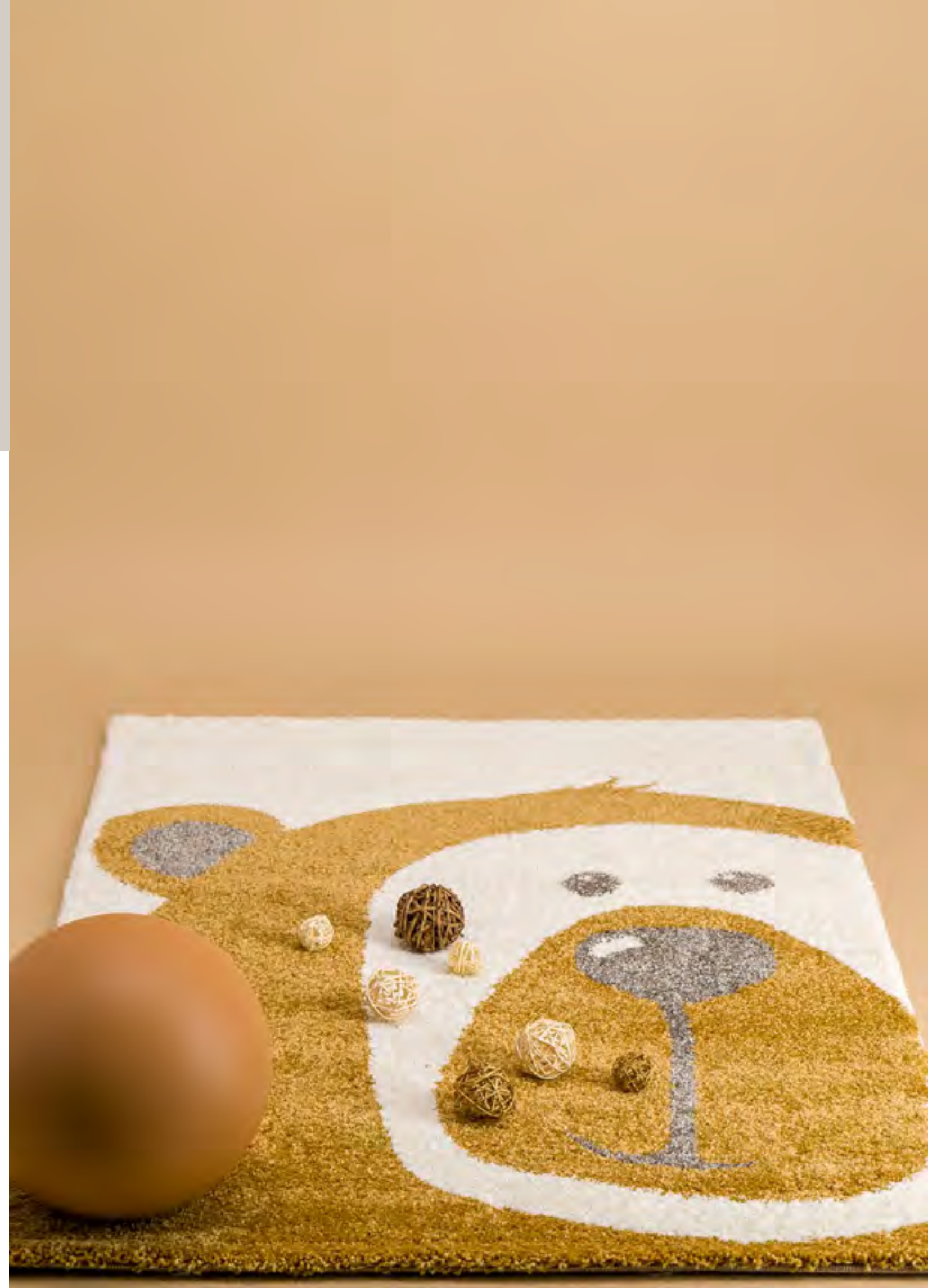
materials: A very soft rug with at twisted and glowing yarn
Synthetic yarn, easy to clean.
Material quality : A+
PP HS fris . pile height 17.5mm, weight g/m2 : 2900,
168.000 points



Teddy bear/dusty grey - TAP100



Teddy bear/honey - TAP101



JUNGLE

Colour-
fast
non-shedding
durable

materials: machine tufted synthetic fiber. Unique colours following the latest trends. Easy care product : Easy to clean, Water repellent, Antistatic, Anti-bacterial, Colourfast..
Material quality : A+
PP HS, pile height 11.5mm, weight g/m2 : 1650, 256.000 points.



Fawn/cream - TAP93



Fawn/sienna - TAP94



LLAMAS

Colour-
fast
non-shedding
durable

materials: PP heat set.
soft, durable, colourfast, non-shedding, moth proof and easy
to clean rug
quality: A+ (256.000 points/sqm).



Little Llamas - TAP117



Round fantasy rug - TAP118



TERRAZZO

SHAGGY

materials: Shaggy berber style rug in synthetic wool.
Easy care product : Easy to clean, Water repellent, Antistatic,
Anti-bacterial, Colourfast..
Material quality : A+
PP HS fris , pile height 35mm, weight g/m2 : 2500,
72.000 points.



Shaggy rug Terrazzo - TAP89



PRINTED COTTON

HANDMADE

AFKliving's printed cotton rugs are produced in India. They are handmade by our artisans. First the cotton base is handwoven, then each colors is applied manually.

This rug production is eco-friendly using natural material like cotton and a non-toxic dying process. Easy care product : handwash in tempered water to clean the rug



Alphabet round/terracotta - TAP77T



Alphabet round/beige - TAP77B



Alphabet/gery - TAP76G

PRINTED COTTON

HANDMADE



Berber/beige - TAP73W



Berber/pink - TAP73P



Berber/blue - TAP73B



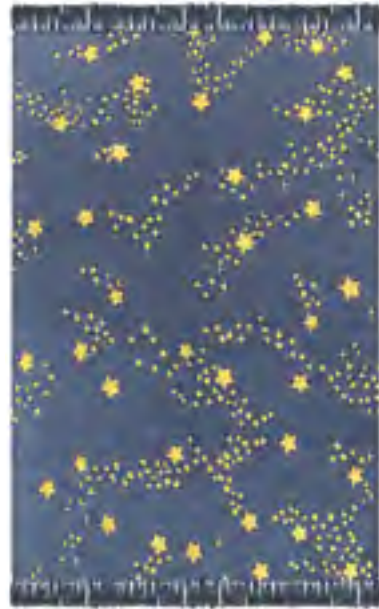
new collection/kids

PRINTED
COTTON

HANDMADE



Tribal 1 - TAP75M1



Starry night - TAP74G



Tribal 2 - TAP75M2



PLAY

Colour-
fast
non-shedding
durable

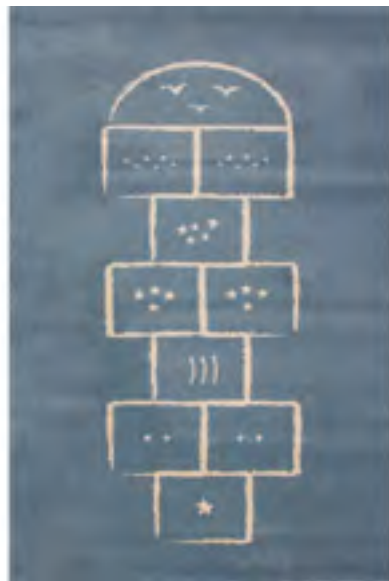
materials: machine tufted synthetic fiber. Unique colours following the latest trends. Easy care product : Easy to clean, Water repellent, Antistatic, Anti-bacterial, Colourfast..
Material quality : A+
PP HS, pile height 11.5mm, weight g/m2 : 1650, 256.000 points.



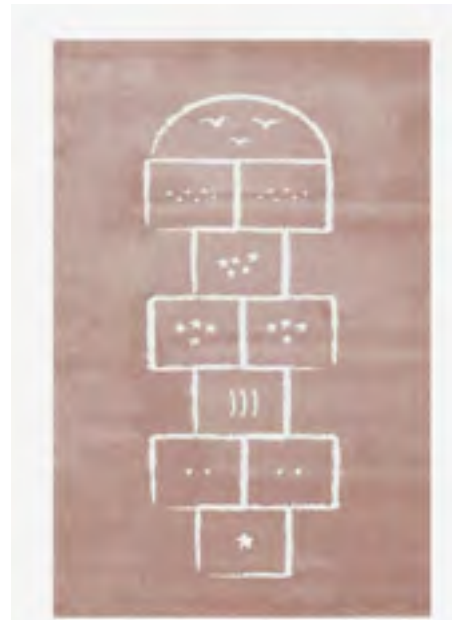
Race Track/blue - TAP67



Race Track/multi - TAP43



Hopscotch/blue - TAP31B



Hopscotch/pink - TAP31P

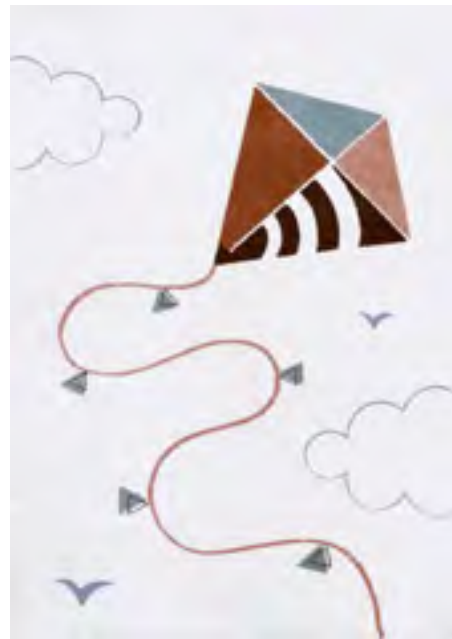
DREAM

Colour-
fast
non-shedding
durable

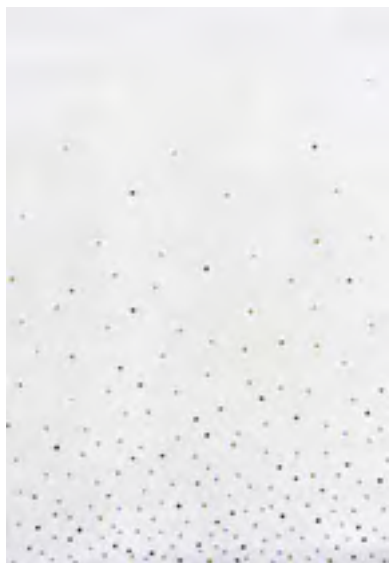
materials: machine tufted synthetic fiber. Unique colours following the latest trends. Easy care product : Easy to clean, Water repellent, Antistatic, Anti-bacterial, Colourfast..
Material quality : A+
PP HS, pile height 11.5mm, weight g/m2 : 1650, 256.000 points.



Rainbow - TAP58



Kite - TAP66



Confettis/multi - TAP64M



Confettis/pink - TAP64P



STARS

Colour-
fast
non-shedding
durable

materials: machine tufted synthetic fiber. Unique colours following the latest trends. Easy care product : Easy to clean, Water repellent, Antistatic, Anti-bacterial, Colourfast..
Material quality : A+
PP HS, pile height 11.5mm, weight g/m2 : 1650, 256.000 points.



Constellation/grey - TAP30G



Constellation/pink - TAP30P



Nova round/yellow - TAP38M



Nova round/pink - TAP38PM



ANIMALS

HANDMADE

HANDTUFTED POLYCOTTON

The children will enjoy finding the animals of the jungle hidden in this multicoloured rug.
AFKliving's Polycotton Rugs are soft and resistant to everyday use.
Eco-friendly handmade rug using a non-toxic dyeing process.



Puzzle animals - TAP1B



NOMAD

SHAGGY

materials: Shaggy berber style rug in synthetic wool.
Easy care product : Easy to clean, Water repellent, Antistatic,
Anti-bacterial, Colourfast..
Material quality : A+
PP HS fris , pile height 35mm, weight g/m2 : 2500,
72.000 points.



Nomad/beige - TAP32W



Nomad/pink - TAP32P



Nomad/blue - TAP32B



ANIMALS

Colour-
fast
non-shedding
durable

materials: machine tufted synthetic fiber. Unique colours following the latest trends. Easy care product : Easy to clean, Water repellent, Antistatic, Anti-bacterial, Colourfast..
Material quality : A+
PP HS, pile height 11.5mm, weight g/m2 : 1650, 256.000 points.



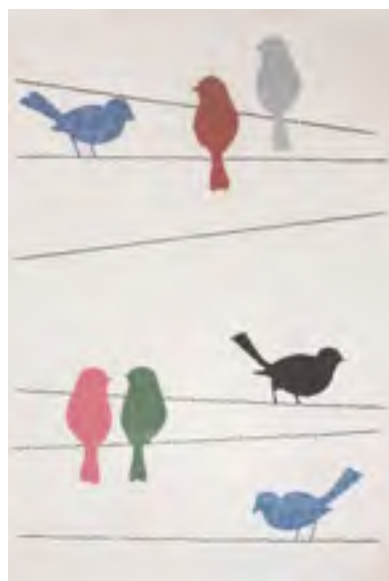
Fox - TAP39



Puzzle Forest - TAP68



Footprints - TAP14



Tweet - TAP44N



VISUAL INDEX

new collection/home



Diatonic /pearl grey - TAP113



Diatonic /marine blue - TAP114



Rhythm/marine blue - TAP115



Tempo / sand beige - TAP116



Antique/dark grey- TAP112



Vintage faded Floral/silver - TAP97



Vintage faded Floral/royal blue - TAP98



Vintage faded Floral/honey - TAP99



Sequence/grey - TAP102



Sequence/sand beige - TAP103



Sequence/sage green - TAP104



Iris/grey - TAP109



Peacock- TAP96



Kalimba/blue - TAP111



Kalimba/grey - TAP110



Sanza with fringes - TAP88



Zenko - TAP82



Vintage faded/silver - TAP105



Vintage faded/nude rose- TAP106



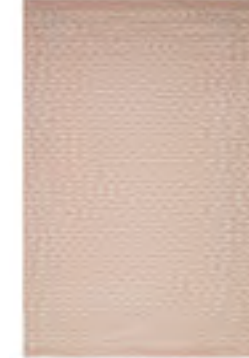
Vintage faded/peacock blue - TAP107



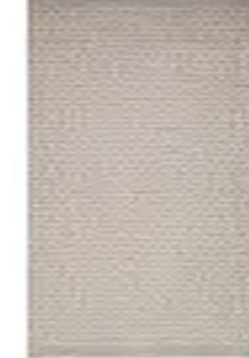
Iris/silver - TAP108



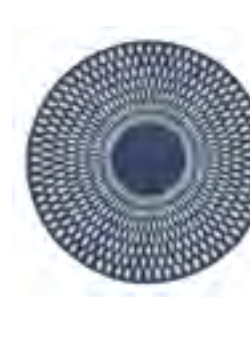
Braided rug leaves/beige- TAP83



Braided rug leaves/blush rose- TAP84



Braided rug leaves/grey- TAP85



Illusion/midnight blue - TAP86



Illusion/honey - TAP87

VISUAL INDEX

Handmade Berber Rug

permanent collection/home



Tie and Die - TAP59



Art Deco - TAP70



Scandi - TAP35



Dashed II - TAP72



Crochet - TAP52G



Fez - TAP60



Tanger - TAP71



Nomad - TAP32W



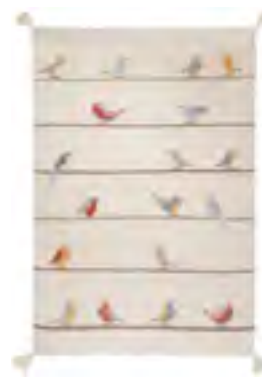
Marrakech - TAP61



Crochet - TAP52W



Triangles - TAP22B



Triangles - TAP22B



Chevron II - TAP80



Atlas - TAP81



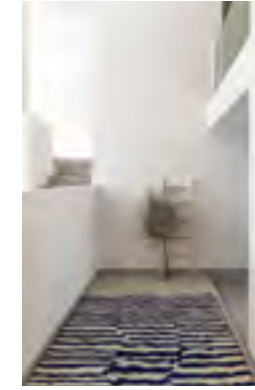
Crochet - TAP52P



TAP_MAR_2020_001



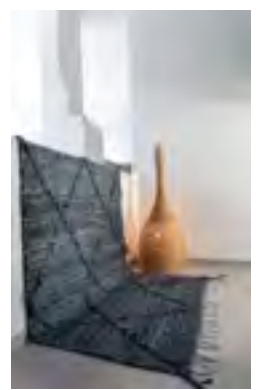
TAP_MAR_2020_002



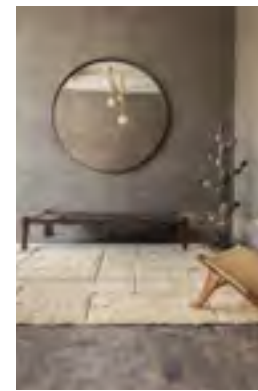
TAP_MAR_2020_003



TAP_MAR_2020_004



TAP_MAR_2020_005



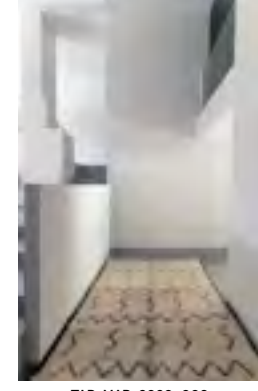
TAP_MAR_2020_006



TAP_MAR_2020_007



TAP_MAR_2020_008



TAP_MAR_2020_009



TAP_MAR_2020_010



TAP_MAR_2020_011



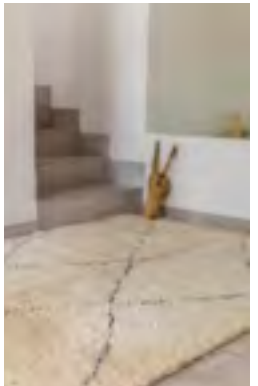
TAP_MAR_2020_012



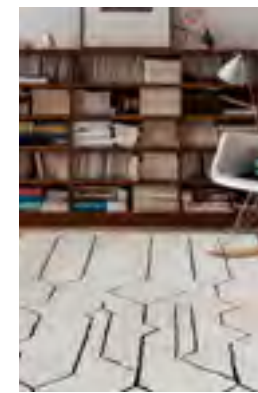
TAP_MAR_2020_013



TAP_MAR_2020_014



TAP_MAR_2020_015



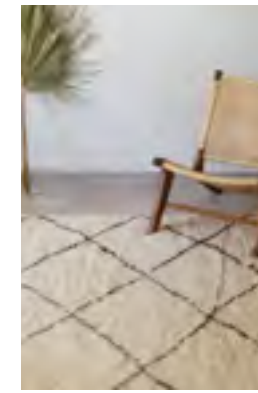
TAP_MAR_BO01



TAP_MAR_BO02



TAP_MAR_BO03



TAP_MAR_2020_016



TAP_MAR_AZ04

new collection/kids



Fawn/cream - TAP93



Fawn/sienna - TAP94



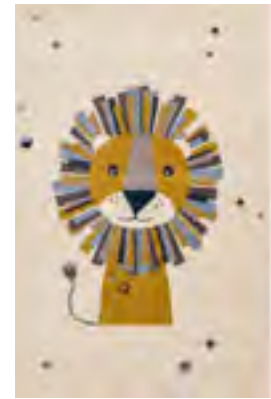
Tiger - TAP90



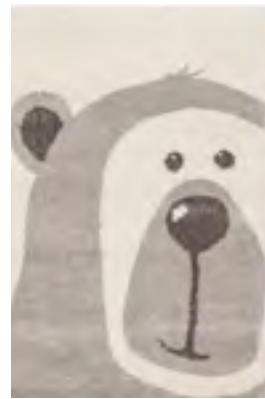
Zebra - TAP91



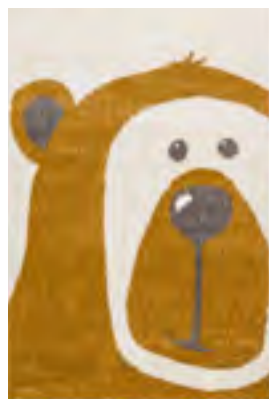
Shaggy rug Terrazzo - TAP89S



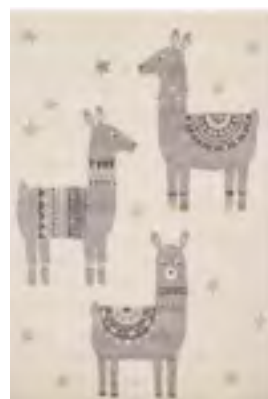
Lion - TAP95



Teddy bear/grey - TAP100



Teddy bear/honey - TAP101



Little Lamas - TAP117



Kids
collection
2021



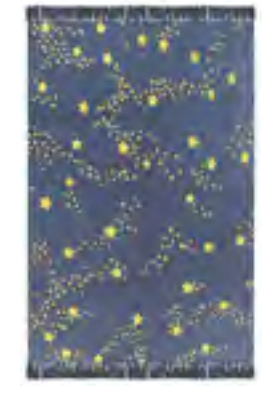
Berber - TAP73W



Berber - TAP73P



Berber - TAP73B



Starry night - TAP74G



Round fantasy rug - TAP118



Tribal - TAP75M1



Tribal - TAP75M2



Alphabet - TAP76G



Alphabet - TAP77B



Alphabet - TAP77B

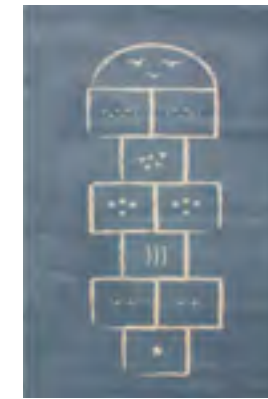
permanent collection/kids



Race Track/blue - TAP67



Race Track/multi - TAP43



Hopscotch/blue - TAP31B



Hopscotch/pink - TAP31P



Nomad/blue - TAP32B



Rainbow - TAP58



Kite - TAP66



Confettis/multi - TAP64M



Confettis/multi - TAP64M



Nomad/pink - TAP32P



Constellation/grey - TAP30G



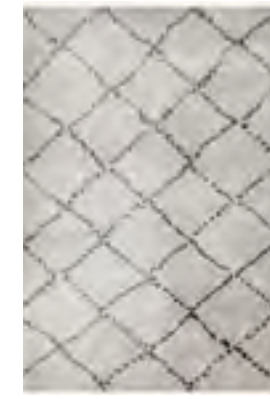
Constellation/pink - TAP30P



Nova round/yellow - TAP38M



Nova round/pink - TAP38PM



Nomad/beige - TAP32W



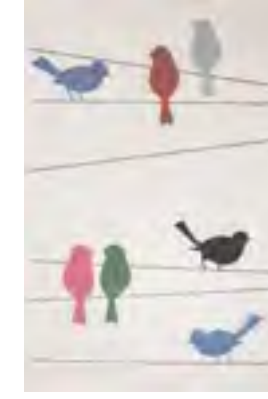
Fox - TAP39



Puzzle Forest - TAP68



Footprints - TAP14



Tweet - TAP44N



Puzzle animals - TAP1B



AFK
living

115, rue de l'Abbé Groult - 75015 Paris - FRANCE

contact@afkliving.com

www.afkliving.com

