
FUNZIONARTE

PATRIZIA CORVAGLIA

design art





FUNZIONARTE

ROMANESCO	4
DISCOSOMA	10
ANIMALIA	16
NATURA	24
ARBOR	32
Ti.Ti.	38
POMI	48
VARCO	62
GENUS	68
LINEA	78
APPLIQUE LINEA	84
TABULA	88
FUNZIONARTE LIVE	94



ROMANESCO

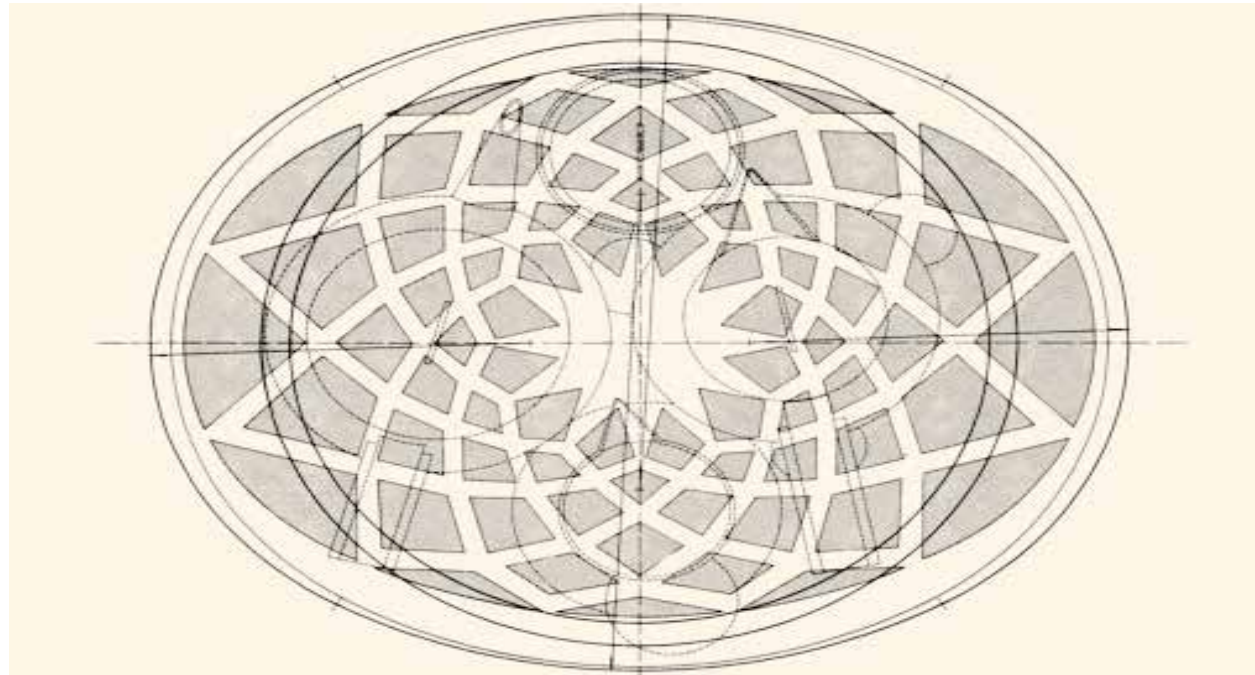
BROCCOLO ROMANESCO is a mathematics complex example applied to biology, the *broccolo* called all over the world is typical of the Roman area.

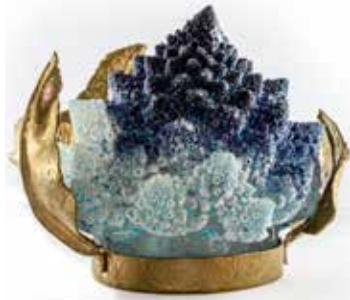
It has an amazing shape and it has always been an element of study. Sophisticated object enjoys a surprising peculiarity, the design of its stairs composed of lumpy geometric reliefs that are repeated and intertwined in a spiral. Its entire structure is filled with a large amount of miniatures that are repeated endlessly creating a "fractal", a geometry that has been studied and applied in art and science.



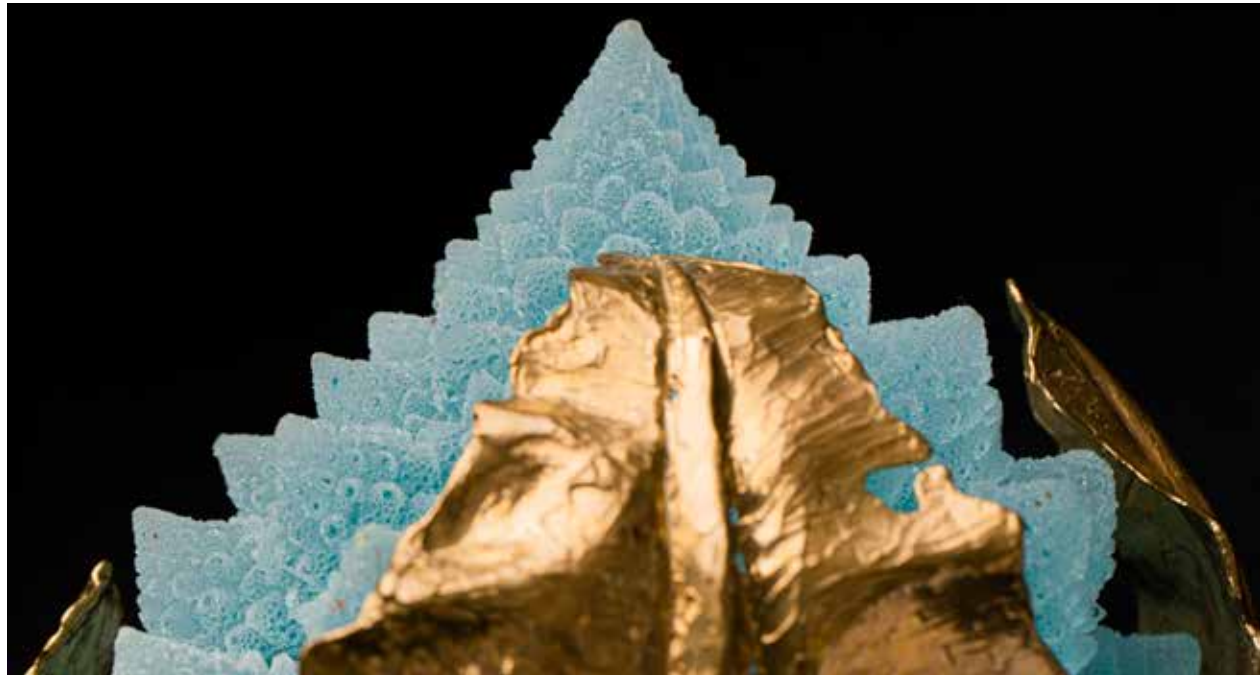
**ITS SHAPE CARRIES
WITHIN ITSELF
PERFECTION
NATURAL
OF CREATION**

Each element replicates the same pattern as the previous one. This perfection has been studied in every detail and is reproduced with resin, a material with which it is possible to obtain a complex precise and rigorous shape, characteristic of its aesthetics.





The finishing leaves are worked like a jewel, using the microsculpture lost wax process. Bronze casting creates elegant decoration, conferring a frame to the Romanesque shape and giving it a unique preciousness.





DISCOSOMA

The Coral Triangle located in the tropical waters of the Pacific is the global center of marine biodiversity. Located in the Solomon Islands, *Turbinaria Reniformis* is one of the most recognizable corals. It takes on different shapes and characteristics depending on the depth in which it is found: in the deepest waters it reaches an appearance similar to a vase or a plate.

The natural shape of the sea elements is transformed into furnishing objects. Discosoma is a sculpture container that enriches the interiors design with extreme elegance.

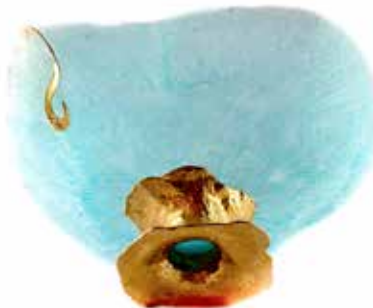


**NATURAL SHAPE
OF THE ELEMENTS
OF THE SEA
BECOMES STYLE
IN THE FURNISHINGS**

The resin allows a perfect reproduction, typical of nature. The finishing of the bronze base raises the coral: so the marine element reaches the earth and is enhanced with leaves, animals or decorations made in micro sculpture.









ANIMALIA

The Animalia collection comes from existing variety in the animal world, wanting reproduce as many forms as possible. The countless interpretations of animals have given them value to considering them totemic, magical and otherworldly as esoteric symbols, transmitting their infusing virtues.

Everyone can choose one animal as a symbol: depicted as a statue and inserted in the house, it makes the person closer to his essence.

Each animal has a precise symbolism and a history that are brought to life by a faithful representation.



ANIMALS
SYMBOLS
TOTEMICS
MAGICAL
OTHERWORLDLY

The house is the portrait of who live there, the choice of objects, furniture and details can contain life stories and memories.

The bronze or silver collection, through the microsculpture lost wax technique,



reproduces the most infinitesimal details of animals and the characteristics of their natural habitat.

They can be decorations for stylish walls and sculpture for interior design.











NATURA

The sculptures enhance the space by personalizing it through small and detailed natural shapes, which, with their decorative function, create the perfect atmosphere in each context. The NATURA collections also made appliques. Nature with her design becomes the protagonist, reproducing in precise bronze microsculptures worked with the ancient lost wax method, the variety of forms in which it is expressed. Ranging between different styles and multiple needs, each one adds an elegant detail in harmony with the space and giving life to a piece of furniture.

The LEAVES appliques blend with the furniture in different ways for example as Laurel or Maple, creating harmonious colored objects representing autumn in the house. The strength of natural elements of the form of MATERIE collection represents the excavations of the bark and the sinuosity of nature.



LAUREL
DETAIL
NATURAL
ELEGANT
ALWAYS
IN HARMONY
WITH SPACE













ARBOR

The concept and the idea starts by creating an enchanted forest, where family can live experiences and peaceful and relaxed moments.

The iron sculpture is complex and articulated. The top hides the TV: it consists of countless iron wires welded one by one that intertwine forming the crown.

They are garnished with perfect maple leaves made with the ancient micro-sculpture lost wax technique, made in different shades between silver and bronze to give movement and color to the intertwined branches.

A remote control moves the foliage panel upwards, thus allowing the TV to perform its function in the moments of viewing. The structure base of the tree, is given by refined weaves that form the texture of the bark.







**A ENCHANTED WOOD
WHERE TO LIVE
THE MOMENTS
OF PEACE AND RELAX**

The roots end on a metal shelf containing the electrical part, forming a bench under a tree in a wood. The technique and bronze workmanship make a elegant and precious furniture with unchanged style over time.





Ti.Ti.

The unmistakable style of Ti.Ti. follows the same philosophy of jewelry.

They are iron creations with a minimal style and their shape varies in size that are designed for the spaces in which they are inserted, respecting the surrounding furnishings and the present style.

The handles, polymaterial microsculptures worked with the lost wax process, blend with resins and natural raw or precious stones. Contamination of different styles and materials make the furniture delicate but with a solid structure with a contemporary character, sometimes ironic but always precious.



Iron, bronze and raw minerals come together in a solid structure with simple regular and essential base as a box: a succession of regular lines drawers and doors in different heights and simple shape decorated with magnificence.



OPTICAL sculpture and decor collection

It tells about the strength of forms and their ability to transport on an abstract journey. The metal protagonist, with the hypnotic repetition of minimal circular shapes, is transformed into articulated and complex structures sometimes with stones incastonated.

OPTICAL line allows to create accessories for furnishing that can be modified or embellish with details.



**THE POWER
OF SHAPES
REPEATS ITSELF
IN A HYPNOTIC
MANNER**





**THE PLEASURE
OF A WORK
OF ART
CARVED OUT
IN MATTER**

MATERIE sculpture and decor collection

The manipulation of matter and the constant search for new forms generate a sculptural collection that highlights the beauty of metal, bronze or silver, and its multiple material shades.

It is possible to create spaces decorated with objects such as furniture feet, knobs or even simply sculptures from the MATERIE line in furniture.



The hypnotic metal of the OPTICAL line is once again the protagonist, with its repetition it becomes a lamp. The articulated and complex structure welcomes the light, transmitting on the walls a truly characteristic and personal reflection of the shapes even in different circular shapes and sizes.





From the MATERIE collection, combining the skill of microsculpture with the creativity of art, appliques are developed which, with their characteristic grooves, also make the walls of the common areas unique, allowing them to become works of art.

The bronze appliques of the MATERIE collection can be made in the desired size and are supported by a base realized with a standard electrical connection.





POMI

Handles and knobs are fundamental elements in interior design. They revolve around the openings of objects or walls adding elegance and design to the furniture elements.

Their realization is based on the same philosophy of the jewels worked with the ancient technique of microsculpture in lost wax and bronze casting.

Natural precious or semi-precious stones intertwine with metals, showing themselves as eyes of light, transforming and embellish the interior design giving there a unique and personal style.

Unique and precious, the handles can be designed according to the needs of the place where they are situated. They are sculptural forms made of metal that play with the different colors of bronze.



**DETAILS OF
DESIGN AND
CRAFTSMANSHIP
WHICH DOES
THE DIFFERENCE**













**UNIQUE AND
PRECIOUS
THEY ARE
EYES OF LIGHT
IN FURNITURE**













VARCO

The Varco lamp came from OPTICAL collection as the most characteristic and spectacular expression of iron sculpture. It represents a multidimensional passage showing multiple facets to the viewer who has audacity looking through it.

The elements manage to make the space modern and dynamic. Lighting becomes an installation and acquires personality and a unique style. The structure is made in iron entirely by hand. The sheet is cut and folded giving it a circular shape of different diameters giving a moving design.

The circles are welded together forming that Optical effect, the light beams positioned inside them give the shape a colored effect enhancing the geometric figure in an intertwining of matter and light.



**INSTALLATION
LIGHTING
AND PERSONALITY
FROM STYLE
UNMISTAKABLE**





Thanks to this combination of elegance and light, darkness takes shape becoming a great expression of modern and contemporary design, always versatile in the most classic interiors giving a harmonious shape.













GENUS

GENUS is a bookcase designed as a sculpture that connects minimal and elegant styles in furnishing.

Different materials are used to make the supporting structure and the internal decorations of the cabinet. The different textures and colors give it a modern and versatile style.

The base is an iron box high 90 cm embellished with precious knobs worked with a microsculpture process with melted bronze, as they were jewels.

Oceanic jaspers, similar to Venetian moray eels, are added to give uniqueness and enrich the knobs detail.

The structure changes proceeding upwards, where the irregular shapes open on iron containers of different levels and different heights. They can contain objects of various genre as vases, books or sculptures.



Inside the bookcases, iron circles illuminated with LED lights are decorated with beautiful raw minerals, making everything more harmonious and particular. The effect is unexpected, almost irreverent and very contemporary.





**THE ARTISTIC
TASTE THROUGH
UNIQUE DETAILS
IN A SPECIAL
HISTORY SHELVES**





LINEA

The LINEA lamp is a linear and minimal sculpture that can be customized in dimension and height. Its iron simple structure is realized artisanally by the oxyacetylene welding technique. It is perfect for all those interiors where is not expected using of suspensions or chandeliers, but in which it is useful to have perfect lighting in order to work, to read or to dine. It illuminates the space in a discreet way, focusing on a well-defined surface such as a shelf it makes an intimate atmosphere but at the same time very functional.

Its linear shape breaks up the area with its delicate and light stem, almost hiding in space but providing precise lighting thanks to its clear cut ray of light.

Its iron construction starts from the base as a perfect parallelepiped and







**CLEAN AND
ESSENTIAL
DESIGN OF
CONTEMPORARY
AND ELEGANCE**

ends with right momentum that gives the to the lamp great majesty.

The light effect is perfect in any space, its a contemporary shape characterized by elegance and rigour, it can make the lamp suitable for all styles giving continuity to the rooms.





LINEA

applique

The Linea collection also includes the applique, which can be customized in the same way in height and length.

If the floor lamp creates a connection between the floor and the ceiling, the wall lamp continues to rise the space through the walls, thus giving further well-defined continuity to the rooms reaching ceiling with the shape of its clean cut ray light.

Its unmistakable style is adaptable and versatile, its function in addition to illuminating is to elegantly dress any wall without decoration.



**TO DRESS
WITH ELEGANCE
EACH WALL DEVOID
OF ANY DECORATION**



Patrizia Casapla

TABULA

In the home or at work, the table is a very important ally capable of supporting our work, our discussions and our moments of relaxation. This piece of furniture is generally composed of a wood, crystal, iron or bronze top generally based of numbers of legs or a central leg.

The table represents a meeting or an exchange point. If it is round it takes on a deeper meaning and is represented as the beginning of all things, being characterized by uniformity and sharing.

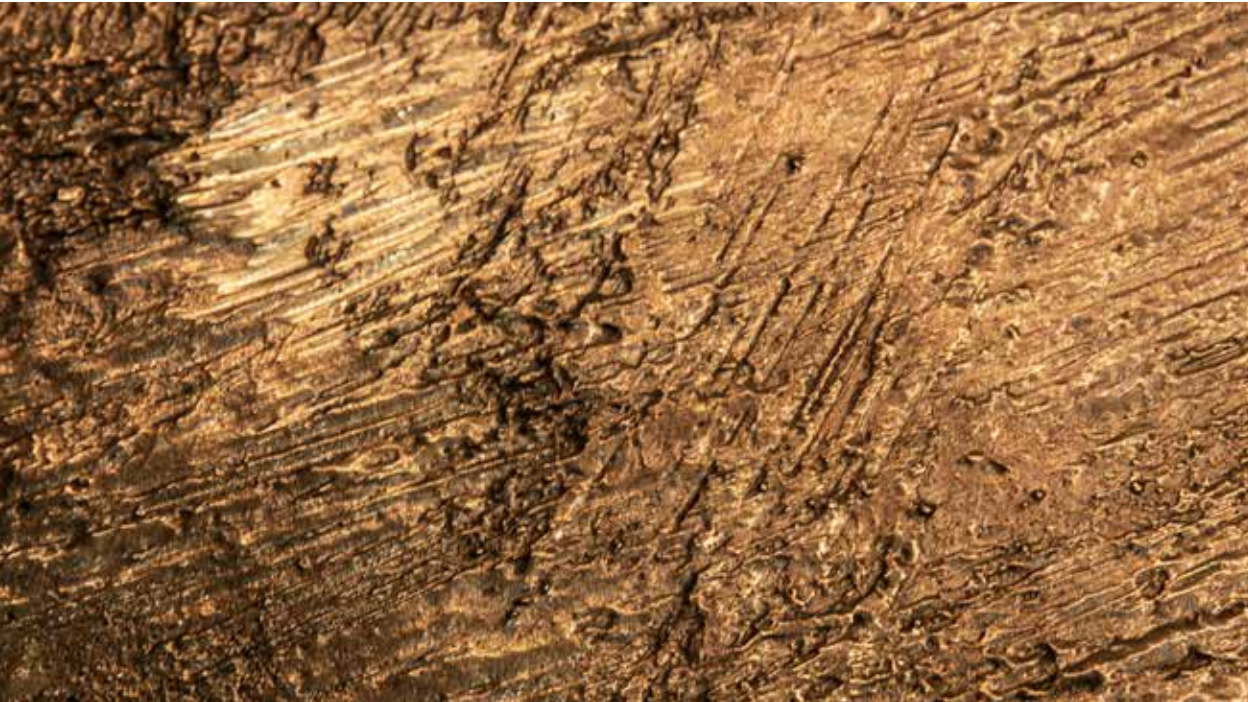
TABULA is an elegant sculpture contaminated by different elements that gives of furniture a particular design.



The simple iron base is worked with very linear tubulars studied to be adapted to realize coffee or dining table or console.



The articulated surface reflects the work of the micro-sculpture in melted bronze, which makes a solemn, precious and elegant top leaving it unchanged over time.







FUNZIONARTE LIVE

Art, painting, sculpture come together because it is from the forms that the path of creativity begins, where passion becomes a profession and design of culture.

The love for stones and the search for stylistic forms and contents give a unique and unmistakable personality, populated by beauty, magic, sumptuous shapes and great manual skills.

The artistic flair is at the service of the material, a laboratory that creates unique pieces made with the combination of precious stones and different materials, carefully studied in their shape and size.

THE LOST WAX CASTING

It is an ancient technique that allows you to create small sculptures sometimes contaminated by other materials such as resins or natural stones, making them unrepeatable objects in their originality.



The procedure starts from the modeling of the wax in a micro-sculpture from which a plaster cast is obtained. The metal melts, slips into the shapes left empty by the wax called "lost" with heat and becomes a jewel.





Bronze is the favorite among metals, is versatile and illuminates the object with a warm light. In contact with different acids produces dynamic color deviations continue to change over time, making the object as alive.



THE OXYACETYLENE WELDING

A more recent study focuses on the design of objects with a minimal and essential design, dedicated to the person and the environment around them. The large objects are made with the



old technique of oxyacetylene combustion welding technique which more precisely reproduces an industrial design, embracing an adaptable and versatile style of architecture and interiors.





**THE KNOWLEDGE
OF THE ANCIENTS
TRANSLATES
IN CONTEMPORARY
STYLISH OBJECTS**

This method combined with the micro-sculpture gives uniqueness at the design object, managing to transform the simplest objects into an artwork communicating with the interiors and portraying personality of the customer.



