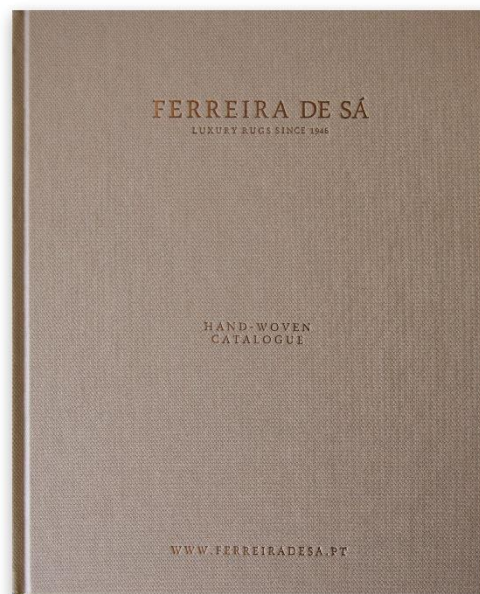


## New Hand-Woven Catalogue

The Ferreira de Sá hand-woven catalogue is already a highlight in the tapestry world. Each catalogue represents a synergy between a connection to the past, through production on handlooms, and a vision for the future, with innovation and the demand for new designs and models. Masters of weaving since 1946, in Ferreira de Sá, we try to keep alive the tradition of weaving on wooden looms, adding new colors, models and materials that seek to reinvent the way you look at a hand-woven rug. In this third edition of the catalogue, there are many new features, with special emphasis on the sub-collection dedicated exclusively to outdoor weaving rugs.

### Order New Catalogue



## New Designs

Full of color and texture, these new models quickly become the centerpiece of any space. Through their simple patterns and vivid colors, these new designs are able to show the elegance associated with the hand-woven technique to the space.

## Souk



Composition: New Zealand Wool

Size (Cm): 250x300

Pile Height (Mm): 6 Approx

Quality: Hand-Woven

\* Other Colours, Sizes, Materials And Shapes Upon Request.

\* The Products Are Hand-Made And Therefore Slight Variations In Dimensions And Colours May Occur (Up To 3%). Please Use Poms For A True Colour Match. Colour

Combination: Wild Ginger



## Tagine



Composition: Wool & Jute

Size (Cm): 160x420

Pile Height (Mm): 6 Approx

Quality: Hand-Woven

\* Other Colours, Sizes, Materials And Shapes Upon Request.

\* The Products Are Hand-Made And Therefore Slight Variations In Dimensions And Colours May Occur (Up To 3%). Please Use Poms For A True Colour Match.





## Patch



Composition: Wool

Size (Cm): 160x220

Pile Height (Mm): 6 Approx

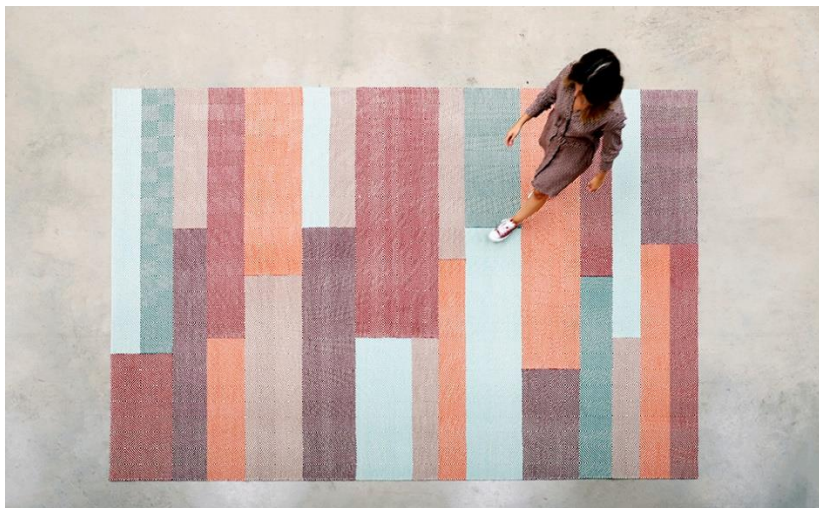
Quality: Hand-Woven

\* Other Colours, Sizes, Materials And Shapes Upon Request.

\* The Products Are Hand-Made And Therefore Slight Variations In Dimensions And Colours May Occur (Up To 3%). Please Use Poms For A True Colour Match. Colour

Combination: Marlin.

Patterns: Olho And Spinha



## New colors

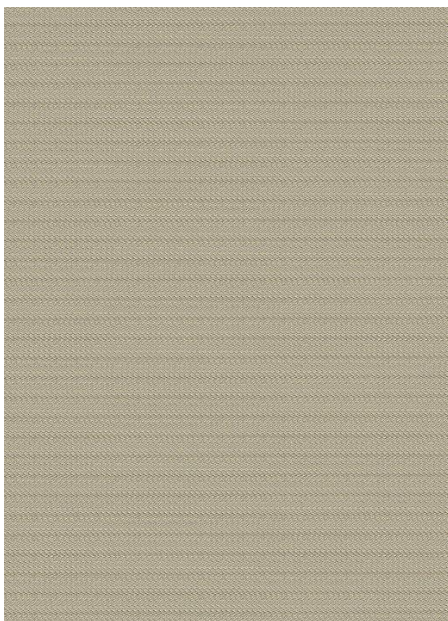
New colors have been added to the collection, which can be found in the **latest Hand-Woven box**. This tool assists you with your projects, giving quick access to all colors available in New Zealand Wool and Polypropylene.



## Outdoor Collection

Our passion for tapestry is not limited to interior spaces. We believe that outdoor rugs can add beauty and tranquility, managing to transform outdoor spaces. Thus, we have introduced in this catalogue an exclusive section of outdoor rugs. In addition to being able to be used outdoors, these rugs can also be used in your interior projects. Produced using polypropylene ropes, these rugs stand out for their durability and resistance to rain and sunlight.

## Razz



Composition: Polypropylene

Size (Cm): 170x 240

Quality: Hand-Woven

\* Other Colours, Sizes, Materials And Shapes Upon Request.

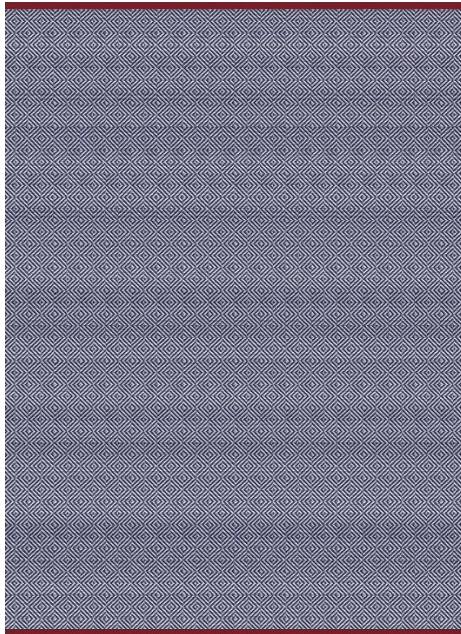
\* The Products Are Hand-Made And Therefore Slight Variations In Dimensions And Colours May Occur (Up To 3%). Please Use Poms For A True Colour Match.

Colour Combination: Marzipan





## Adel



Composition: Polypropylene

Size (Cm): 170x 240

Quality: Hand-Woven

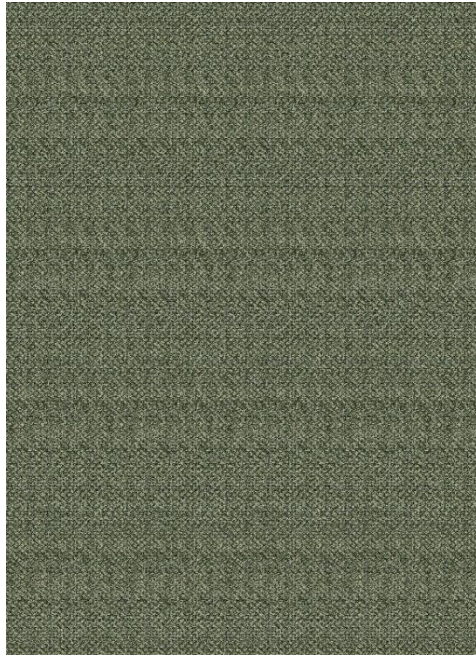
\* Other Colours, Sizes, Materials And Shapes Upon Request.

\* The Products Are Hand-Made And Therefore Slight Variations In Dimensions And Colours May Occur (Up To 3%). Please Use Poms For A True Colour Match.

Colour Combination: Clematis



## Pico



Composition: Polypropylene

Size (Cm): 170x 240

Quality: Hand-Woven

\* Other Colours, Sizes, Materials And Shapes Upon Request.

\* The Products Are Hand-Made And Therefore Slight Variations In Dimensions And Colours May Occur (Up To 3%). Please Use Poms For A True Colour Match.

Colour Combination: Kombucha





## Almalaguês



Composition: Polypropylene

Size (Cm): 170x 240

Quality: Hand-Woven

\* Other Colours, Sizes, Materials And Shapes Upon Request.

\* The Products Are Hand-Made And Therefore Slight Variations In Dimensions And Colours May Occur (Up To 3%). Please Use Poms For A True Colour Match.

Colour Combination: Popsicle

