



AW/2021 EDITION



PHOTO: HASSELBLAD STUDIO

"Through the camera lens I can see structures that are otherwise hidden to the naked eye which fascinates me."

- Göran Liljeberg



A TRUE PASSION FOR INSECTS, NATURE AND PHOTOGRAPHY

LILJEBERGS is a collection of images based on my photos of insects & other objects of nature. Behind my images are my great passion for insects, nature and many years of dedication to photography. Many of the photos has been used as illustrations in a variety of books but are now mainly used as art in home and public decor.

The insects that are used are mostly borrowed from various museums and from my entomology colleagues and their collections.

I photograph and print everything in my own studio. Each image consists of sometimes up to hundred images that have been packed together with different depths of sharpness to create as detailed and realistic images as possible. This macro technique allows you to enlarge the images at great magnification without losing any sharpness or quality.

The prints are all from highend 11-color inkjet printers. The images are printed on a matte 200 gram quality paper with pigment inks of the highest quality with a very long life span. This gives a quality and durability that far exceeds traditional offset printing.

Macro photography of small objects in large magnification has become my specialty. The goal is to show nature as it looks, with the detail, sharpness and color gamut required.

Today LILJEBERGS supply over 700 different prints of insects, botanicals, minerals & other objects from nature.

GÖRAN LILJEBERG

A TASTE FOR NATURE

Our images can be used in a variety of ways. Here are some inspiration from us, interior designers, stylists and from some of our customers.



OUR PRODUCTS

BUTTERFLIES & MOTHS

p. 8-21

BEETLES

p. 22-29

COLLAGES

p. 30-33

OTHER BUGS

p. 34-35

MINI PRINTS

p. 36-37

BLACK BACKGROUND

p. 38-39

PASTEL BACKGROUND

p. 40-41

HALF & HALF

p. 42

OBLONG

p. 43

BOTANICALS

p. 44-57

CRYSTALS & MINERALS

p. 58-59

GREETING CARDS

p. 60-64

FRAMES

p. 65

CONTACT

back page

SELECTING BACKGROUND AND FORMAT

You can choose between two versions of almost all our designs. When choosing **WHITE BACKGROUND, NO NAME** you get a greater contrast between the motif and the background - a more graphic look. When choosing **TINTED BACKGROUND WITH NAME** the contrast is softer, and you get a white border around it, like a built in passepartout - a more classic look. If you choose the tinted background you will also get the scientific name printed under the motif. There is also a third background on some of our prints; **TINTED BACKGROUND EDGE TO EDGE - NO NAME**, where there is no white passepartout and no name printed. We also have a small range on a pastel background and a range on a pitch black background.

Our standard sizes: A4(21x29,7cm), 30x40 cm, 40x50 cm, 50x70 cm and 70x100 cm. Note that not all of our prints are available in all sizes. *Please check our website to see available sizes and backgrounds on each design.* We can also customise sizes and designs upon your request. Mini prints are in size 15x15 cm and A5(15x21cm).



TINTED BACKGROUND
WITH NAME



WHITE BACKGROUND
NO NAME



TINTED BACKGROUND EDGE TO
EDGE - NO NAME

GALLERY ART WALL



PHOTO: MAISON&OBJET, PARIS

BUTTERFLIES & MOTHS



Colias palaeno



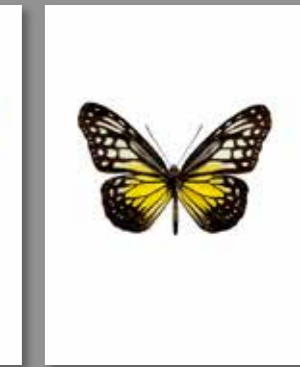
Aphrissa statika



Gonopteryx rahmni



Loepa katinka



Parantica aspasia cerilla



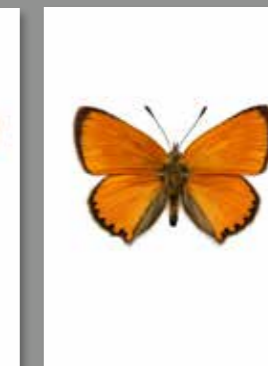
Automeris io, male



Automeris io, female



Arctia caja



Lycaena virgaureae



Delias aruna sertata



Delias oraia, underside



Delias splendida, underside



Arctia flavia



Hebomoia leucippe



Colias croseus



Hebomoia glaucippe



Anthocharis cardamines



Colotis antevippe



Cynthia cardui, side

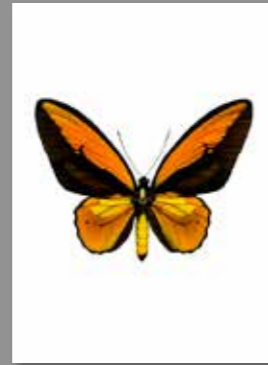


Mylothris agathina, side

BUTTERFLIES & MOTHS



BEST SELLER



Ornithoptera priamus, blue

Ornithoptera priamus, green

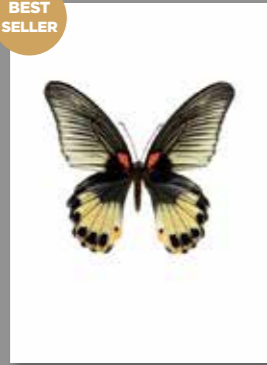
Ornithoptera priamus, orange

Ornithoptera rothschildi

Troides hypolitus sulaenesis



BEST SELLER



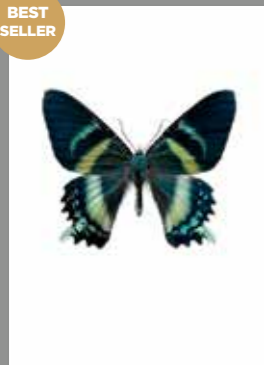
Teinopalpus imperialis

Papilio memnon, female

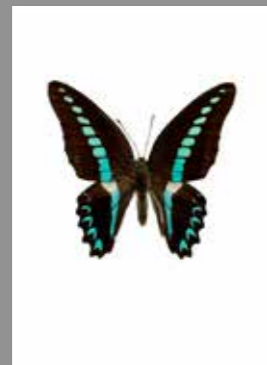
Papilio memnon, male

Papilio memnon, male - underside

Papilio deiphobus



BEST SELLER



Alcides orontes

Graphium sarpedon

Parides sesostris

Papilio blumei

Papilio ulysses



BEST SELLER

Papilio ascalaphus

Graphium weiski

Graphium weiski, underside

Urania ripheus

Morpho helenor montezuma

BUTTERFLIES & MOTHS



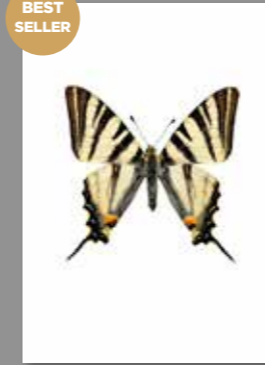
Papilio ophidicephalus

Papilio antenor

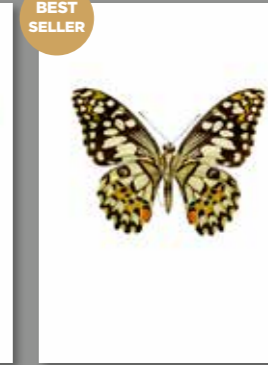
Papilio troilus

Eurytides leucaspis

Eurytides protesilaus



BEST SELLER



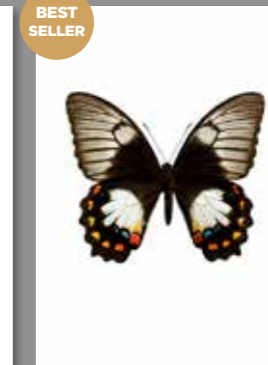
Iphioides podalirius

Papilio machaon

Papilio demoleus

Papilio demoleus, underside

Cethosia cyane, underside



Delias hyparete

Charaxes jasius

Charaxes jasius, underside

Papilio aegaeus

Papilio gambrisius



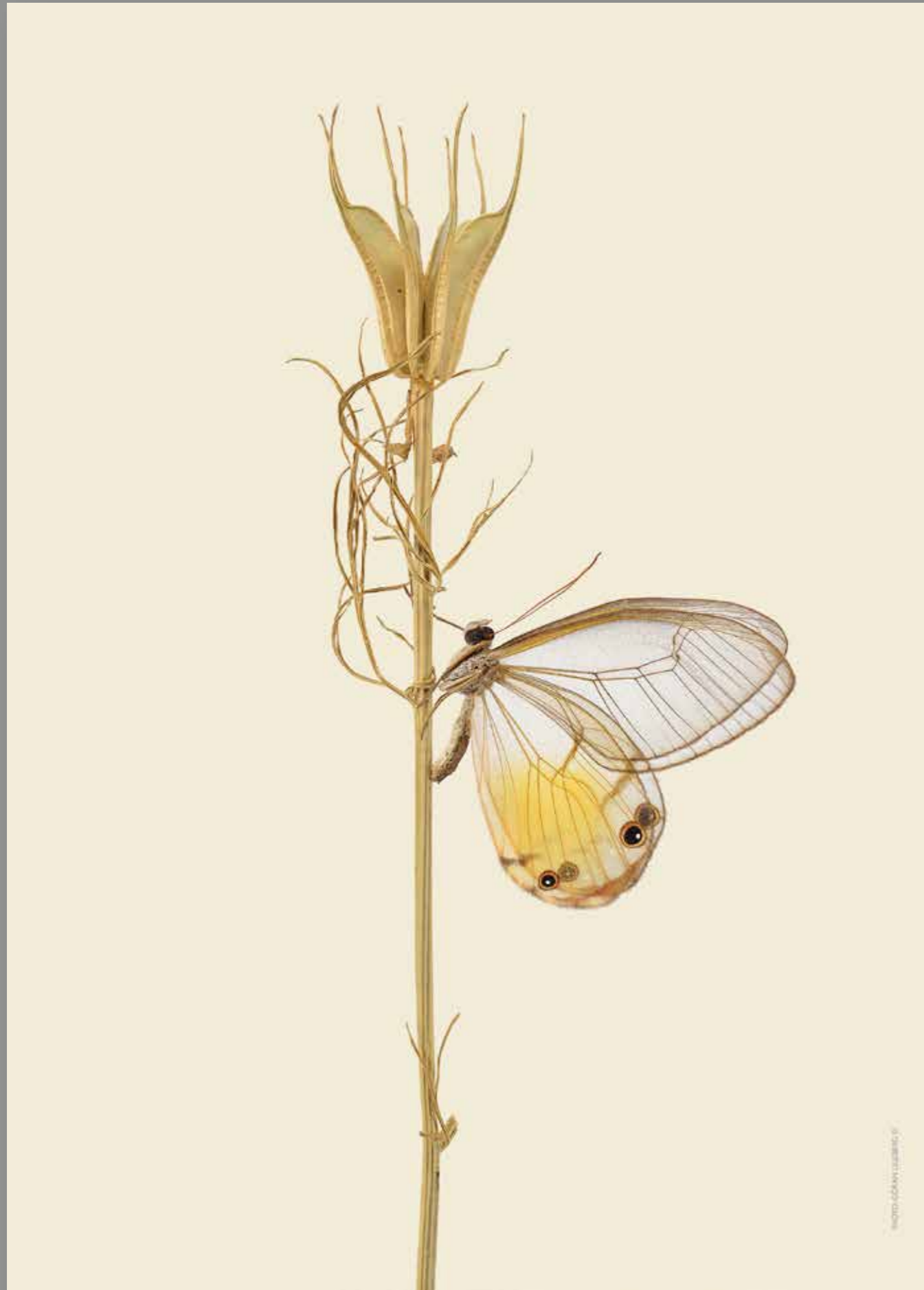
Parides vertumnus

Papilio euchenor

Nymphalis antiopa

Hypolimnas dexithea

Junonia iphita



Morpho deidamia



Morpho godarti

BEST SELLER



Anaxita sannionis



Amastus episcotosia



Etherusia repleta



Appias nero

BEST SELLER



Actia rhodopneuma

BEST SELLER



Colotis aurigineus



Perisama xanthica



Goneopteryx cleopatra



Papilio dardanus



Metardaris cosinga



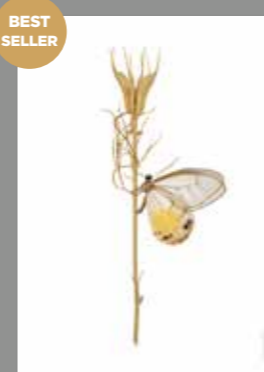
Thysonotis apollonius



Thysonotis danis



Polyommatus icarus



Haetera piera

BEST SELLER



Cithaerias aurorina

BEST SELLER



Cymothoe hyarbita

NEW



Precis harpyia

NEW



Precis octavia amestris

NEW

BUTTERFLIES & MOTHS



Kallima inachus



Caligo atreus



Choaspes benjaminii



Danaus chrysippus



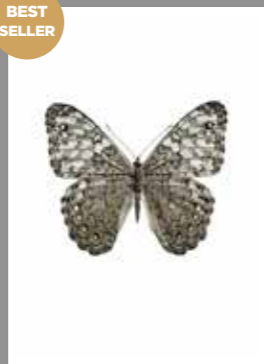
Hylophora cecropia



Atacus atlas

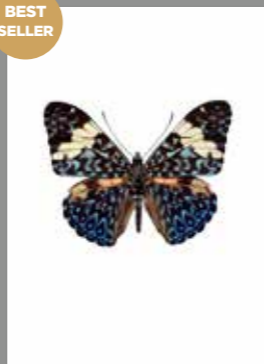


Atacus atlas, underside



Hamadryas amphichloe

BEST SELLER



Hamadryas amphinome

BEST SELLER



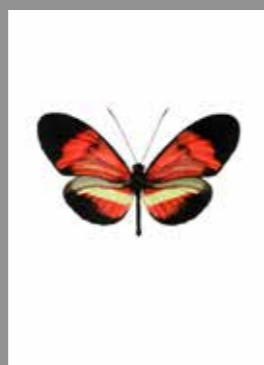
Hamadryas amphinome, underside



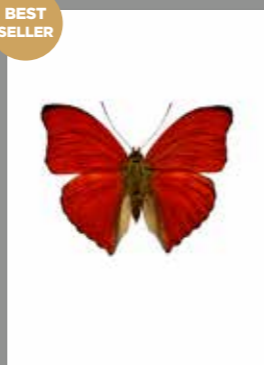
Batesia chrysochlora



Agrias claudina



Heliconius hybrid



Cymothoe sangaris

BEST SELLER



Salamis parhassus, pink

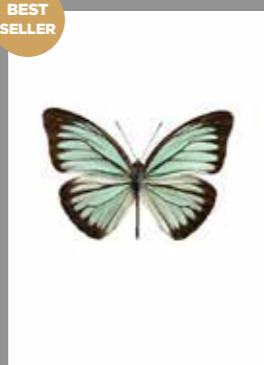
BEST SELLER



Papilio polymnestor



Papilio zalmoxis

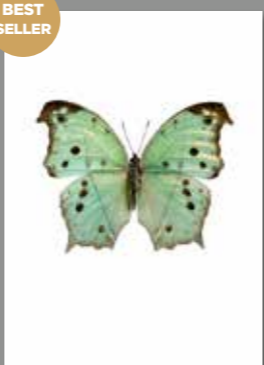


Pareronia valeria lutescens

BEST SELLER



Antonechloris smaragdaria



Salamis parhassus, green

BEST SELLER

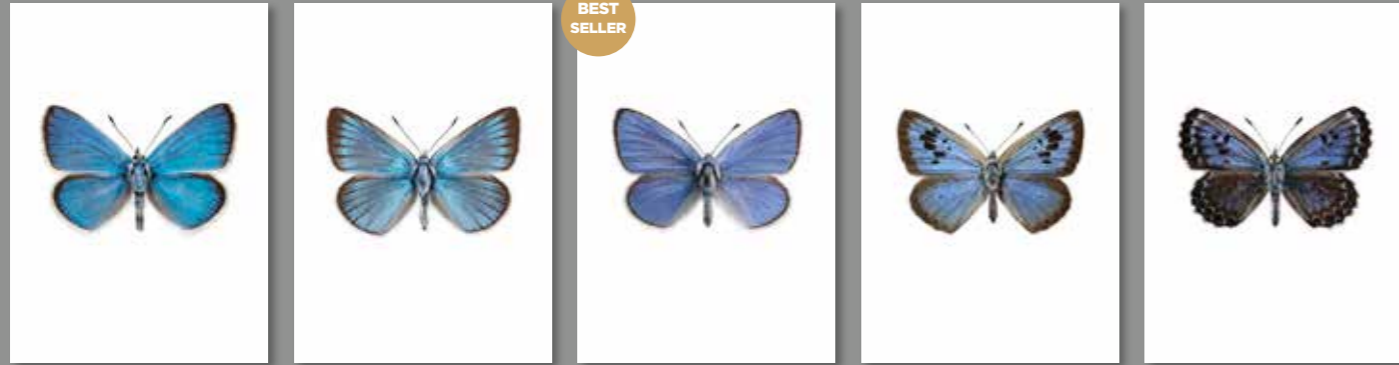
BUTTERFLIES & MOTHS



Hamadryas amphichloe

PHOTO: GORAN LJUBETIC

BUTTERFLIES & MOTHS

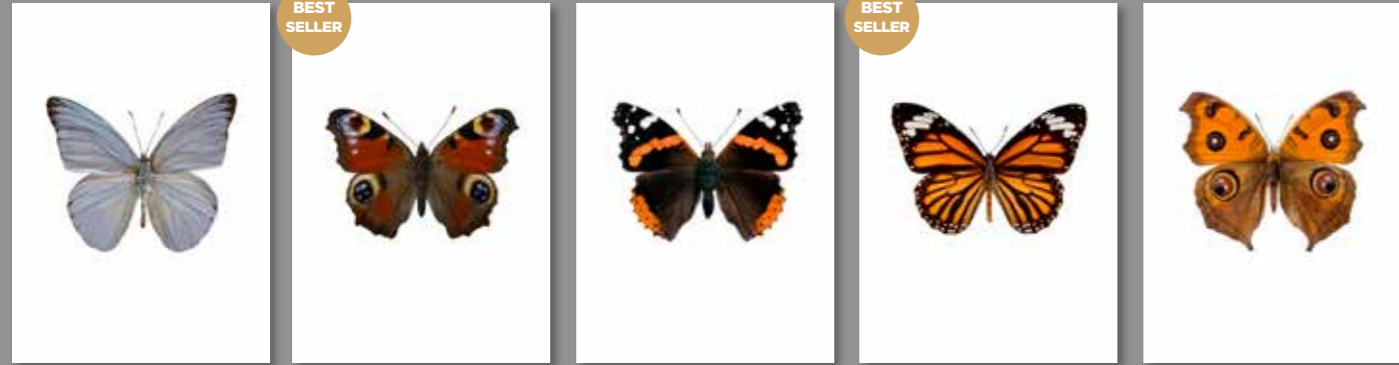


Cyaniris dorylas *Polyommatus amandus* *Glaucopsyche alexis* *Maculinea arion* *Scolitantides orion*

BEST SELLER

BEST SELLER

BEST SELLER

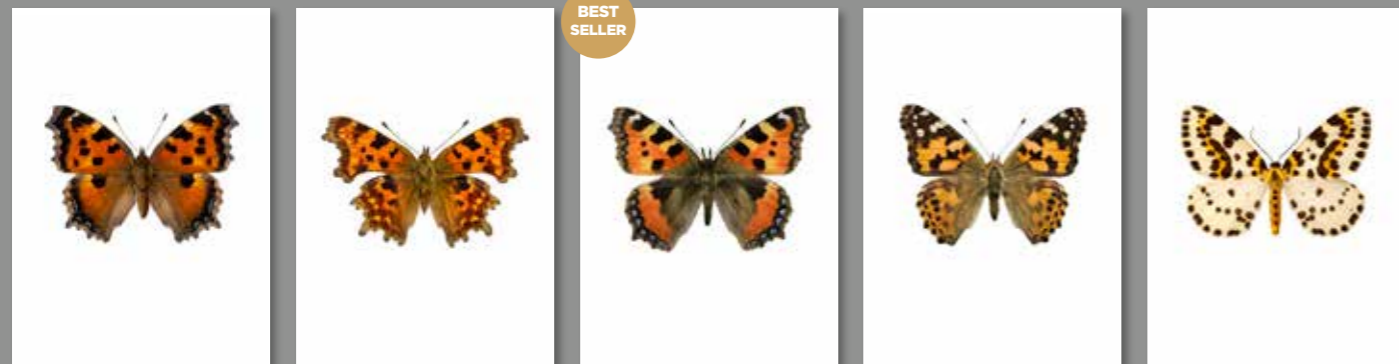


Appias celestina *Inachus io* *Vanessa atalanta* *Danaus plexippus* *Precis almana*



Argynnis adippe *Argynnis adippe, underside* *Issoria lathonia* *Issoria lathonia, underside* *Argynnis paphia*

BEST SELLER



Nymphalis xanthomelas *Polygonia c-album* *Aglais urticae* *Cynthia cardui* *Abraxas grossulariata*

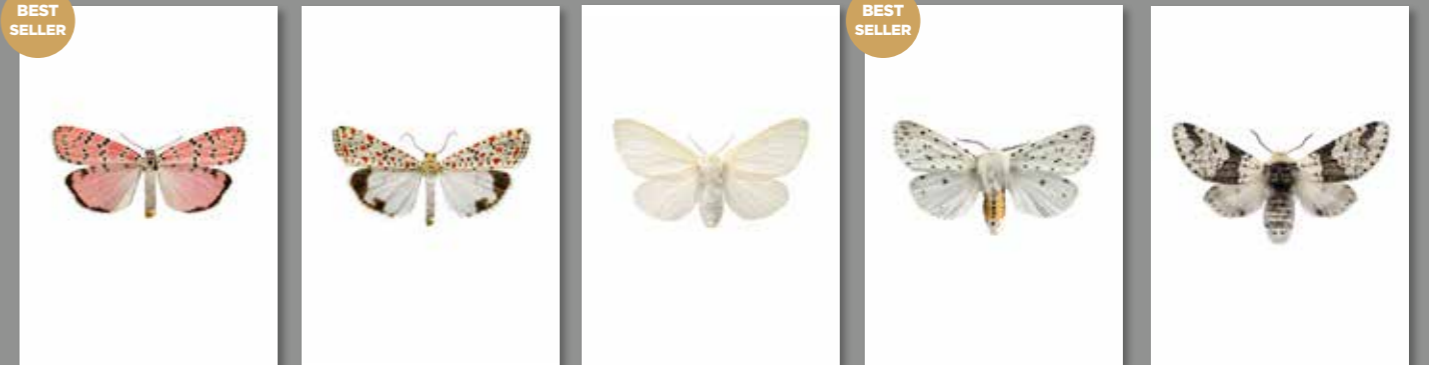
BUTTERFLIES & MOTHS



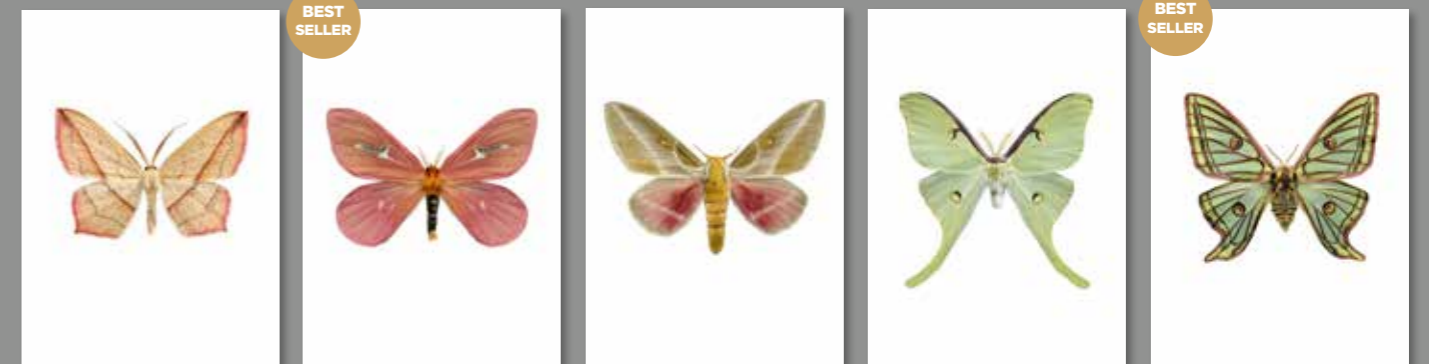
Pieris brassicae, female *Pieris brassicae, female - underside* *Pieris brassicae, male* *Aporia crataegi* *Bena biclorana*



Morpho luna *Appias sylvia* *Parnassius apollo wiscotti* *Parhassus apollo* *Leptidea reali*



Utethesia ornatrix bella *Utetheisa pulchella* *Leucoma salicis* *Spilosoma lubricipeda* *Furcula bicuspis*



Timandra comae *Cerodirphia apunctata* *Spingicampa raspa* *Actias luna* *Graellsia isabellae*

BUTTERFLIES & MOTHS

BEST SELLER



Hamadryas velutina

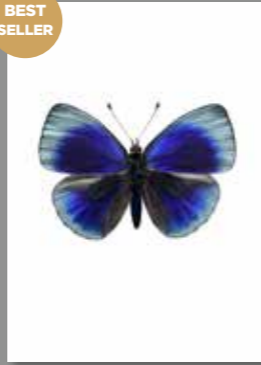


Memphis offa



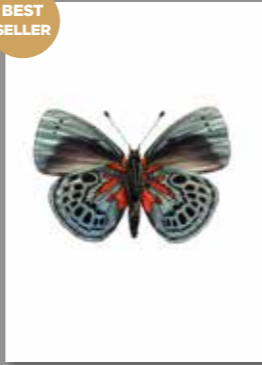
Anaea cyanea

BEST SELLER



Asterope leprieuri

BEST SELLER



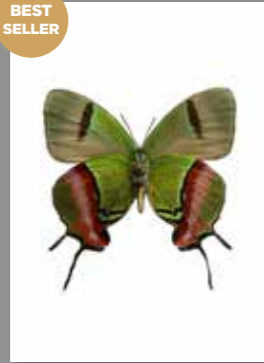
Asterope leprieuri, underside

BEST SELLER



Evenus coronata

BEST SELLER



Evenus coronata, underside



Euchloron megaera



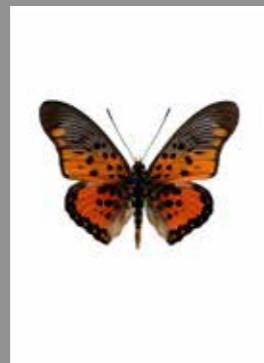
Acheronitia atropos



Brahmaea wallichii



Panacea prola, underside



Pseudacraea boisduvali



Atrophaneura semperi albofasciata



Hypolimnas usambara



Milioni drucei



Anteos menippe



Catopsilia pomona



Charaxes candiope



Charaxes candiope, underside



Papilio maackitutanus

ART WALL - BEETLES & BUTTERFLIES



PHOTO: PAUL CRAIG STYLING: KATE WATSON-SMYTH SET: LUCY DACHTLER

BUTTERFLIES & MOTHS

Landscape format



Aloa lactinea
Landscape



Trabala vishnou
Landscape



Agape chlorophylla
Landscape



Stemorrhages sericea
Landscape



Agrilus convolvuli
Landscape



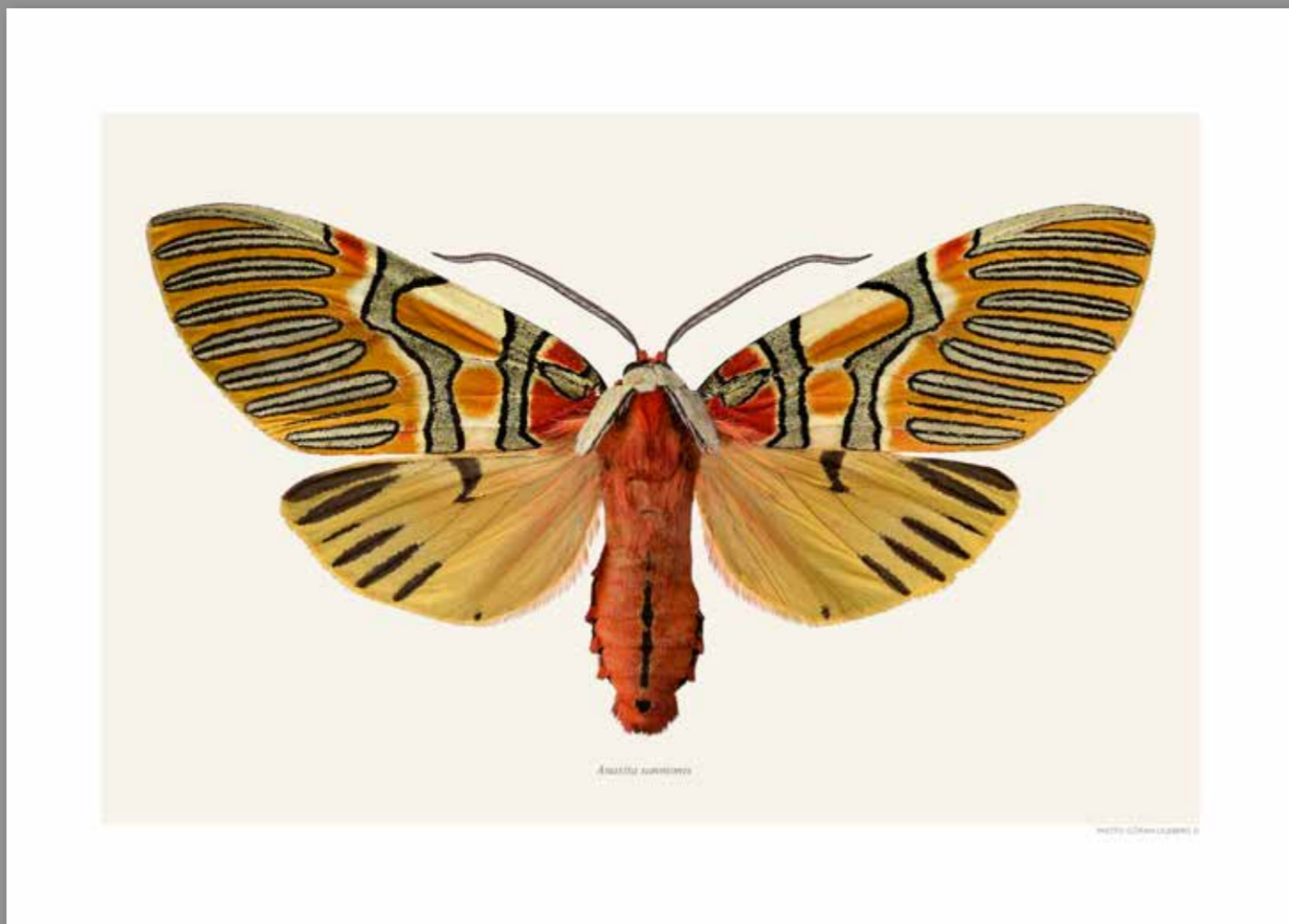
Manduca rustica
Landscape



Ostrinia palustralis
Landscape



Argina argus
Landscape



Anaxita sannionis here shown on tinted background with name in landscape format.

BUTTERFLIES & MOTHS

Landscape format



Ailanthus defoliator
Landscape



Utetheisa ornatrix bella
Landscape



Utetheisa pulchella
Landscape



Dryas julia
Landscape



Arctia caja
Landscape



Arctia flavia
Landscape



Anaxita sannionis
Landscape



Amastus episcotosia
Landscape



Acheronitia atropos
Landscape



Deilephila elpenor
Landscape



Daphnis nerii
Landscape



Euchloron megaera
Landscape



Spilosoma lubricipeda
Landscape



Leucoma salicis
Landscape



Bena biclorana
Landscape



Etherusia repleta
Landscape



Choaspes benjaminii
Landscape



Attacus atlas
Landscape



Attacus atlas, underside
Landscape



Brahmaea wallichii
Landscape

BEETLES



Scarabaeus sacer

PHOTO: GÖRAN L. JÄGER

BEETLES

BEST SELLER



Rosenbergia gilmour



Lochmaeocles tessellatus



Celosterna pollinosa sulphurea



Purpuicenus laetus



Pachyteria basalis



Odontolabis cuvera



BEST SELLER

Lucanus cervus, male



Lucanus cervus, female



BEST SELLER

Typhaeus typhoeus



Anoplotrupes stercorosus



Aphodius depressus



BEST SELLER

Scarabaeus sacer



Carabus blaptoides



Carabus nankotaizanus



Carabus lafossi

BEST SELLER



Geotrupes mutator

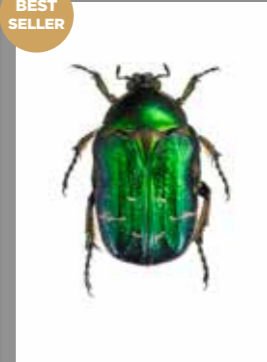


Potosia famelica



BEST SELLER

Cetonia aurata, blue



BEST SELLER

Cetonia aurata, green



Protaetia cuprea ignicollis

BEETLES



Plusiotis prasina



Plusiotis sallei



Chrysinia eurubscens



Plusiotis victorina



*Eudicella smithi
bertherandi*



Eudicella gralli



Garreta azureus



Calosoma sycophanta



*Cicindela chinensis
japonica*



Perotis unicolor

BEST
SELLER

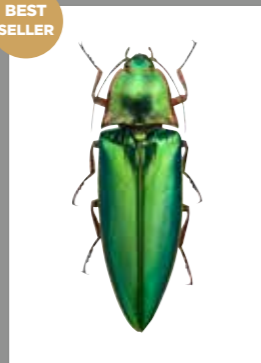


Catoxantha opulenta



*Belionota sumptuosa,
underside*

BEST
SELLER



*Campsosternus
auratus*

BEST
SELLER



Belionota prasina

BEST
SELLER



Chrysinia strasseni

BEST
SELLER



Eupholus bennetti



Eupholus cuvieri



Eupholus nickerli

BEST
SELLER

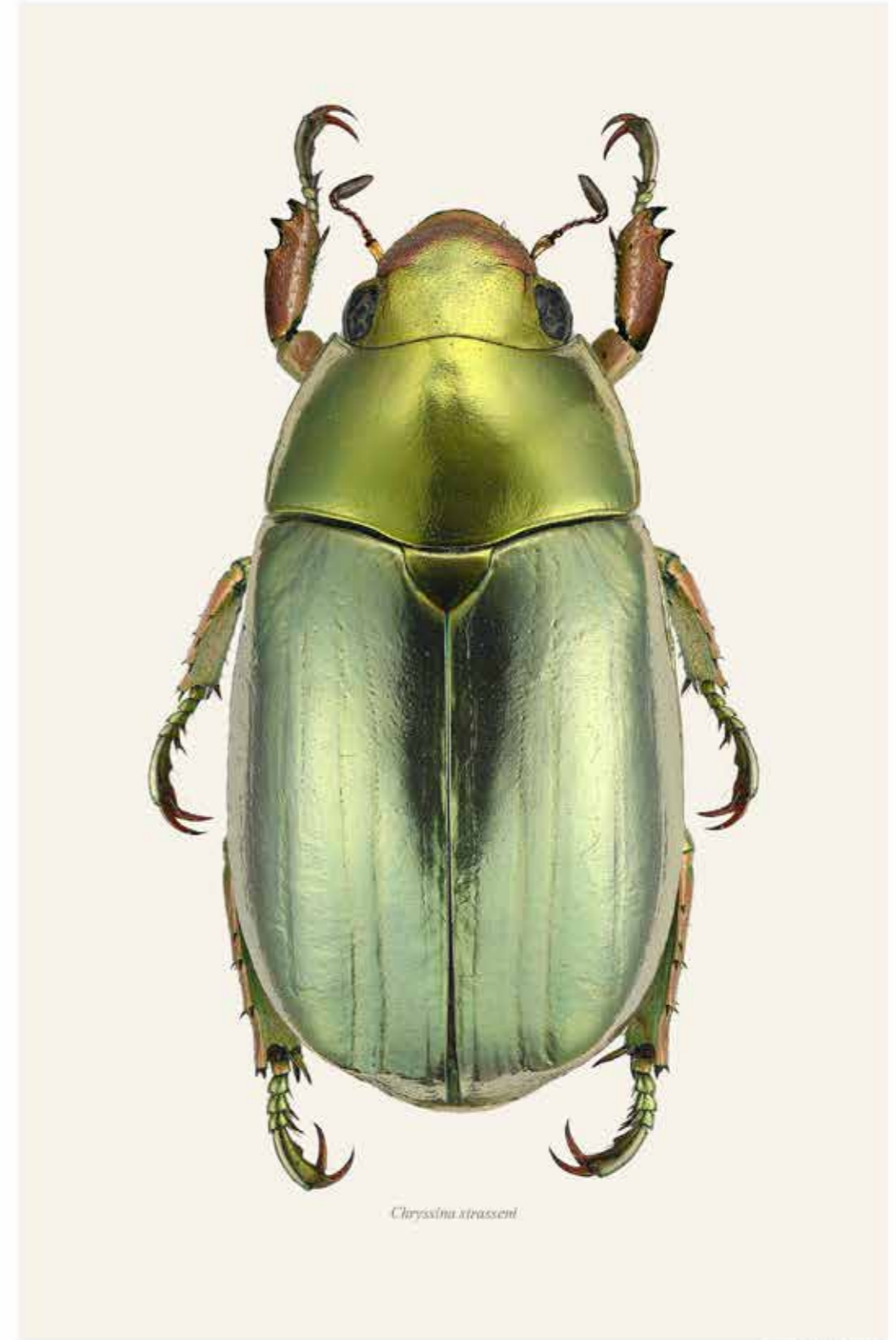


Goliathus orientalis



*Meccynorrhina
oberthuri*

BEETLES



Chrysinia strasseni

PHOTO: GOMAN UZBETOV ©

BEE TL ES

BEST SELLER



Chrysochroa buqueti rugicollis



Chrysochroa buqueti rugicollis, underside



Chrysochroa toulgoeti

BEST SELLER



Buprestis octoguttata



Polybotris sumptuosa gema



Galaeus walkeri



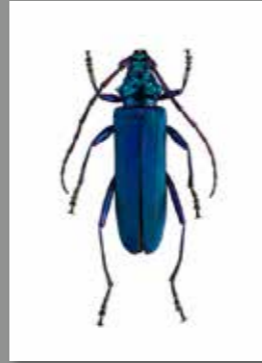
Galaeus walkeri, underside



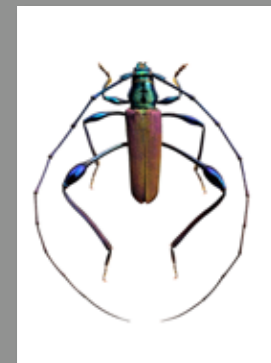
Callidium violaceum



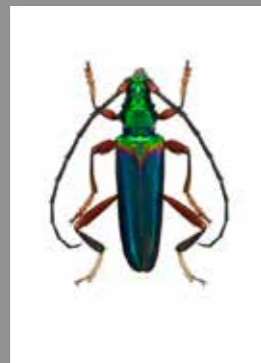
Gaurotus virginea



Aromia moschata



Mombasius aeneipes



Philematium festivum



Aphrodisium yungau

BEST SELLER



Trichius fasciatus



Pelidnota fulva



Stigmodera chevrolati



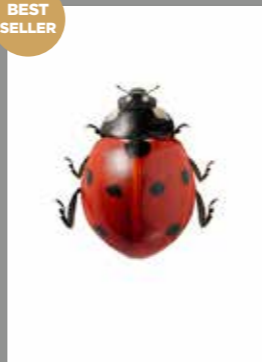
Metaxymorpha apicalis



Temognatha chalcodera



Purpuricenus desfontainii



Coccinella septempunctata

BEE TL ES

BEST SELLER



Prosopocoilus occipitalis anoella



Prosopocoilus ijengensis



Odontolabis castelnaudi



Odontolabis cypri



Calocomus desmarestii



Anexamita heterocnemis splendida



Lampropepla rothschildi



Anoplognathus lactus



Chlorocala africana oertzeni



Necrophila renatae

BEST SELLER



Alurnus humeralis



Chrysochroa lepida



Lepidiota stigma



Fornasinus fornasini



Stratiocera princeps



Phanaeus imperator, male



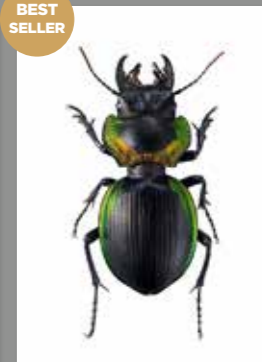
Phanaeus imperator, female



Alaus oculus



Dorcus parallelipedus



Mouhotia batesi

BEST SELLER

BEETLES



Rosalia batesi



Antragus pulchellus



Megalofrea bioculata



Batocera wallacei



Rosenbergia straussi



Paraepepeotes togatus



Tmesisternus rafaellae



Chrysochroa fulminans

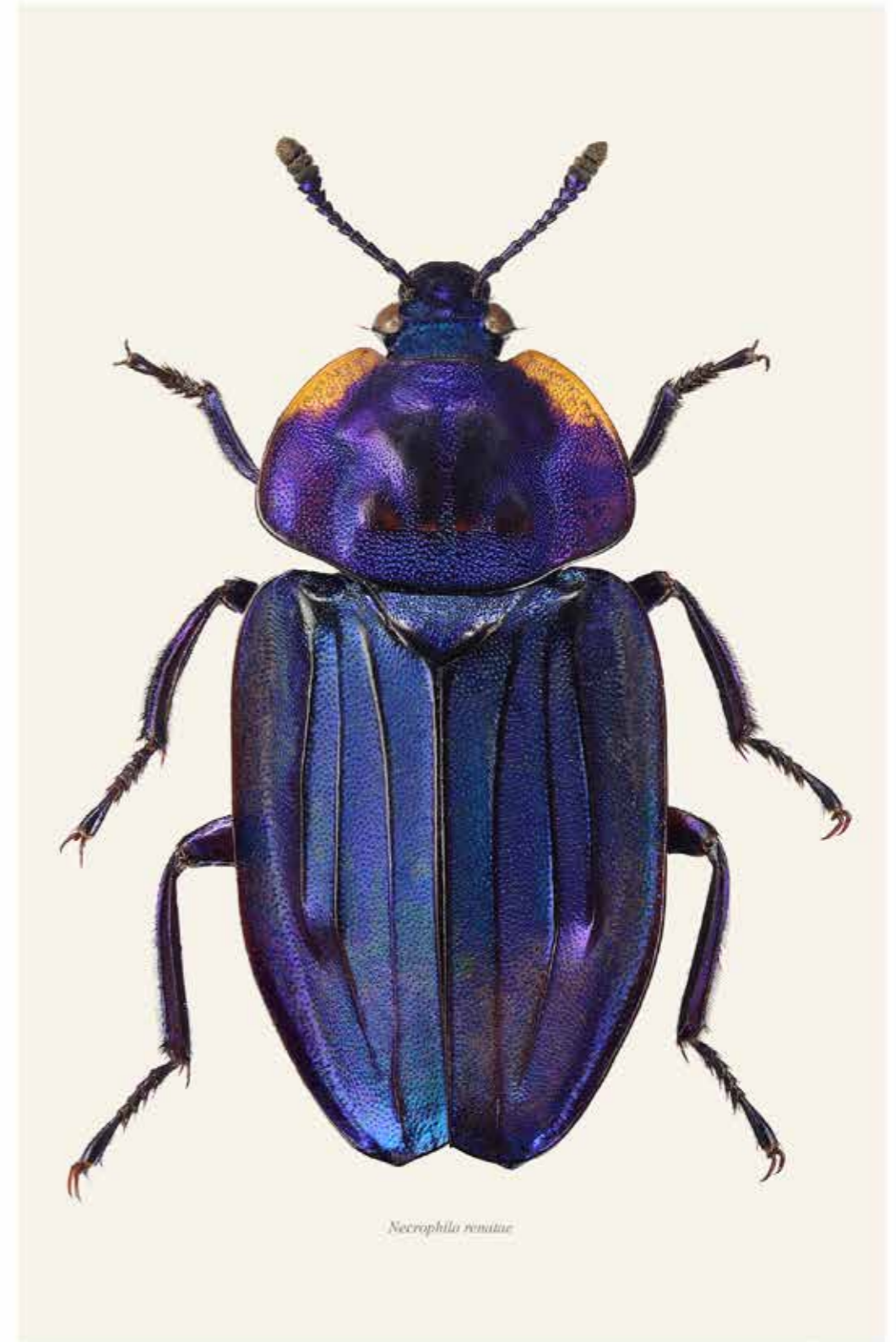


Lucanus cervus, male - landscape



Chlorocala africana oertzeni, wings - landscape

BEETLES



Necrophila renatae

PHOTO: GOMAN LUEBBIG ©

COLLAGES

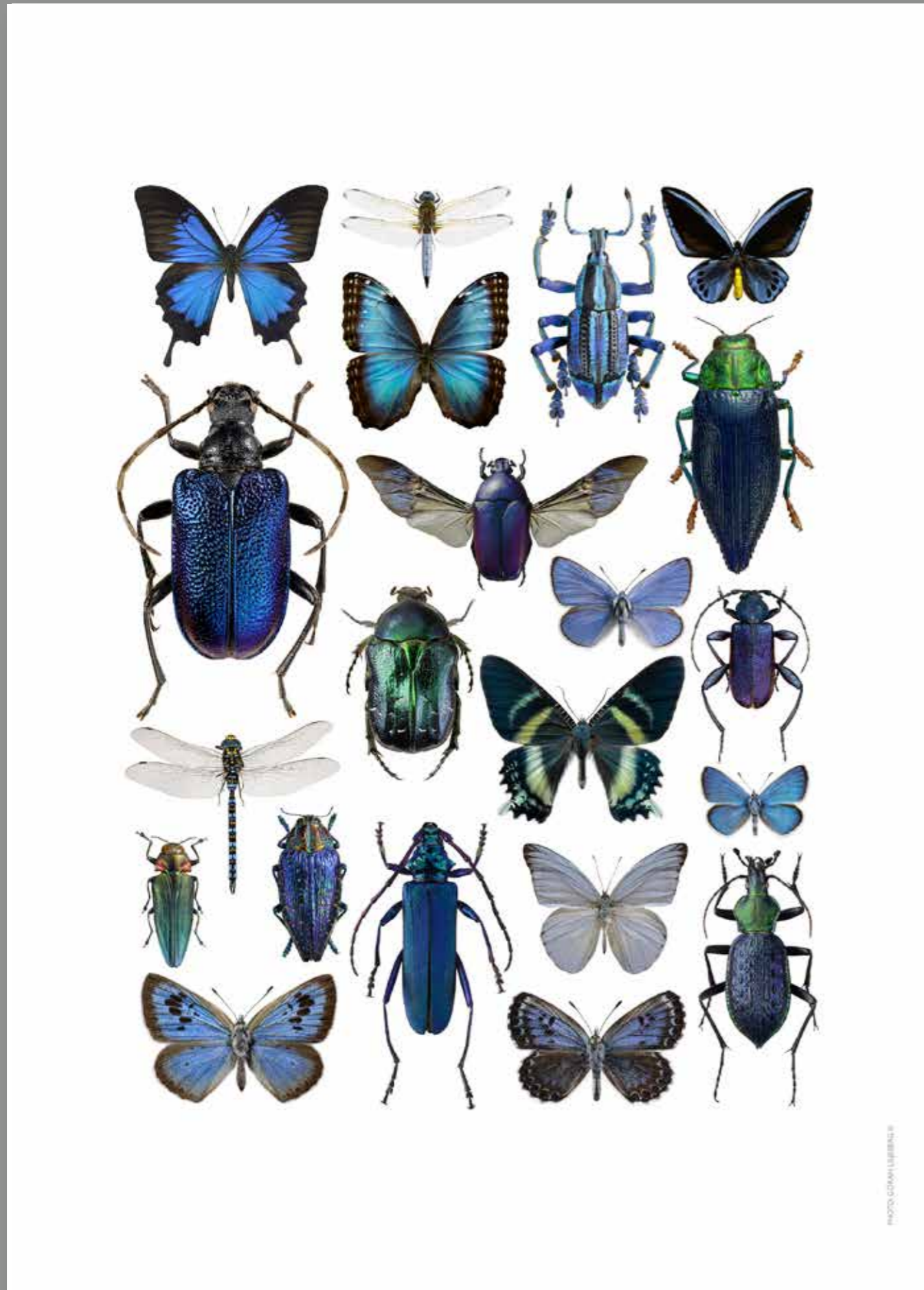


PHOTO: GORDIAN LUBERANSKI

COLLAGES



Pieridae yellow



Pieridae white



Papilio memnon, male & female



Trio of dragonflies



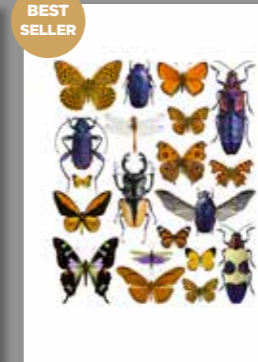
Trio of hawk moths



Beetles tawny



Beetles black & white



Bugs purple & orange



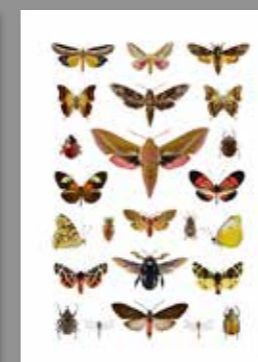
Bugs blue



Bugs green & yellow



Beetles multicolour



Vintage collage



Butterflies autumn



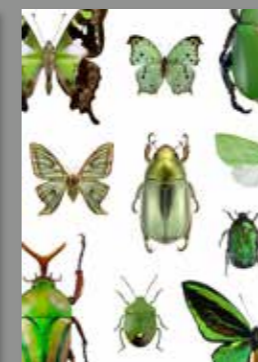
Butterflies black & white



Circle of bugs



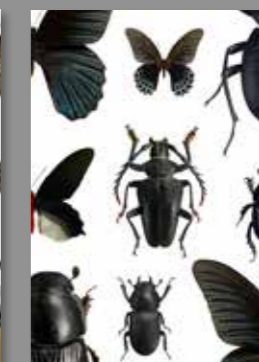
Grey bugs, edge to edge



Green bugs, edge to edge



Maroon bugs, edge to edge



Black bugs, edge to edge

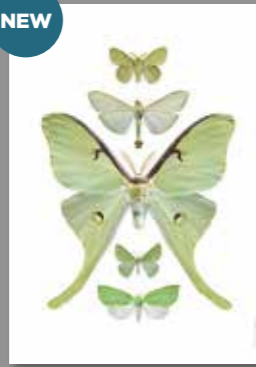
COLLAGES

NEW



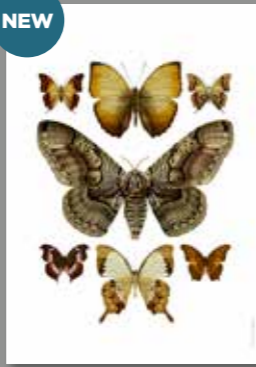
Blush coral moths

NEW



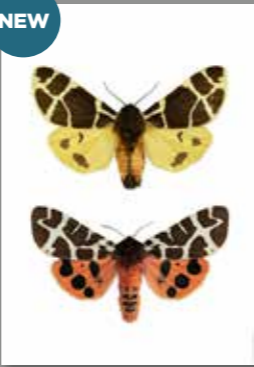
Emerald moths

NEW



Bronze butterflies

NEW



Arctic moths

NEW



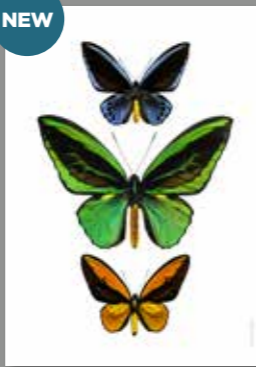
Amber trio of moths

NEW



Azure trio

NEW



Ornithoptera priamus trio

NEW



Ivory moths



Dung beetles, square



Folklore, square



Midnight, square

COLLAGES

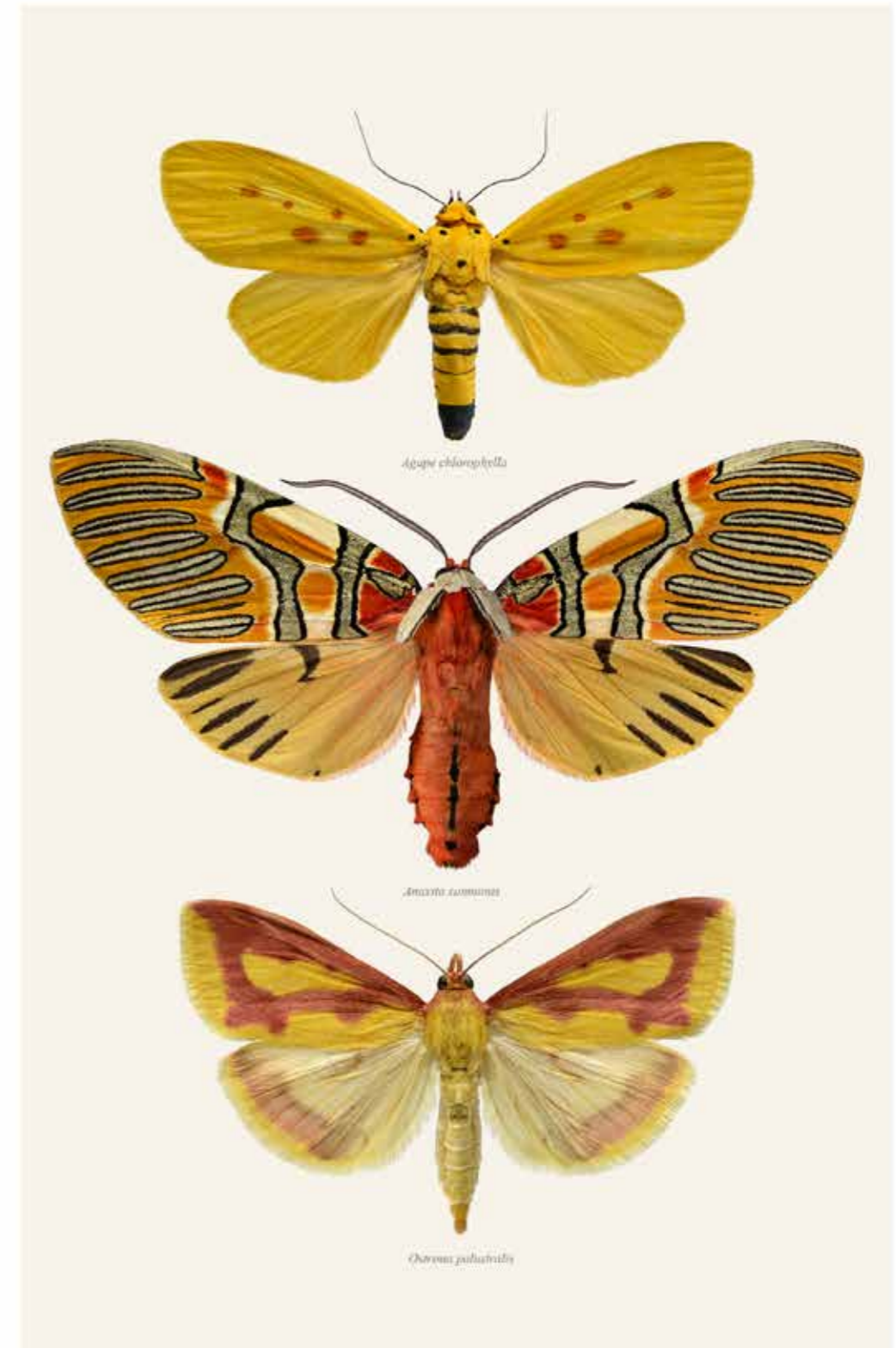


PHOTO: UOKAN UZUNBACI

OTHER BUGS



Phymateus saxosus
Grasshopper



Vespa mandarinia
Wasp



Metallyticus splendidus Mantis



Chrysocoris stollii
Stinkbug



Catacanthus nigripes
Stinkbug



Piezodorus lituratus
Stinkbug



Chlorochroa juniperina Stinkbug



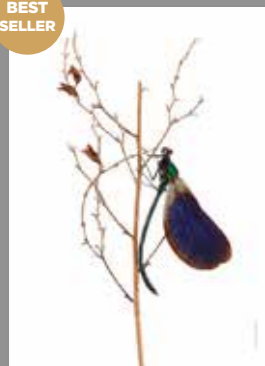
Graphosoma lineatum
Stinkbug



Acanthosoma haemorrhoidale Stinkbug



Elamucha grisea
Stinkbug



Calopteryx splendens
Dragonfly



Libellula fulva
Dragonfly



Orthetrum cancellatum Dragonfly



Aeshna isoceles
Dragonfly



Aeshna serrata
Dragonfly



Lophacris cristata
Grasshopper



Formica rufa
Ant



Latrodectus mactans
Black widow spider



Blowfly



Gymnocheta viridis
Fly head

BEST SELLER

BEST SELLER

BEST SELLER

BEST SELLER

BEST SELLER

OTHER BUGS

Landscape format



Lophacris cristata
Landscape - Grasshopper



Psophus stridulus
Landscape - Grasshopper



Xylocopa violacea
Landscape - Carpenter bee



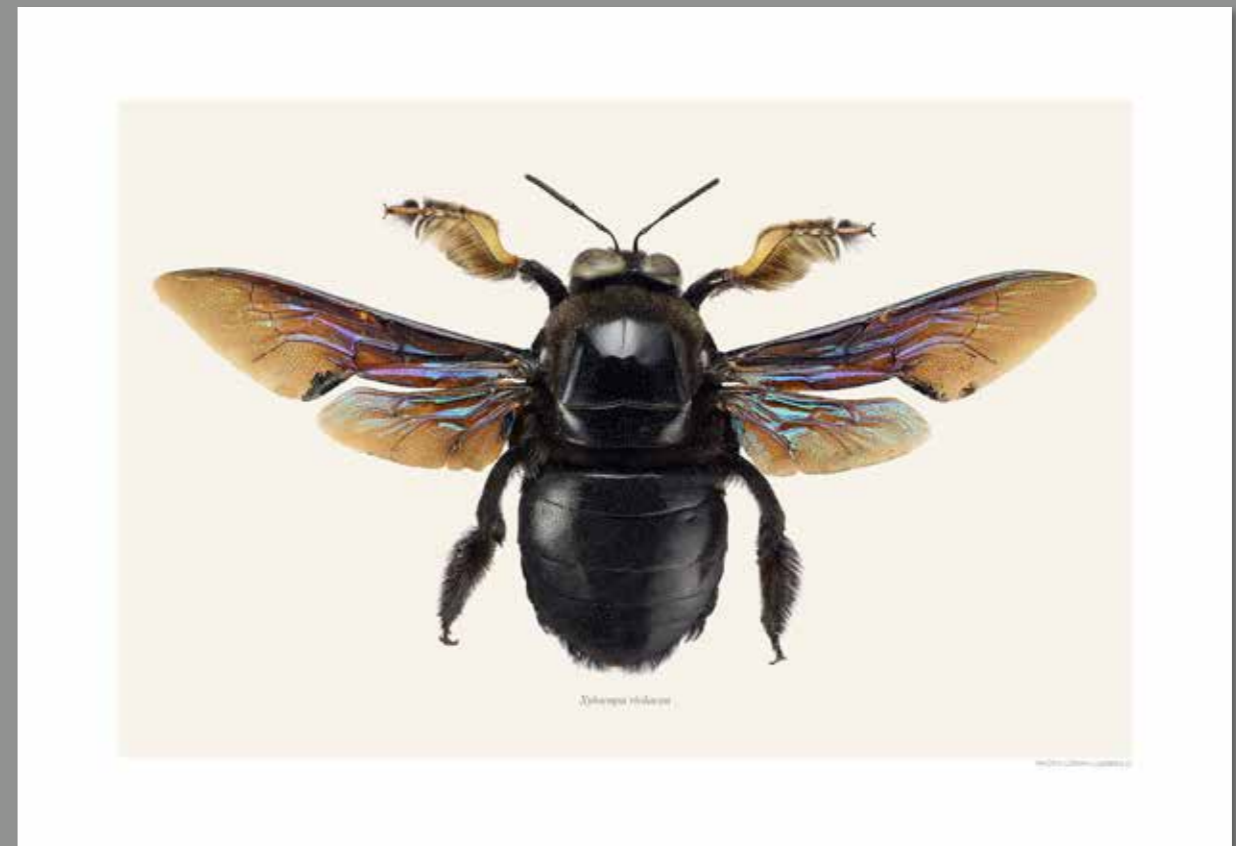
Omocestus viridulus
Landscape - Grasshopper



Tettigonia viridissima, nymph
Landscape - Grasshopper



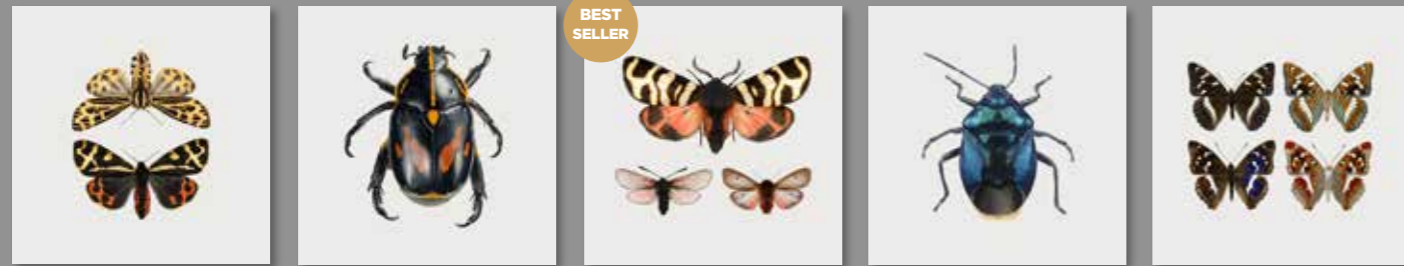
Formica rufa
Landscape - Ant



Xylocopa violacea here shown with tinted background and name.

FRAMED MINI PRINTS

15x15 cm square



500 501 502 503 504



505 506 507 508 509



510 511 512 513 514



515 516 517 518 519



520 521 522 523 524

FRAMED MINI PRINTS

15x21 cm (A5)



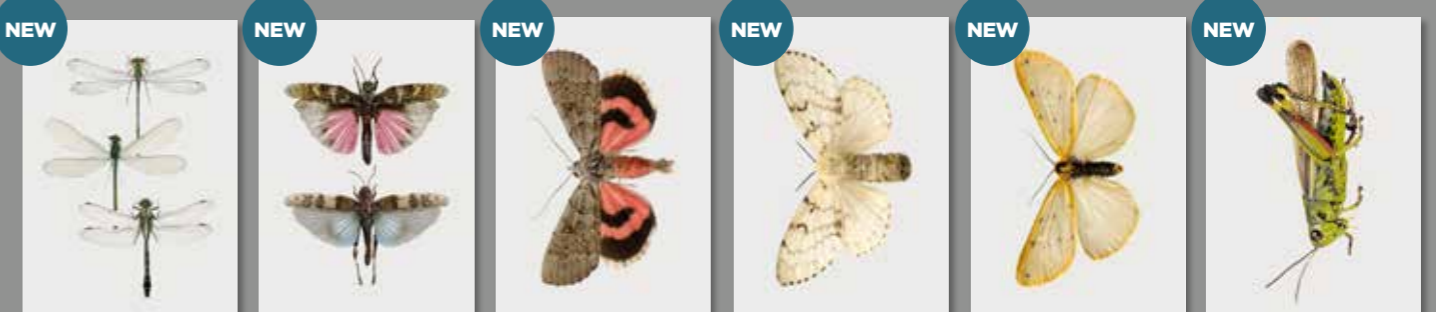
600 601 602 603 604 605



606 607 608 609 610 611



612 613 614 615 616 617



618 619 620 621 622 624



Our *miniprints* comes already framed in a black wooden frame, they are all on a light grey background. Perfect to put on shelves, windowsills, mantelpiece etc if you lack of wall space. And a perfect Gift size!

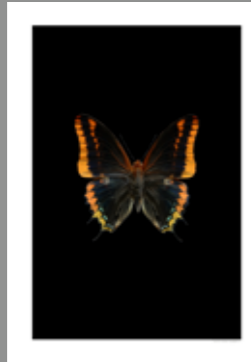
BLACK BACKGROUND

Available in sizes A4 and 30x40 cm.

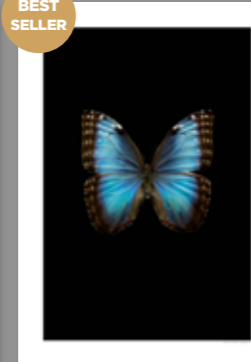
BEST SELLER



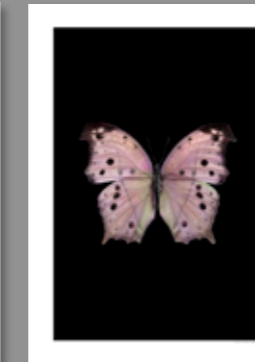
Ornithoptera priamus, black



Charaxes jasius, black



Morpho helenor montezuma, black



Salamis parhassus pink, black



Salamis parhassus green, black



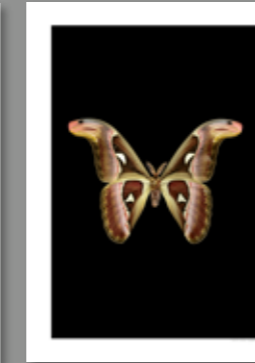
Celosterna pollinosa sulphurea, black



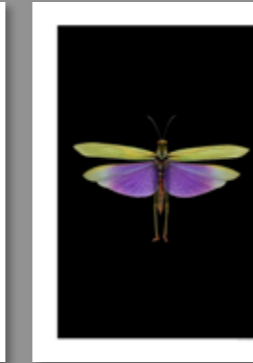
Lochmaeocles tessellatus, black



Rosenbergia gilmour, black



Atlas attacus, black



Lophacris cristata, black

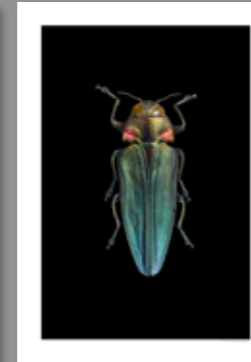
BEST SELLER



Meccynorrhina oberthuri, black



Chrysin strasseni, black



Belionota prasina, black

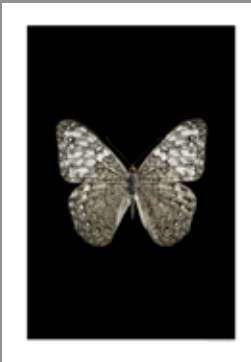


Lampropepla rothschildi, black

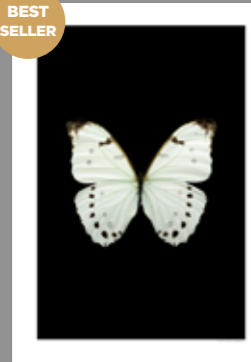


Beetles collage, black

BEST SELLER



Hamadryas amphichloe, black



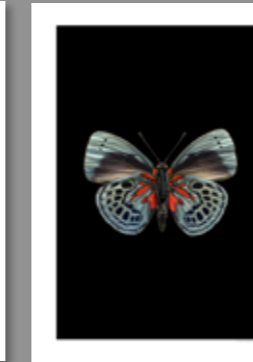
Morpho luna, black



Lepidiota stigma, black



Pieris brassicae, black



Asterope leprieuri, black

BLACK BACKGROUND

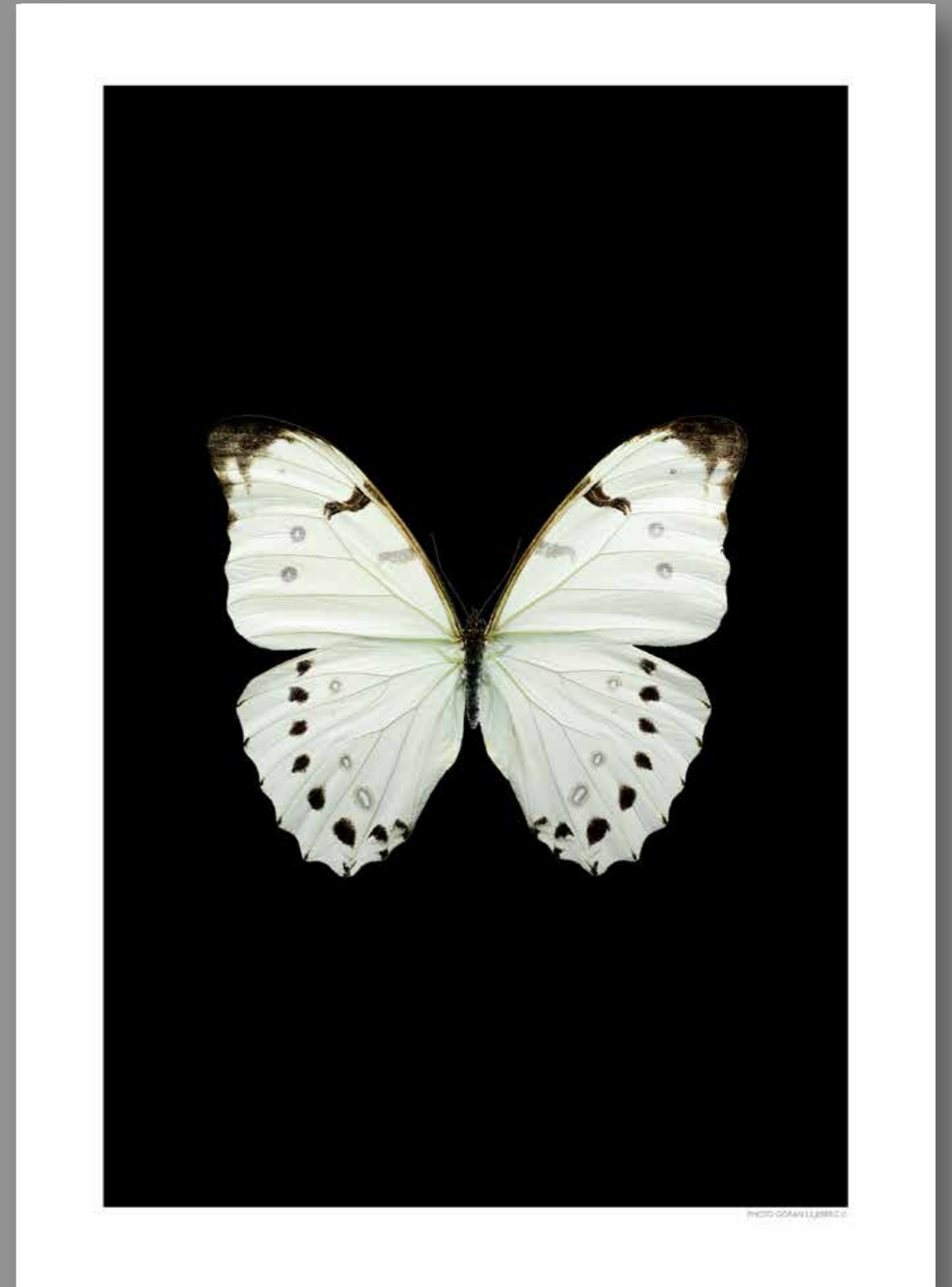
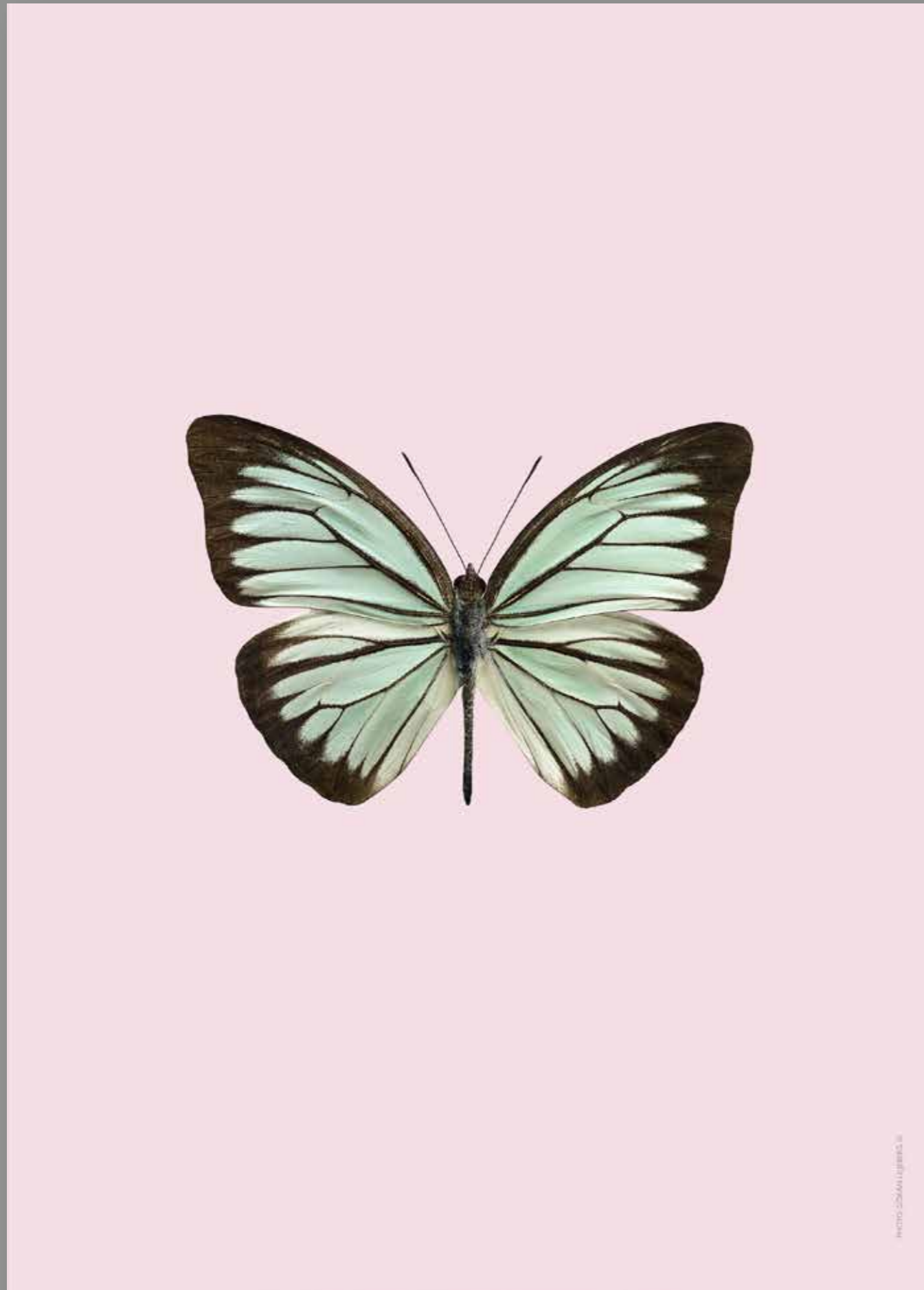


PHOTO: GÖRAN LUNDBERG

PASTEL BACKGROUND



www.stokart.com

PASTEL BACKGROUND

<p>NEW</p> <p><i>Pastels - yellow</i></p>	<p>NEW</p> <p><i>Pastels - pink</i></p>	<p>NEW</p> <p><i>Pastels - mint green</i></p>	<p>BEST SELLER</p> <p><i>Pink moths, green</i></p>	<p><i>Blue wings, green</i></p>
<p>NEW</p> <p><i>Pastels - purple</i></p>	<p>NEW</p> <p><i>Pastels - baby blue</i></p>	<p>NEW</p> <p><i>Pastels - coral</i></p>	<p><i>Fritillary butterflies, green</i></p>	<p>BEST SELLER</p> <p><i>White wings, green</i></p>
<p>NEW</p> <p><i>Pastels bug - pink</i></p>	<p>NEW</p> <p><i>Pastels bug - baby blue</i></p>	<p>NEW</p> <p><i>Pastels bug - yellow</i></p>	<p><i>Charaxes jasius, green</i></p>	<p><i>Atlas moths, green</i></p>
<p>NEW</p> <p><i>Pastels bug - mint green</i></p>	<p>NEW</p> <p><i>Pastels bug - purple</i></p>	<p>NEW</p> <p><i>Pastels bug - coral</i></p>	<p><i>Automeris io, green</i></p>	

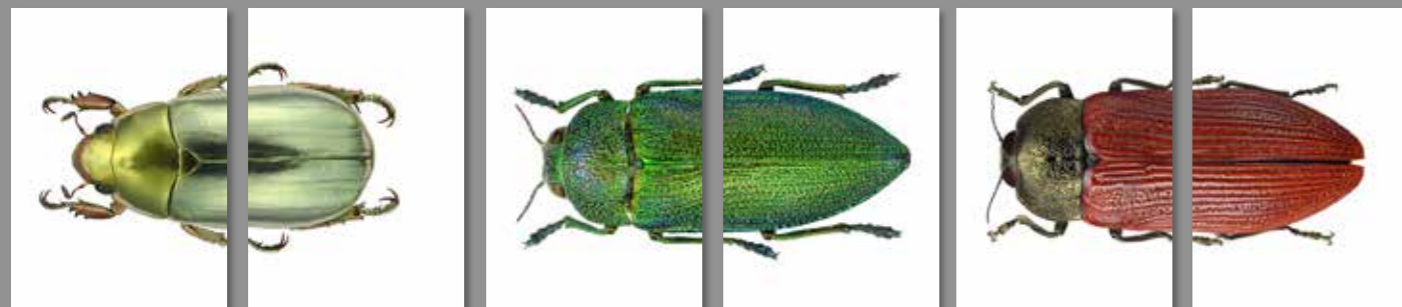
HALF & HALF



Leucoma salicis, half left *Leucoma salicis, half right* **BEST SELLER** *Spilosoma lubricipeda, half left* **BEST SELLER** *Spilosoma lubricipeda, half right* *Brahmaea wallichii, half left* *Brahmaea wallichii, half right*

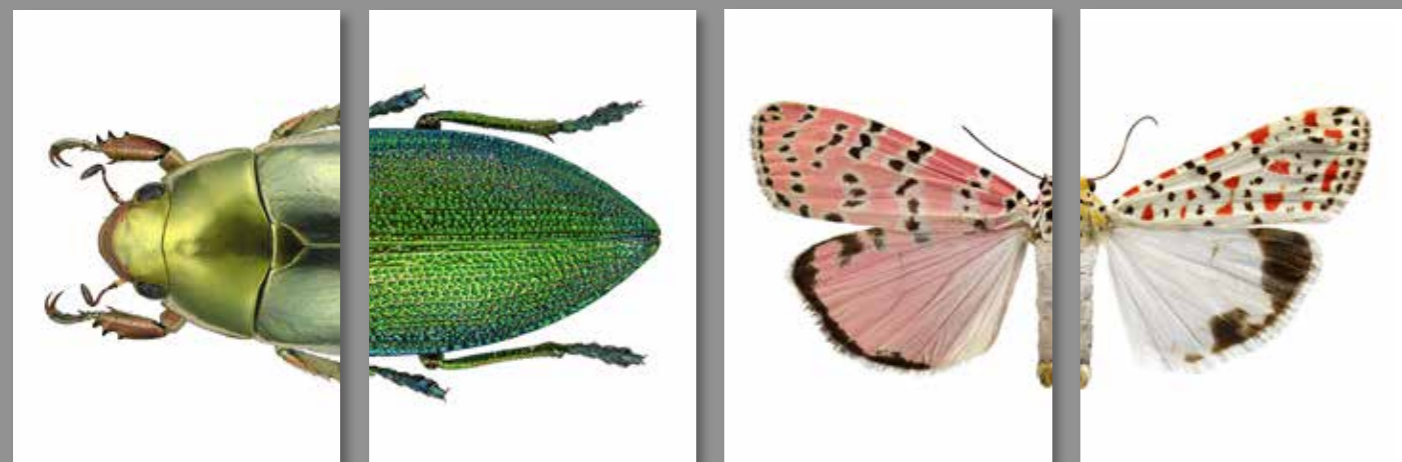


Arctia caja, half left *Arctia caja, half right* *Utethesia pulchella, half left* *Utethesia pulchella, half right* **BEST SELLER** *Utethesia ornatrix bella, half left* **BEST SELLER** *Utethesia ornatrix bella, half right*



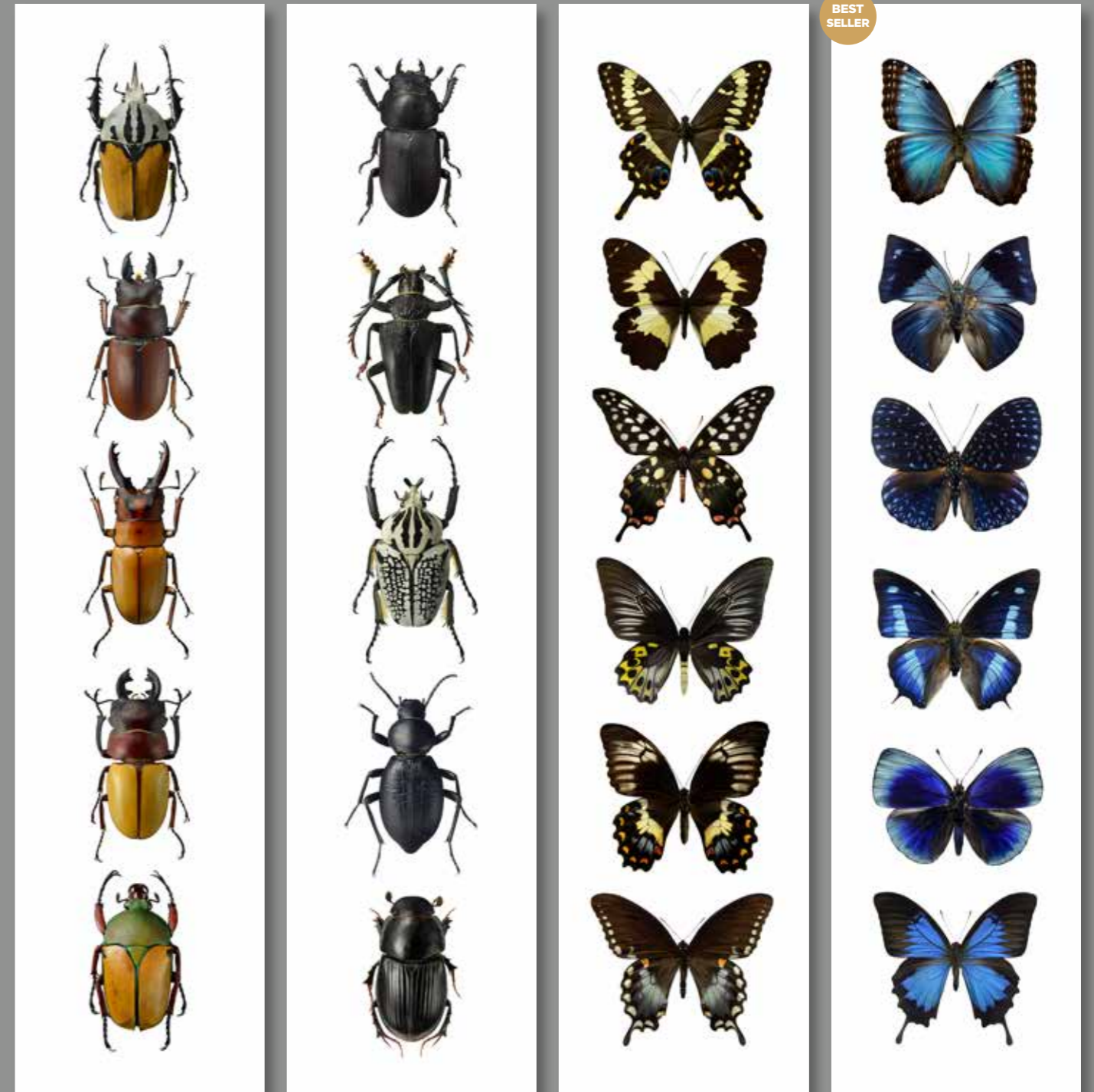
Chrysina strasseni, half left *Chrysina strasseni, half right* *Perotis unicolor, half left* *Perotis unicolor, half right* *Temognatha chalcodera, half left* *Temognatha chalcodera, half right*

Our split prints (called diptych) are available in size A4 on white background. Get one half or both together. Or why not mix them!



Chrysina strasseni, half left *Perotis unicolor, half right* *Utethesia ornatrix bella, half left* *Utethesia pulchella, half left*

OBLONG FORMAT



Oblong, rusty red beetles *Oblong, black beetles* *Oblong, brown butterflies* **BEST SELLER** *Oblong, midnight blue butterflies*

Our oblong prints are available in size 16x70 cm, they are packed in labeled tubes. Perfect for narrow wall spaces! We provide frames for them on offer.

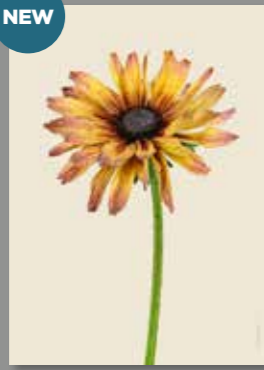
BOTANICALS

Late summer florals



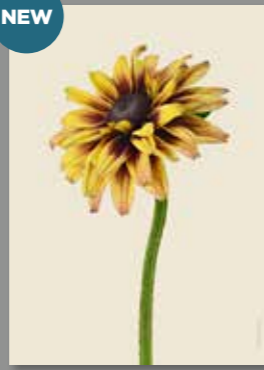
NEW

Giant Angelica
Angelica gigas



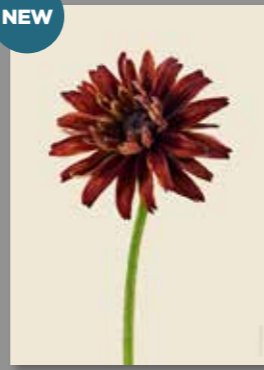
NEW

Rudbeckia hirta, amber
Rudbeckia hirta



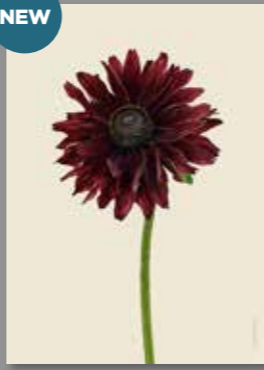
NEW

Rudbeckia hirta, yellow
Rudbeckia hirta



NEW

Rudbeckia hirta, rusty red
Rudbeckia hirta



Rudbeckia hirta, burgundy
Rudbeckia hirta



NEW

Sunflower, bronze
Helianthus



NEW

Sunflower, dusty amber
Helianthus



NEW

Sunflower, rusty red & amber
Helianthus



NEW

Sunflower, tawny brown
Helianthus



NEW

Sunflower, muave
Helianthus



NEW

Coneflower, yellow
Echinacea paradoxa



NEW

Coneflower, tangerine
Echinacea

Our botanical range is quite new and something we are developing to be a larger part of our collection. They are photographed with the same macro technique as our bugs so they are highly detailed and in supreme quality. We plan to release new botanical prints through out the year so keep your eyes open...! They come either on plain white background or on a darker shade of tinted background that is printed edge to edge (like shown here).

BOTANICAL ART WALL



PHOTO: ÖSTLINGHS

BOTANICALS
Dried & Withered



BOTANICALS
Dried & Withered

BEST SELLER



Martagon lily
Lilium martagon



Acorns
Quercus



Lilac, withered
Syringa vulgaris



Iris
Irideae



Iris with seeds
Irideae

BEST SELLER



Bear's Breeches
Accantus



Wild teasel, withered
Dipsacus fullonum



The European larch
Larix decidua



Purple Coneflower, withered
Echinacea purpurea

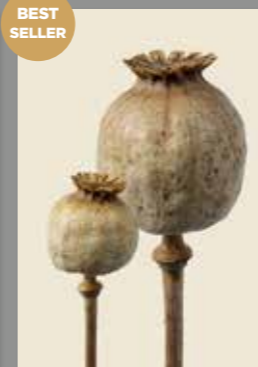


Scots pine
Pinus sylvestris

BEST SELLER



Poppy pod
Papaver



Poppy pods
Papaver



Silver Ghost
Eryngium giganteum



Everlasting Flower
Helichrysum bracteatum



Everlasting Flower, side
Helichrysum bracteatum

BEST SELLER



Velvet leaf
Abutilon theophrasti



Cattails
Typha angustifolia



Pincushion protea
Leucospermum cordifolium



Protea neriifolia

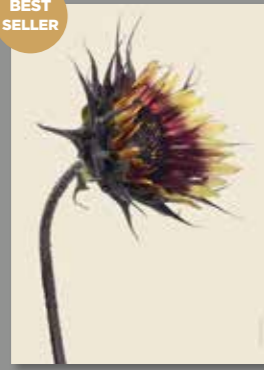


Baxter's banksia
Banksia baxteri

BOTANICALS
Wilting & late summer florals



BEST SELLER



Sunflower bud
Helianthus

Sunflower bursting
Helianthus

Sunflower side
Helianthus

Sunflower front
Helianthus

Dahlia, wilting
Dahlia



BEST SELLER



Purple Coneflower, Alba Echinacea purpurea

Purple Coneflower, Pink tip Echinacea purpurea

Purple Coneflower Echinacea purpurea

Purple Coneflower, wilting Echinacea purpurea

Pale Purple Coneflower Echinacea pallida



BEST SELLER



Blue globe thistle Echinops bannaticus

Bull thistle Cirsium vulgare

Wild teasel, bud Dipsacus fullonum

Wild teasel, blooming Dipsacus fullonum

Wild teasel, wilting Dipsacus fullonum



BEST SELLER



NEW

NEW

Common burdock Arctium minus

Creeping thistle Cirsium arvense

Lavender Lavandula

European beech Fagus sylvatica

Wild teasel three buds, withered Dipsacus fullonum

BOTANICALS
Wilting & late summer florals



PHOTO: SHIRAZI/ISTOCK

MUSHROOMS



Amanita muscaria

PHOTO: GÖRAN LARSSON ©

MUSHROOMS

BEST SELLER



Amanita muscaria, trio



Amanita muscaria, side



Amanita muscaria



Amanita muscaria, lamella



Cortinarius rubellus



Lactarius torminosus, duo



Lactarius torminosus



Coprinus comatus



Coprinus comatus, side



Coprinus comatus, duo

BEST SELLER



Lycoperdon perlatum



Cantharellus cibarius

BEST SELLER



Craterellus tubaeformis, duo

BEST SELLER



Craterellus tubaeformis, lamella



Craterellus tubaeformis

Our mushroom range comes on three different backgrounds; either on a plain white background, on a tinted background like our insects with the scientific name printed on it or on a tinted background that is printed edge to edge with no name printed. Goes great together with our fall range for that autumn feel.

BOTANICALS

Autumn leaves, berries & pansies



Maple, amber
Acer platanoides



Maple, orange
Acer platanoides



Maple, burgundy
Acer platanoides



Virginia Creeper
Parthenocissus
quinquefolia



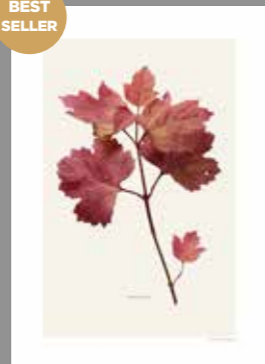
Rowan berries
Sorbus aucuparia



Alumroot coral bells
Heuchera



Japanese knotweed
Fallopia japonica



Guelder rose
Viburnum opulus



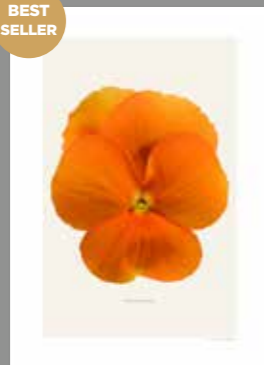
Cotoneaster
Cotoneaster



Black chokeberry
Aronia melanocarpa



Pansy, lilac & milky white
Viola x wittrockiana



Pansy, orange
Viola x wittrockiana



Pansy, lavender
Viola x wittrockiana



Pansy, yellow & plum
Viola x wittrockiana



Pansy, purple & ivory
Viola x wittrockiana



Pansy, deep purple
Viola x wittrockiana



Pansy, yellow & lilac
Viola x wittrockiana



Pansy, light lilac
Viola x wittrockiana



Pansy, purple
Viola x wittrockiana



Pansy, lilac & white
Viola x wittrockiana

BOTANICALS

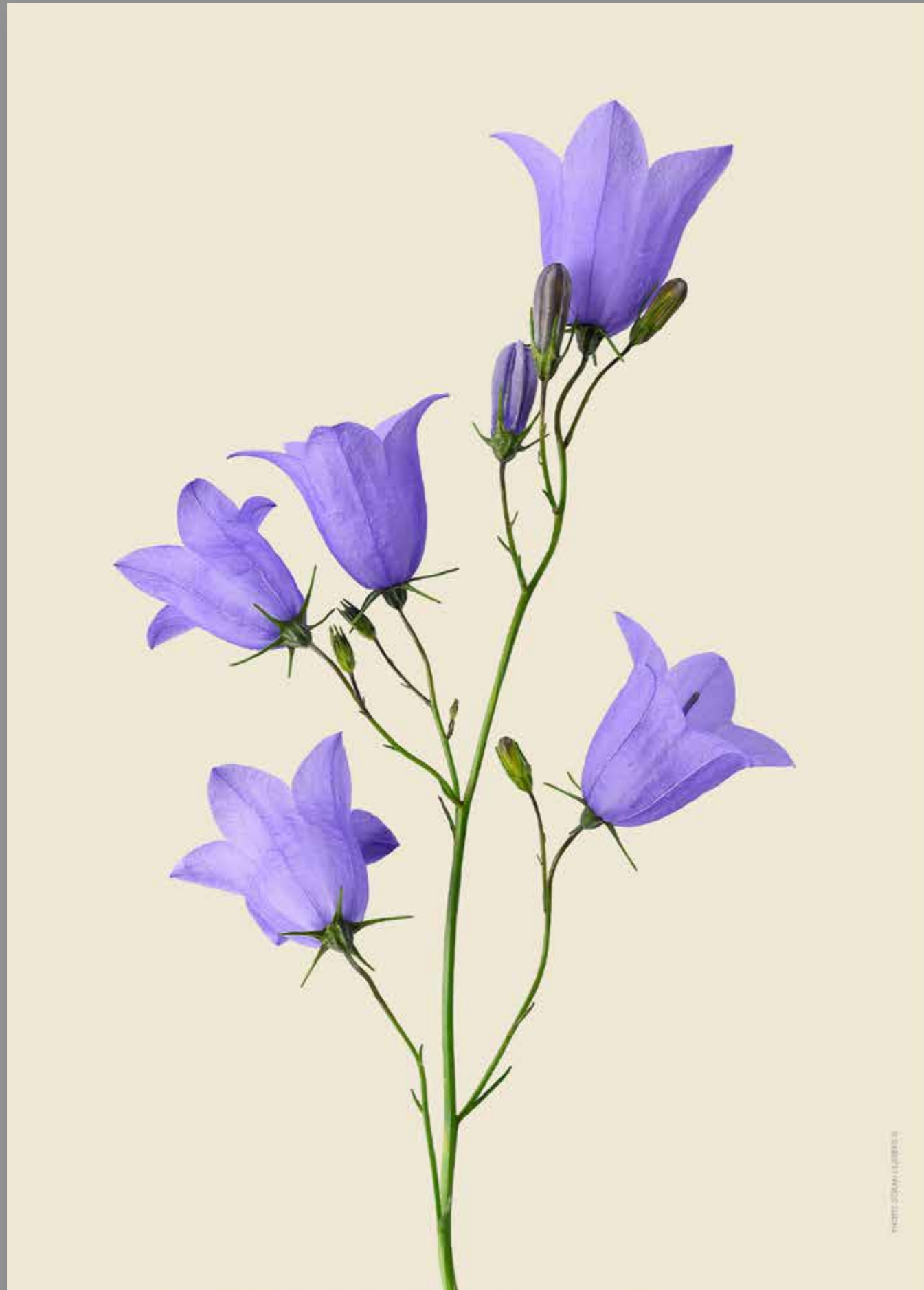
Autumn leaves & berries



Sorbus aucuparia

PHOTO: GÖRAN LARSSON ©

BOTANICALS
Floral



BOTANICALS
Floral

BEST SELLER



Bluebell
Campanula rotundifolia

NEW



Bluebell, up close
Campanula rotundifolia

BEST SELLER



Lilac, flowers
Syringa vulgaris

BEST SELLER



Chicory
Cichorium intybus

NEW



Sea holly, duo
Eryngium maritimum

NEW



Sea holly
Eryngium maritimum

NEW



Sea holly - Blue glitter duo
Eryngium planum

NEW



Sea holly - Blue glitter
Eryngium planum



Chicory, solitaire
Cichorium intybus



Cornflower
Centaurea cyanus



Cornflower, bowed
Centaurea cyanus



Cornflower, side
Centaurea cyanus

BEST SELLER



Cornflower, duo
Centaurea cyanus

NEW



Cornflower & Corn poppy
Centaurea cyanus
Papaver rhoeas

NEW



Sweet pea, pink
Lathyrus odoratus

NEW



Sweet pea, light pink
Lathyrus odoratus

NEW



Sweet pea, duo
Lathyrus odoratus

NEW



Sweet pea, salmon
Lathyrus odoratus



Chequered lily
Fritillaria meleagris

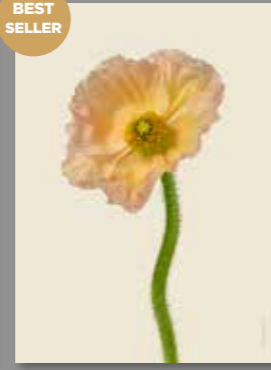
BOTANICALS
Floral



Poppies, pair
Papaver



Poppies, four
Papaver



Poppy, creamy blush
Papaver



Poppy, soft pink - side
Papaver



Poppy, soft pink
Papaver



Poppy, sun yellow
Papaver



Poppy, pink
Papaver



Poppy, red
Papaver



Corn poppy, red
Papaver rhoeas



Poppy, silk pink
Papaver rhoeas



Poppy, coral
Papaver



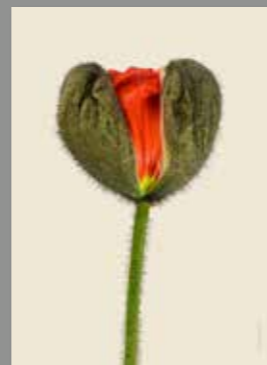
Poppy, coral - side
Papaver



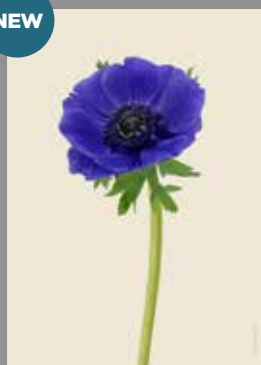
Poppy bud, sun yellow
Papaver



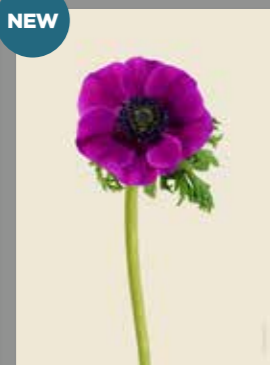
Poppy bud, soft pink
Papaver



Poppy bud, red
Papaver



Anemone, indigo blue



Anemone, purple



Anemone, scarlet

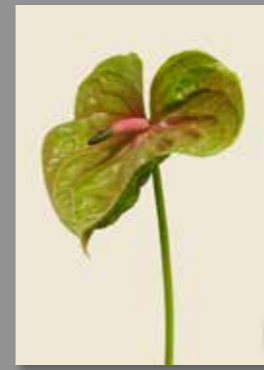


Anemone, patchy pink



Anemone, pink duo

BOTANICALS
Floral



Anthurium, green



Anthurium, rose green



Anthurium, blood red



Anthurium, blood orange



Anthurium, pink orange



Anthurium, burgundy



Anthurium, plum red



Anthurium, violet



Anthurium trio



Anthurium duo



Anemone, pink duo Here on white background



Anthurium trio Here on white background

CRYSTALS & MINERALS



Cavansite on stilbite



Pyrite in quartz & sphalerite

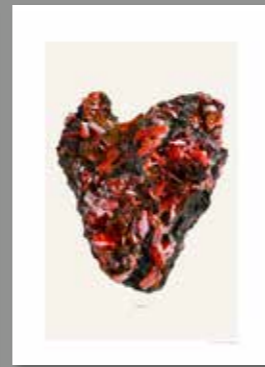


Chalcopyrite



Emerald in quartz

BEST SELLER



Crocoite



Cobaltoan dolomite



Celestine



Crystal, landscape



Fluorite, landscape



Creedite, landscape



Pyromorphite



Fluorite



Rosasite



Celestine, landscape

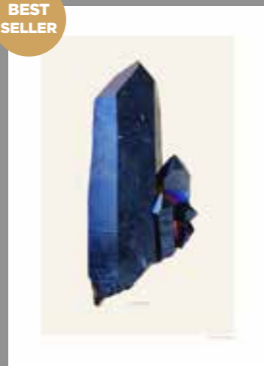


Creedite



Kyanite in quartz

BEST SELLER

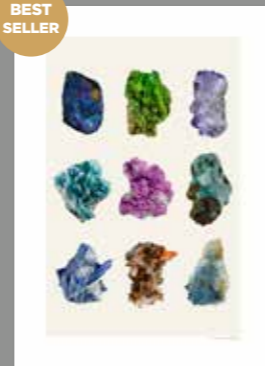


Cobolt quartz

BEST SELLER



Crystal

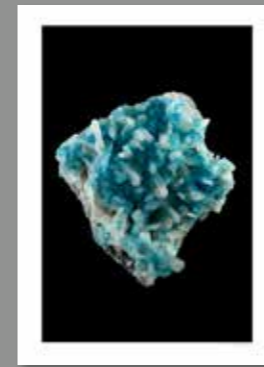


Mineral collage

BEST SELLER

CRYSTALS & MINERALS

Black background

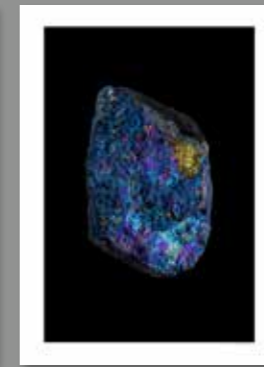


Cavansite on stilbite



Pyrite in quartz & sphalerite

BEST SELLER



Chalcopyrite



Emerald in quartz



Crocoite



Cobaltoan dolomite



Celestine



Crystal, landscape

BEST SELLER



Fluorite, landscape

BEST SELLER



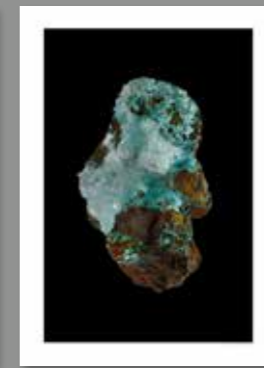
Creedite, landscape



Pyromorphite



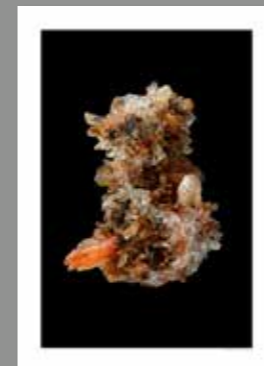
Fluorite



Rosasite



Celestine, landscape



Creedite

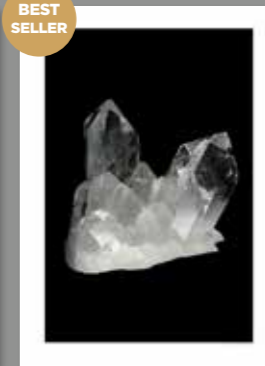


Kyanite in quartz

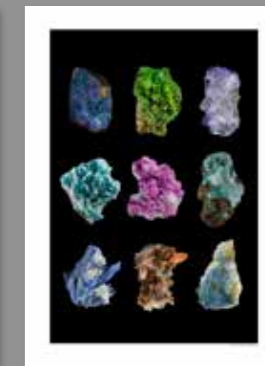


Cobolt quartz

BEST SELLER



Crystal



Mineral collage

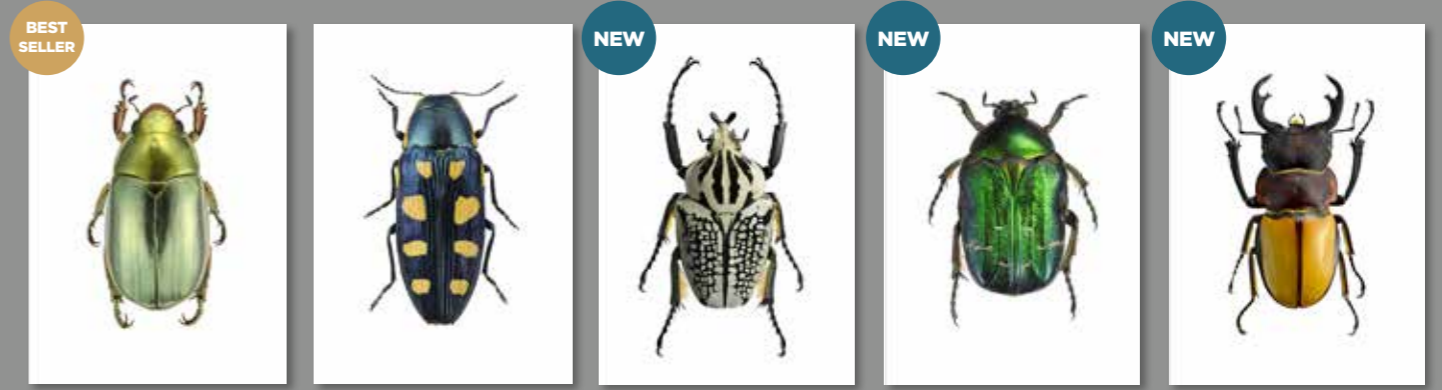
GREETING CARDS



Our *greeting cards* are blank inside with no pre-printed message. They come in sets of 12, including a ribbed brown envelope from recycled paper. Size: 12x17 cm.



GREETING CARDS



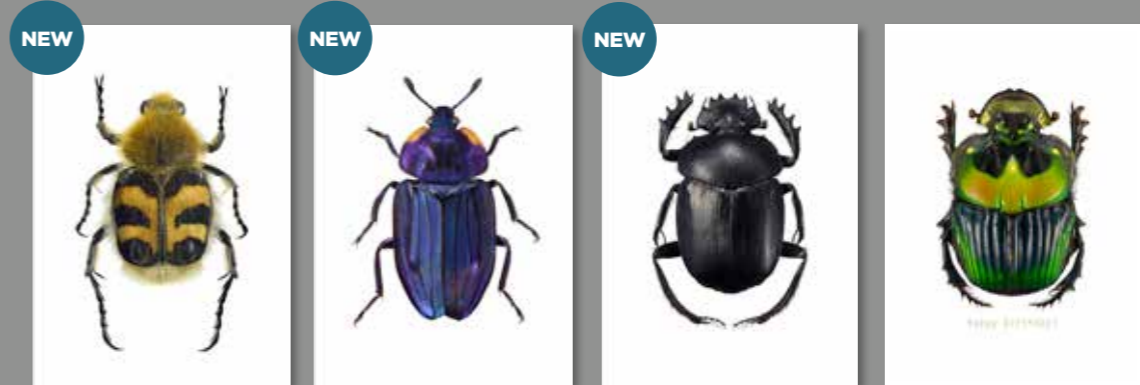
Card 040

Card 042

Card 120

Card 122

Card 121

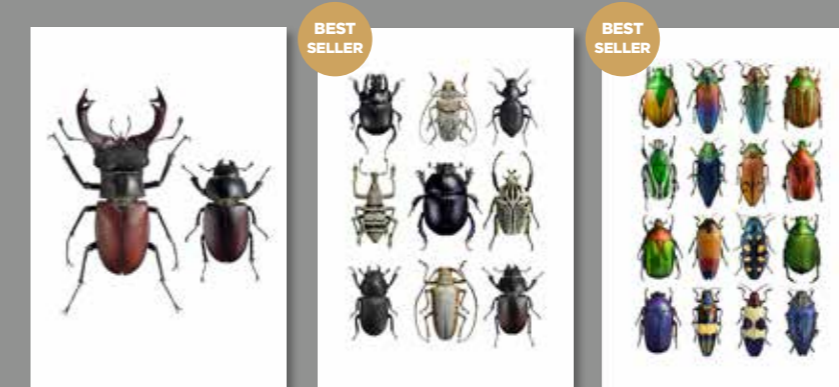


Card 117

Card 118

Card 119

Card 079 - Happy Birthday!



Card 061

Card 013

Card 013

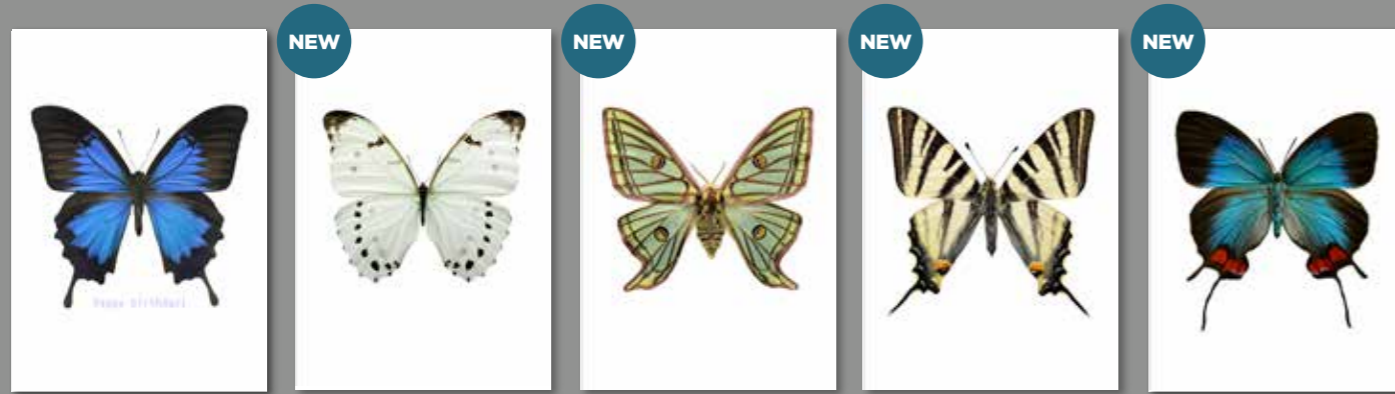


Card 067

Card 068

Card 069

GREETING CARDS



Card 078 - Happy Birthday!

Card 115

Card 111

Card 112

Card 110



Card 113



Card 114



Card 076



Card 077



Card 018



Card 104



Card 004



Card 009



Card 017



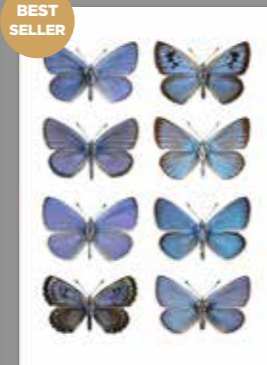
Card 035



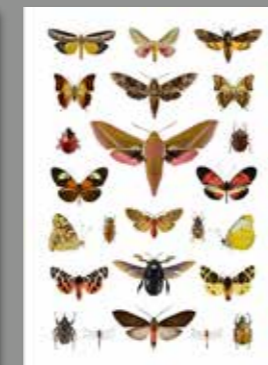
Card 005



Card 001



Card 026

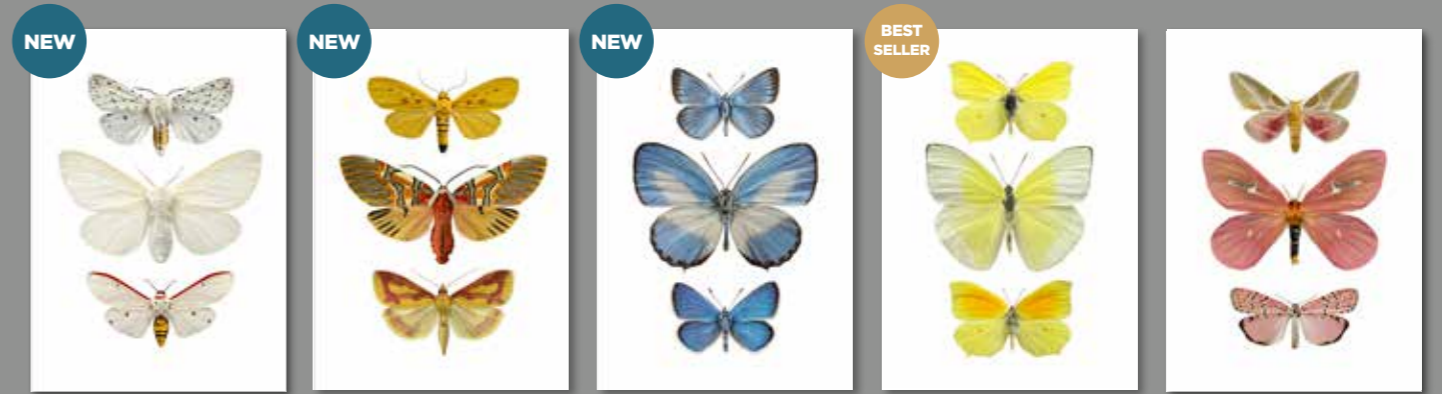


Card 081



Card 033

GREETING CARDS



Card 105

Card 106

Card 107

Card 074

Card 073



Card 108



Card 109



GREETING CARDS



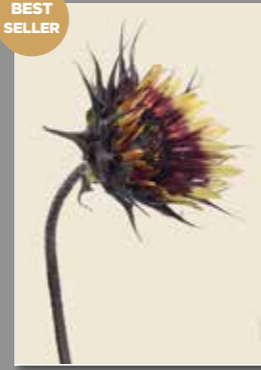
Card 085



Card 086



Card 087



Card 082



Card 100



Card 083



Card 088



Card 089



Card 090



Card 091



Card 084



Card 099



Card 095



Card 096



Card 092



Card 093

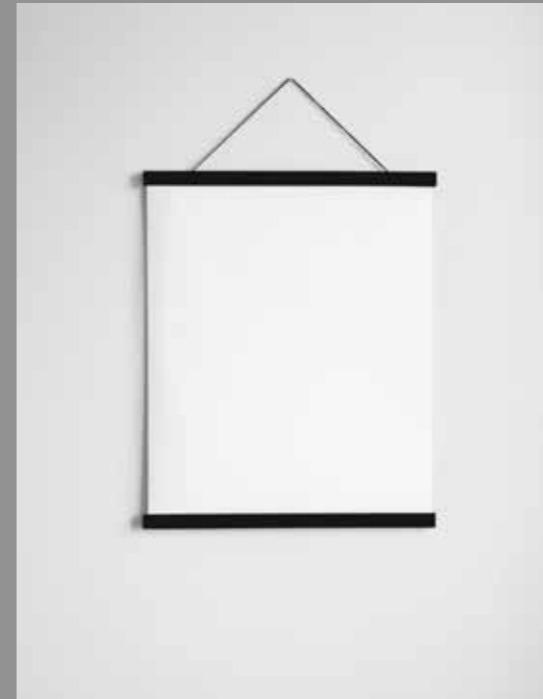


Card 097



Card 098

FRAMES & PRINT HANGERS



Magnetic hanger - black

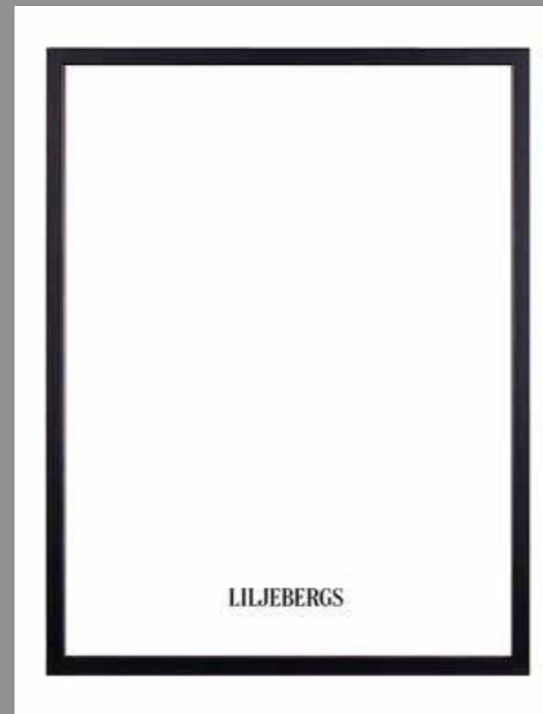


Magnetic hanger - oak

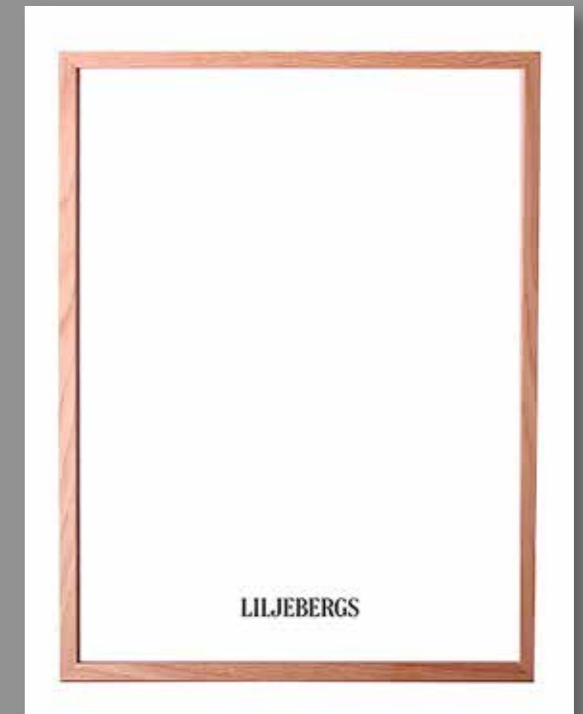
The frames are in natural solid oak or in black painted wood, they are all with acrylic (plexi) glass. The MDF backing is attached to the frame with metal clips and it is equipped with two hangers. Size A4 also have a back support for standing. The frame is 18 mm thick with a 12 mm wide profile. All our frames are FSC-certified wood products produced from well-managed forests and/or recycled materials.

The magnetic hangers comes in natural solid oak or black painted wood and are attached to the print with magnets. Mounted they are 10 mm thick and 20 mm wide.

The mini frames are black painted wood with normal glass and has a back support for standing. The frame is 12 mm thick with a 12 mm wide profile.



Black frame



Oak frame

CONTACT

www.liljebergs.nu
info@liljebergs.nu
+46 - 703 - 42 42 86

PHOTO & PRINT STUDIO

LILJEBERGS
Gillbergavägen 11
619 95 Västerljung
SWEDEN

SOCIAL MEDIA

Instagram
[@liljebergs](#) [#liljebergs](#)
Facebook
facebook.com/liljebergs
Pinterest
pinterest.com/liljebergs

LILJEBERGS