

# RUG'SOCIETY

THE DELUXE OF PAST & PRESENT



— THE TOP —  
**LUXURY**  
— *tapestry* —

# MERMAID

With a creation without limits, Rug'Society has developed the Mermaid Rug, the fourth of lounge collection. Inspired by the feminine representation of the sea, which transmit us her delicacy and her strength.



[DISCOVER MORE](#)





## DECÔ

With an ultramodern style, Rug'Society has created the Dêco rug, that represents the neutral collection in the best way possible. A rug full of glamour and sophistication which you won't be able to resist.



[DISCOVER MORE](#)



# TERRAZZO

Terrazzo, a novelty from Rug'Society where we can see the graphics and patterns different and unusual. The power of neutral colors and organic tones will make you feel inspired.

[DISCOVER MORE](#)



# HERON

The Heron rug designed by Rug'Society it's a 100% handmade product. With a representation of animal print, inspired by the nature spirit, this rug will present you with the fun of this world.

[DISCOVER MORE](#)

# BAUHAU

Based on the language of the German avant-garde movement - Bauhaus, was one of the greatest and most important expressions of what is called Modernism in design and architecture. A journey through the history of the Bauhaus is style, modernity and ideology, which can be in your living room.



[DISCOVER MORE](#)





# IMPERIAL SNAKE

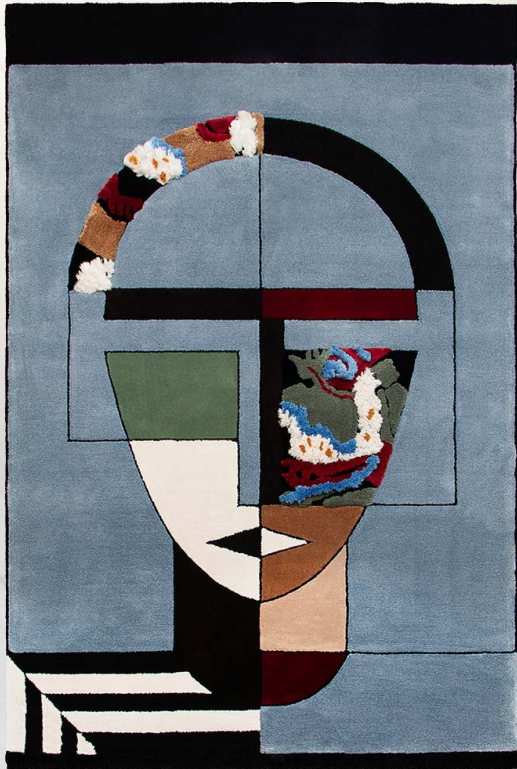
The Imperial Snake stands out for its creative design. With its warm and natural colors, it will fit everywhere you want.



[DISCOVER MORE](#)

# MIRA

In a cubist language, Mira is the representation of Cleopatra, where life emerges in the form of color, taking us on a journey through the communion of cultures and style. This rug, hand tufted in botanical silk and mohair, deconstructs classic concepts with solid and simple plans, representing the influence of history in contemporary design.



[DISCOVER MORE](#)







## SIMBA

An image conceived through the combination of several graphic elements, the mixture of patterns makes the carpet an exclusive, different and irreverent piece. With a very uniform palette of colors, Simba stands out for the harmony between different elements, a perfect match between the rigid shapes and the curves.



[DISCOVER MORE](#)

# LUCY

With unique lines and unmistakable shapes, Lucy is a rug inspired in geometrical shapes and shades of pastel pink that make this astonishing lounge piece.



[DISCOVER MORE](#)





## GOLDEN BUGS

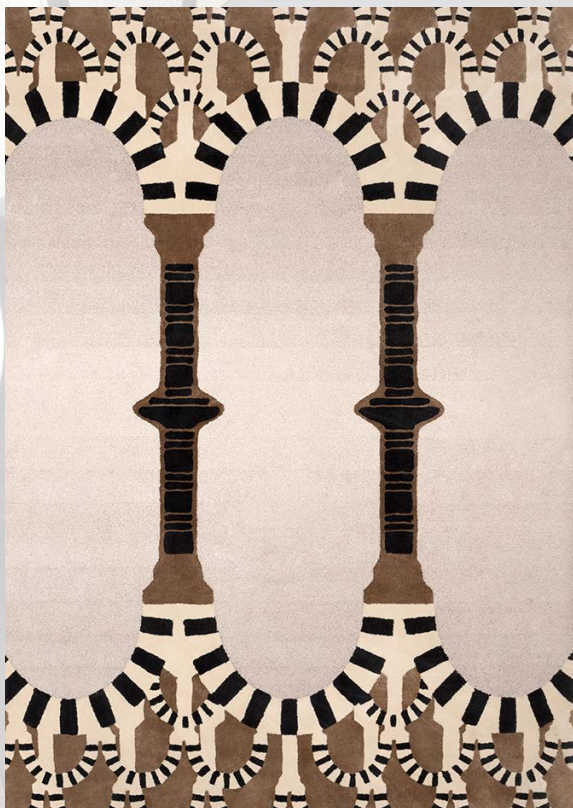
Present on the earth for millions of years, bugs are considered sacred by many cultures. This fantastic round rug, decorated with a stylized chain, has a very refined design, thanks also to the cream touch which makes it stunning.



[DISCOVER MORE](#)

# APOLLO

With its reference to the columns and arches dating back to antiquity, the Apollo rug is made up of alternating linearity and movement and a play of light and dark colors, that make it elegant and sophisticated.



[DISCOVER MORE](#)





## MIRA[AGE] CABINET

\*Partner brand HOMES'SOCIETY

The MIRA[AGE] cabinet results in the culmination of emotions and self-expression. Our most experienced craftsmen were challenged to give life to a piece that mixes a various range of materials and embodies different techniques. In this cabinet all the details count and together they create a unique and exclusive piece.

[DISCOVER MORE](#)



# ALICE SUSPENSION LAMP

\*Partner brand HOMES'SOCIETY

Alice Suspension Lamp was inspired in Alice's Adventures in Wonderland, Lewis Carroll's masterpiece. It is a hexagon shaped lamp that can be sold individually or within a set. It can be entirely customized according to the client's taste.

DISCOVER MORE

