

Ethnicraft

ACCESSORIES



FALL 2020 NOVELTIES

*We create the foundations of your home,
to inspire the stories of your life.*

For the past 25 years, we have been creating timeless furniture and accessories manufactured from quality materials. True to our values, we have maintained our goal to produce good design, distinguished by authenticity, simplicity and quality, as well as creativity and innovation. We rely on our unique expertise to create singular designs ready to embellish your daily life durably. We create collections for every room of the house: from the furniture that defines the purpose of a space to the objects that layer it with meaning. Nothing excites us more than seeing how people love and use our products in the story of their lives.







All of our designs are intentionally timeless. They withstand trends and associate well with different styles, and they can be passed on from one home to the next, carrying over the stories of one lifetime into another.



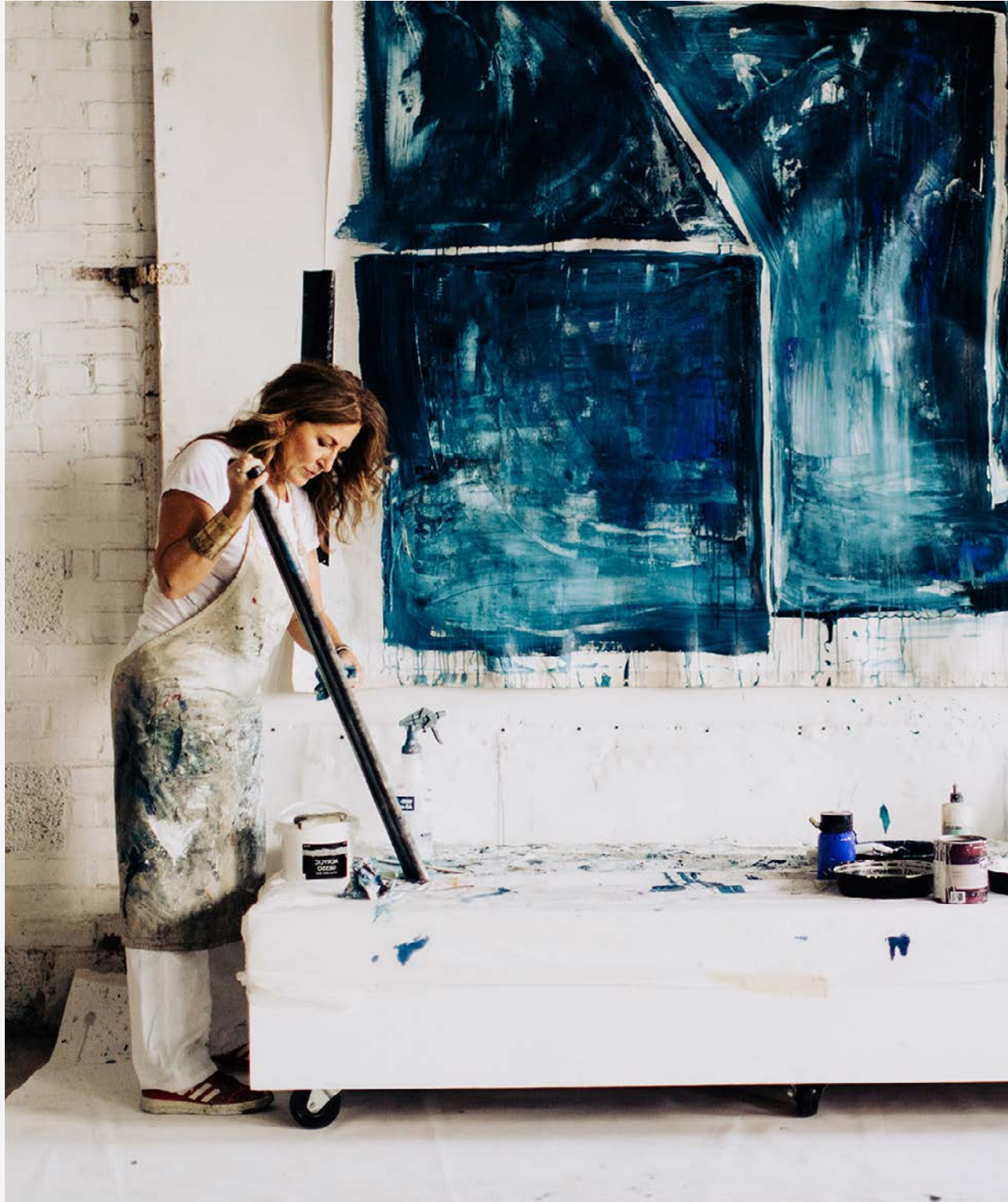
10	LOOKBOOK
40	TRAYS
52	PERFECT COMBINATION
54	TRAY TABLES
56	HOME TEXTILES
66	CARE INSTRUCTIONS



TRAY RIM COLOR RANGE

-  **WALNUT ^{NEW}**
This icon indicates a walnut rim.
-  **DARK WOOD**
This icon indicates a dark wood rim.
-  **LIGHT WOOD**
This icon indicates a light wood rim.
-  **BLACK METAL**
This icon indicates a black metal rim.
-  **GOLD METAL**
This icon indicates a gold metal rim.
-  **BRONZE METAL**
This icon indicates a bronze metal rim.

Please refer to our website for more information:
www.ethnicraft.com

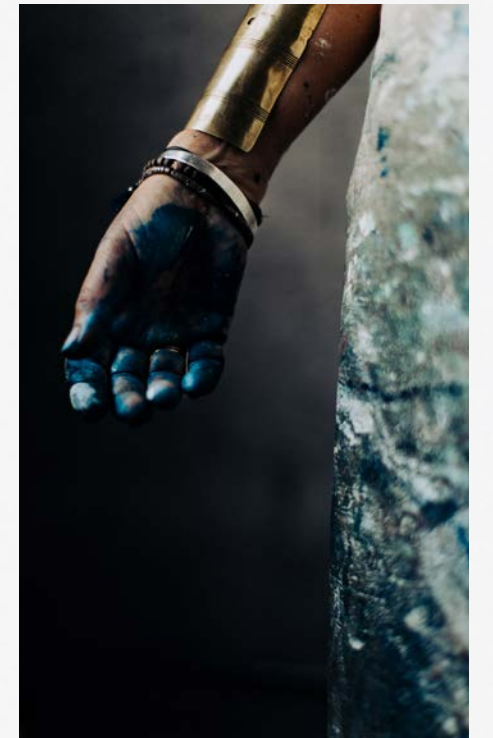


Designer

DAWN SWEITZER

The beginning of 2020 marked an exciting moment for Ethnicraft, as we officially merged with longtime partner and lifestyle brand Notre Monde. Together, we will keep doing what we do best: creating timeless furniture and sophisticated accessories. United as one, under the Ethnicraft name.

Notre Monde's beloved designer Dawn Sweitzer will be the main artistic mind behind the accessories. From her childhood in Ohio's great outdoors, her curiosity for life and her many travels around the globe, Dawn has collected images and sensations, which she now channels into her work as an artist without limitations. Her multiple inspirations have given rise to extremely rich pictorial compositions, based on abstract, complex and modern patterns, arranged into combinations and successive layers interacting with materials, colors, textures and finishes. Today, the artist uses her spacious studio, located in High Point, North Carolina, as a playground where she is free to experiment different techniques and explore a variety of mirrors, tables and home textiles for the Ethnicraft collection.





LINEAR FLOW TRAY & MYSTIC INK TEXTILE COLLECTIONS

Inspired by the ink drawings at the beginning of the design process, both the Linear Flow and Mystic Ink collections strike a curious balance within a shared palette. Centered around ink and pigment interaction with its medium, results in a truly distinctive finish. Complementary effects are revealed in unexpected ways.

Reminiscent of a riverbed's movement with reflective metallics can be seen in the tray organics, while the sketched and linear designs hint at hand drawn and painted patterns.

Mirroring the way ink reacts to handmade paper, the painterly forms come alive woven into textiles, offering an organic vibe with a graphic edge. Chocolate paired with the intensity of Yves Klein blue perfectly rounds off a classic collection with a twist.





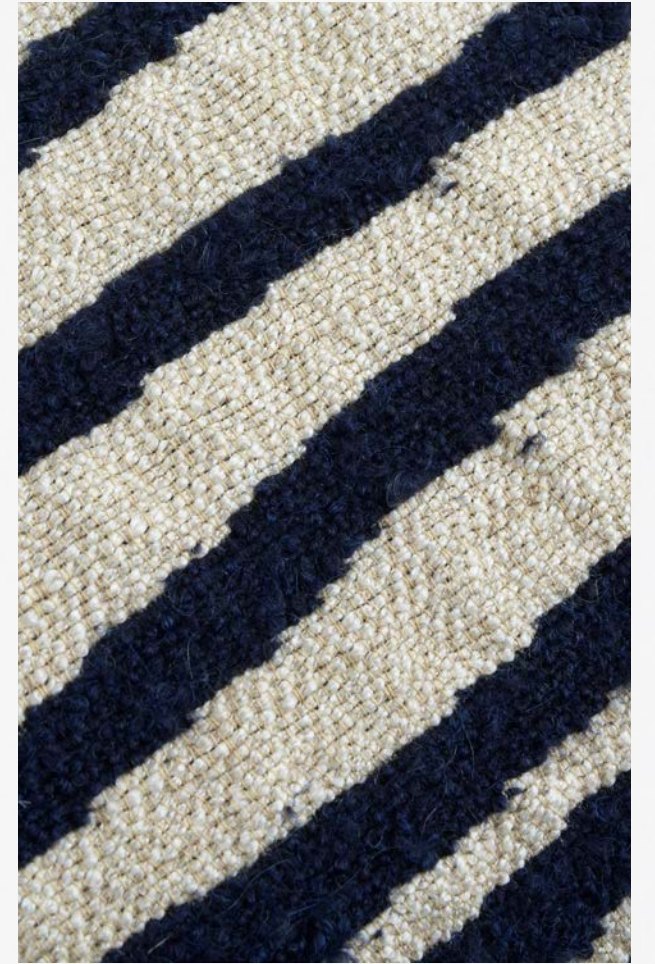


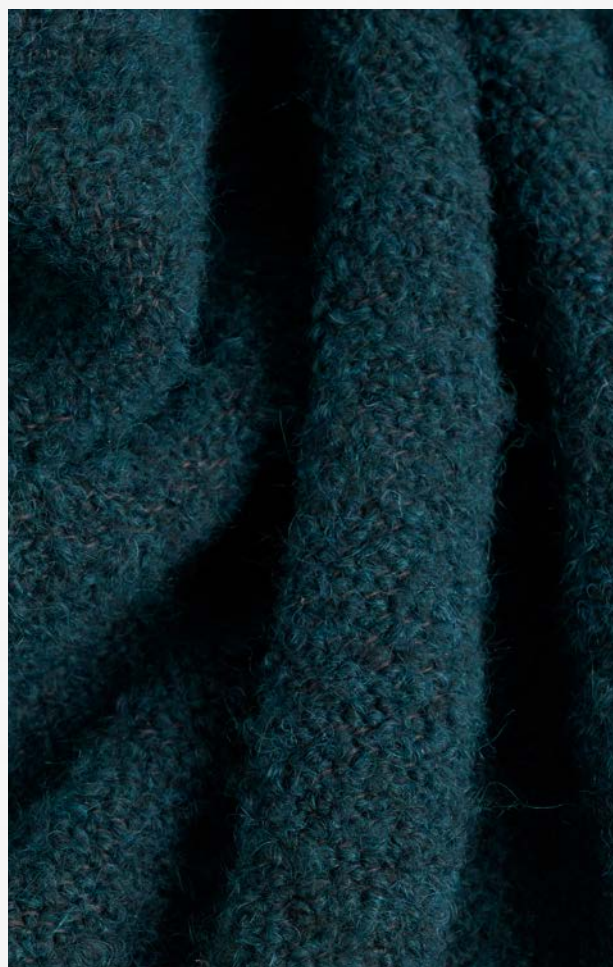
“The organics are reminiscent of a riverbed in their movement and reflective metallics. The sketched and linear designs are a perfect complement with the hand drawn and painted patterns. The common palette between the two creates the perfect balance for this collection.”

- Dawn Sweitzer, designer.













*“When ink and pigments hit the glass
it takes on a life of its own.”*

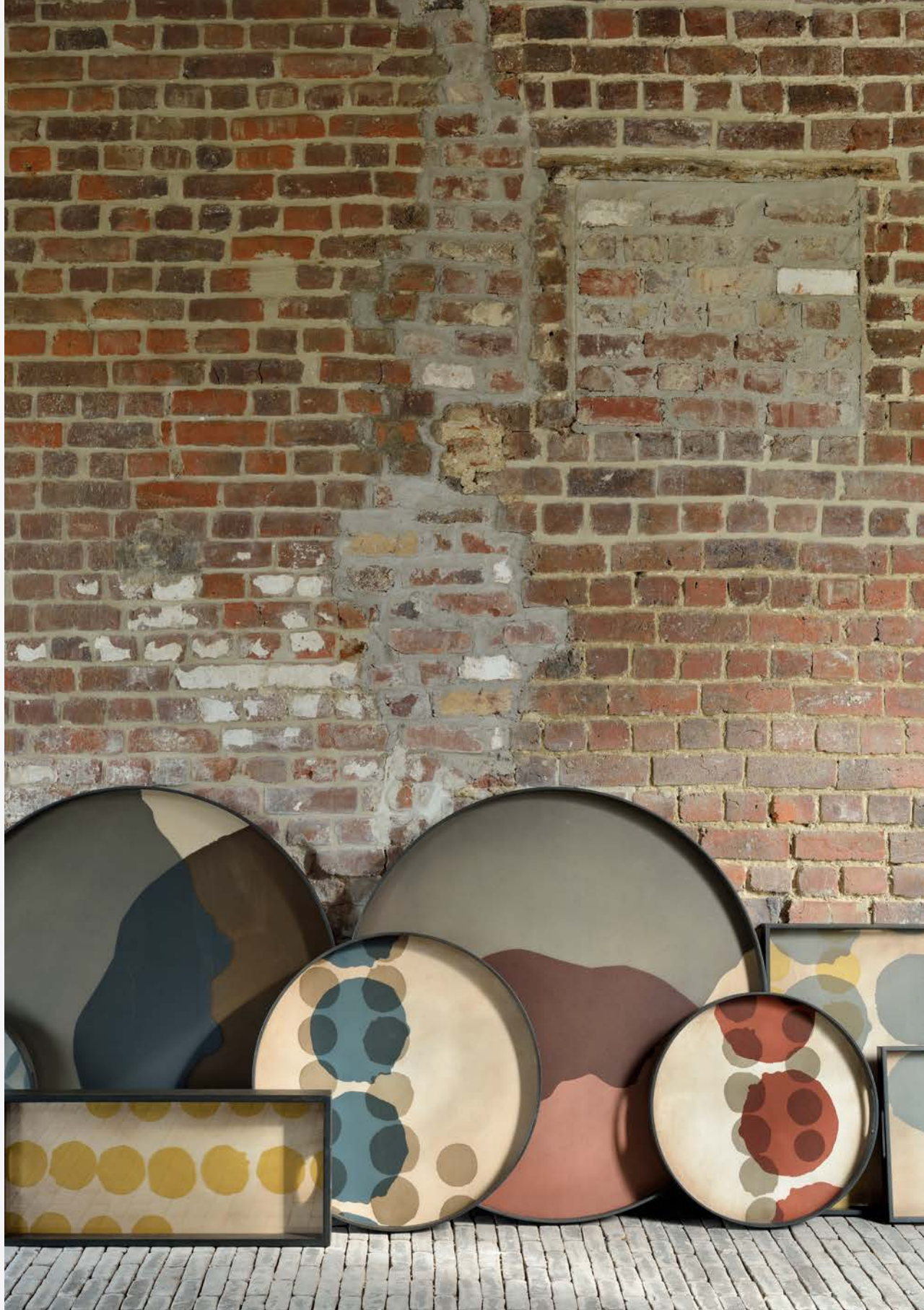
- Dawn Sweitzer, designer.











THE TRANSLUCENT SILHOUETTES

With new extra large sizes added, the Translucent Silhouettes tray collection artfully layers organic dots atop an aged surface, creating a sense of depth and allowing dynamic combinations to blossom. While the overall result is bold, the collection possesses certain lightness conveyed by the delicate inks and pigments.

PRODUCT OVERVIEW

For more detailed product information,
visit our website www.ethnicraft.com

Trays



TRANSLUCENT SILHOUETTES COLLECTION

PINOT COMBINED DOTS
Hand painted base with silk-screen printed glass and a wooden rim.

XL ROUND TRAY
20908 92 × 92 × 4 CM
36" × 36" × 1,6"



GRAPHITE COMBINED DOTS
Hand painted base with silk-screen printed glass and a wooden rim.

XL ROUND TRAY
20909 92 × 92 × 4 CM
36" × 36" × 1,6"





LINEAR FLOW COLLECTION

MIDNIGHT LINEAR SQUARES ●
Silk-screen printed glass and a wooden rim.

SMALL ROUND TRAY
20910 48 × 48 × 4 CM
19" × 19" × 1,6"



SLATE ORGANIC ●
Hand painted glass and a wooden rim.

SMALL ROUND TRAY
20911 48 × 48 × 4 CM
19" × 19" × 1,6"



INK LINEAR SQUARES ●
Silk-screen printed glass and a wooden rim.

LARGE ROUND TRAY
20912 61 × 61 × 4 CM
24" × 24" × 1,6"



GRAPHITE ORGANIC ●
Hand painted glass and a wooden rim.

LARGE ROUND TRAY
20913 61 × 61 × 4 CM
24" × 24" × 1,6"





SLATE LINEAR SQUARES ●
Silk-screen printed glass and a wooden rim.

XL ROUND TRAY
20914 92 × 92 × 4 CM
36" × 36" × 1,6"



WALNUT LINEAR SQUARES ●
Silk-screen printed glass and a walnut wooden rim.

MEDIUM RECTANGULAR TRAY
20915 69 × 31 × 5 CM
27" × 12" × 2"



NEW SHAPE
SLATE LINEAR SQUARES ●
Silk-screen printed glass and a wooden rim.

MEDIUM OBLONG TRAY
20916 71 × 36 × 3 CM
28" × 14" × 1"



NEW SHAPE
GRAPHITE ORGANIC ●
Hand painted glass and a wooden rim.

MEDIUM OBLONG TRAY
20917 71 × 36 × 3 CM
28" × 14" × 1"





NEW SHAPE
PUMPKIN SQUARES ●
 Silk-screen printed glass and a walnut wooden rim.

SMALL SQUARE TRAY
 20918 38 × 38 × 4 CM
 15" × 15" × 1.6"



NEW SHAPE
INK SQUARE ●
 Silk-screen printed glass and a walnut wooden rim.

SMALL SQUARE TRAY
 20919 38 × 38 × 4 CM
 15" × 15" × 1.6"



NEW SHAPE
INK SQUARES ●
 Silk-screen printed glass and a walnut wooden rim.

LARGE SQUARE TRAY
 20920 51 × 51 × 4 CM
 20" × 20" × 1.6"



NEW SHAPE
PUMPKIN SQUARE ●
 Silk-screen printed glass and a walnut wooden rim.

LARGE SQUARE TRAY
 20921 51 × 51 × 4 CM
 20" × 20" × 1.6"





NEW SHAPE
INK LINEAR SQUARES ●
 Silk-screen printed glass and a wooden rim.

VALET TRAY
 20929 42 × 24 × 3 CM
 16,5" × 9,5" × 1"



INK LINEAR SQUARES ●
 Silk-screen printed glass and a wooden rim.

VALET TRAY
 20922 30 × 30 × 3 CM
 12" × 12" × 1"



SLATE ORGANIC ●
 Hand painted glass and a wooden rim.

VALET TRAY
 20923 30 × 30 × 3 CM
 12" × 12" × 1"



GRAPHIC ORGANIC ●
 Hand painted glass and a wooden rim.

VALET TRAY
 20924 30 × 30 × 3 CM
 12" × 12" × 1"





CREAM CIRCLES ●
Silk-screen printed glass and a walnut wooden rim.

VALET TRAY
20925 30 × 30 × 3 CM
12" × 12" × 1"



ROYAL PALM ●
Silk-screen printed glass and a walnut wooden rim.

VALET TRAY
20926 30 × 30 × 3 CM
12" × 12" × 1"



ROYAL CIRCLES ●
Silk-screen printed glass and a walnut wooden rim.

VALET TRAY
20927 23 × 23 × 3 CM
9" × 9" × 1"



PUMPKIN CIRCLES ●
Silk-screen printed glass and a walnut wooden rim.

VALET TRAY
20928 23 × 23 × 3 CM
9" × 9" × 1"



Perfect Combination

Create a table that is uniquely yours by choosing one of our favorite tray combinations or by selecting your own matching pair of trays.

LARGE & XL TRAYS



20440 SLATE LAYERED DOTS
20909 GRAPHITE COMBINED DOTS



20439 OVERLAPPING DOTS
20908 PINOT COMBINED DOTS



20912 INK LINEAR SQUARES
20914 SLATE LINEAR SQUARES



20913 GRAPHITE ORGANIC
20914 SLATE LINEAR SQUARES

SMALL & LARGE TRAYS



20910 MIDNIGHT LINEAR SQUARES
20912 INK LINEAR SQUARES



20911 SLATE ORGANIC
20913 GRAPHITE ORGANIC

SQUARE TRAYS

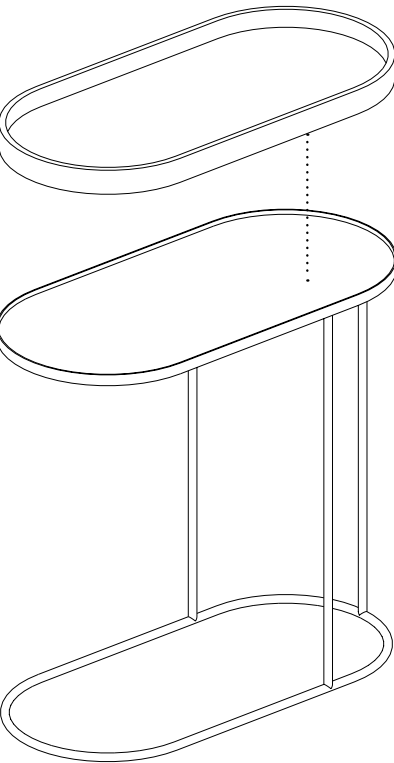


20918 PUMPKIN SQUARES
20921 PUMPKIN SQUARE



20919 INK SQUARE
20920 INK SQUARES

Tray Tables



TRAY SIDE TABLES

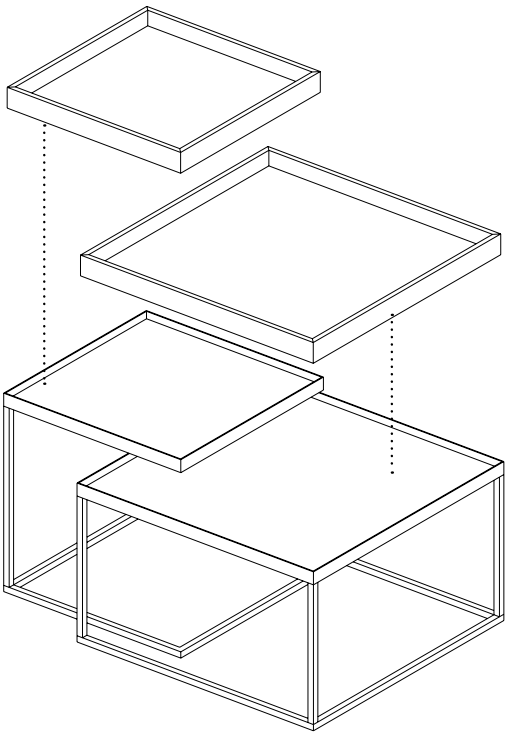
*trays to be ordered separately

NEW
OBLONG TRAY SIDE TABLE
Black metal frame and black tainted wood.

20790 69 × 33 × 65 CM
 27" × 13" × 25,5"

TRAY TABLE + OBLONG TRAY

medium tray 71 × 36 × 3 CM
 28" × 14" × 1"



NEW
SQUARE TRAY COFFEE TABLE SET
Black metal frame and black tainted wood.

20791 39 × 39 × 38 CM - 52 × 52 × 31 CM
 15" × 15" × 15" - 20" × 20" × 12"

TRAY TABLE + SQUARE TRAY

small tray 38 × 38 × 4 CM
 15" × 15" × 1.6"

large tray 51 × 51 × 4 CM
 20" × 20" × 1.6"



MYSTIC INK COLLECTION

WHITE LINEAR SQUARE
29% polyacryl - 27% cotton -
22% mohair - 22% polyamide

CUSHION
21057 45 × 45 CM
18" × 18"



WHITE LINES
29% polyacryl - 27% cotton -
22% mohair - 22% polyamide

CUSHION
21058 45 × 45 CM
18" × 18"



NAVY DOTS
29% polyacryl - 27% cotton -
22% mohair - 22% polyamide

THROW
21064 140 × 240 CM
55" × 94"



NAVY LINES
29% polyacryl - 27% cotton -
22% mohair - 22% polyamide

CUSHION
21059 45 × 45 CM
18" × 18"



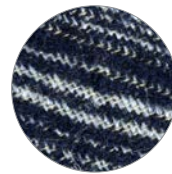


NAVY LINEAR DIAMONDS

29% polyacryl - 27% cotton -
22% mohair - 22% polyamide

CUSHION

21060 60 × 40 cm
24" × 16"



WHITE STRIPES

44% polyacryl - 23% linen -
15% cotton - 10% wool - 8% polyester

CUSHION

21063 60 × 40 cm
24" × 16"

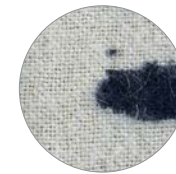


WHITE DOTS

29% polyacryl - 27% cotton -
22% mohair - 22% polyamide

CUSHION

21061 60 × 40 cm
24" × 16"

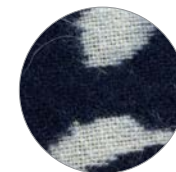


NAVY DOTS

29% polyacryl - 27% cotton -
22% mohair - 22% polyamide

CUSHION

21062 60 × 40 cm
24" × 16"





BROWN LINEAR SQUARE

29% polyacryl - 27% cotton -
22% mohair - 22% polyamide

CUSHION

21065 45 × 45 CM
18" × 18"



BROWN LINES

29% polyacryl - 27% cotton -
22% mohair - 22% polyamide

CUSHION

21066 45 × 45 CM
18" × 18"

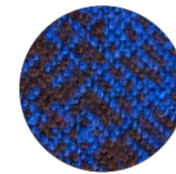


BROWN LINEAR DIAMONDS

29% polyacryl - 27% cotton -
22% mohair - 22% polyamide

CUSHION

21067 60 × 40 CM
24" × 16"



BROWN DOTS

29% polyacryl - 27% cotton -
22% mohair - 22% polyamide

CUSHION

21068 60 × 40 CM
24" × 16"



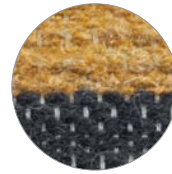


BRIGHT TULUM

63% linen - 17% wool - 16% polyacryl -
3% polyester - 1% cotton

CUSHION

21069 60 × 40 CM
24" × 16"



DARK TULUM

51% linen - 24% polyacryl - 15% wool -
9% polyester - 1% cotton

CUSHION

21070 60 × 40 CM
24" × 16"



TULUM

40% linen - 31% polyacryl - 11% wool -
9% polyester - 5% polyamide - 4% mohair

CUSHION

21071 45 × 45 CM
18" × 18"



“The intensity of the Yves Klein blue and the dark chocolate, two of our favorite color combinations plays off the classic painterly dashes and shapes. While paired with the woven stripes adds a classic balance to the collection.”

- Dawn Sweitzer, designer.



LAGO ALPONE
46% polyacryl - 20% wool -
18% cotton - 16% polyester

THROW
21072 140 × 200 CM
55" × 79"



NERO ALPONE
46% polyacryl - 20% wool -
18% cotton - 16% polyester

THROW
21074 140 × 200 CM
55" × 79"



OAT ALPONE
46% polyacryl - 20% wool -
18% cotton - 16% polyester

THROW
21073 140 × 200 CM
55" × 79"



CAMEL ALPONE
46% polyacryl - 20% wool -
18% cotton - 16% polyester

THROW
21075 140 × 200 CM
55" × 79"



HOW TO TAKE CARE OF OUR PRODUCTS

Timeless design

All our designs are intentionally timeless. They withstand trends and associate well with different styles, and they can be passed on from one home to the next, carrying over the stories of one lifetime into another. Our collections go back to the essence of what we believe is good design: pieces full of character, made from quality materials that age beautifully. We love that solid wood evolves with the years as it carries the marks of the life that happens to it.

We create collections for every room of the house: from the furniture that defines the purpose of a space to the objects that layer it with meaning. Nothing excites us more than seeing how people love and use our products in the stories of their life.

UNIQUENESS OF OUR PRODUCT
Our products are created using classic and traditional techniques, such as metal-leafing, hand-painting, silk screen-printing and aging. Due to the handcrafted nature of our products, each item will vary. We consider this a sign of uniqueness and quality.

CRAFTSMANSHIP
Outstanding craftsmanship is at the core of our brand, and behind the simplicity of our pieces lies a constant drive for innovation. Incorporating advanced techniques to our process of creation, each new design is revised and reworked to the last detail: every curve, texture and line reflects our design values.

General tips & tricks

- Products are intended for indoor use only.
- Always check the label attached to your product for specific care instructions
- Recommended humidity in the room: between 40% and 60%.
- Ideal room temperature: 21°C/ 70°F during the day, not below 14°C /57°F at night.
- To prevent color differences: do not place in direct sunlight.
- Avoid exposure to extreme conditions: do not place near heating sources or air-conditioners.
- To prevent staining, we recommend that any spills be removed immediately.
- Use placemats and/or coasters to prevent hot pots and pans, or cold glasses and bottles, from leaving marks.
- When cleaning the wooden surfaces, always work in the direction of the grain.
- Do not drag the furniture along the floor, always lift the furniture when moving.
- Always ensure water and solutions used to clean the floor do not come into contact with the furniture’s base, as it might leave permanent marks.

Due to the handcrafted nature of our products, each item will vary slightly. We consider this a sign of uniqueness and quality.

Trays & tray tables

All of our trays are intended for decorative and everyday use. They are not to be used in a setting such as, but not limited to, restaurants where they are exposed to constant washing, repetitive handling and service of heavy items.

WOOD
Our wooden trays are varnished with a water-based topcoat to repel common substances and fluids, such as coffee, tea and wine. However, the protective coat is no foolproof guarantee against stains. In case of a spill, remove it immediately. For regular dusting, use a dry cloth. For a more thorough cleaning, use furniture polish with a soft cloth. Keep coasters handy and use to prevent marking your wooden tray.

GLASS & MIRROR
Wipe the glass or mirror surface with a neutral glass cleaner and soft cloth.
Use coasters to prevent damaging tray surface.

- TRAY TABLE STRUCTURE**
- Dust regularly using a soft dry cloth.
 - For a more thorough cleaning, use mild soap and warm water. Rinse with clean water and wipe dry.
 - Do not use steel wool, sandpaper, mineral acid, bleach or chlorine cleaners on metal surfaces.
 - Do not drag along the floor, as it might damage the protective coating, cause rusting or leave permanent marks on the floor.
 - Always lift when moving them from place to place.

Home textiles

Always refer to the care label specific to your product as some items are not to be washed, and we recommend dry-cleaning only. Fluff up and air your cushions regularly, this will allow the down to breathe, ensuring the cushions stay light and feathery.

Our textiles are crafted from the best weaving yarns which are primarily produced in Belgium, France, Italy and Peru. By consciously choosing natural fibers – such as cotton, wool and Belgian linen – we stay true to our values: design pieces full of character, made from quality materials that age beautifully.

If any pilling should occur, don't be alarmed. It's a result of excess fiber coming off the fabric or from external sources. This is not a defect but a characteristic of many textiles.

- To keep your textiles in optimal condition we recommend the following:
- To remove any pilling, we recommend using an antipilling machine.
 - Avoid prolonged contact with direct sunlight.
 - Treat spills immediately. Blot up as much of the spill as possible with a clean, dry, white cloth. Do not rub.
 - In case of a stain, use a clean, slightly damp white cloth, blotting from the outer edge to the center of the stain.
 - Use a hair dryer on the lowest heat setting to evenly dry the fabric and prevent moisture rings.
 - Do not use any chemical products on your textiles.

CREDITS

LIFESTYLE PHOTOGRAPHY

Nicolas Schimp
Addison Jones

PRODUCT PHOTOGRAPHY

Thomas Ost

GRAPHICS & STYLING

Nancy Reijnders
Bas Pattyn

©2020 Ethnicraft

Ethnicraft

RETAIL

Ethnicraft Belgium

Headquarters
Scheldeweg 5
2850 Boom
T + 32 3 443 01 00
F + 32 3 443 01 01
E info@ethnicraft.com

Ethnicraft France

ZAC Euroflory
189, Rue Gabriel Lippmann CS90009
13131 Berre l'Etang CEDEX
T + 33 442 152 152
F + 33 442 152 153
E azur@ethnicraft.com

Ethnicraft Asia

T + 65 83 99 79 64
E info@ethnicraft-asia.com

Ethnicraft USA

High Point, North Carolina
T + 1 336 821 1385
E info@ethnicraft-usa.com

CONTRACT, HOSPITALITY & PROJECTS

Studio Ethnicraft

T + 32 3 443 01 72
E contract@ethnicraft.com

Studio Ethnicraft USA

High Point, North Carolina
T + 1 917 513 0069
E contract@ethnicraft-usa.com

ONLINE

ethnicraft.com

