



101

C O P E N H A G E N

Light  
Collection



101 Copenhagen 2018 - 2019 ©

**Location** The Lab  
**Photographer** Mariya Pepelanova  
**Stylist** Nicolaj Noddesbo  
**Graphic Design** Niels Kjeldsen Design  
**Print** Rosendahls

About 101	5 - 7	Fungi	44 - 47
Drop	10 - 15	Soketto	48 - 49
Dusk & Dawn	16 - 19	Clam	50 - 53
Bull	20 - 23	Modernist	54 - 55
Moonraker	24 - 27	Mushroom	56 - 57
Hoop	28 - 31	Arc	58 - 61
Punch Ball	32 - 35	Le Six	62 - 65
Brutalist	36 - 37	Overview	66 - 74
AD	38 - 39	Outro	76 - 82
The Moon	42 - 43		



## ABOUT 101 COPENHAGEN

101 Copenhagen is a Danish design brand founded in 2017 with a strong vision to create a world of beautiful lighting and accessories of exquisite craftsmanship, quality and timeless design for Scandinavian living. With a passion for materials and refined textures combined with our design aesthetic and an organic, calm color scheme, we are proud to present a collection filled with must-have novelties and timeless classics.

## Our creative drive

---

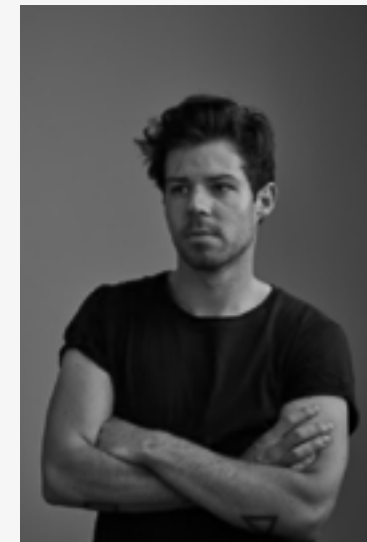
The IOI Copenhagen Design House carefully curates and design objects for Scandinavian living. The creative drive is centered in a fusion of the Scandinavian design tradition influenced by the timeless Japanese approach to material and techniques. The objects designed reflects the symbioses of design traditions whilst also featuring unique embedded stories, symbols and associations expressed in a minimalist idiom. The design approach is notably holistic, the work process is dynamic and characterized by freedom of expression, which creates unique and timeless pieces.



### Kristian Sofus Hansen

---

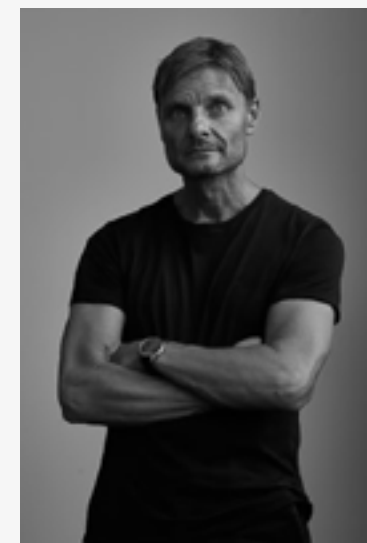
Kristian is a Danish designer graduated from the Royal Danish Academy of Fine Art whilst also spending time in Japan studying at the Kyoto Institute of Technology. Kristian started collaborating with Tommy Hyldahl in 2016 for NORR11 and has now ventured out in the world of lighting solutions and home accessories.



### Nicolaj Nøddesbo

---

Nicolaj is a Danish designer from the Aarhus School of Architecture. Nicolaj joined the design team in 2017 and has since developed truly iconic pieces including innovative light solutions and timeless novelties in the accessories department. Nicolaj strives to create functional design with personality and character, focusing on materiality and tactility creating minimalistic and sculptural designs.



### Tommy Hyldahl

---

Tommy is the founder and partner in NORR11 and IOI Copenhagen and has been involved in the creative direction of the companies since the start. Tommy launched IOI Copenhagen in 2017, a company that focuses on designing and curating home accessories and lighting solutions for Scandinavian living.







# Drop

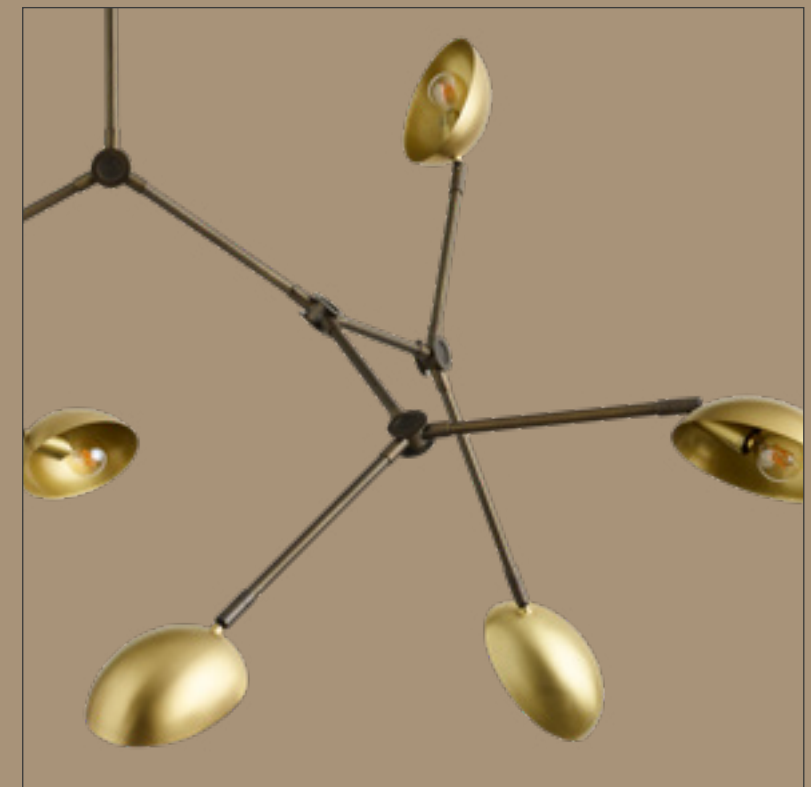
## Drop Chandelier

Designed by Kristian Sofus Hansen & Tommy Hyldahl

.....

The Drop Series is a family of drop shaped lampshades, with great flexibility through adjustable lampshades. The lamp is inspired by Danish Modernism and the 1950s iconic and experimental approach to lamp design. The drop shaped lampshade ensures and optimizes light diffusion, while the underside of brass gives the room a warm lighting.

The Drop Pendant Chandeliers detailed suspension is inspired by industrial and maritime references, and beautifully crafted in oxidized brass and subsequent hand brushed. The lamps many arms create countless variations, which can be customized to any room.





# Drop

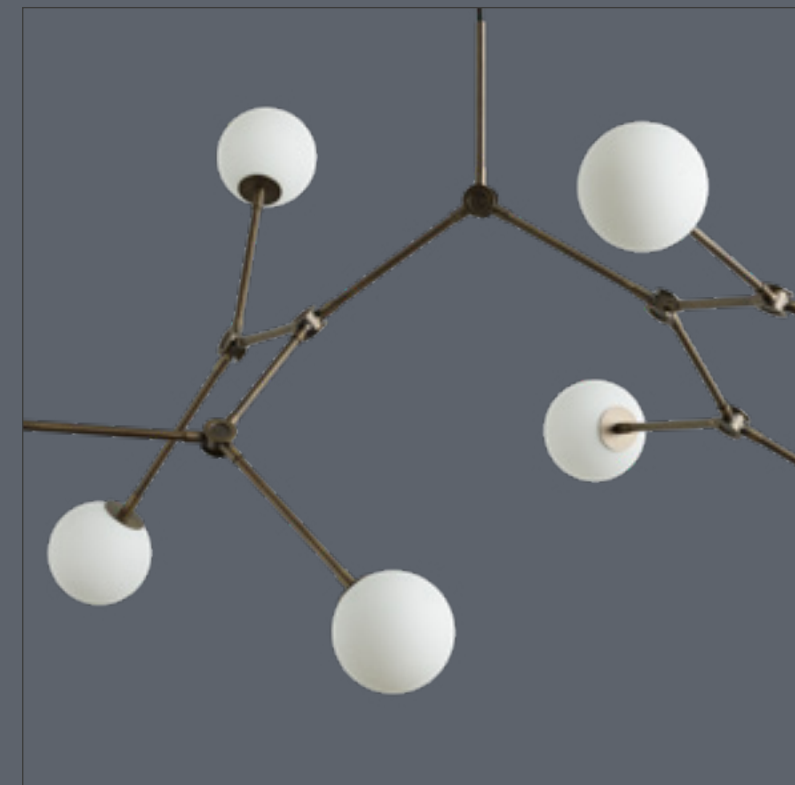
## Drop Chandelier Bulb

Designed by Kristian Sofus Hansen & Tommy Hyldahl

.....

The Drop Series is a family of drop shaped lampshades, with great flexibility through adjustable lampshades. The lamp is inspired by Danish Modernism and the 1950s iconic and experimental approach to lamp design. The drop shaped lampshade ensures and optimizes light diffusion, while the underside of brass gives the room a warm lighting.

The Drop Pendant Bulb takes the extravagance from the chandelier version and creates a warm light that we here in Denmark refer to as “hygge”. The drop shaped lampshade can be adjusted in multiple different angles, enabling the user to create a specific and unique atmosphere.







# Drop

## Drop Pendant Double

Designed by Kristian Sofus Hansen & Tommy Hyldahl

.....

The Drop Series is a family of drop shaped lampshades, with great flexibility through adjustable lampshades. The lamp is inspired by Danish Modernism and the 1950s iconic and experimental approach to lamp design. The drop shaped lampshade ensures and optimizes light diffusion, while the underside of brass gives the room a warm lighting.

The Drop Pendant Double is the cool littlebrother of the Drop Pendant Chandelier, channeling the industrial and maritime references, and beautifully crafted in brass and subsequent hand brushed. Perfect for casting warm hues over the dinner table, while its pivoting heads can be angled for more direct light.





# Dusk & Dawn

Dusk Table Lamp + Dawn Floor Lamp

Designed by Nicolaj Noddesbo & Tommy Hyldahl

With its layered shades the Dusk and Dawn lamp series playfully divides the light into a rhythm of exposure. The almost eclipse-like feeling contributes to an intimate and cozy atmosphere creating an art piece in itself.

By challenging the material and form of the base the Dusk and Dawn lamps has become a new way of presenting and integrate light design in interior schemes. The raw handmade oxidized aluminum base creates stability and continuity to the lamp while the two spun oxidized aluminum shades create a geometrical and clean look that gives depth to the smooth light.



Dusk / Table Lamp



# DAWN

Designed by Nicolaj Nøddesbo & Tommy Hyldahl





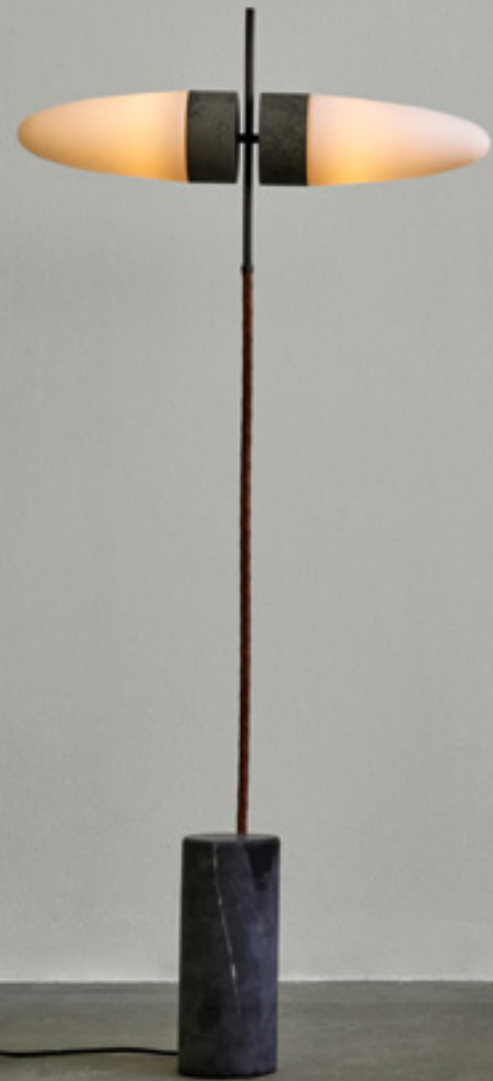
# Bull

## Bull Table Lamp + Bull Floor Lamp

Designed by Kristian Sofus Hansen & Tommy Hyldahl

.....

The Bull lamp is a sculptural lamp, inspired by the characteristic use of animal pictures in Danish Modernism from 1940s to 1960s. The lamp is named after its bull like lampshades of opal glass, which gives a smooth light scattering and a characteristic expression. Bull consists of an unpolished black marble base, complimented by a lamp arm in oxidized aluminum and covered by spun cognac leather. The upper parts of the lamp are also made from oxidized aluminum, creating a beautiful contrast between the textured metal surface and the smooth translucent opal glass. The interaction between the many exquisite materials creates a refined expression, which makes the Bull lamps more than just a light source.









”

“It was always the intention to explore the futuristic yet timeless design from the old cult movies, but we ended up creating a series that could actually have been part of the set, which was more than we could have asked for”

# Moonraker

Moonraker Table Lamp + Moonraker Floor Lamp

.....

The Moonraker lamp series is a bold yet minimalistic take on the international design lamps from the 1970's. Creating a sculpture that gives a truly unique outlook in any interior scheme the Moonraker series is truly a stand-out piece. The alienating legs giving stability and structure to the linear and cylindrical base carrying the hand-blown opal glass shade. The circular brass reflector covering the halfmoon gives the lamp its final touch and ensures the light distributes to perfection.

Designed by Nicolaj Nøddesbo & Tommy Hyldahl







# Moonraker





# HOOP

Hoop Floor Lamp + Hoop Table Lamp + Hoop Three Feet Table Lamp

Designed by Nicolaj Noddesbo & Tommy Hyldahl

.....

So simple, yet so sophisticated and uncompromised.

It is hard to believe that a simple shape can create a stunning and art like lamp, but the Hoop series gives you just this with an almost naive essence of geometry and form. The silhouette itself can light up even the darkest places and by offering the Hoop lamps in both brass and bronze it is possible to create two unique atmospheres with the same lamp.





Hoop / Table



Hoop / Feet



# Punch Ball

## Punch Ball Table Lamp

Whether it is in a fancy cocktail bar, at the library or in a home sitting in the corner on a desk, the Punch Ball table lamp will quickly become an integrated part of the interior adding its own exclusive touch. The simple and sleek design make the lamp versatile to any interior scheme, yet at the same time holds its own.

The opal Punch Ball shade almost floats in the air carried by a thin organic brass base, creating an airy and light feel.

The Punch Ball table lamp is inspired by the modernistic lamp designs from the mid 20th century, and have via a sleek and holistic design process been brushed up to present a cleaner and more modern look and feel.

Designed by Nicolaj Nøddesbo & Tommy Hyldahl

PNB





”

“We must advise not to punch the lamp though,  
it is looking so much better intact”





# BRUTALIST

## Brutalist Table Lamp

Designed by Kristian Sofus Hansen & Tommy Hyldahl

Brutalist is a sculptural table lamp made from cast lightweight concrete with a hidden light source. The lamp is named after the architectural style Brutalism, and is inspired by architectural masterpieces by Le Corbusier and Frank Lloyd Wright.

Brutalist consists of merged geometric shapes, where the composition of elements reflects the need to both hide and maximize the light source. The contrasting concrete material creates a nuanced surface, which beautifully reflects the adjustable light source.

# BRUTALIST



# AD

## Floor Lamp

Designed by Kristian Sofus Hansen & Tommy Hyldahl

AD Floor Lamp is inspired by the iconic Art Deco patterns, where trapezoidal shapes expand into symmetric patterns. AD consists of two conical lampshades made from spun aluminum. The lampshades are based on the same conical shape, which gently encloses the light source and gives a smooth light scattering. The sculptural construction is based on a plate geometry, which creates optical illusions between the light and massive.







# The Moon

## Floor Lamp

Designed by Kristian Sofus Hansen & Tommy Hyldahl

.....

The Moon is a minimalistic floor lamp inspired by minimal arts and industrial sculptures. The lamp is a carefully constructed geometry, where each component is perfectly weighed in relation to each other.

The lamp has two light sources placed as compositional fix points along an oxidized brass arm. A large circular lampshade is hanging from the lamp arm as a floating reflector in the space. The reflector lampshade of brushed brass is illuminated on both sides, and creates a warm and soft light setting. The lamp is mounted to cylindrical base of unpolished black marble in order to stabilize the structure.







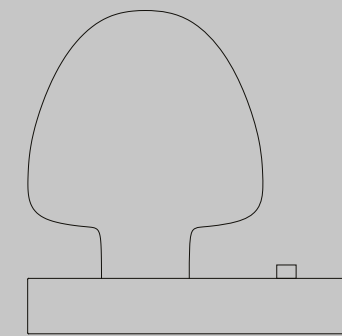
# FUNGI

## Fungi Floor Lamp + Fungi Table Lamp

.....

The Fungi lamp series is a prime example of a sculptural take on the classic glass shade lamp. Instead of becoming a corner piece in the windowsill it becomes a graphical statement that will light up any room.

The handmade raw oxidized base complements the dark smoked glass and becomes the ground from which the fungi emerges. The large glass shade constantly distributes a diffuse light throughout the surroundings and by raising the light bulb instead of hiding it the full potential of the shade is used.



Designed by Nicolaj Nøddesbo & Tommy Hyldahl







# Soksetto

Soksetto Pendant

Designed by Nicolaj Noddesbo & Tommy Hyldahl

.....

The Soksetto pendant lamp is more than just a standard socket. With its sleek and minimalistic design, it creates a soft, reserved ambience to any interior scheme. The Soksetto is designed with spun brass and a sublime finish and quality that shines through the unfussy look.

The Soksetto has 3 meters of black textile cord and has no ceiling cup, which enables easy mounting without any disturbing elements.



# Clam

Clam Pendant + Clam Table Lamp

.....

The Clam Series is a family of ceiling and table lamps, where the two lampshades surround the light, creating a fascinating graduation between direct and indirect lighting. The minimalistic lamp consists of a lamp base and two identical lampshades, with a wreath that fits the lamp base. The flexible lampshade can be positioned according to the user's needs, where it is possible to change direct and indirect lighting. The flexible lamp can be used both as a table- or floor lamp with the possibility of exciting lighting.

Designed by Kristian Sofus Hansen & Tommy Hyldahl







C





# Modernist

## Modernist Table Lamp

Designed by Kristian Sofus Hansen & Tommy Hyldahl

The Modernist Table Lamp is inspired by the experimental and yet simple forms of the 1950's table lamps. The simplistic design is contrasted by highly detailed parts, where every part is designed with ergonomics and light direction in mind.

The characteristic circle of the lampshade is able to move in both directions, and creates a beautiful silhouette in both day and evening lighting. The outer radius of the lampshade emphasizes the thinness of the shape and creates a soft edge for the hand to meet.

The light can be adjusted with the knurled on/off button of cast aluminum, which is beautifully positioned a little out from the center of the lamp base.

The Modernist Table Lamp truly combines the newest LED technology and industrial form in a warm and inviting light.



# Mushroom

Mushroom Table Lamp + Mushroom Floor Lamp

Designed by Kristian Sofus Hansen & Tommy Hyldahl

.....

The Mushroom Table Lamp is inspired by the archetypal fungus form, consisting of a lamp base in brushed brass and a lampshade in smoked glass. The lamp socket is stored in the lamp base, giving the lamp a simple and light expression. The lampshade of smoked glass is easily placed in a slid in the lamp base, and can easily be moved in case of replacing the bulb.







# ARC

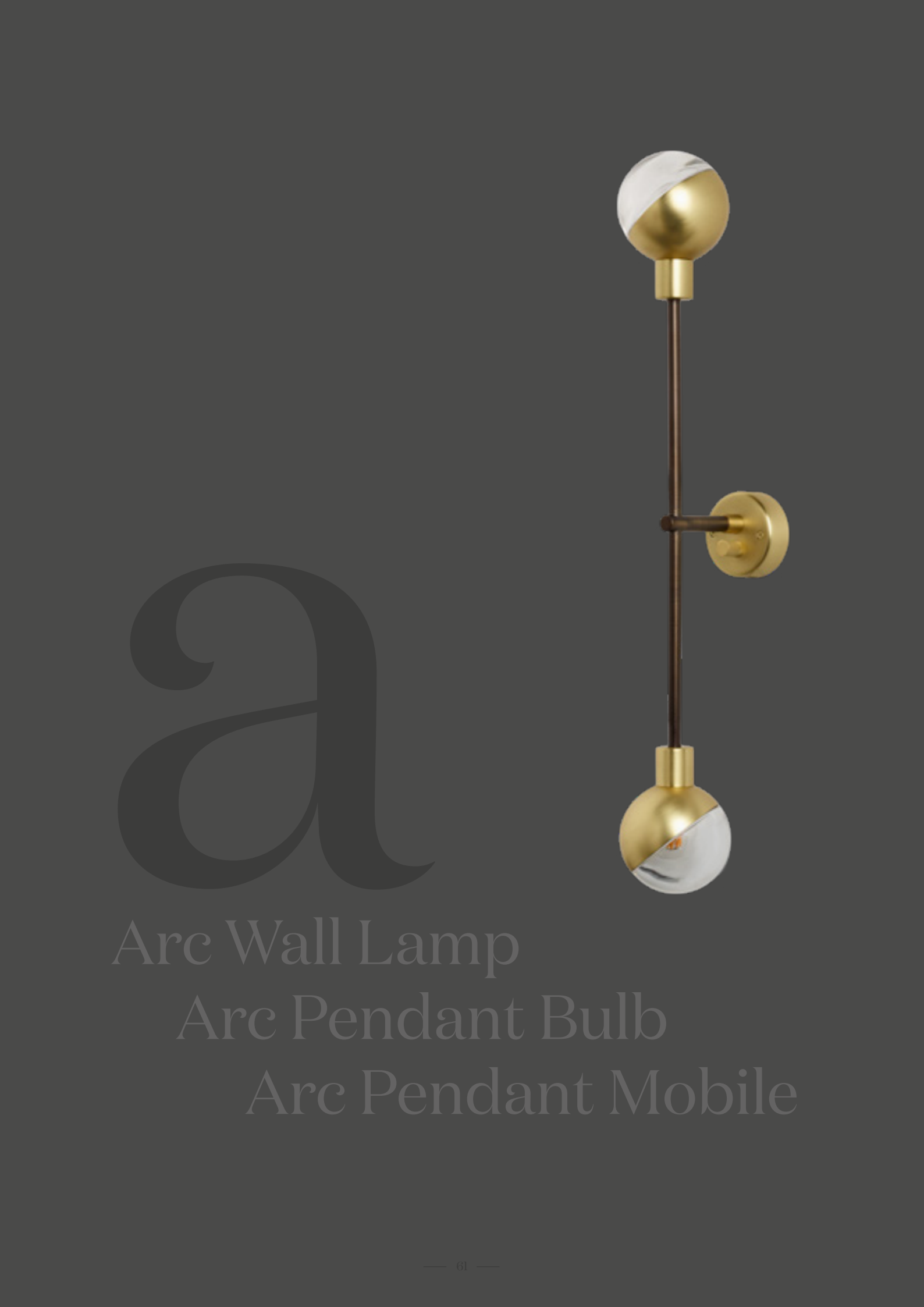
Arc Pendant Bulb + Arc Pendant Mobile + Arc Wall Lamp

Designed by Kristian Sofus Hansen & Tommy Hyldahl

.....

The Arc Series is a family of spherical lampshades cut in the middle at a 45-degree angle. The lampshade is based on the principle "form follows function", where the section of the lampshade creates both a distinctive design and a functional addition.

The Arc Lamps is inspired by the 1920s Bauhaus Lamps, based on the meeting between form and function.



a

Arc Wall Lamp

Arc Pendant Bulb

Arc Pendant Mobile



# Le Six

Wall Lamp + Wall Single Arm + Wall Double Arm + Pendant

Designed by Kristian Sofus Hansen & Tommy Hyldahl

Le Six is a modern lamp collection based on a minimalistic principle of one single lampshade adaptable for every lamp. The curved design of the lampshade is inspired by lamps from the 1920s and 1930s in a reinterpreted Scandinavian context. The characteristic trumpet shape is designed in order to create a lampshade with optimum light scattering, which is easily adjusted in any direction.

This makes Le Six a very diverse Lamp, which fits perfectly into every room of the house, offices, cantinas etc.





# Le Six



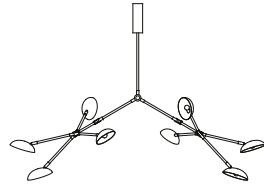




# Product overview

Lamps

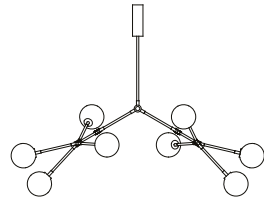
## DROP SERIES



### DROP CHANDELIER Chandelier

**Variations** **Brass** / NO. 010049  
 Lampshade: Iron  
 Pipes: Brushed Oxidized Brass  
 Ceiling Cup: Iron  
**Oxidized** / NO. 111098  
 Lampshade: Oxidized Aluminium  
 Pipes: Unbrushed Oxidized Brass  
 Ceiling Cup: Oxidized Aluminium

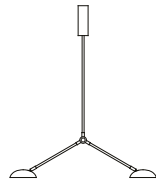
**Dimensions** W155 / H91 cm



### DROP CHANDELIER BULB Chandelier

**Variation** NO. 111093  
 Lampshade: Opal Glass  
 Pipes: Unbrushed Oxidized Brass  
 Ceiling Cup: Unbrushed Oxidized Brass

**Dimensions** W155 / H91 cm

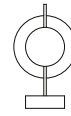


### DROP PENDANT DOUBLE Pendent lamp

**Variation** NO. 010048  
 Lampshade: Iron  
 Pipes: Brushed Oxidized Brass

**Dimensions** W90 / H103 cm

## DUSK & DAWN



### DUSK Table Lamp

**Variation** NO. 111089  
 Lampshade: Oxidized Aluminium  
 Pipe: Brushed Aluminium  
 Lampbase: Oxidized Aluminium

**Dimensions** W30 / H50 cm

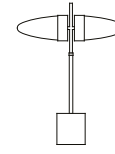


### DAWN Floor Lamp

**Variation** NO. 111088  
 Lampshade: Oxidized Aluminium  
 Pipe: Brushed Aluminium  
 Lampbase: Oxidized Aluminium

**Dimensions** W40 / H168 cm

## BULL



### BULL Table Lamp

**Variation** NO. 111095  
 Lampshade: Opal Glass  
 Lampshade Holder: Oxidized Aluminium  
 Lamp Arm: Oxidized Aluminium / Cognac Leather  
 Lampbase: Marble

**Dimensions** W38 / H50 cm



### BULL Floor Lamp

**Variation** NO. 111094  
 Lampshade: Opal Glass  
 Lampshade Holder: Oxidized Aluminium  
 Lamp Arm: Oxidized Aluminium / Cognac Leather  
 Lampbase: Marble

**Dimensions** W65 / H140 cm

## MOONRAKER



### MOONRAKER Table Lamp

**Variation** **Brass**  
 NO. 111097  
 Lampshade: Opal Glass  
 Lampbase: Aluminium

**Dimensions** W22 / H40 cm



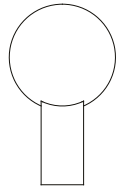
### MOONRAKER Floor Lamp

**Variation** **Brass**  
 NO. 111096  
 Lampshade: Opal Glass  
 Lampbase: Aluminium

**Dimensions** W36 / H100 cm



## HOOP



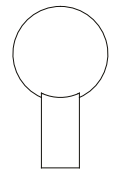
### HOOP Floor Lamp

**Variations**

**Brass** / NO. 111082  
Lampshade: Opal Glass  
Lampbase: Aluminium

**Bronze** / NO. 111083  
Lampshade: Opal Glass  
Lampbase: Aluminium

**Dimensions** W40 / H70 cm



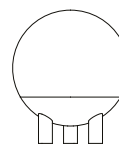
### HOOP Table Lamp

**Variations**

**Brass** / NO. 111084  
Lampshade: Opal Glass  
Lampbase: Aluminium

**Bronze** / NO. 111085  
Lampshade: Opal Glass  
Lampbase: Aluminium

**Dimensions** W20 / H34 cm



### HOOP Feet Table Lamp

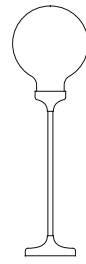
**Variations**

**Brass** / NO. 111086  
Lampshade: Opal Glass  
Lampshade: Aluminium

**Bronze** / NO. 111087  
Lampshade: Opal Glass  
Lampbase: Aluminium

**Dimensions** W18 / H23 cm

## PUNCH BALL

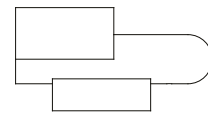


### PUNCH BALL Table Lamp

**Variation** Brass & Smoke / NO. 111092  
Lampshade: Opal Glass  
Lampbase: Aluminium

**Dimensions** W15 / H50 cm

## BRUTALIST

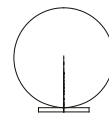


### BRUTALIST Table Lamp

**Variation** NO. 111150  
Lamp: Fiber Concrete

**Dimensions** W10 / L40 / H21 cm

## AD

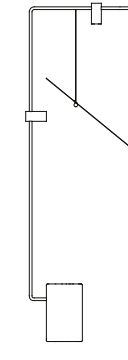


### AD Floor Lamp

**Variation** NO. 111107  
Lampshade: Iron  
Lampbase: Iron

**Dimensions** W60 / H62 cm

## THE MOON

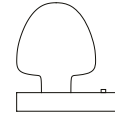


### THE MOON Floor Lamp

**Variation** NO. 111105  
Lampshade: Iron  
Lampbase: Marble  
Pipes: Brushed Brass

**Dimensions** W63 / D65 / 188 cm

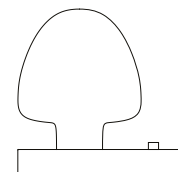
## FUNGI



### FUNGI Table Lamp

**Variation** Oxidized & Smoke  
NO. 111081  
Lampshade: Glass  
Lampbase: Oxidized Aluminium

**Dimensions** W35 / H35 cm

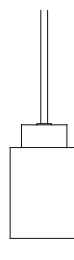


### FUNGI Floor Lamp

**Variations** Oxidized & Smoke  
NO. 111080  
Lampshade: Glass  
Lampbase: Oxidized Aluminium

**Dimensions** W50 / H50 cm

## SOKETTO

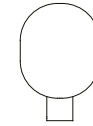


### SOKETTO Pendant Lamp

**Variation** **Brass**  
NO. 111004  
Lamp: Aluminium  
Light source not included

**Dimensions** Ø6 / H10 cm

## CLAM



### CLAM Table Lamp

**Variations** **Brass** / NO. 010046  
Lampshade: Iron  
Lampbase: Aluminium

**Oxidized** / NO. 010047  
Lampshade: Aluminium  
Lampbase: Aluminium

W30 / H43,5 cm



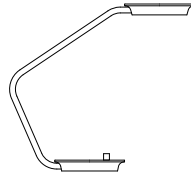
### CLAM Pendant Lamp

**Variations** **Brass** / NO. 010044  
Lampshade: Iron  
Pipes: Brushed Oxidized Brass

**Oxidized** / NO. 010045  
Lampshade: Aluminium  
Pipes: Brushed Oxidized Brass

**Dimensions** W30 / H103 cm

## MODERNIST

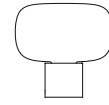


### MODERNIST Table Lamp

**Variation** Brass  
NO. 010036  
Lampshade: Aluminium  
Lampbase & Arm: Iron

**Dimensions** W48 / H43,5 cm

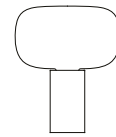
## MUSHROOM



### MUSHROOM Table Lamp

**Variation** Brass & Smoke  
NO. 010088  
Lampshade: Glass  
Lampbase: Brass

**Dimensions** Ø26 / H25 cm



### MUSHROOM Floor Lamp

**Variation** Brass & Smoke  
NO. 010089  
Lampshade: Glass  
Lampbase: Brass

**Dimensions** Ø30 / H35 cm

## ARC SERIES



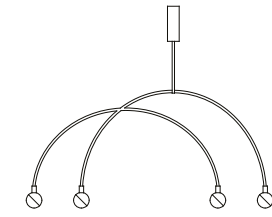
### ARC BULB Pendant Lamp

**Variations** **Brass**  
NO. 010039  
Lampshade: Iron

**Dimensions** Ø9 / H11 cm

**Black**  
NO. 010039  
Lampshade: Iron

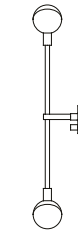
**Dimensions** Ø9 / H11 cm



### ARC MOBILE Pendant Lamp

**Variation** Brass  
NO. 010042  
Lampshade: Iron  
Pipes: Brushed Oxidized Brass

**Dimensions** W125 / H103 cm



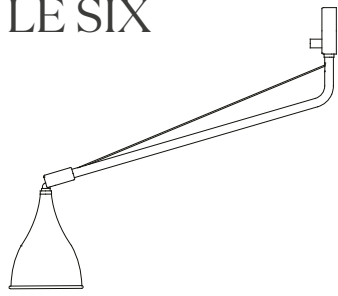
### ARC Wall Lamp

**Variation** Brass  
NO. 010043  
Lampshade: Iron  
Pipes: Brushed Oxidized Brass

**Dimensions** W9 / H65 cm



## LE SIX

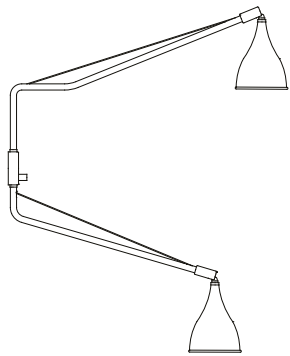


### LE SIX SINGLE Wall Lamp

**Variations** **Brass** / NO. 010081  
Lampshade: Iron  
Wallcup & Arm: Iron

**Black** / NO. 010082  
Lampshade: Iron  
Wallcup & Arm: Iron

**Dimensions** W60 / H48 cm

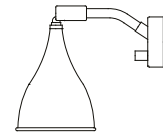


### LE SIX DOUBLE Wall Lamp

**Variations** **Brass** / NO. 010084  
Lampshade: Iron  
Wallcup & Arms: Iron

**Black** / NO. 010085  
Lampshade: Iron  
Wallcup & Arms: Iron

**Dimensions** W70 / H82 cm

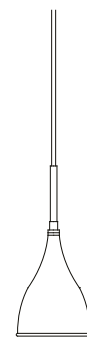


### LE SIX Wall Lamp

**Variations** **Brass** / NO. 010021  
Lampshade: Iron  
Wallcup & Arm: Iron

**Black** / NO. 010022  
Lampshade: Iron  
Wallcup & Arm: Iron

**Dimensions** W12 / H20 cm



### LE SIX Pendant Lamp

**Variations** **Brass** / NO. 010027  
Lampshade: Iron  
Wallcup: Iron

**Black** / NO. 010028  
Lampshade: Iron  
Wallcup: Iron

**Dimensions** W12 / H32 cm



Visit our Showroom  
in  
Østergade 17, 2.sal  
1100 Copenhagen K











**Page 6**

Madonna Sofa / Velvet / Rosewood

**Page 8**

Samurai Chair / Saddle Leather / Nature

**Page 10**

M's Furniture

Dining Table / Herringbone / Dark Stained Oak

**Page 12**

Shanghai Dining Chair / Paper Cord / Black

**Page 18**

Madonna Sofa / Velvet / Rosewood

**Page 23**

JFK Desk / Black

**Page 24**

Mammoth Chair / Smoked Oak / Vintage Leather / Anthracite

**Page 37**

Elephant Chair / Natural / Vintage Leather / Camel

**Page 45**

Goose Dining Chair / Velvet / Olive

**Page 47**

Elephant Chair / Natural / Sheepskin / Off White

**Page 48**

Goose Dining Chair / Velvet / Olive

**Page 49**

Shanghai Dining Chair / Paper Cord / Black

**Page 52-53**

JFK Desk / Black

**Page 64**

JFK Desk / Black

**Page 74**

Mammoth Chair / Smoked Oak / Vintage Leather / Anthracite



**Special Thanks**

Stalks & Roots  
M's Furniture

