



**THE HOTTEST BATHROOM DESIGN TRENDS**  
*for Summer 2018*

**MAISON VALENTINA®**  
LUXURY BATHROOMS



MAISON VALENTINA®  
LUXURY BATHROOMS







**Maison Valentina brings you  
The Hottest Bathroom Design Trends for summer 2018.**

We might still be in spring, but summer is just around the corner! With the change of season, most people will want to refresh their bathroom space and explore new trends and ideas. So this summer following this trends you will elevate your bathroom to the next level showing that the bathroom can be the trendiest and hottest space of the house.

MAISON VALENTINA®  
LUXURY BATHROOMS





## *Escaping To the Spa*

In an age when we are busier than ever, a spa-like bathroom is a necessity. In order to elevate your bathroom to a spa-like you will need muted lighting, deep soaking tubs, and lots of soft textures. After this transformation you will have a warm summer storm every time you step foot in the bathroom.



Diamond bathtub is designed in fiberglass with a luxurious black high-gloss finishing. The diamond shaped sculptural body is based on its name, making it a exquisite item in any modern bathroom. This bathtub also presents a golden rim, a small detail that stands out.



MAISON VALENTINA  
LUXURY BATHROOMS



MAISON VALENTINA | LUXURY BATHROOMS  
[WWW.MAISONVALENTINA.NET](http://WWW.MAISONVALENTINA.NET) | [PRESS@MAISONVALENTINA.NET](mailto:PRESS@MAISONVALENTINA.NET)



## *Japanese Calm*

The new serenity trend is inspired by the Japanese notion of Zen. Traditional Japanese bathrooms are nothing short of a serene scenic journey into a misty rainforest. With attention to color, design, placement and utility, the Japanese really focus on creating a peaceful space that is useful yet pleasing. Soft brown, gold, white and smooth granite surfaces are all trends in modern Japanese bathroom design.



The Koi bathtub features an aged brushed brass base resembling the scales pattern of the Japanese Koi carp. The contrived patina iron tub has an oval shape and a curved lip, making it the perfect resting spot for your head. The name of this contemporary bathtub and the Japanese word for love are homophones making the carp a symbol of love and affection.



MAISON VALENTINA  
LUXURY BATHROOMS



MAISON VALENTINA | LUXURY BATHROOMS

[WWW.MAISONVALENTINA.NET](http://WWW.MAISONVALENTINA.NET) | [PRESS@MAISONVALENTINA.NET](mailto:PRESS@MAISONVALENTINA.NET)



## *Metallic Glamour*

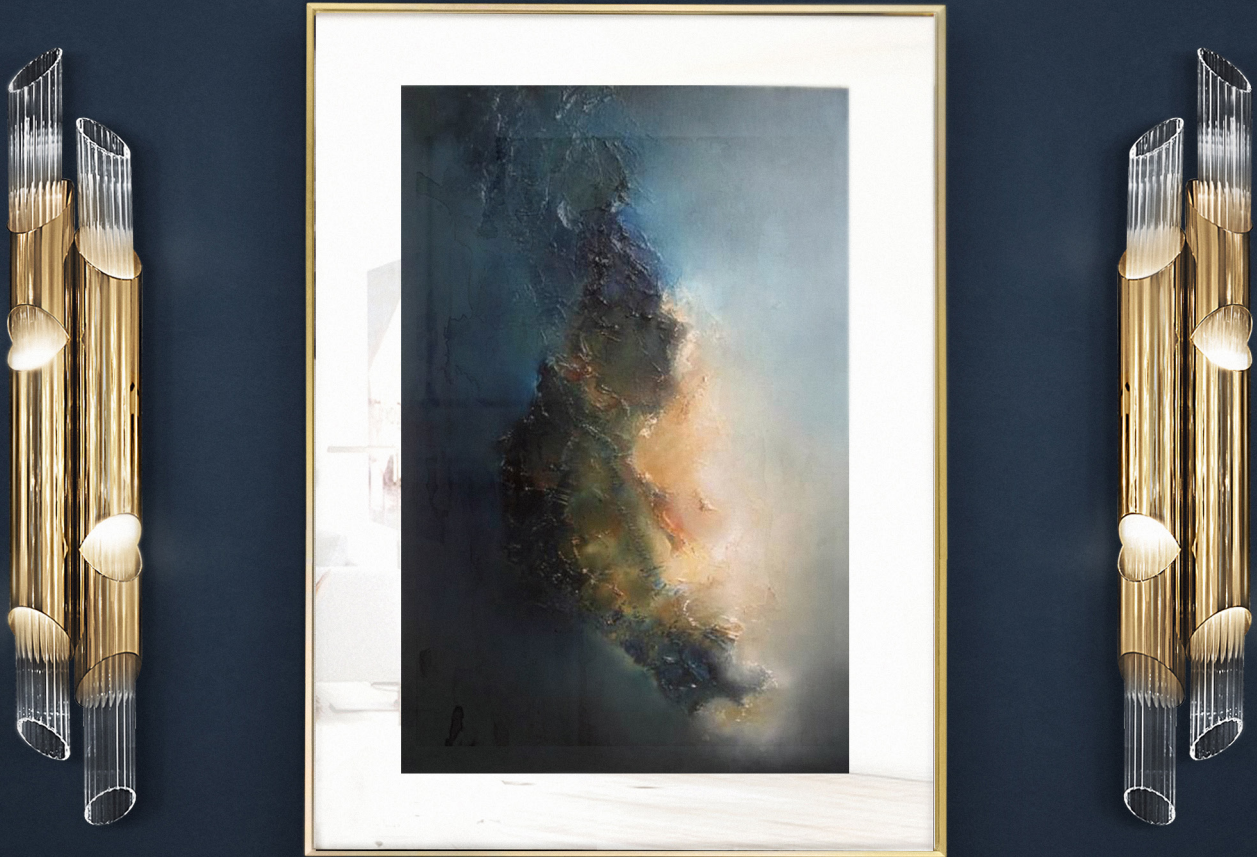
There is definitely a trend emerging for modern metallic finished, and it's worth tapping into for your new bathroom design. Gold is definitely experiencing a renaissance now, but it's important to set the right tone, so add a gold tap, for example, and this will give the feeling of glamour without veering into tackiness.



The Koi bathtub features an aged brushed brass base resembling the scales pattern of the Japanese Koi carp. The contrived patina iron tub has an oval shape and a curved lip, making it the perfect resting spot for your head. The name of this contemporary bathtub and the Japanese word for love are homophones making the carp a symbol of love and affection.



MAISON VALENTINA<sup>®</sup>  
LUXURY BATHROOMS



MAISON VALENTINA | LUXURY BATHROOMS

[WWW.MAISONVALENTINA.NET](http://WWW.MAISONVALENTINA.NET) | [PRESS@MAISONVALENTINA.NET](mailto:PRESS@MAISONVALENTINA.NET)



## *The Return of Color*

Whites and neutrals will probably never go out of style in the bathroom, but try to introduce color and have some fun in the process. Blue color palettes are also on-trend this year. You will see since blackened to denim blues mixed with metallic hues.



Newton is an outstanding moment of design inspiration. This bathtub features a single-slipper style shape, a timeless detail that conveys comfort. It has a distinctive curved lip, made out of gold plated casted iron, revealing a golden interior. The high-gloss black and gold lacquered spheres make the perfect combination to make this a sculptural and artistic piece.



MAISON VALENTINA<sup>®</sup>  
LUXURY BATHROOMS



MAISON VALENTINA | LUXURY BATHROOMS  
WWW.MAISONVALENTINA.COM | INFO@MAISONVALENTINA.NET



## *Darker Tones are Hot*

In a space known so long for its neutral whites and light wood stain colors, the dark shades are starting to conquer this space. This includes dark tile flooring, grey painted elegant cabinets, matte black plumbing fixtures and cabinet hardware and even dark painted accent walls. Though the trend is slow, darker tones are definitely here to stay.



Newton is an organic shaped washbasin made out of casted aluminum spheres that merge to create a tabletop, providing a unique design approach to this bathroom decor piece. The spheres are finished with a high gloss black lacquer, contrasting with the cutted ones on the counter, finished in casted brass. It features an integrated round sink in polished brass for some golden accent. It is a true piece of art!



## ABOUT US

**Maison Valentina** is a luxury bathroom brand that provides a collection capable of making your projects come true, with high-end solutions as bathtubs, washbasins freestanding washbasins and vessel sinks, mirrors, lighting, case goods and bath accessories made with the finest selection of materials as brass, marble, wood or glass, combined with rare handwork techniques and contemporary design. Our main goal is to offer the same comfort and luxury that you are able to feel in any other division of the house, keeping at the same time the best exclusive design and bold pieces. Maison Valentina is also perfect for your contract project with an immense variety of solutions through its **ATO Collection!**

Get inspired with our luxury bathroom ideas for the modern home!

*For further information, please contact:*

**SORAIA COSTA** | PRESS RELATIONS

press@maisonvalentina.net